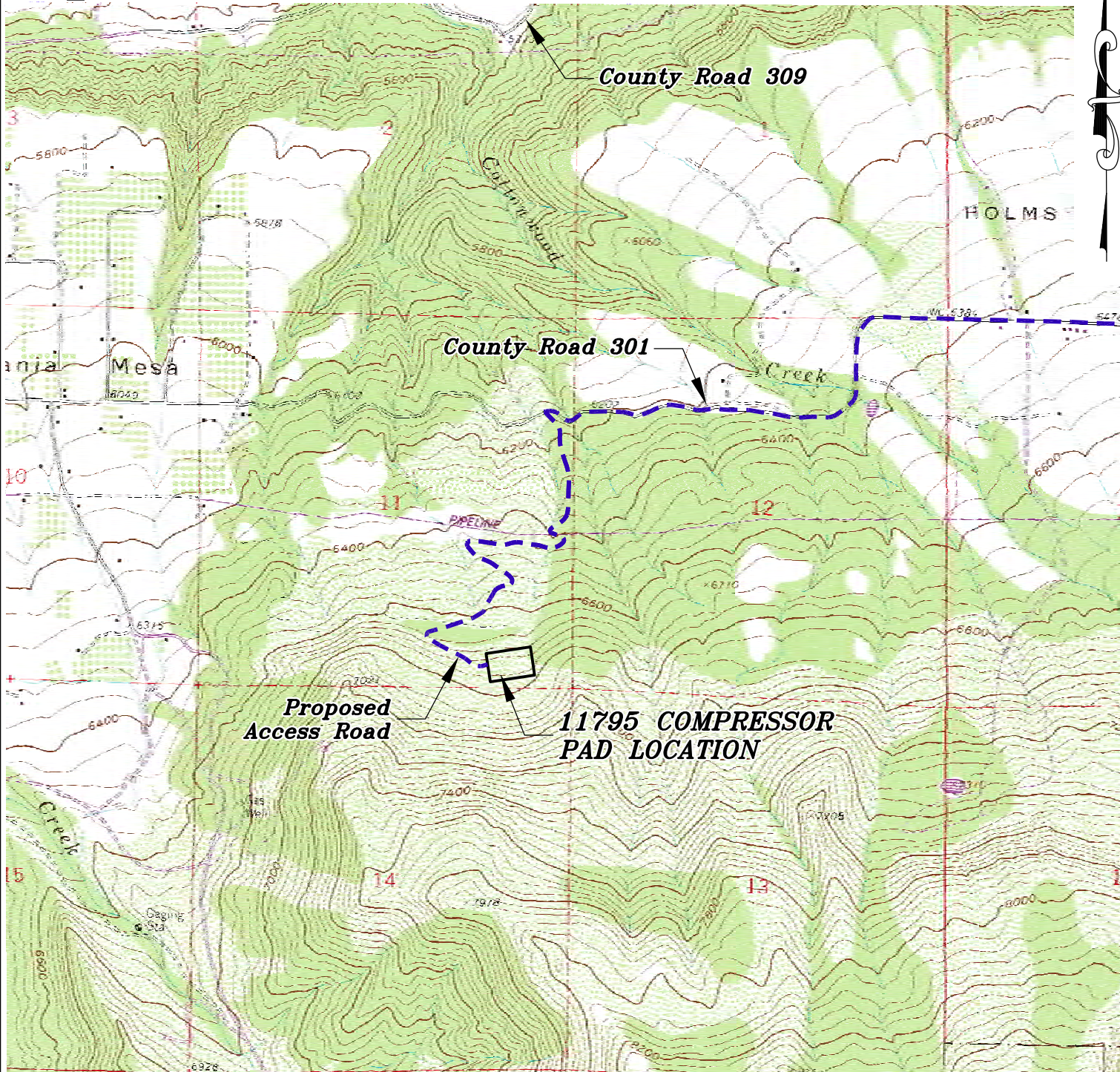


Section 11  
T. 7 S., R. 95 W.  
of the 6th P.M.



**ACCESS DESCRIPTION:**

FROM THE INTERSECTION OF STATE HIGHWAY 6 AND COUNTY ROAD 323 (RULISON ROAD) NORTH OF RULISON, PROCEED SOUTHERLY ALONG COUNTY ROAD 323 (RULISON ROAD)  $\pm 1.1$  MILES TO THE INTERSECTION WITH COUNTY ROAD 309 (RULISON PARACHUTE ROAD), PROCEED LEFT IN AN EASTERLY DIRECTION  $\pm 2.3$  MILES TO THE INTERSECTION WITH COUNTY ROAD 301, PROCEED RIGHT IN A SOUTHERLY TO WESTERLY DIRECTION  $\pm 4.4$  MILES TO THE INTERSECTION WITH A DIRT/GRAVEL ROAD, PROCEED LEFT IN A SOUTHERLY TO DIRECTION  $\pm 1.3$  MILES TO THE 11795 COMPRESSOR PAD LOCATION, AS SHOWN HEREON.

136 East Third Street  
Rifle, Colorado 81650  
Ph. (970) 625-2720  
Fax (970) 625-2773



**BOOKCLIFF**  
Survey Services, Inc.

SCALE: 1" = 2000'  
DATE: 10/5/11  
SHEET: 3 of 5  
PROJECT: Noble Energy  
DFT: CWS

Construction Plan Prepared for:



Battlement Mesa Compressor Pad -Sheet 3  
Access