

# **US ROCKIES REGION PLANNING**

**COLORADO NORTHERN ZONE - 83**

**WELD\_CAMP 5 PAD**

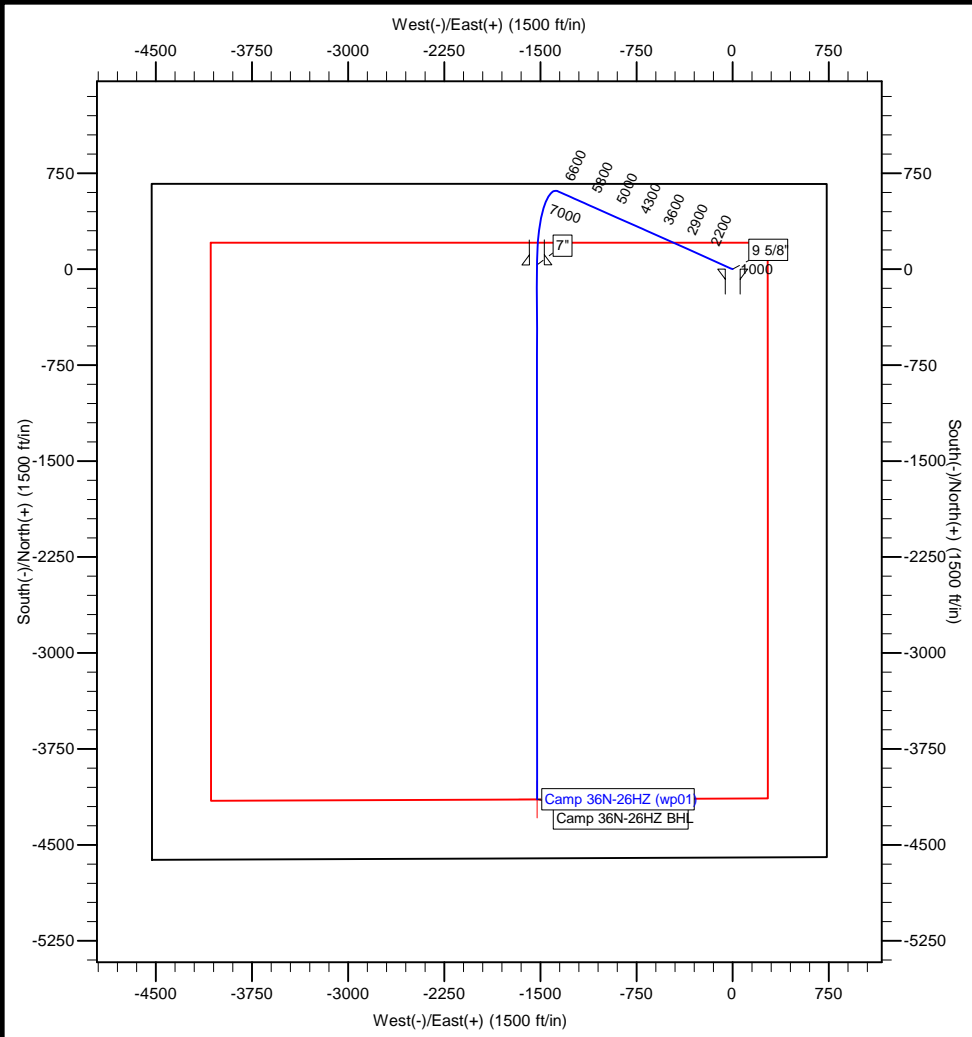
**Camp 36N-26HZ**

**Camp 36N-26HZ**

**Plan: Camp 36N-26HZ (wp01)**

## **Standard Planning Report**

**06 December, 2011**



Azimuths to True North  
 Magnetic North: 8.77°  
 Magnetic Field  
 Strength: 52978.3snT  
 Dip Angle: 66.88°  
 Date: 12/6/2011  
 Model: IGRF2010



**Project: COLORADO NORTHERN ZONE - 83**  
**Site: WELD\_CAMP 5 PAD**  
**Well: Camp 36N-26HZ**  
**Wellbore: Camp 36N-26HZ**  
**Section:**  
**SHL:**  
**Design: Camp 36N-26HZ (wp01)**  
**Latitude: 40.201631**  
**Longitude: -104.737556**  
**GL: 5013.00**  
**KB: rkb + gl @ 5030.00ft**

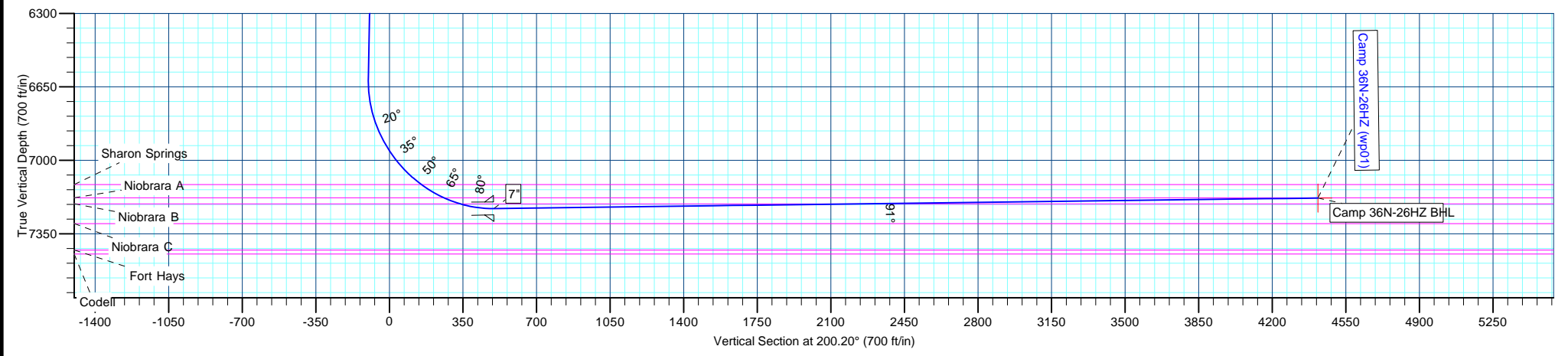
WELL DETAILS: Camp 36N-26HZ						
+N/-S	+E/-W	Northing	Ground Level: Easting	5013.00 Latitude	Longitude	Slot
0.00	0.00	1317212.17	3212967.26	40.201631	-104.737556	

SECTION DETAILS								
MD	Inc	Azi	TVD	+N/-S	+E/-W	Dleg	TFace	VSect
0.00	0.00	0.00	0.00	0.00	0.00	0.00	0.00	0.00
1000.00	0.00	0.00	1000.00	0.00	0.00	0.00	0.00	0.00
1799.80	16.00	294.06	1789.45	45.23	-101.28	2.00	294.06	-7.47
6818.54	16.00	294.06	6613.87	609.12	-1364.12	0.00	0.00	-100.63
7789.84	90.69	179.96	7230.00	33.00	-1527.00	10.00	-113.09	496.30
7791.33	90.69	179.97	7229.98	31.51	-1527.00	1.00	111.47	497.69
11968.26	90.69	179.97	7180.00	-4145.12	-1525.09	0.00	0.00	4416.78

WELLBORE TARGET DETAILS (MAP CO-ORDINATES AND LAT/LONG)						
Name	TVD	+N/-S	+E/-W	Latitude	Longitude	Shape
Camp 36N-26HZ BHL	7180.00	-4145.12	-1525.09	40.190252	-104.743015	Point

FORMATION TOP DETAILS		
TVDPath	MDPath	Formation
4068.00	4170.13	Parkman
4576.00	4698.59	Sussex
7116.00	7408.53	Sharon Springs
7179.00	7534.87	Niobrara A
7208.00	7620.56	Niobrara B

CASING DETAILS			
TVD	MD	Name	Size
900.00	900.00	9 5/8"	9-5/8
7230.00	7789.84	7"	7



# Anadarko Petroleum Corp

## Planning Report

<b>Database:</b>	edmp	<b>Local Co-ordinate Reference:</b>	Well Camp 36N-26HZ
<b>Company:</b>	US ROCKIES REGION PLANNING	<b>TVD Reference:</b>	rkb + gl @ 5030.00ft
<b>Project:</b>	COLORADO NORTHERN ZONE - 83	<b>MD Reference:</b>	rkb + gl @ 5030.00ft
<b>Site:</b>	WELD_CAMP 5 PAD	<b>North Reference:</b>	True
<b>Well:</b>	Camp 36N-26HZ	<b>Survey Calculation Method:</b>	Minimum Curvature
<b>Wellbore:</b>	Camp 36N-26HZ		
<b>Design:</b>	Camp 36N-26HZ (wp01)		

<b>Project</b> COLORADO NORTHERN ZONE - 83			
<b>Map System:</b>	US State Plane 1983	<b>System Datum:</b>	Mean Sea Level
<b>Geo Datum:</b>	North American Datum 1983		
<b>Map Zone:</b>	Colorado Northern Zone		

<b>Site</b> WELD_CAMP 5 PAD					
<b>Site Position:</b>		<b>Northing:</b>	1,317,276.21 usft	<b>Latitude:</b>	40.201805
<b>From:</b>	Lat/Long	<b>Easting:</b>	3,213,042.14 usft	<b>Longitude:</b>	-104.737286
<b>Position Uncertainty:</b>	0.00 ft	<b>Slot Radius:</b>	13-3/16 "	<b>Grid Convergence:</b>	0.49 °

<b>Well</b> Camp 36N-26HZ						
<b>Well Position</b>	<b>+N/-S</b>	-63.40 ft	<b>Northing:</b>	1,317,212.17 usft	<b>Latitude:</b>	40.201631
	<b>+E/-W</b>	-75.42 ft	<b>Easting:</b>	3,212,967.27 usft	<b>Longitude:</b>	-104.737556
<b>Position Uncertainty</b>		0.00 ft	<b>Wellhead Elevation:</b>		<b>Ground Level:</b>	5,013.00 ft

<b>Wellbore</b> Camp 36N-26HZ					
<b>Magnetics</b>	<b>Model Name</b>	<b>Sample Date</b>	<b>Declination</b>	<b>Dip Angle</b>	<b>Field Strength</b>
	IGRF2010	12/6/2011	(°)	(°)	(nT)
			8.77	66.88	52,978

<b>Design</b> Camp 36N-26HZ (wp01)				
<b>Audit Notes:</b>				
<b>Version:</b>	<b>Phase:</b>	PLAN	<b>Tie On Depth:</b>	0.00
<b>Vertical Section:</b>	<b>Depth From (TVD)</b>	<b>+N/-S</b>	<b>+E/-W</b>	<b>Direction</b>
	(ft)	(ft)	(ft)	(°)
	0.00	0.00	0.00	200.20

<b>Plan Sections</b>										
Measured Depth (ft)	Inclination (°)	Azimuth (°)	Vertical Depth (ft)	+N/-S (ft)	+E/-W (ft)	Dogleg Rate (°/100usft)	Build Rate (°/100usft)	Turn Rate (°/100usft)	TFO (°)	Target
0.00	0.00	0.00	0.00	0.00	0.00	0.00	0.00	0.00	0.00	
1,000.00	0.00	0.00	1,000.00	0.00	0.00	0.00	0.00	0.00	0.00	
1,799.80	16.00	294.06	1,789.45	45.23	-101.28	2.00	2.00	0.00	294.06	
6,818.54	16.00	294.06	6,613.87	609.12	-1,364.12	0.00	0.00	0.00	0.00	
7,789.84	90.69	179.96	7,230.00	33.00	-1,527.00	10.00	7.69	-11.75	-113.09	
7,791.33	90.69	179.97	7,229.98	31.51	-1,527.00	1.00	-0.37	0.93	111.47	
11,968.26	90.69	179.97	7,180.00	-4,145.12	-1,525.10	0.00	0.00	0.00	0.00	Camp 36N-26HZ BHL

# Anadarko Petroleum Corp

## Planning Report

<b>Database:</b>	edmp	<b>Local Co-ordinate Reference:</b>	Well Camp 36N-26HZ
<b>Company:</b>	US ROCKIES REGION PLANNING	<b>TVD Reference:</b>	rkb + gl @ 5030.00ft
<b>Project:</b>	COLORADO NORTHERN ZONE - 83	<b>MD Reference:</b>	rkb + gl @ 5030.00ft
<b>Site:</b>	WELD_CAMP 5 PAD	<b>North Reference:</b>	True
<b>Well:</b>	Camp 36N-26HZ	<b>Survey Calculation Method:</b>	Minimum Curvature
<b>Wellbore:</b>	Camp 36N-26HZ		
<b>Design:</b>	Camp 36N-26HZ (wp01)		

Planned Survey										
Measured Depth (ft)	Inclination (°)	Azimuth (°)	Vertical Depth (ft)	+N/-S (ft)	+E/-W (ft)	Vertical Section (ft)	Dogleg Rate (°/100usft)	Build Rate (°/100usft)	Turn Rate (°/100usft)	
0.00	0.00	0.00	0.00	0.00	0.00	0.00	0.00	0.00	0.00	0.00
100.00	0.00	0.00	100.00	0.00	0.00	0.00	0.00	0.00	0.00	0.00
200.00	0.00	0.00	200.00	0.00	0.00	0.00	0.00	0.00	0.00	0.00
300.00	0.00	0.00	300.00	0.00	0.00	0.00	0.00	0.00	0.00	0.00
400.00	0.00	0.00	400.00	0.00	0.00	0.00	0.00	0.00	0.00	0.00
500.00	0.00	0.00	500.00	0.00	0.00	0.00	0.00	0.00	0.00	0.00
600.00	0.00	0.00	600.00	0.00	0.00	0.00	0.00	0.00	0.00	0.00
700.00	0.00	0.00	700.00	0.00	0.00	0.00	0.00	0.00	0.00	0.00
800.00	0.00	0.00	800.00	0.00	0.00	0.00	0.00	0.00	0.00	0.00
900.00	0.00	0.00	900.00	0.00	0.00	0.00	0.00	0.00	0.00	0.00
<b>9 5/8"</b>										
1,000.00	0.00	0.00	1,000.00	0.00	0.00	0.00	0.00	0.00	0.00	0.00
1,100.00	2.00	294.06	1,099.98	0.71	-1.59	-0.12	2.00	2.00	2.00	0.00
1,200.00	4.00	294.06	1,199.84	2.85	-6.37	-0.47	2.00	2.00	2.00	0.00
1,300.00	6.00	294.06	1,299.45	6.40	-14.33	-1.06	2.00	2.00	2.00	0.00
1,400.00	8.00	294.06	1,398.70	11.37	-25.46	-1.88	2.00	2.00	2.00	0.00
1,500.00	10.00	294.06	1,497.47	17.75	-39.74	-2.93	2.00	2.00	2.00	0.00
1,600.00	12.00	294.06	1,595.63	25.52	-57.16	-4.22	2.00	2.00	2.00	0.00
1,700.00	14.00	294.06	1,693.06	34.70	-77.70	-5.73	2.00	2.00	2.00	0.00
1,799.80	16.00	294.06	1,789.45	45.23	-101.28	-7.47	2.00	2.00	2.00	0.00
1,800.00	16.00	294.06	1,789.65	45.25	-101.33	-7.47	0.00	0.00	0.00	0.00
1,900.00	16.00	294.06	1,885.77	56.48	-126.50	-9.33	0.00	0.00	0.00	0.00
2,000.00	16.00	294.06	1,981.90	67.72	-151.66	-11.19	0.00	0.00	0.00	0.00
2,100.00	16.00	294.06	2,078.03	78.96	-176.82	-13.04	0.00	0.00	0.00	0.00
2,200.00	16.00	294.06	2,174.16	90.19	-201.98	-14.90	0.00	0.00	0.00	0.00
2,300.00	16.00	294.06	2,270.29	101.43	-227.15	-16.76	0.00	0.00	0.00	0.00
2,400.00	16.00	294.06	2,366.42	112.66	-252.31	-18.61	0.00	0.00	0.00	0.00
2,500.01	16.00	294.06	2,462.54	123.90	-277.47	-20.47	0.00	0.00	0.00	0.00
2,600.01	16.00	294.06	2,558.67	135.13	-302.64	-22.32	0.00	0.00	0.00	0.00
2,700.01	16.00	294.06	2,654.80	146.37	-327.80	-24.18	0.00	0.00	0.00	0.00
2,800.01	16.00	294.06	2,750.93	157.61	-352.96	-26.04	0.00	0.00	0.00	0.00
2,900.01	16.00	294.06	2,847.06	168.84	-378.12	-27.89	0.00	0.00	0.00	0.00
3,000.01	16.00	294.06	2,943.19	180.08	-403.29	-29.75	0.00	0.00	0.00	0.00
3,100.01	16.00	294.06	3,039.31	191.31	-428.45	-31.60	0.00	0.00	0.00	0.00
3,200.01	16.00	294.06	3,135.44	202.55	-453.61	-33.46	0.00	0.00	0.00	0.00
3,300.01	16.00	294.06	3,231.57	213.78	-478.77	-35.32	0.00	0.00	0.00	0.00
3,400.01	16.00	294.06	3,327.70	225.02	-503.94	-37.17	0.00	0.00	0.00	0.00
3,500.01	16.00	294.06	3,423.83	236.26	-529.10	-39.03	0.00	0.00	0.00	0.00
3,600.01	16.00	294.06	3,519.96	247.49	-554.26	-40.89	0.00	0.00	0.00	0.00
3,700.01	16.00	294.06	3,616.08	258.73	-579.42	-42.74	0.00	0.00	0.00	0.00
3,800.01	16.00	294.06	3,712.21	269.96	-604.59	-44.60	0.00	0.00	0.00	0.00
3,900.01	16.00	294.06	3,808.34	281.20	-629.75	-46.45	0.00	0.00	0.00	0.00
4,000.01	16.00	294.06	3,904.47	292.43	-654.91	-48.31	0.00	0.00	0.00	0.00
4,100.01	16.00	294.06	4,000.60	303.67	-680.07	-50.17	0.00	0.00	0.00	0.00
4,170.13	16.00	294.06	4,068.00	311.55	-697.72	-51.47	0.00	0.00	0.00	0.00
<b>Parkman</b>										
4,200.01	16.00	294.06	4,096.72	314.91	-705.24	-52.02	0.00	0.00	0.00	0.00
4,300.01	16.00	294.06	4,192.85	326.14	-730.40	-53.88	0.00	0.00	0.00	0.00
4,400.01	16.00	294.06	4,288.98	337.38	-755.56	-55.73	0.00	0.00	0.00	0.00
4,500.01	16.00	294.06	4,385.11	348.61	-780.72	-57.59	0.00	0.00	0.00	0.00
4,600.01	16.00	294.06	4,481.24	359.85	-805.89	-59.45	0.00	0.00	0.00	0.00
4,698.59	16.00	294.06	4,576.00	370.92	-830.69	-61.28	0.00	0.00	0.00	0.00
<b>Sussex</b>										

# Anadarko Petroleum Corp

## Planning Report

<b>Database:</b>	edmp	<b>Local Co-ordinate Reference:</b>	Well Camp 36N-26HZ
<b>Company:</b>	US ROCKIES REGION PLANNING	<b>TVD Reference:</b>	rkb + gl @ 5030.00ft
<b>Project:</b>	COLORADO NORTHERN ZONE - 83	<b>MD Reference:</b>	rkb + gl @ 5030.00ft
<b>Site:</b>	WELD_CAMP 5 PAD	<b>North Reference:</b>	True
<b>Well:</b>	Camp 36N-26HZ	<b>Survey Calculation Method:</b>	Minimum Curvature
<b>Wellbore:</b>	Camp 36N-26HZ		
<b>Design:</b>	Camp 36N-26HZ (wp01)		

Planned Survey									
Measured Depth (ft)	Inclination (°)	Azimuth (°)	Vertical Depth (ft)	+N/-S (ft)	+E/-W (ft)	Vertical Section (ft)	Dogleg Rate (°/100usft)	Build Rate (°/100usft)	Turn Rate (°/100usft)
4,700.01	16.00	294.06	4,577.37	371.08	-831.05	-61.30	0.00	0.00	0.00
4,800.01	16.00	294.06	4,673.49	382.32	-856.21	-63.16	0.00	0.00	0.00
4,900.01	16.00	294.06	4,769.62	393.56	-881.37	-65.01	0.00	0.00	0.00
5,000.01	16.00	294.06	4,865.75	404.79	-906.54	-66.87	0.00	0.00	0.00
5,100.01	16.00	294.06	4,961.88	416.03	-931.70	-68.73	0.00	0.00	0.00
5,200.01	16.00	294.06	5,058.01	427.26	-956.86	-70.58	0.00	0.00	0.00
5,300.01	16.00	294.06	5,154.14	438.50	-982.02	-72.44	0.00	0.00	0.00
5,400.01	16.00	294.06	5,250.26	449.73	-1,007.19	-74.30	0.00	0.00	0.00
5,500.01	16.00	294.06	5,346.39	460.97	-1,032.35	-76.15	0.00	0.00	0.00
5,600.01	16.00	294.06	5,442.52	472.21	-1,057.51	-78.01	0.00	0.00	0.00
5,700.01	16.00	294.06	5,538.65	483.44	-1,082.67	-79.86	0.00	0.00	0.00
5,800.01	16.00	294.06	5,634.78	494.68	-1,107.84	-81.72	0.00	0.00	0.00
5,900.01	16.00	294.06	5,730.91	505.91	-1,133.00	-83.58	0.00	0.00	0.00
6,000.01	16.00	294.06	5,827.03	517.15	-1,158.16	-85.43	0.00	0.00	0.00
6,100.01	16.00	294.06	5,923.16	528.38	-1,183.33	-87.29	0.00	0.00	0.00
6,200.01	16.00	294.06	6,019.29	539.62	-1,208.49	-89.14	0.00	0.00	0.00
6,300.01	16.00	294.06	6,115.42	550.86	-1,233.65	-91.00	0.00	0.00	0.00
6,400.01	16.00	294.06	6,211.55	562.09	-1,258.81	-92.86	0.00	0.00	0.00
6,500.01	16.00	294.06	6,307.67	573.33	-1,283.98	-94.71	0.00	0.00	0.00
6,600.01	16.00	294.06	6,403.80	584.56	-1,309.14	-96.57	0.00	0.00	0.00
6,700.01	16.00	294.06	6,499.93	595.80	-1,334.30	-98.43	0.00	0.00	0.00
6,800.01	16.00	294.06	6,596.06	607.03	-1,359.46	-100.28	0.00	0.00	0.00
6,818.54	16.00	294.06	6,613.87	609.12	-1,364.12	-100.63	0.00	0.00	0.00
6,900.01	14.78	263.34	6,692.55	612.49	-1,384.73	-96.68	10.00	-1.49	-37.70
7,000.01	18.71	230.82	6,788.49	600.85	-1,409.91	-77.06	10.00	3.93	-32.53
7,100.01	26.03	212.60	6,881.02	572.15	-1,434.22	-41.73	10.00	7.31	-18.22
7,200.01	34.64	202.43	6,967.30	527.28	-1,456.94	8.22	10.00	8.61	-10.17
7,300.01	43.79	196.01	7,044.73	467.60	-1,477.38	71.29	10.00	9.15	-6.43
7,400.01	53.19	191.45	7,110.95	394.92	-1,494.91	145.55	10.00	9.40	-4.56
7,408.53	54.00	191.12	7,116.00	388.20	-1,496.25	152.32	10.02	9.51	-3.92
<b>Sharon Springs</b>									
7,500.02	62.73	187.90	7,163.94	311.45	-1,509.00	228.76	10.00	9.54	-3.51
7,534.87	66.08	186.82	7,179.00	280.28	-1,513.03	259.40	10.00	9.60	-3.12
<b>Niobrara A</b>									
7,600.02	72.35	184.92	7,202.11	219.73	-1,519.23	318.37	10.00	9.62	-2.90
7,620.56	74.33	184.36	7,208.00	200.11	-1,520.82	337.33	10.01	9.65	-2.76
<b>Niobrara B</b>									
7,700.02	82.00	182.25	7,224.28	122.53	-1,525.28	411.68	10.00	9.66	-2.65
7,789.84	90.69	179.96	7,230.00	33.00	-1,527.00	496.30	10.00	9.67	-2.55
<b>7"</b>									
7,791.33	90.69	179.97	7,229.98	31.51	-1,527.00	497.69	1.00	-0.36	0.93
7,800.02	90.69	179.97	7,229.88	22.83	-1,527.00	505.84	0.00	0.00	0.00
7,900.02	90.69	179.97	7,228.68	-77.17	-1,526.95	599.67	0.00	0.00	0.00
8,000.02	90.69	179.97	7,227.49	-177.16	-1,526.90	693.50	0.00	0.00	0.00
8,100.02	90.69	179.97	7,226.29	-277.15	-1,526.86	787.32	0.00	0.00	0.00
8,200.02	90.69	179.97	7,225.09	-377.15	-1,526.81	881.15	0.00	0.00	0.00
8,300.02	90.69	179.97	7,223.90	-477.14	-1,526.77	974.98	0.00	0.00	0.00
8,400.02	90.69	179.97	7,222.70	-577.13	-1,526.72	1,068.81	0.00	0.00	0.00
8,500.02	90.69	179.97	7,221.50	-677.13	-1,526.68	1,162.63	0.00	0.00	0.00
8,600.02	90.69	179.97	7,220.31	-777.12	-1,526.63	1,256.46	0.00	0.00	0.00
8,700.02	90.69	179.97	7,219.11	-877.11	-1,526.58	1,350.29	0.00	0.00	0.00
8,800.02	90.69	179.97	7,217.91	-977.10	-1,526.54	1,444.11	0.00	0.00	0.00
8,900.02	90.69	179.97	7,216.72	-1,077.10	-1,526.49	1,537.94	0.00	0.00	0.00
9,000.02	90.69	179.97	7,215.52	-1,177.09	-1,526.45	1,631.77	0.00	0.00	0.00

# Anadarko Petroleum Corp

## Planning Report

<b>Database:</b>	edmp	<b>Local Co-ordinate Reference:</b>	Well Camp 36N-26HZ
<b>Company:</b>	US ROCKIES REGION PLANNING	<b>TVD Reference:</b>	rkb + gl @ 5030.00ft
<b>Project:</b>	COLORADO NORTHERN ZONE - 83	<b>MD Reference:</b>	rkb + gl @ 5030.00ft
<b>Site:</b>	WELD_CAMP 5 PAD	<b>North Reference:</b>	True
<b>Well:</b>	Camp 36N-26HZ	<b>Survey Calculation Method:</b>	Minimum Curvature
<b>Wellbore:</b>	Camp 36N-26HZ		
<b>Design:</b>	Camp 36N-26HZ (wp01)		

Planned Survey										
Measured Depth (ft)	Inclination (°)	Azimuth (°)	Vertical Depth (ft)	+N/-S (ft)	+E/-W (ft)	Vertical Section (ft)	Dogleg Rate (°/100usft)	Build Rate (°/100usft)	Turn Rate (°/100usft)	
9,100.02	90.69	179.97	7,214.32	-1,277.08	-1,526.40	1,725.60	0.00	0.00	0.00	
9,200.02	90.69	179.97	7,213.13	-1,377.08	-1,526.36	1,819.42	0.00	0.00	0.00	
9,300.02	90.69	179.97	7,211.93	-1,477.07	-1,526.31	1,913.25	0.00	0.00	0.00	
9,400.02	90.69	179.97	7,210.73	-1,577.06	-1,526.27	2,007.08	0.00	0.00	0.00	
9,500.02	90.69	179.97	7,209.54	-1,677.06	-1,526.22	2,100.90	0.00	0.00	0.00	
9,600.02	90.69	179.97	7,208.34	-1,777.05	-1,526.17	2,194.73	0.00	0.00	0.00	
9,700.02	90.69	179.97	7,207.14	-1,877.04	-1,526.13	2,288.56	0.00	0.00	0.00	
9,800.02	90.69	179.97	7,205.95	-1,977.04	-1,526.08	2,382.39	0.00	0.00	0.00	
9,900.02	90.69	179.97	7,204.75	-2,077.03	-1,526.04	2,476.21	0.00	0.00	0.00	
10,000.02	90.69	179.97	7,203.55	-2,177.02	-1,525.99	2,570.04	0.00	0.00	0.00	
10,100.02	90.69	179.97	7,202.36	-2,277.01	-1,525.95	2,663.87	0.00	0.00	0.00	
10,200.02	90.69	179.97	7,201.16	-2,377.01	-1,525.90	2,757.69	0.00	0.00	0.00	
10,300.02	90.69	179.97	7,199.96	-2,477.00	-1,525.86	2,851.52	0.00	0.00	0.00	
10,400.02	90.69	179.97	7,198.77	-2,576.99	-1,525.81	2,945.35	0.00	0.00	0.00	
10,500.02	90.69	179.97	7,197.57	-2,676.99	-1,525.76	3,039.18	0.00	0.00	0.00	
10,600.02	90.69	179.97	7,196.37	-2,776.98	-1,525.72	3,133.00	0.00	0.00	0.00	
10,700.02	90.69	179.97	7,195.18	-2,876.97	-1,525.67	3,226.83	0.00	0.00	0.00	
10,800.02	90.69	179.97	7,193.98	-2,976.97	-1,525.63	3,320.66	0.00	0.00	0.00	
10,900.02	90.69	179.97	7,192.78	-3,076.96	-1,525.58	3,414.48	0.00	0.00	0.00	
11,000.02	90.69	179.97	7,191.59	-3,176.95	-1,525.54	3,508.31	0.00	0.00	0.00	
11,100.02	90.69	179.97	7,190.39	-3,276.94	-1,525.49	3,602.14	0.00	0.00	0.00	
11,200.02	90.69	179.97	7,189.19	-3,376.94	-1,525.45	3,695.97	0.00	0.00	0.00	
11,300.02	90.69	179.97	7,188.00	-3,476.93	-1,525.40	3,789.79	0.00	0.00	0.00	
11,400.02	90.69	179.97	7,186.80	-3,576.92	-1,525.35	3,883.62	0.00	0.00	0.00	
11,500.02	90.69	179.97	7,185.60	-3,676.92	-1,525.31	3,977.45	0.00	0.00	0.00	
11,600.02	90.69	179.97	7,184.41	-3,776.91	-1,525.26	4,071.27	0.00	0.00	0.00	
11,700.02	90.69	179.97	7,183.21	-3,876.90	-1,525.22	4,165.10	0.00	0.00	0.00	
11,800.02	90.69	179.97	7,182.01	-3,976.90	-1,525.17	4,258.93	0.00	0.00	0.00	
11,900.02	90.69	179.97	7,180.82	-4,076.89	-1,525.13	4,352.76	0.00	0.00	0.00	
11,968.26	90.69	179.97	7,180.00	-4,145.12	-1,525.10	4,416.78	0.00	0.00	0.00	
Camp 36N-26HZ BHL										

Design Targets									
Target Name	Dip Angle (°)	Dip Dir. (°)	TVD (ft)	+N/-S (ft)	+E/-W (ft)	Northing (usft)	Easting (usft)	Latitude	Longitude
Camp 36N-26HZ BHL - hit/miss target - Shape - plan hits target center - Point	0.00	0.00	7,180.00	-4,145.12	-1,525.10	1,313,054.09	3,211,477.87	40.190252	-104.743015

Casing Points					
Measured Depth (ft)	Vertical Depth (ft)	Name	Casing Diameter (")	Hole Diameter (")	
900.00	900.00	9 5/8"	9-5/8	12-1/4	
7,789.84	7,230.00	7"	7	8-3/4	

**Anadarko Petroleum Corp**  
 Planning Report

<b>Database:</b>	edmp	<b>Local Co-ordinate Reference:</b>	Well Camp 36N-26HZ
<b>Company:</b>	US ROCKIES REGION PLANNING	<b>TVD Reference:</b>	rkb + gl @ 5030.00ft
<b>Project:</b>	COLORADO NORTHERN ZONE - 83	<b>MD Reference:</b>	rkb + gl @ 5030.00ft
<b>Site:</b>	WELD_CAMP 5 PAD	<b>North Reference:</b>	True
<b>Well:</b>	Camp 36N-26HZ	<b>Survey Calculation Method:</b>	Minimum Curvature
<b>Wellbore:</b>	Camp 36N-26HZ		
<b>Design:</b>	Camp 36N-26HZ (wp01)		

Formations						
Measured Depth (ft)	Vertical Depth (ft)	Name	Lithology	Dip (°)	Dip Direction (°)	
4,170.13	4,068.00	Parkman				
4,698.59	4,576.00	Sussex				
7,408.53	7,116.00	Sharon Springs				
7,534.87	7,179.00	Niobrara A				
7,620.56	7,208.00	Niobrara B				