
XTO ENERGY INC EBUSINESS

Hocker 4-35

La Plata County , Colorado

Cement Surface Casing

11-Nov-2011

Job Site Documents

The Road to Excellence Starts with Safety

Sold To #: 353810		Ship To #: 2890090		Quote #:		Sales Order #: 9052834	
Customer: XTO ENERGY INC EBUSINESS				Customer Rep:			
Well Name: Hocker			Well #: 4-35			API/UWI #:	
Field:		City (SAP): IGNACIO		County/Parish: La Plata		State: Colorado	
Contractor: AWS			Rig/Platform Name/Num: AWS 580				
Job Purpose: Cement Surface Casing							
Well Type: Producing Well				Job Type: Cement Surface Casing			
Sales Person: SNYDER, RANDALL			Srvc Supervisor: DOBBS, GARY			MBU ID Emp #: 122012	

Job Personnel

HES Emp Name	Exp Hrs	Emp #	HES Emp Name	Exp Hrs	Emp #	HES Emp Name	Exp Hrs	Emp #
DOBBS, GARY D	10	122012	MILLER, DAVID A	10	484499	TYLER, LUTHER	10	375283

Equipment

HES Unit #	Distance-1 way	HES Unit #	Distance-1 way	HES Unit #	Distance-1 way	HES Unit #	Distance-1 way
10025031	60 mile	10804563	60 mile	11223557	60 mile	11583928	60 mile

Job Hours

Date	On Location Hours	Operating Hours	Date	On Location Hours	Operating Hours	Date	On Location Hours	Operating Hours
11/11/11	10	3						

TOTAL *Total is the sum of each column separately*

Job

Job Times

Formation Name	Top	Bottom	Called Out	Date	Time	Time Zone
Formation Depth (MD)			On Location	10 - Nov - 2011	21:00	MST
Form Type		BHST	Job Started	10 - Nov - 2011	23:55	MST
Job depth MD	334. ft	Job Depth TVD	Job Completed	11 - Nov - 2011	08:23	MST
Water Depth		Wk Ht Above Floor	Job Completed	11 - Nov - 2011	08:55	MST
Perforation Depth (MD)	From	To	Departed Loc	11 - Nov - 2011	10:00	MST

Well Data

Description	New / Used	Max pressure psig	Size in	ID in	Weight lbm/ft	Thread	Grade	Top MD ft	Bottom MD ft	Top TVD ft	Bottom TVD ft
12 1/4" Open Hole				12.25				.	400.	.	400.
8 5/8" Surface Casing	Unknown		8.625	8.097	24.		J-55	.	400.	.	400.

Sales/Rental/3rd Party (HES)

Description	Qty	Qty uom	Depth	Supplier
PLUG,CMTG, TOP, 8 5/8, HWE, 7.20 MIN/8.09 MA	1	EA		
SUGAR, GRANULATED, IMPERIAL	50	LB		

Tools and Accessories

Type	Size	Qty	Make	Depth	Type	Size	Qty	Make	Depth	Type	Size	Qty	Make
Guide Shoe					Packer					Top Plug			
Float Shoe					Bridge Plug					Bottom Plug			
Float Collar					Retainer					SSR plug set			
Insert Float										Plug Container			
Stage Tool										Centralizers			

Miscellaneous Materials

Gelling Agt	Conc	Surfactant	Conc	Acid Type	Qty	Conc %
Treatment Fld	Conc	Inhibitor	Conc	Sand Type	Size	Qty

Fluid Data

Stage/Plug #: 1									
Fluid #	Stage Type	Fluid Name	Qty	Qty uom	Mixing Density lbm/gal	Yield ft ³ /sk	Mix Fluid Gal/sk	Rate bbl/min	Total Mix Fluid Gal/sk

Stage/Plug #: 1									
Fluid #	Stage Type	Fluid Name	Qty	Qty uom	Mixing Density lbm/gal	Yield ft ³ /sk	Mix Fluid Gal/sk	Rate bbl/min	Total Mix Fluid Gal/sk
1	Water Spacer		10.00	bbl	8.33	.0	.0	.0	
2	Primary Cement	CMT - PREMIUM - CLASS G, 94 LB SK (100003685)	245.0	sacks	15.8	1.17	5.0		5.0
	94 lbm	CMT - PREMIUM - CLASS G REG OR TYPE V, BULK (100003685)							
	2 %	CALCIUM CHLORIDE - HI TEST PELLETT (100005053)							
	0.125 lbm	POLY-E-FLAKE (101216940)							
	4.998 Gal	FRESH WATER							
3	H2O Displacement		15.00	bbl	8.33	.0	.0	.0	
Calculated Values		Pressures		Volumes					
Displacement	15.3	Shut In: Instant	165	Lost Returns		Cement Slurry	51	Pad	
Top Of Cement	0	5 Min		Cement Returns	25	Actual Displacement	15.5	Treatment	
Frac Gradient		15 Min		Spacers		Load and Breakdown		Total Job	
Rates									
Circulating	3	Mixing	4	Displacement	3	Avg. Job	3		
Cement Left In Pipe	Amount	49 ft	Reason	Shoe Joint					
Frac Ring # 1 @	ID	Frac ring # 2 @	ID	Frac Ring # 3 @	ID	Frac Ring # 4 @	ID		
The Information Stated Herein Is Correct				Customer Representative Signature					

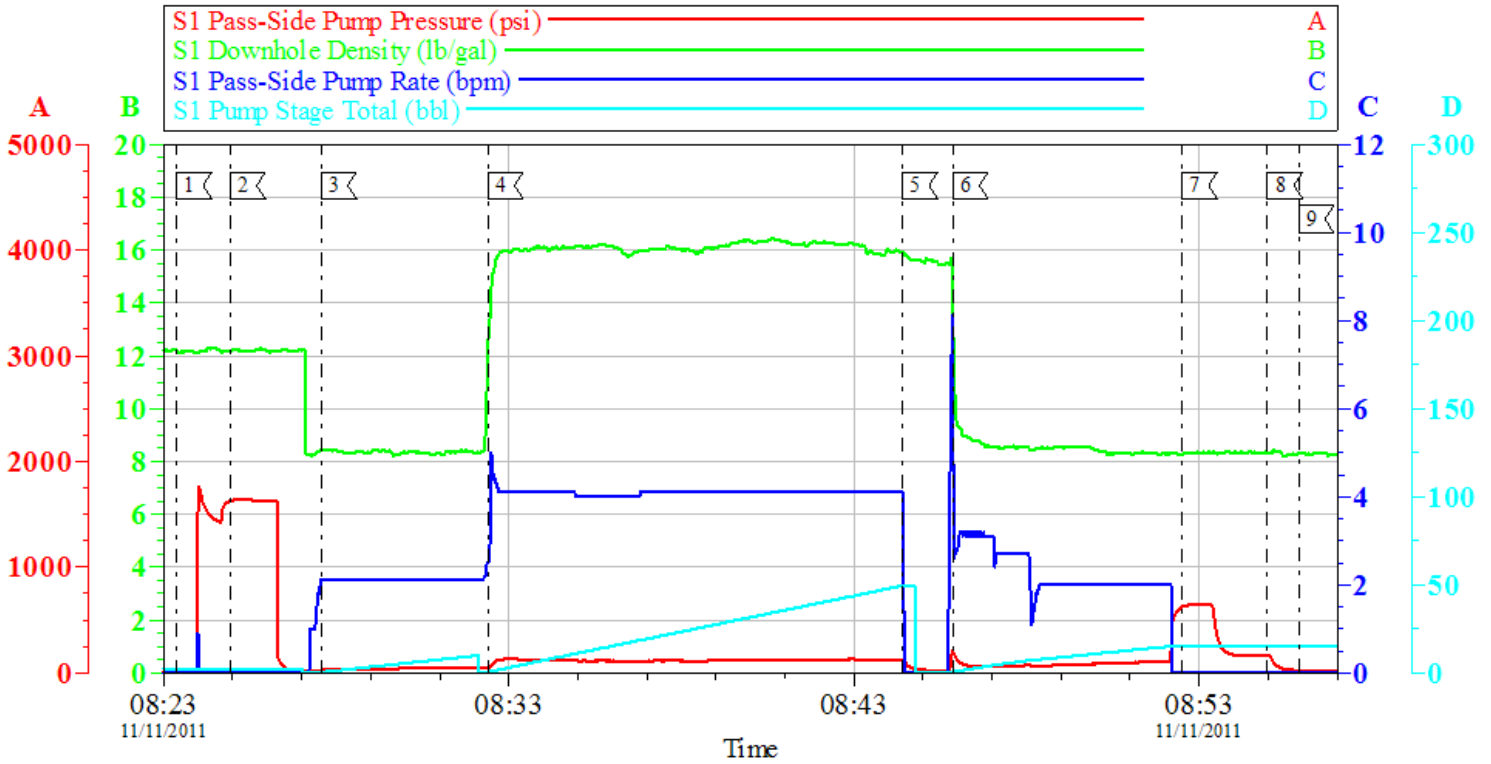
The Road to Excellence Starts with Safety

Sold To #: 353810	Ship To #: 2890090	Quote #:	Sales Order #: 9052834
Customer: XTO ENERGY INC EBUSINESS		Customer Rep:	
Well Name: Hocker		Well #: 4-35	API/UWI #:
Field:	City (SAP): IGNACIO	County/Parish: La Plata	State: Colorado
Legal Description:			
Lat:		Long:	
Contractor: AWS		Rig/Platform Name/Num: AWS 580	
Job Purpose: Cement Surface Casing			Ticket Amount:
Well Type: Producing Well		Job Type: Cement Surface Casing	
Sales Person: SNYDER, RANDALL		Srvc Supervisor: DOBBS, GARY	MBU ID Emp #: 122012

Activity Description	Date/Time	Cht #	Rate bbl/min	Volume bbl		Pressure psig		Comments
				Stage	Total	Tubing	Casing	
Pre-Convoy Safety Meeting	11/10/2011 22:30							ALL HES EMPLOYEES
Arrive at Location from Service Center	11/10/2011 23:55							
Assessment Of Location Safety Meeting	11/11/2011 00:05							ALL HES EMPLOYEES
Wait on Customer or Customer Sub-Contractor Equip	11/11/2011 00:15							WAIT ON RIG CREW TO GET RIGHT ELEVATORS, PULL DRILL PIPE, AND RUN CASING
Wait on Customer or Customer Sub-Contractor Equipm	11/11/2011 06:45							CASING ON BOTTOM, CASING SET @ 290' 8 5/8" 24# CASING
Pre-Rig Up Safety Meeting	11/11/2011 07:00							ALL HES EMPLOYEES
Rig-Up Equipment	11/11/2011 07:10							RIG UP PUMP TRUCK, 1 BULK TRUCK, AND PICKUP
Pre-Job Safety Meeting	11/11/2011 08:10							EVERYONE OL LOCATION
Start Job	11/11/2011 08:23							
Test Lines	11/11/2011 08:24					1500.0		
Pump Spacer 1	11/11/2011 08:27		3	15			30.0	FRESH WATER
Pump Tail Cement	11/11/2011 08:32		4	51			49.0	MIX AND PUMP 245 SKS OF TYPE G MIXED @ 15.8#, 1.17 YEILD, 5.0 GPS FRESH WATER
Drop Top Plug	11/11/2011 08:44							
Pump Displacement	11/11/2011 08:45		4	5			123.0	FRESH WATER

Activity Description	Date/Time	Cht #	Rate bbl/min	Volume bbl		Pressure psig		Comments
				Stage	Total	Tubing	Casing	
Bump Plug	11/11/2011 08:52		2	10.3	15.3		624.0	FRESH WATER
Shut In Well	11/11/2011 08:54						165.0	SHUT IN WELL WITH 165 PSI LEFT ON CASING
Cement Returns to Surface	11/11/2011 08:54							CIRCULATED 25 BBLS OF CEMENT TO PIT
End Job	11/11/2011 08:55							THANK YOU FOR CALLING HALLIBURTON, DONNY, DAVE & LUTHER

XTO
HOCHER #3-35 / SURFACE



Local Event Log							
Intersection		SPPP	Intersection	SPPP	Intersection	SPPP	
1	START JOB	08:23:23	11.00	2	TEST LINES	08:24:56	1628
3	PUMP SPACER 1	08:27:34	27.30	4	PUMP CEMENT	08:32:24	49.02
5	DROP PLUG	08:44:25	123.0	6	PUMP DISPL.	08:45:52	203.7
7	BUMP PLUG	08:52:31	624.8	8	SHUT IN WELL	08:54:59	165.0
9	END JOB	08:55:53	25.00				

Customer: XTO	Job Date: 11-Nov-2011	Sales Order #: 9052834
Well Description: HOCHER #3-35	Job Type: SURFACE	ADC Used: YES
Customer Rep: MARK NIETZEL	Service Supervisor: DONNY DOBBS	Operator/Pump: DAVE MILLER / 11223557

OptiCem v6.4.9
11-Nov-11 09:05