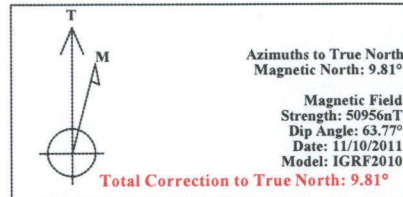
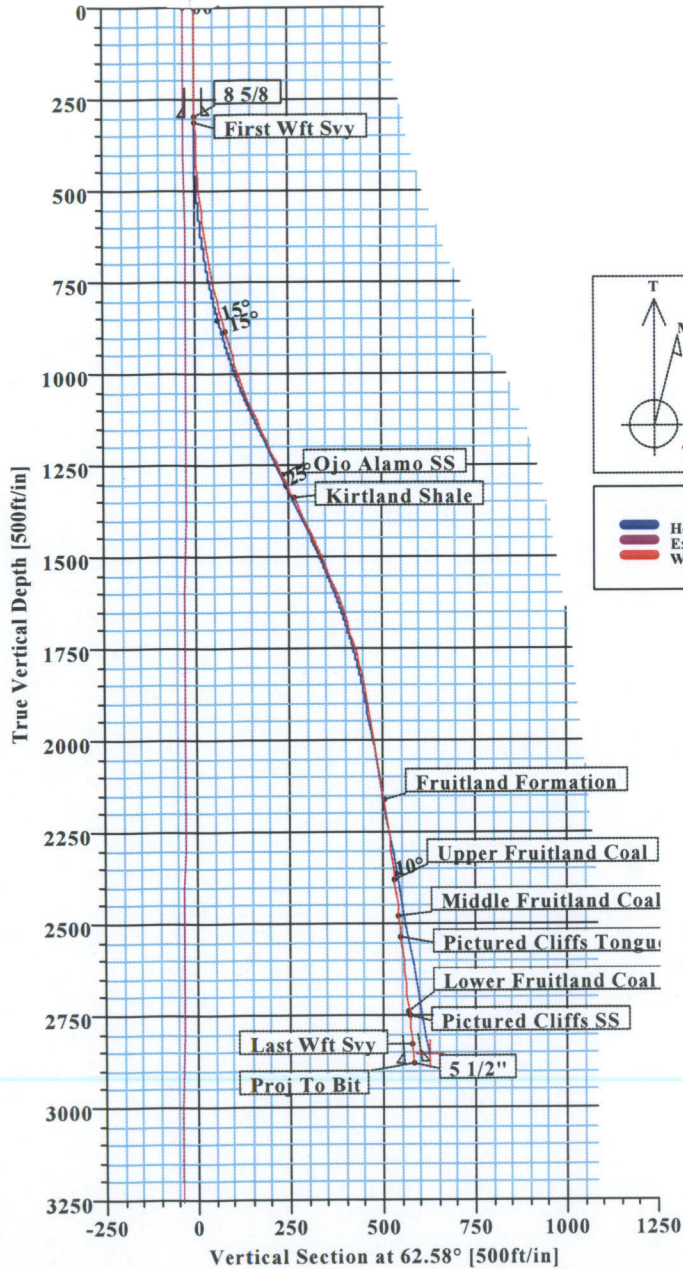




Hocker #4-35  
La Plata County, CO



KB ELEV: 6355  
GL ELEV: 6343



**LEGEND**

- Hocker #4-35, Plan #1
- Exist. Tiffany #2 (1)
- Wft Svy

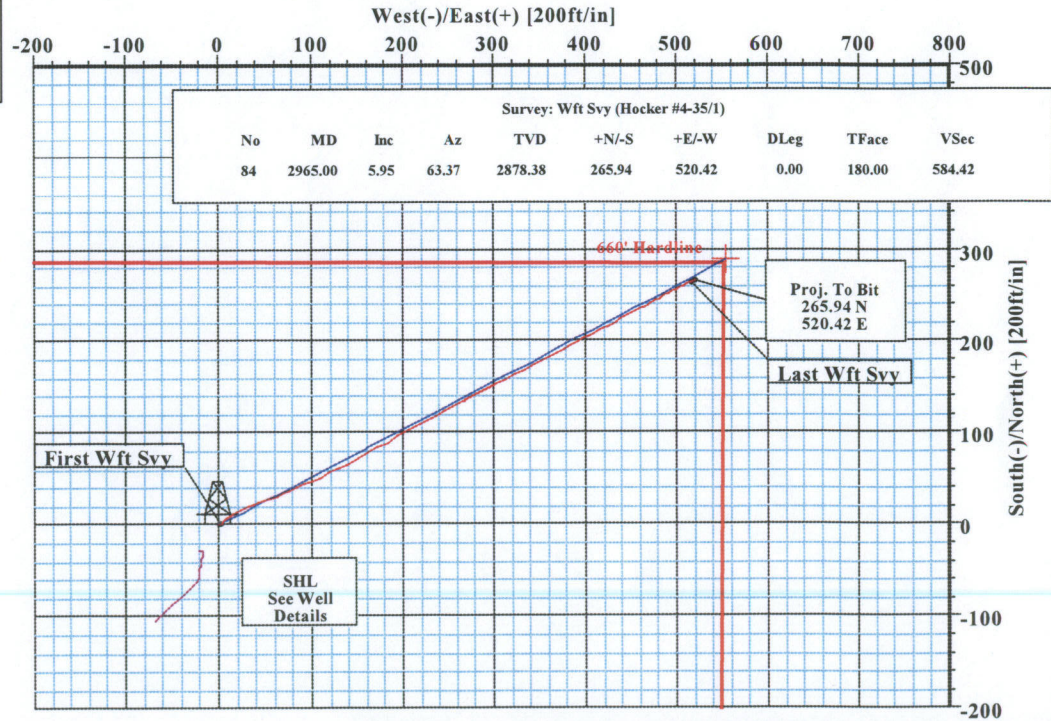
SECTION DETAILS										
Sec	MD	Inc	Azi	TVD	+N/-S	+E/-W	DLeg	TFace	VSec	Target
1	0.00	0.00	62.58	0.00	0.00	0.00	0.00	0.00	0.00	
2	360.00	0.00	62.58	360.00	0.00	0.00	0.00	0.00	0.00	
3	1193.33	25.00	62.58	1167.14	82.41	158.83	3.00	62.58	178.94	
4	1505.17	25.00	62.58	1449.76	143.11	275.81	0.00	0.00	310.73	
5	2005.17	10.00	62.58	1925.26	212.16	408.89	3.00	180.00	460.65	
6	2949.25	10.00	62.58	2855.00	287.66	554.40	0.00	0.00	624.59	Pbhl

WELL DETAILS							
Name	+N/-S	+E/-W	Northing	Easting	Latitude	Longitude	Slot
Hocker #4-35	0.00	0.00	1151818.66	2395143.67	37°03'54.610N	107°34'23.090W	N/A

TARGET DETAILS						
Name	TVD	+N/-S	+E/-W	Latitude	Longitude	Shape
Pbhl	2855.00	287.66	554.40	37°03'57.454N	107°34'16.250W	Point

FIELD DETAILS		
La Plata County, CO (NAD 83)		
Geodetic System:	US State Plane Coordinate System 1983	
Ellipsoid:	GRS 1980	
Zone:	Colorado, Southern Zone	
Magnetic Model:	IGRF2010	
System Datum:	Mean Sea Level	
Local North:	True North	

SITE DETAILS		
Hocker #4-35		
Site Centre Latitude:	37°03'54.610N	
Site Centre Longitude:	107°34'23.090W	
Ground Level:	6343.00	
Positional Uncertainty:	0.00	
Convergence:	-1.27	



Survey: Wft Svy (Hocker #4-35/1)  
Created By: Russell W. Joyner  
Date: 11/16/2011



# Weatherford International Ltd.

## WFT Survey Report Lat, Long



Company: XTO	Date: 11/16/2011	Time: 05:09:46	Page: 1
Field: La Plata County, CO (NAD 83)	Co-ordinate(NE) Reference:	Well: Hocker #4-35, True North	
Site: Hocker #4-35	Vertical (TVD) Reference:	SITE 6355.0	
Well: Hocker #4-35	Section (VS) Reference:	Well (0.00N,0.00E,62.58Azi)	
Wellpath: 1	Survey Calculation Method:	Minimum Curvature	Db: Sybase

Survey: Wft Svy	Start Date: 11/14/2011
Company: Weatherford International Ltd.	Engineer: Russell W. Joyner
Tool: MWD;MWD - Standard	Tied-to: From Surface

Field: La Plata County, CO (NAD 83)

Map System: US State Plane Coordinate System 1983	Map Zone: Colorado, Southern Zone
Geo Datum: GRS 1980	Coordinate System: Well Centre
Sys Datum: Mean Sea Level	Geomagnetic Model: IGRF2010

Site: Hocker #4-35

Site Position:	Northing: 1151818.66 ft	Latitude: 37 3 54.610 N
From: Geographic	Easting: 2395143.67 ft	Longitude: 107 34 23.090 W
Position Uncertainty: 0.00 ft		North Reference: True
Ground Level: 6343.00 ft		Grid Convergence: -1.27 deg

Well: Hocker #4-35	Slot Name:	
Well Position: +N/-S 0.00 ft	Northing: 1151818.66 ft	Latitude: 37 3 54.610 N
+E/-W 0.00 ft	Easting: 2395143.67 ft	Longitude: 107 34 23.090 W
Position Uncertainty: 0.00 ft		

Wellpath: 1	Drilled From: Surface		
Current Datum: SITE	Tie-on Depth: 0.00 ft		
Magnetic Data: 11/10/2011	Above System Datum: Mean Sea Level		
Field Strength: 50956 nT	Declination: 9.81 deg		
Vertical Section: Depth From (TVD)	Mag Dip Angle: 63.77 deg		
ft	+N/-S ft	+E/-W ft	Direction deg
0.00	0.00	0.00	62.58

**Survey**

MD ft	Incl deg	Azim deg	TVD ft	N/S ft	E/W ft	VS ft	DLS deg/100ft	Lat	Min	Sec	Long	Min	Sec	Comment
0.00	0.00	0.00	0.00	0.00	0.00	0.00	0.00	37	3	54.610	107	34	23.090	
295.00	0.78	62.81	294.99	0.92	1.79	2.01	0.26	37	3	54.619	107	34	23.068	8 5/8
314.00	0.83	62.81	313.99	1.04	2.02	2.27	0.26	37	3	54.620	107	34	23.065	First Wft Sv
344.00	0.91	58.17	343.99	1.26	2.42	2.73	0.36	37	3	54.622	107	34	23.060	
375.00	0.99	57.04	374.98	1.54	2.85	3.24	0.27	37	3	54.625	107	34	23.055	
404.00	2.13	53.69	403.97	2.00	3.50	4.02	3.94	37	3	54.630	107	34	23.047	
434.00	3.81	47.44	433.93	3.00	4.68	5.54	5.69	37	3	54.640	107	34	23.032	
465.00	5.75	46.81	464.82	4.76	6.57	8.02	6.26	37	3	54.657	107	34	23.009	
496.00	6.94	50.69	495.63	7.01	9.15	11.35	4.08	37	3	54.679	107	34	22.977	
526.00	7.38	52.19	525.40	9.34	12.08	15.02	1.59	37	3	54.702	107	34	22.941	
556.00	7.44	49.81	555.14	11.77	15.08	18.81	1.04	37	3	54.726	107	34	22.904	
586.00	7.69	61.06	584.89	14.00	18.32	22.71	5.00	37	3	54.748	107	34	22.864	
616.00	8.25	66.44	614.60	15.83	22.05	26.87	3.11	37	3	54.766	107	34	22.818	
647.00	9.25	68.01	645.23	17.65	26.40	31.56	3.32	37	3	54.784	107	34	22.764	
678.00	10.38	68.81	675.78	19.59	31.32	36.82	3.67	37	3	54.804	107	34	22.704	
709.00	10.88	69.06	706.25	21.65	36.65	42.50	1.62	37	3	54.824	107	34	22.638	
740.00	11.38	68.94	736.67	23.79	42.24	48.45	1.61	37	3	54.845	107	34	22.569	
770.00	12.25	69.94	766.03	25.95	47.99	54.55	2.98	37	3	54.866	107	34	22.498	
802.00	13.31	68.56	797.24	28.46	54.61	61.58	3.45	37	3	54.891	107	34	22.416	
833.00	14.34	68.03	827.34	31.20	61.49	68.95	3.35	37	3	54.918	107	34	22.331	
864.00	14.81	68.44	857.34	34.09	68.74	76.71	1.55	37	3	54.947	107	34	22.242	
894.00	15.00	67.06	886.33	37.01	75.88	84.40	1.34	37	3	54.976	107	34	22.154	
926.00	16.50	67.81	917.13	40.34	83.90	93.05	4.73	37	3	55.009	107	34	22.055	
957.00	17.00	66.94	946.81	43.78	92.15	101.96	1.80	37	3	55.043	107	34	21.953	



# Weatherford International Ltd.

## WFT Survey Report Lat, Long



<b>Company:</b> XTO	<b>Date:</b> 11/16/2011	<b>Time:</b> 05:09:46	<b>Page:</b> 2
<b>Field:</b> La Plata County, CO (NAD 83)	<b>Co-ordinate(NE) Reference:</b> Well: Hocker #4-35, True North		
<b>Site:</b> Hocker #4-35	<b>Vertical (TVD) Reference:</b> SITE 6355.0		
<b>Well:</b> Hocker #4-35	<b>Section (VS) Reference:</b> Well (0.00N,0.00E,62.58Azi)		
<b>Wellpath:</b> 1	<b>Survey Calculation Method:</b> Minimum Curvature	<b>Db:</b> Sybase	

### Survey

MD ft	Incl deg	Azim deg	TVD ft	N/S ft	E/W ft	VS ft	DLS deg/100ft	Lat	Min	Sec	Long	Min	Sec	Comment
989.00	17.69	65.44	977.36	47.64	100.87	111.48	2.57	37	3	55.081	107	34	21.845	
1021.00	18.69	64.56	1007.76	51.86	109.92	121.46	3.24	37	3	55.123	107	34	21.734	
1052.00	19.56	63.94	1037.05	56.27	119.07	131.61	2.88	37	3	55.166	107	34	21.621	
1084.00	20.31	63.06	1067.13	61.14	128.83	142.52	2.52	37	3	55.214	107	34	21.501	
1115.00	21.50	63.06	1096.09	66.15	138.70	153.58	3.84	37	3	55.264	107	34	21.379	
1147.00	22.53	62.42	1125.75	71.65	149.36	165.57	3.30	37	3	55.318	107	34	21.247	
1178.00	23.13	61.81	1154.33	77.27	159.99	177.60	2.08	37	3	55.374	107	34	21.116	
1210.00	24.19	61.06	1183.64	83.42	171.27	190.44	3.44	37	3	55.435	107	34	20.977	
1241.00	25.00	62.06	1211.82	89.56	182.61	203.34	2.94	37	3	55.495	107	34	20.837	
1273.00	25.19	62.69	1240.80	95.85	194.64	216.91	1.02	37	3	55.558	107	34	20.689	
1305.00	25.31	62.31	1269.75	102.16	206.74	230.56	0.63	37	3	55.620	107	34	20.539	
1337.00	25.50	61.44	1298.65	108.63	218.85	244.29	1.31	37	3	55.684	107	34	20.390	
1368.00	25.50	61.44	1326.63	115.01	230.57	257.63	0.00	37	3	55.747	107	34	20.245	
1432.00	25.94	61.56	1384.29	128.26	254.98	285.40	0.69	37	3	55.878	107	34	19.944	
1463.00	25.81	61.94	1412.18	134.66	266.90	298.93	0.68	37	3	55.941	107	34	19.797	
1558.00	22.82	64.61	1498.75	152.29	301.80	338.03	3.35	37	3	56.116	107	34	19.367	
1590.00	22.41	64.48	1528.29	157.58	312.91	350.33	1.29	37	3	56.168	107	34	19.229	
1621.00	21.69	63.94	1557.02	162.65	323.39	361.96	2.41	37	3	56.218	107	34	19.100	
1653.00	20.63	62.69	1586.86	167.83	333.71	373.51	3.60	37	3	56.269	107	34	18.973	
1685.00	19.50	62.06	1616.92	172.92	343.44	384.49	3.60	37	3	56.320	107	34	18.853	
1715.00	18.75	60.69	1645.26	177.63	352.07	394.31	2.91	37	3	56.366	107	34	18.746	
1747.00	17.38	60.31	1675.69	182.51	360.70	404.23	4.30	37	3	56.414	107	34	18.640	
1779.00	16.31	60.56	1706.31	187.09	368.77	413.49	3.35	37	3	56.460	107	34	18.540	
1810.00	15.75	59.81	1736.11	191.34	376.20	422.05	1.93	37	3	56.502	107	34	18.449	
1842.00	15.13	61.04	1766.95	195.55	383.60	430.56	2.19	37	3	56.543	107	34	18.357	
1874.00	14.31	62.94	1797.90	199.37	390.78	438.69	2.97	37	3	56.581	107	34	18.269	
1906.00	12.75	64.06	1829.01	202.71	397.48	446.17	4.94	37	3	56.614	107	34	18.186	
1937.00	11.56	64.94	1859.32	205.53	403.37	452.70	3.88	37	3	56.642	107	34	18.113	
1968.00	10.56	63.44	1889.74	208.11	408.72	458.64	3.36	37	3	56.668	107	34	18.047	
2000.00	10.25	63.44	1921.21	210.70	413.89	464.42	0.97	37	3	56.693	107	34	17.984	
2032.00	10.50	63.19	1952.69	213.28	419.04	470.18	0.79	37	3	56.719	107	34	17.920	
2063.00	10.63	63.94	1983.17	215.81	424.13	475.87	0.61	37	3	56.744	107	34	17.857	
2094.00	9.88	62.81	2013.67	218.29	429.06	481.38	2.50	37	3	56.768	107	34	17.796	
2126.00	9.42	63.16	2045.22	220.72	433.84	486.75	1.45	37	3	56.792	107	34	17.737	
2158.00	8.38	63.06	2076.83	222.96	438.26	491.70	3.25	37	3	56.814	107	34	17.683	
2190.00	8.38	61.19	2108.49	225.14	442.38	496.36	0.85	37	3	56.836	107	34	17.632	
2221.00	8.38	62.94	2139.16	227.26	446.37	500.88	0.82	37	3	56.857	107	34	17.583	
2253.00	8.44	62.06	2170.82	229.42	450.52	505.56	0.44	37	3	56.878	107	34	17.532	
2284.00	8.25	62.06	2201.49	231.53	454.50	510.06	0.61	37	3	56.899	107	34	17.483	
2315.00	7.44	60.56	2232.20	233.56	458.21	514.29	2.69	37	3	56.919	107	34	17.437	
2347.00	7.00	59.56	2263.94	235.56	461.70	518.30	1.43	37	3	56.939	107	34	17.394	
2378.00	6.81	62.44	2294.72	237.37	464.95	522.03	1.27	37	3	56.957	107	34	17.354	
2409.00	6.88	62.31	2325.50	239.08	468.23	525.72	0.23	37	3	56.974	107	34	17.313	
2441.00	6.63	62.44	2357.27	240.83	471.56	529.49	0.78	37	3	56.991	107	34	17.272	
2472.00	6.56	60.81	2388.07	242.52	474.69	533.05	0.64	37	3	57.008	107	34	17.233	
2502.00	6.44	62.81	2417.88	244.12	477.69	536.44	0.85	37	3	57.024	107	34	17.196	
2532.00	6.25	61.56	2447.69	245.67	480.62	539.76	0.78	37	3	57.039	107	34	17.160	
2563.00	6.00	60.44	2478.52	247.27	483.51	543.06	0.89	37	3	57.055	107	34	17.125	
2595.00	5.81	62.31	2510.35	248.85	486.40	546.35	0.84	37	3	57.070	107	34	17.089	
2625.00	6.00	61.81	2540.19	250.30	489.13	549.44	0.66	37	3	57.085	107	34	17.055	
2655.00	5.81	63.81	2570.03	251.71	491.87	552.53	0.93	37	3	57.099	107	34	17.021	
2685.00	5.69	62.81	2599.88	253.06	494.56	555.53	0.52	37	3	57.112	107	34	16.988	



# Weatherford International Ltd.

## WFT Survey Report Lat, Long



<b>Company:</b> XTO	<b>Date:</b> 11/16/2011	<b>Time:</b> 05:09:46	<b>Page:</b> 3
<b>Field:</b> La Plata County, CO (NAD 83)	<b>Co-ordinate(NE) Reference:</b> Well: Hocker #4-35, True North		
<b>Site:</b> Hocker #4-35	<b>Vertical (TVD) Reference:</b> SITE 6355.0		
<b>Well:</b> Hocker #4-35	<b>Section (VS) Reference:</b> Well (0.00N,0.00E,62.58Azi)		
<b>Wellpath:</b> 1	<b>Survey Calculation Method:</b> Minimum Curvature	<b>Db:</b> Sybase	

### Survey

MD ft	Incl deg	Azim deg	TVD ft	N/S ft	E/W ft	VS ft	DLS deg/100ft	Lat	Min	Sec	Long	Min	Sec	Comment
2715.00	5.94	62.19	2629.72	254.46	497.25	558.57	0.86	37	3	57.126	107	34	16.955	
2746.00	5.81	64.06	2660.56	255.90	500.08	561.74	0.75	37	3	57.140	107	34	16.920	
2776.00	6.00	63.44	2690.40	257.26	502.85	564.83	0.67	37	3	57.153	107	34	16.886	
2807.00	5.88	64.69	2721.23	258.66	505.74	568.04	0.57	37	3	57.167	107	34	16.850	
2837.00	5.94	62.94	2751.07	260.03	508.51	571.12	0.63	37	3	57.181	107	34	16.816	
2867.00	5.93	63.21	2780.91	261.43	511.27	574.23	0.10	37	3	57.195	107	34	16.782	
2897.00	6.05	64.99	2810.75	262.80	514.09	577.36	0.74	37	3	57.208	107	34	16.747	
2915.00	5.95	63.37	2828.65	263.62	515.78	579.24	1.09	37	3	57.216	107	34	16.726	Last Wft Svy
2965.00	5.95	63.37	2878.38	265.94	520.42	584.42	0.00	37	3	57.239	107	34	16.669	5 1/2"

### Casing Points

MD ft	TVD ft	Diameter in	Hole Size in	Name
295.00	294.99	8.625	12.251	8 5/8
2965.00	2878.38	5.500	7.875	5 1/2"

### Annotation

MD ft	TVD ft	
314.00	313.99	First Wft Svy
2915.00	2828.65	Last Wft Svy
2965.00	2878.38	Proj To Bit

### Formations

MD ft	TVD ft	Formations	Lithology	Dip Angle deg	Dip Direction deg
1309.71	1274.00	Ojo Alamo SS		0.00	0.00
1381.71	1339.00	Kirtland Shale		0.00	0.00
2241.06	2159.00	Fruitland Formation		0.00	0.00
2463.88	2380.00	Upper Fruitland Coal		0.00	0.00
2561.48	2477.00	Middle Fruitland Coal*		0.00	0.00
2623.81	2539.00	Pictured Cliffs Tongue		0.00	0.00
2823.85	2738.00	Lower Fruitland Coal		0.00	0.00
2835.92	2750.00	Pictured Cliffs SS		0.00	0.00

