

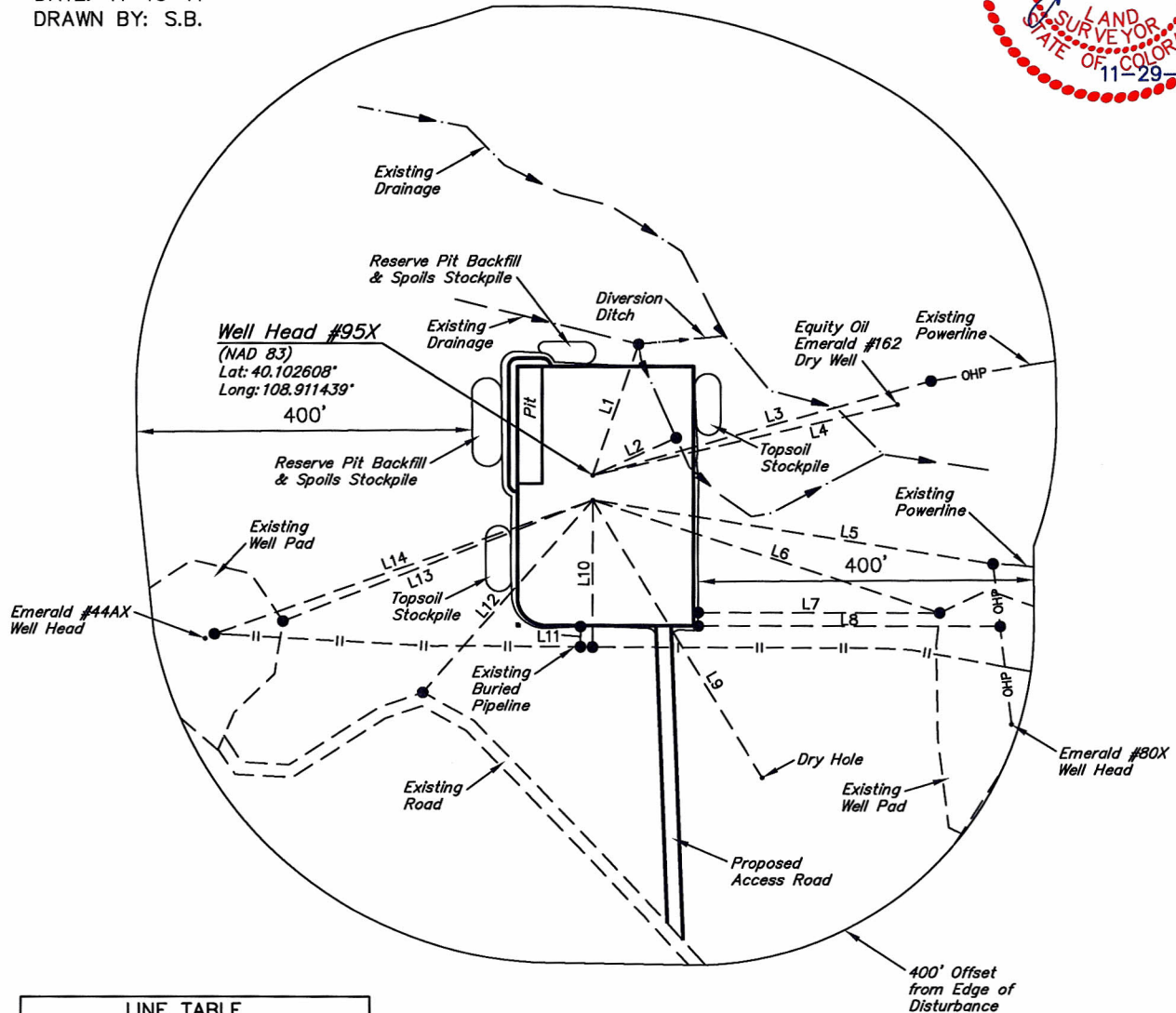
CHEVRON U.S.A., INC.

ADDENDUM TO LEGAL PLAT FOR

EMERALD #95X & #96X
SECTION 36, T2N, R103W, 6th P.M.
SW 1/4 NW 1/4



SCALE: 1" = 200'
DATE: 11-15-11
DRAWN BY: S.B.



LINE TABLE		
LINE	DIRECTION	LENGTH
L1	N29°35'54"W	166.15'
L2	N16°57'17"E	109.14'
L3	N25°29'56"E	418.57'
L4	N28°01'34"E	372.82'
L5	N50°11'21"E	482.81'
L6	N59°08'40"E	434.33'
L7	N41°12'03"E	287.62'
L8	N41°12'03"E	359.80'
L9	S80°08'12"E	387.88'
L10	S48°40'52"E	175.41'
L11	S48°20'33"E	24.24'
L12	S07°21'46"E	305.98'
L13	S19°49'07"W	396.26'
L14	S21°39'10"W	478.36'