

Steil Surveying Services, LLC

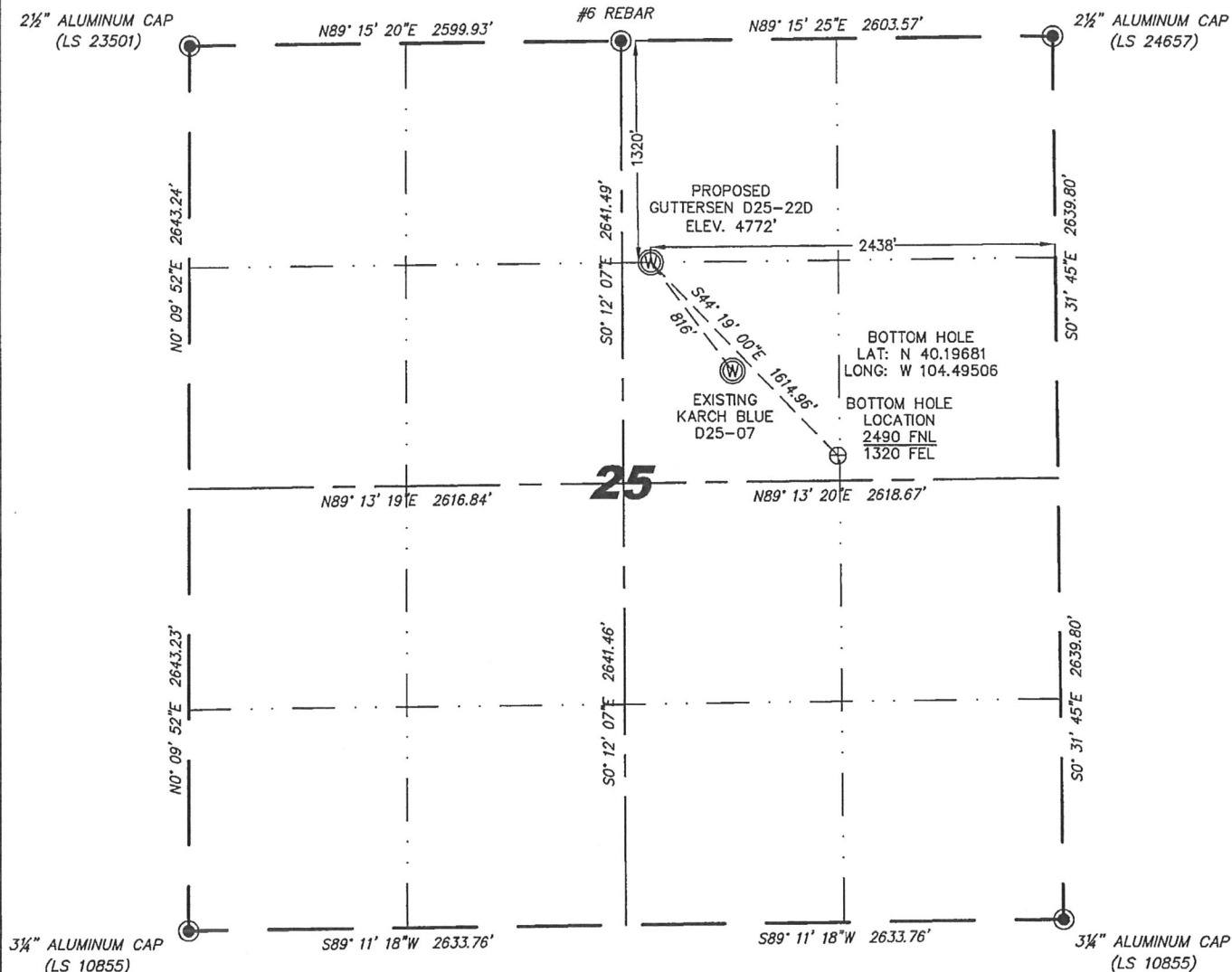
1102 West 19th Street P.O. BOX 2073

Cheyenne, Wyoming 82001

WELL LOCATION CERTIFICATE

THIS MAP DOES NOT REPRESENT A BOUNDARY SURVEY

SECTION 25
TOWNSHIP 3 NORTH
RANGE 64 WEST



0 1000

Scale: 1" = 1000'

IN ACCORDANCE WITH A REQUEST FROM BRIAN DEROSE - NOBLE ENERGY INC, STEIL SURVEYING SERVICES, LLC HAS DETERMINED THE LOCATION OF THE GUTTERSEN D25-22D WELL TO BE 1320' FNL, 2438' FEL, AS MEASURED AT NINETY (90) DEGREES FROM THE SECTION LINES, SECTION 25, TOWNSHIP 3 NORTH, RANGE 64 WEST, 6TH PRINCIPLE MERIDIAN, WELD COUNTY, COLORADO.

I HEREBY CERTIFY THAT THIS WELL LOCATION CERTIFICATE WAS PREPARED BY ME, OR UNDER MY DIRECT SUPERVISION, THAT THE FIELD WORK WAS COMPLETED ON 08/23/2011, FOR AND ON BEHALF OF NOBLE ENERGY INC, THAT IT IS NOT A LAND SURVEY PLAT OR AN IMPROVEMENT SURVEY PLAT, AND THAT IT IS NOT TO BE REUED UPON FOR ESTABLISHMENT OF FENCE, BUILDING, OR OTHER FUTURE IMPROVEMENT LINES.

NOTES:

- 1) BASIS OF BEARINGS FOR THIS MAP ARE BASED UPON GPS OBSERVATIONS MADE ON 04/07/2011 BETWEEN MONUMENTS LOCATED AT THE SOUTHEAST SECTION CORNER AND THE NORTHEAST SECTION CORNER OF SAID SECTION AND WITH ALL BEARINGS SHOWN HEREON RELATIVE THERETO.
- 2) COORDINATES SHOWN ARE COLORADO STATE PLANE (NORTH ZONE) NAD 83
- 3) ELEVATIONS ARE BASED UPON NGS OPUS SOLUTION NAVD 88 DATUM.
- 4) THE NEAREST EXISTING WELL IS: KARCH BLUE D25-07, 816' SOUTHEAST.
- 5) SEE LOCATION DRAWING FOR ALL IMPROVEMENTS WITHIN VISIBLE IMPROVEMENT LIMIT.
- 6) THE LOCATION FALLS IN PASTURE LAND.

LATITUDE & LONGITUDE (NAD 83 SURFACE HOLE):

LATITUDE: N 40.20002°

LONGITUDE: W 104.49905°

PDOP: 2.1

QUARTER-QUARTER: SW/4NE/4

NEAREST PROPERTY LINE: 1056' SOUTHWEST

LEGEND

(A) FOUND SURVEY MONUMENT PER MONUMENT RECORD - EXCEPTIONS NOTED.

(C) CALCULATED DIMENSION



Completed 08/29/2011

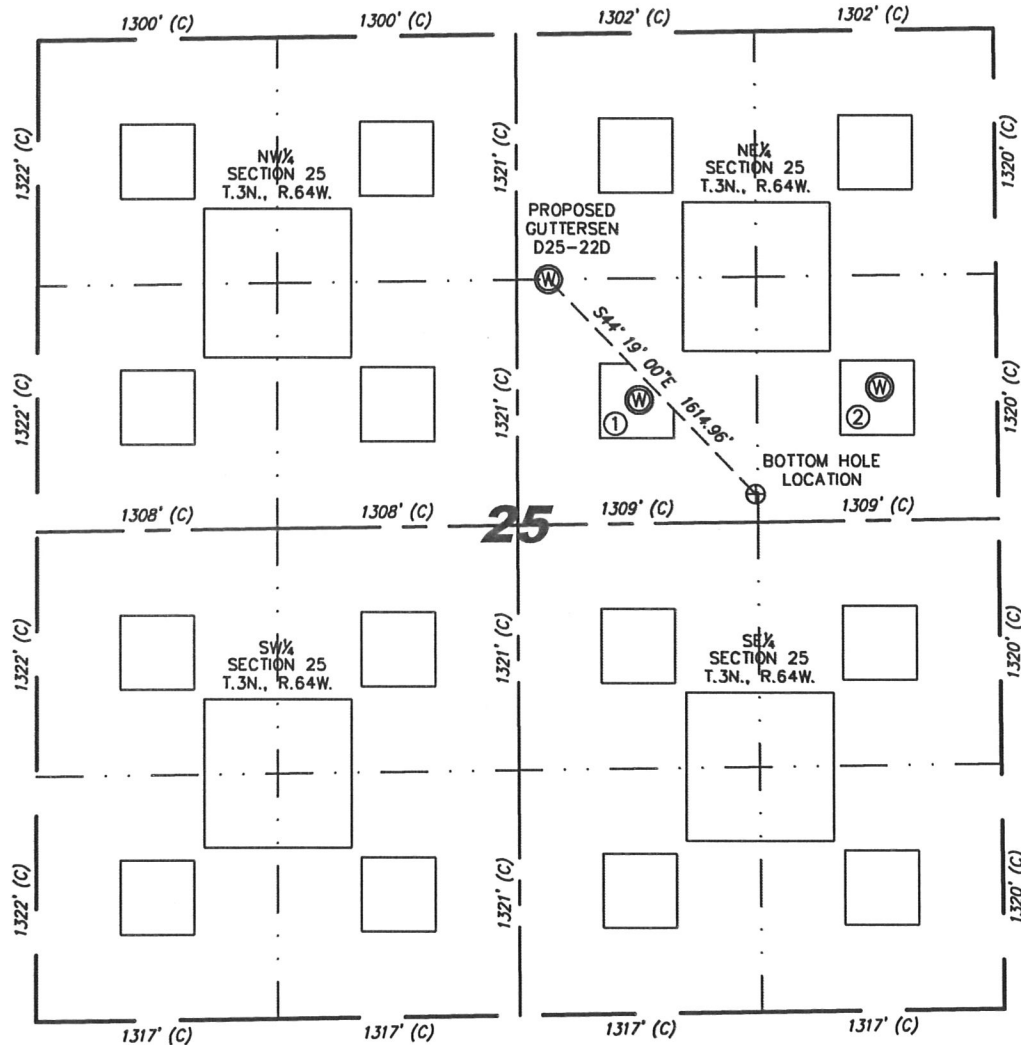
David C. Holmes
Professional Land Surveyor Registration No. 32828
State of Colorado

JOB #: 11086

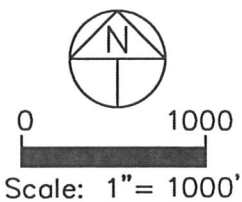
NOTICE: According to Colorado law you MUST commence any legal action based upon any defect in this W.L.C. within three years after you first discover such defect. In no event may any action based upon any defect in this W.L.C. be commenced more than ten years from this said date of the certification shown hereon.

SITE SKETCH - GUTTERSEN D25-22D

SECTION 25
TOWNSHIP 3 NORTH
RANGE 64 WEST



①	②
KARCH BLUE D25-07	KARCH BLUE D25-08
SW/NE SEC. 25	SE/NE SEC. 25
1975' FNL	1923' FNL
1949' FEL	640' FEL
EL 4774'	EL 4771'
N 40.19822	N 40.19837
W 104.49731	W 104.49262
PDOP 1.9	PDOP 3.6



NOTES:

- 1) THIS SKETCH DOES NOT REPRESENT A BOUNDARY SURVEY.
- 2) THE DATUM FOR THE LATITUDES AND LONGITUDES ON THIS SKETCH IS NAD83.