

NOTES:

- All bearings and distances are **GRID**, based on the Colorado State Plane Coordinate System, North Zone, North American Datum 1983 from GPS observations occupying a WHS control point (5/8" rebar) and having the Location and Elevation derived from an Opus Solution.
- Vertical Datum used is of NAVD 88.
- Record Bearings and Distances as shown are based on the General Land Office Survey plat approved on the 16th day of December 1872.



WILLIAM H. SMITH & ASSOCIATES P.C.
SURVEYING CONSULTANTS
 550 EAST SECOND NORTH PHONE: 307-875-3638
 GREEN RIVER, WY 307-875-3639
 www.whsmithpc.com

CONFIDENTIALITY NOTES:

The information contained in this plat is legally privileged and confidential information intended only for the use of the recipients. If you are not the intended recipients, you are hereby notified that any use, dissemination, distribution or copying of this information is strictly prohibited.

LOCATION:

CROW VALLEY
 7-62-35-2H &
 7-62-26-2H
 WITHIN THE NE1/4
 NW1/4 SECTION 35,
 T 7 N, R 62 W,
 6TH PM.
 WELD COUNTY,
 COLORADO

MARATHON OIL COMPANY
 PO BOX 3128, HOUSTON TX, 77253
 5555 SAN FELIPE, HOUSTON TX, 77056

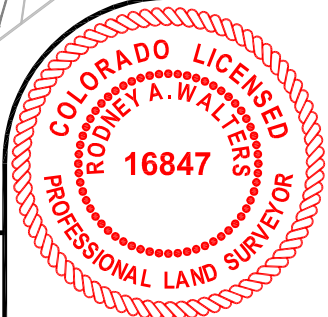
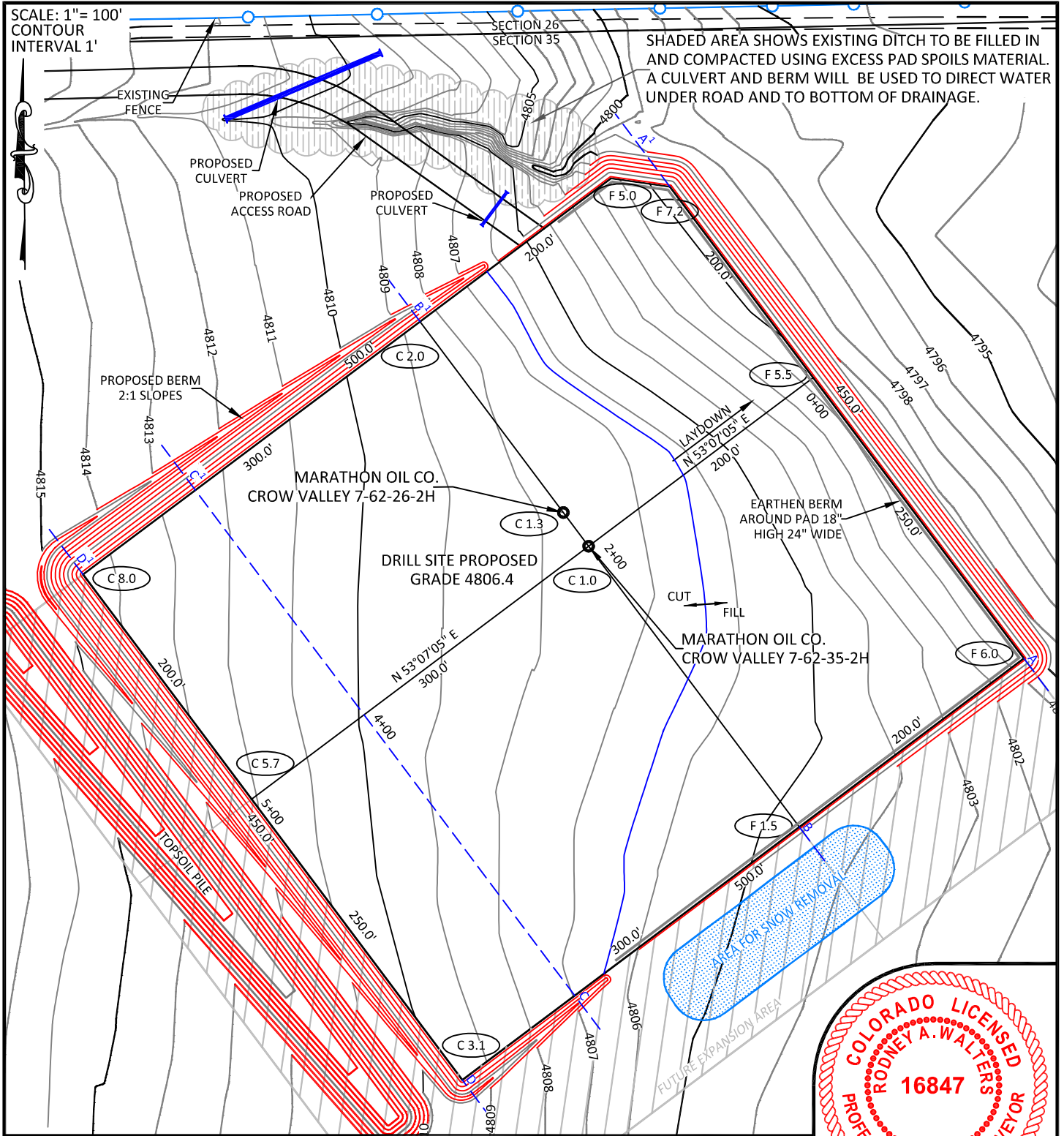
MULTI WELL PAD

SCALE: 1"=1500'
 DATE: 11/28/2011 EXHIBIT "P"
 SHEET 15 OF 15

DRAWN BY: BW	CHECKED BY: RAW
PROJECT NO: 762352H	JOB NO: 2011001
REVISIONS:	

SCALE: 1" = 100'
CONTOUR
INTERVAL 1'

SHADED AREA SHOWS EXISTING DITCH TO BE FILLED IN AND COMPACTED USING EXCESS PAD SPOILS MATERIAL. A CULVERT AND BERM WILL BE USED TO DIRECT WATER UNDER ROAD AND TO BOTTOM OF DRAINAGE.



CONFIDENTIALITY NOTES:
The information contained in this plat is legally privileged and confidential information intended only for the use of the recipients. If you are not the intended recipients, you are hereby notified that any use, dissemination, distribution or copying of this information is strictly prohibited.

WILLIAM H. SMITH & ASSOCIATES P.C.
SURVEYING CONSULTANTS
550 EAST SECOND NORTH GREEN RIVER, WY
PHONE: 307-875-3638 307-875-3639
www.whsmithpc.com

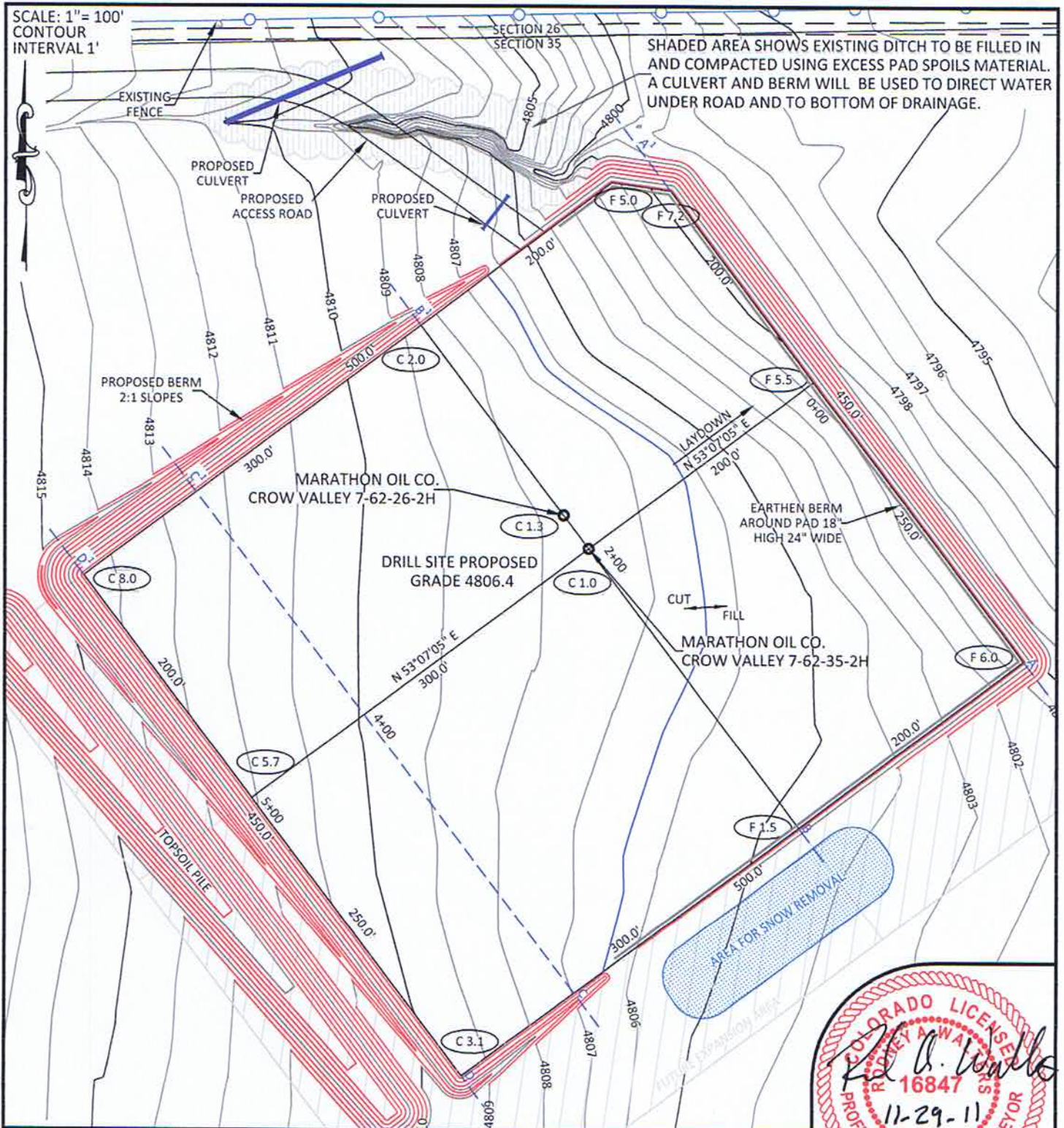
CONSTRUCTION DATA	
CUT SLOPE:	3:1
FILL SLOPE:	3:1
TOTAL CUT:	17,696 CU. YDS.
TOTAL FILL:	12,113 CU. YDS.
TOP SOIL AT 6":	4,839 CU. YDS.
SPOIL:	745 CU. YDS.
DISTURBED AREA:	261,291 SQ. FT.
DISTURBED AREA:	6.00 ACRES

LOCATION:
CROW VALLEY 7-62-35-2H & 7-62-26-2H
WITHIN THE NE1/4 NW1/4 SECTION 35, T 7 N, R 62 W, 6TH PM.
WELD COUNTY, COLORADO

MARATHON OIL COMPANY
PO BOX 3128, HOUSTON TX, 77253
5555 SAN FELIPE, HOUSTON TX, 77056

CONSTRUCTION LAYOUT	
366' FNL	1837' FWL
SCALE: 1"=100'	EXHIBIT "I"
DATE: 11/28/2011	SHEET 8 OF 15

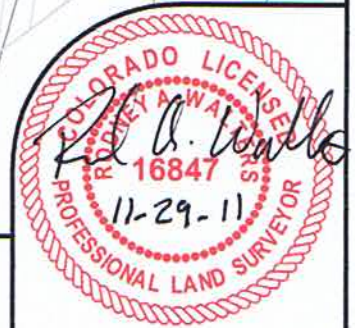
SCALE: 1" = 100'
CONTOUR
INTERVAL 1'



SHADED AREA SHOWS EXISTING DITCH TO BE FILLED IN AND COMPACTED USING EXCESS PAD SPOILS MATERIAL. A CULVERT AND BERM WILL BE USED TO DIRECT WATER UNDER ROAD AND TO BOTTOM OF DRAINAGE.

CONFIDENTIALITY NOTES:

The information contained in this plat is legally privileged and confidential information intended only for the use of the recipients. If you are not the intended recipients, you are hereby notified that any use, dissemination, distribution or copying of this information is strictly prohibited.



WILLIAM H. SMITH & ASSOCIATES P.C.
SURVEYING CONSULTANTS
550 EAST SECOND NORTH GREEN RIVER, WY
PHONE: 307-875-3638
307-875-3639
www.whsmithpc.com

CONSTRUCTION DATA

CUT SLOPE:	3:1
FILL SLOPE:	3:1
TOTAL CUT:	17,696 CU. YDS.
TOTAL FILL:	12,113 CU. YDS.
TOP SOIL AT 6":	4,839 CU. YDS.
SPOIL:	745 CU. YDS.
DISTURBED AREA:	261,291 SQ. FT.
DISTURBED AREA:	6.00 ACRES

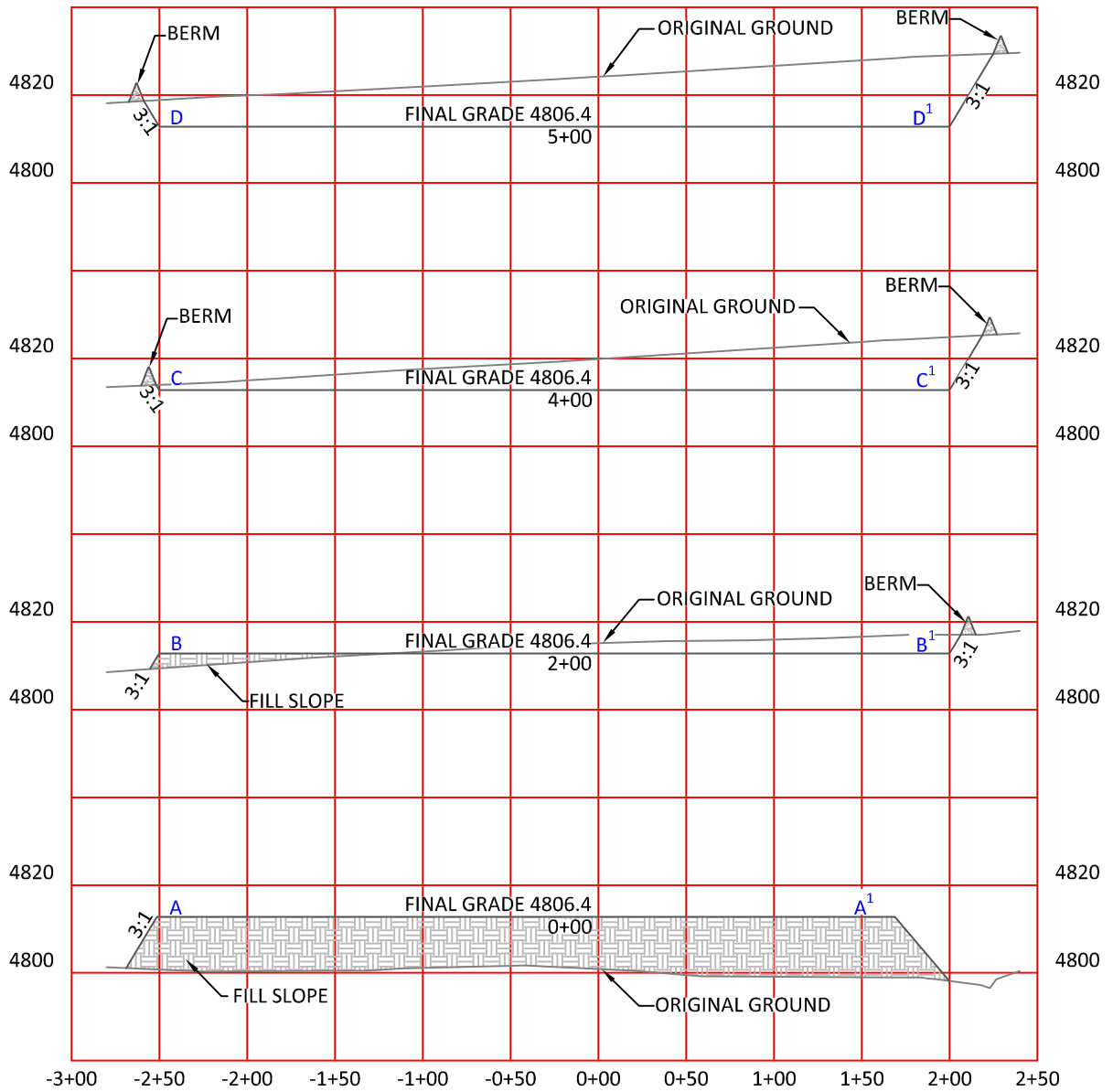
LOCATION:

CROW VALLEY
7-62-35-2H &
7-62-26-2H
WITHIN THE NE1/4
NW1/4 SECTION 35,
T 7 N, R 62 W,
6TH PM.
WELD COUNTY,
COLORADO

MARATHON OIL COMPANY
PO BOX 3128, HOUSTON TX, 77253
5555 SAN FELIPE, HOUSTON TX, 77056

CONSTRUCTION LAYOUT

366' FNL	1837' FWL
SCALE: 1"=100'	EXHIBIT "I"
DATE: 11/28/2011	SHEET 8 OF 15



HORIZONTAL SCALE: 1"=100'
 VERTICAL SCALE: 1"=40'

CONFIDENTIALITY NOTES:

The information contained in this plat is legally privileged and confidential information intended only for the use of the recipients. If you are not the intended recipients, you are hereby notified that any use, dissemination, distribution or copying of this information is strictly prohibited.



**WILLIAM H. SMITH
& ASSOCIATES P.C.**

SURVEYING CONSULTANTS
 550 EAST SECOND NORTH PHONE: 307-875-3638
 GREEN RIVER, WY 307-875-3639
 www.whsmithpc.com

CONSTRUCTION DATA

CUT SLOPE:	3:1
FILL SLOPE:	3:1
TOTAL CUT:	17,696 CU. YDS.
TOTAL FILL:	12,113 CU. YDS.
TOP SOIL AT 6":	4,839 CU. YDS.
SPOIL:	745 CU. YDS.
DISTURBED AREA:	261,291 SQ. FT.
DISTURBED AREA:	6.00 ACRES

LOCATION:

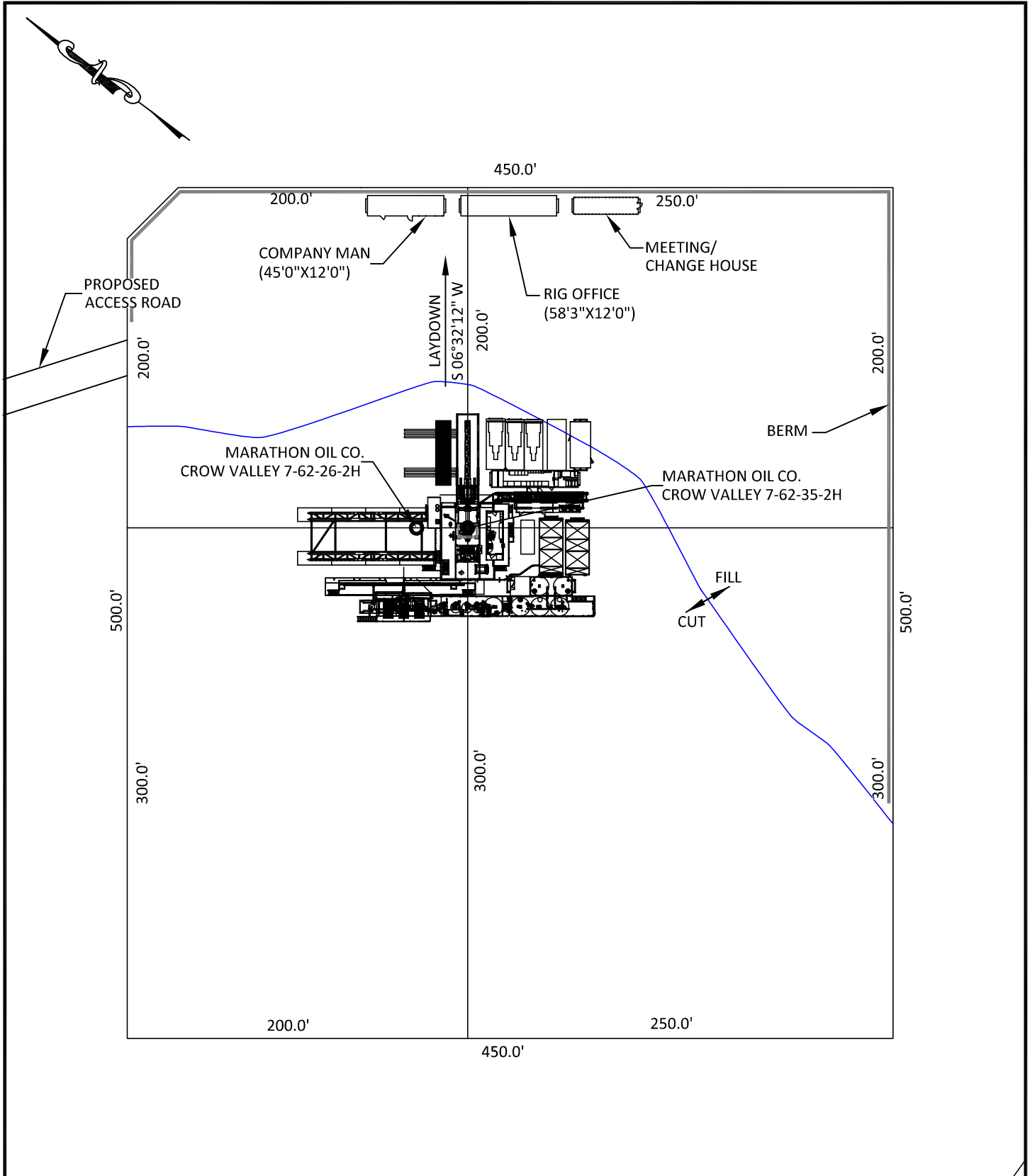
CROW VALLEY
 7-62-35-2H &
 7-62-26-2H
 WITHIN THE NE1/4
 NW1/4 SECTION 35,
 T 7 N, R 62 W,
 6TH PM.
 WELD COUNTY,
 COLORADO

MARATHON OIL COMPANY
 PO BOX 3128, HOUSTON TX, 77253
 5555 SAN FELIPE, HOUSTON TX, 77056

**CONSTRUCTION LAYOUT
CROSS SECTIONS**

SCALE: NOTED	EXHIBIT "J"
DATE: 11/28/2011	SHEET 9 OF 15

DRAWN BY: BW	CHECKED BY: RAW
PROJECT NO: 762352H	JOB NO: 2011001
REVISIONS:	



**WILLIAM H. SMITH
& ASSOCIATES P.C.**

SURVEYING CONSULTANTS
 550 EAST SECOND NORTH PHONE: 307-875-3638
 GREEN RIVER, WY 307-875-3639
 www.whsmithpc.com

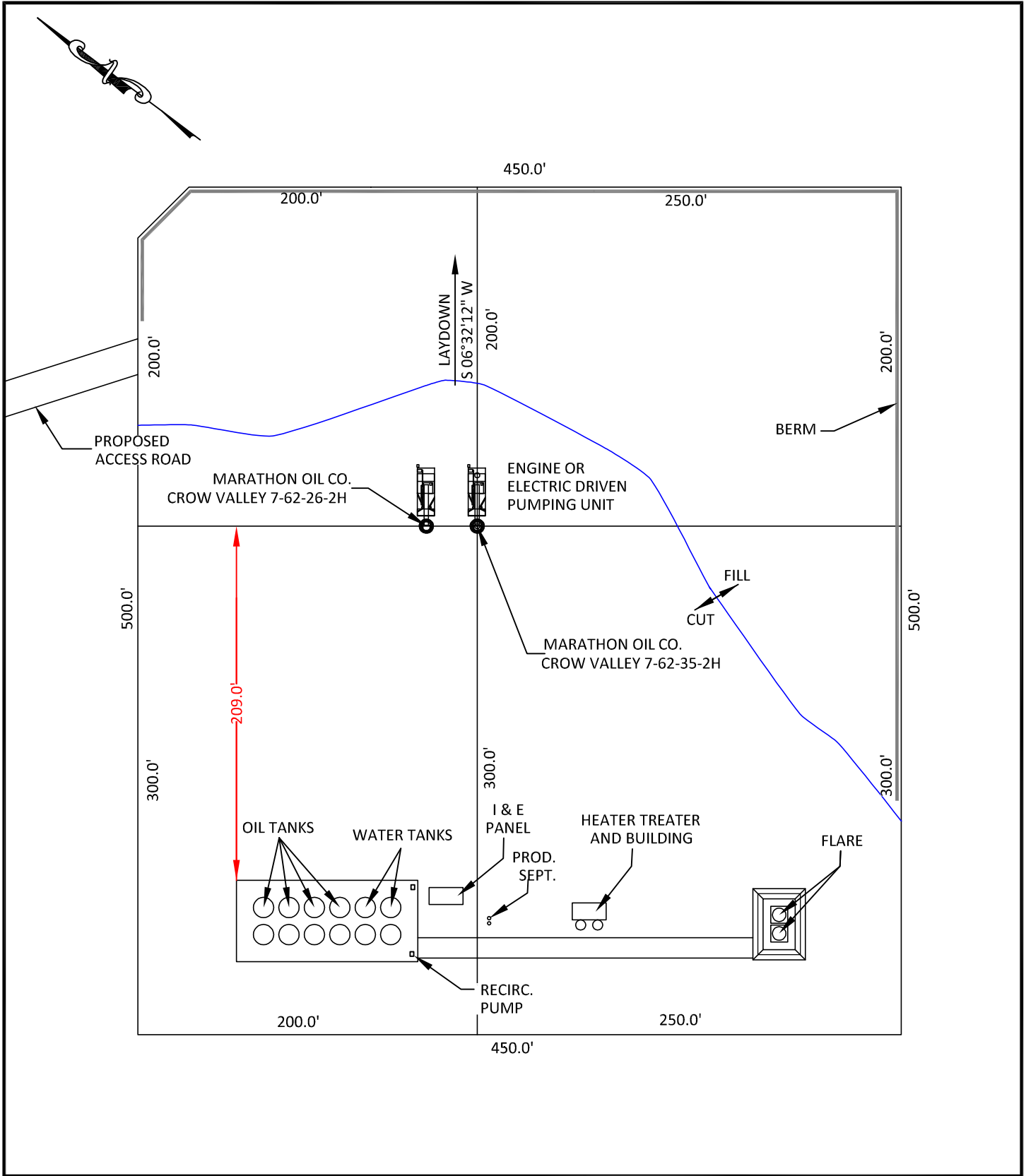
DRAWN BY: BW	CHECKED BY: RAW
PROJECT NO: 762352H	JOB NO: 2011001
REVISIONS:	

CONFIDENTIALITY NOTES:
 The information contained in this plat is legally privileged and confidential information intended only for the use of the recipients. If you are not the intended recipients, you are hereby notified that any use, dissemination, distribution or copying of this information is strictly prohibited.

LOCATION:
 CROW VALLEY
 7-62-35-2H &
 7-62-26-2H
 WITHIN THE NE1/4
 NW1/4 SECTION 35,
 T 7 N, R 62 W,
 6TH PM.
 WELD COUNTY,
 COLORADO

MARATHON OIL COMPANY
 PO BOX 3128, HOUSTON TX, 77253
 5555 SAN FELIPE, HOUSTON TX, 77056

DRILLING FACILITIES	
SCALE: 1"=80'	EXHIBIT "K"
DATE: 11/28/2011	SHEET 10 OF 15



**WILLIAM H. SMITH
& ASSOCIATES P.C.**

SURVEYING CONSULTANTS
 550 EAST SECOND NORTH PHONE: 307-875-3638
 GREEN RIVER, WY 307-875-3639
 www.whsmithpc.com

DRAWN BY: BW	CHECKED BY: RAW
PROJECT NO: 762352H	JOB NO: 2011001
REVISIONS:	

CONFIDENTIALITY NOTES:
 The information contained in this plat is legally privileged and confidential information intended only for the use of the recipients. If you are not the intended recipients, you are hereby notified that any use, dissemination, distribution or copying of this information is strictly prohibited.

LOCATION:

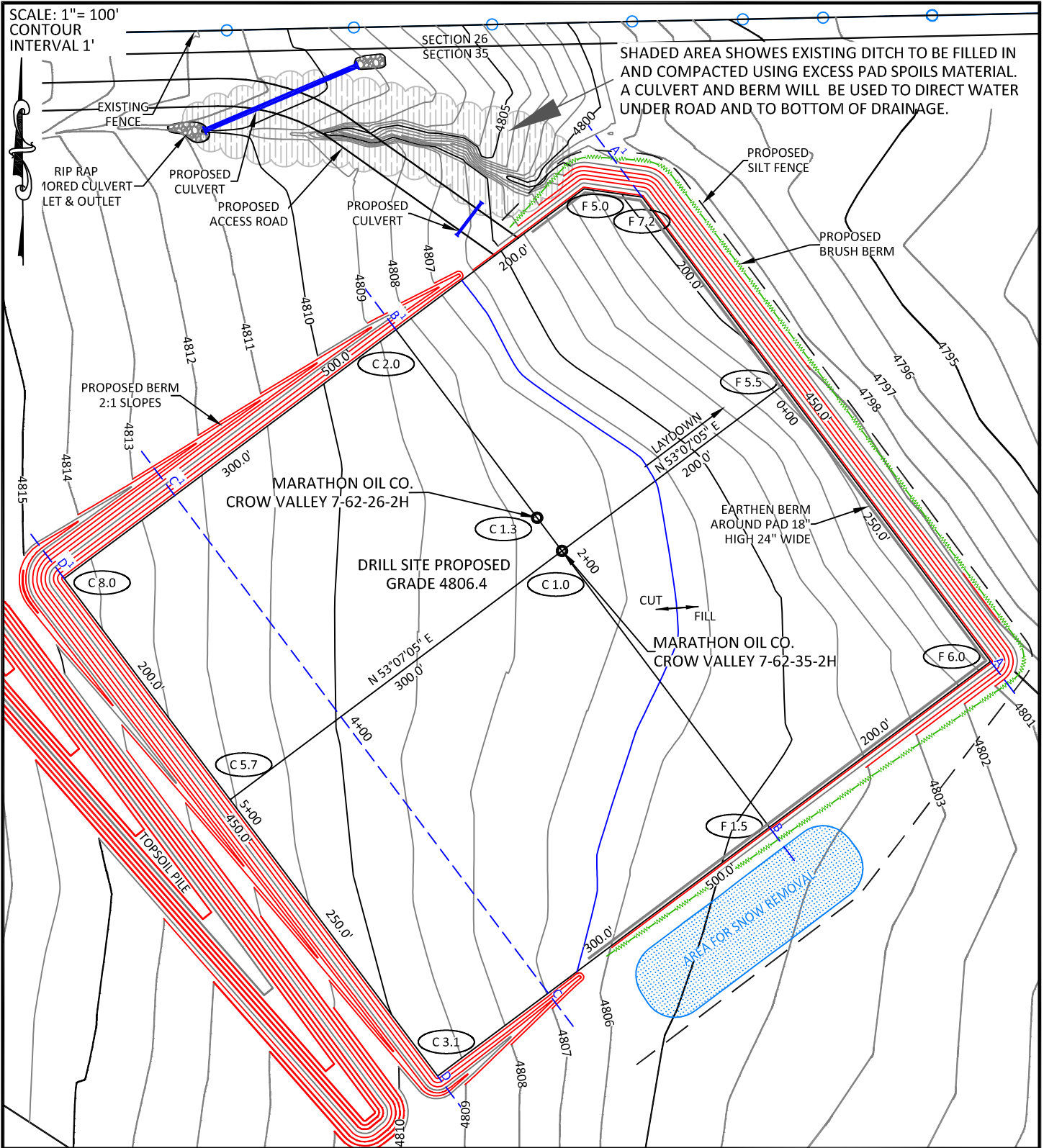
CROW VALLEY
 7-62-35-2H &
 7-62-26-2H
 WITHIN THE NE1/4
 NW1/4 SECTION 35,
 T 7 N, R 62 W,
 6TH PM.
 WELD COUNTY,
 COLORADO

MARATHON OIL COMPANY
 PO BOX 3128, HOUSTON TX, 77253
 5555 SAN FELIPE, HOUSTON TX, 77056

PRODUCTION FACILITIES

SCALE: 1"=80'	EXHIBIT "L"
DATE: 11/28/2011	SHEET 11 OF 15

SCALE: 1" = 100'
CONTOUR
INTERVAL 1'



CONFIDENTIALITY NOTES:

The information contained in this plat is legally privileged and confidential information intended only for the use of the recipients. If you are not the intended recipients, you are hereby notified that any use, dissemination, distribution or copying of this information is strictly prohibited.

WILLIAM H. SMITH & ASSOCIATES P.C.
SURVEYING CONSULTANTS
550 EAST SECOND NORTH PHONE: 307-875-3638
GREEN RIVER, WY 307-875-3639
www.whsmithpc.com

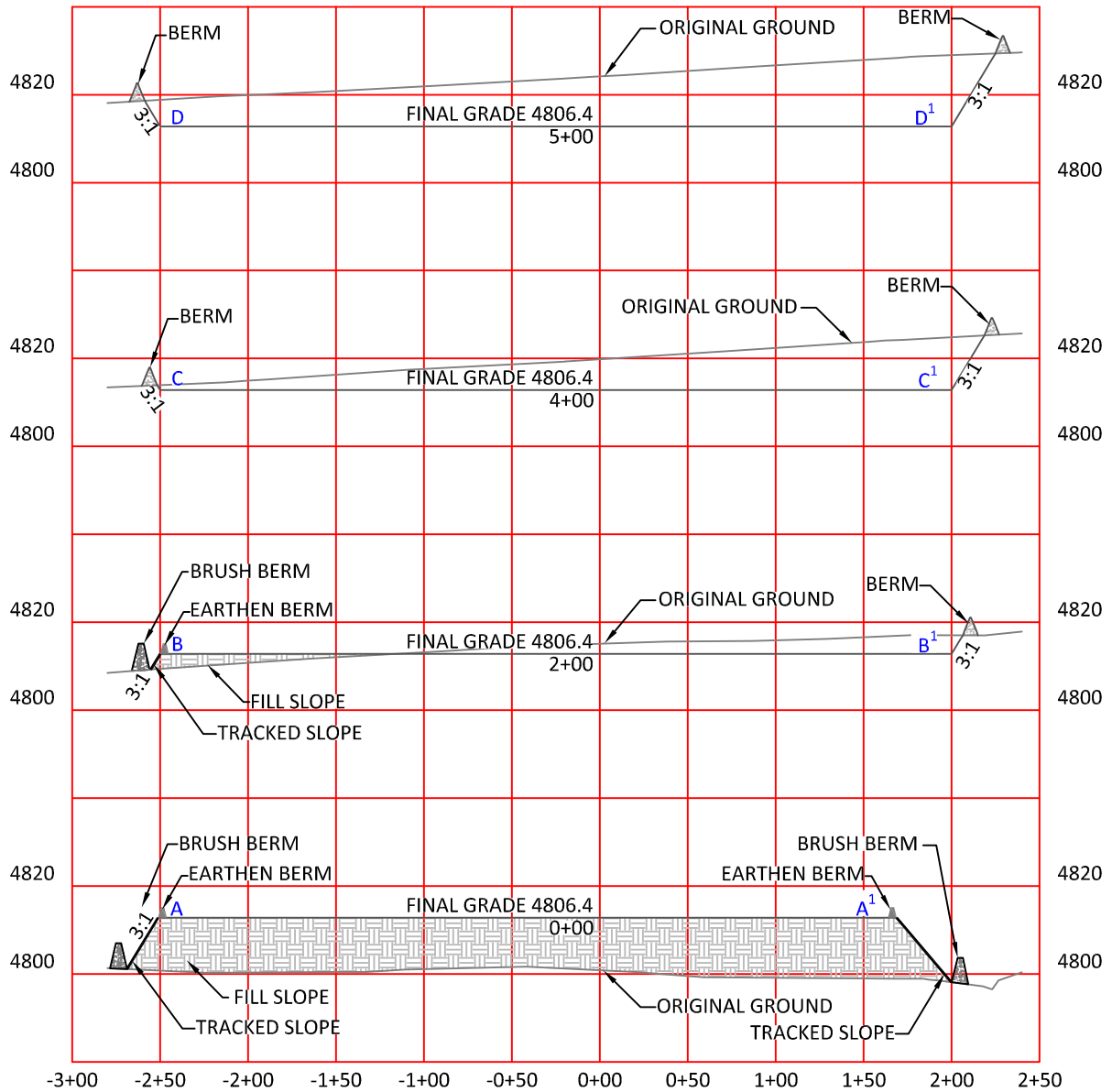
DRAWN BY: BW	CHECKED BY: RAW
PROJECT NO: 762352H	JOB NO: 2011001
REVISIONS:	

LEGEND

SILT FENCE	— — — — —
EXISTING FENCE	—○—○—○—
BRUSH BERM	—w—w—w—w—w—

LOCATION:
CROW VALLEY
7-62-35-2H &
7-62-26-2H
WITHIN THE NE1/4
NW1/4 SECTION 35,
T 7 N, R 62 W,
6TH PM.
WELD COUNTY,
COLORADO

MARATHON OIL COMPANY PO BOX 3128, HOUSTON TX, 77253 5555 SAN FELIPE, HOUSTON TX, 77056	
STORM WATER PREVENTION PLAN	
SCALE: 1"=100'	EXHIBIT "M"
DATE: 11/28/2011	SHEET 12 OF 15

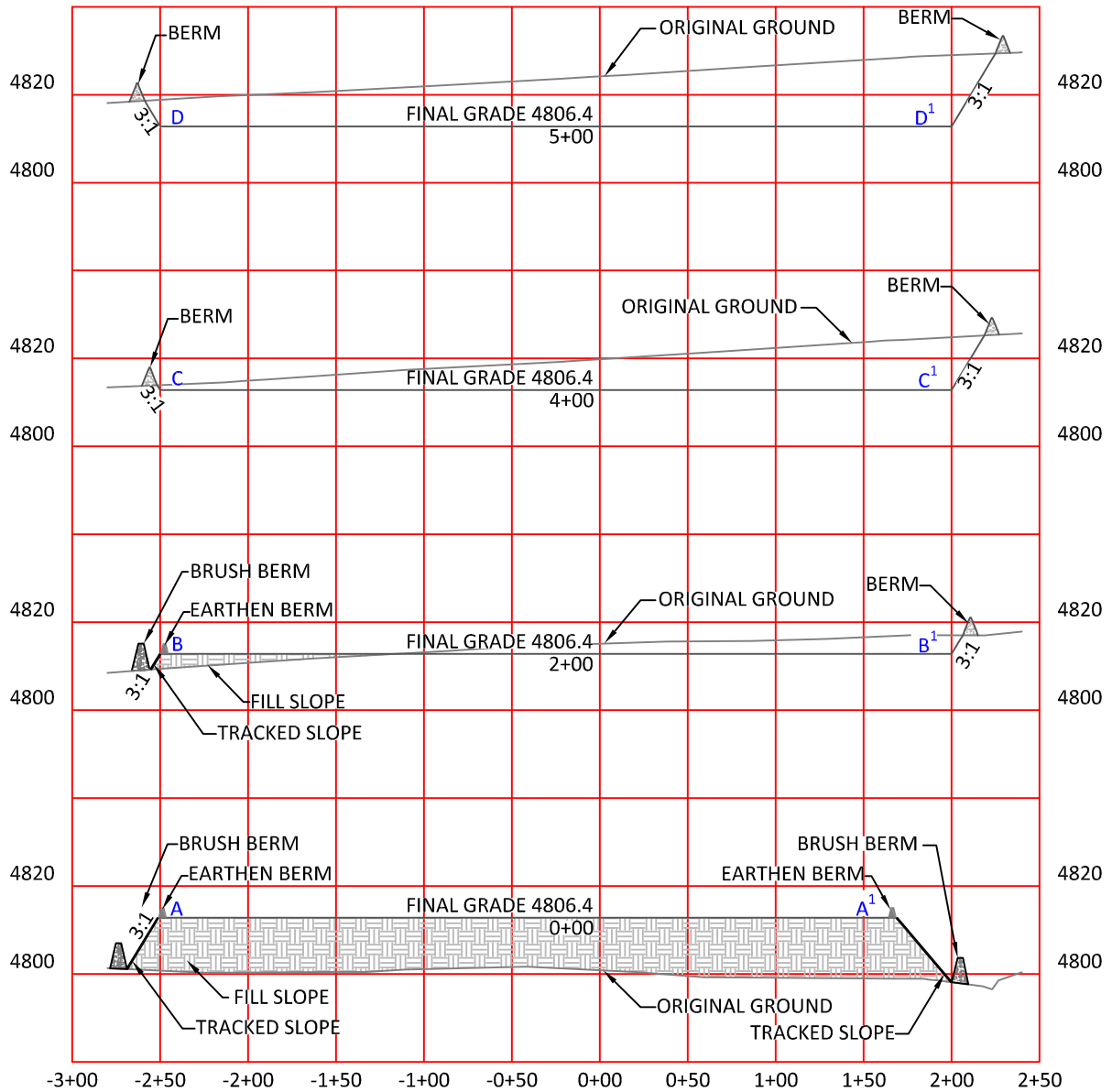


HORIZONTAL SCALE: 1"=100'
 VERTICAL SCALE: 1"=40'

CONFIDENTIALITY NOTES:

The information contained in this plat is legally privileged and confidential information intended only for the use of the recipients. If you are not the intended recipients, you are hereby notified that any use, dissemination, distribution or copying of this information is strictly prohibited.

		LEGEND SILT FENCE — — — — — EXISTING FENCE — — — — — BRUSH BERM — — — — —		LOCATION: CROW VALLEY 7-62-35-2H & 7-62-26-2H WITHIN THE NE1/4 NW1/4 SECTION 35, T 7 N, R 62 W, 6TH PM. WELD COUNTY, COLORADO	MARATHON OIL COMPANY PO BOX 3128, HOUSTON TX, 77253 5555 SAN FELIPE, HOUSTON TX, 77056 STORM WATER PREVENTION CROSS SECTIONS
		DRAWN BY: BW CHECKED BY: RAW PROJECT NO: 762352H JOB NO: 2011001 REVISIONS:			



HORIZONTAL SCALE: 1"=100'
 VERTICAL SCALE: 1"=40'

CONFIDENTIALITY NOTES:

The information contained in this plat is legally privileged and confidential information intended only for the use of the recipients. If you are not the intended recipients, you are hereby notified that any use, dissemination, distribution or copying of this information is strictly prohibited.



**WILLIAM H. SMITH
& ASSOCIATES P.C.**

SURVEYING CONSULTANTS
 550 EAST SECOND NORTH PHONE: 307-875-3638
 GREEN RIVER, WY 307-875-3639
 www.whsmithpc.com

DRAWN BY: BW

CHECKED BY: RAW

PROJECT NO: 762352H

JOB NO: 2011001

REVISIONS:

LEGEND

SILT FENCE — — — — —

EXISTING FENCE — — — — —

BRUSH BERM — — — — —

LOCATION:

CROW VALLEY
 7-62-35-2H &
 7-62-26-2H
 WITHIN THE NE1/4
 NW1/4 SECTION 35,
 T 7 N, R 62 W,
 6TH PM.
 WELD COUNTY,
 COLORADO

MARATHON OIL COMPANY
 PO BOX 3128, HOUSTON TX, 77253
 5555 SAN FELIPE, HOUSTON TX, 77056

**STORM WATER PREVENTION
 CROSS SECTIONS**

SCALE: NOTED

EXHIBIT "N"

DATE: 11/28/2011

SHEET 13 OF 15