

CONFIDENTIALITY NOTES:
 The information contained in this plat is legally privileged and confidential information intended only for the use of the recipients. If you are not the intended recipients, you are hereby notified that any use, dissemination, distribution or copying of this information is strictly prohibited.

WILLIAM H. SMITH & ASSOCIATES P.C.
 SURVEYING CONSULTANTS
 550 EAST SECOND NORTH PHONE: 307-875-3638
 GREEN RIVER, WY 307-875-3639
 www.whsmithpc.com

LEGEND	
PROPOSED ACCESS	
EXISTING 2-TRACK	
EXISTING ROAD	
1/16TH LINE	
1/4 LINE	
SECTION LINE	

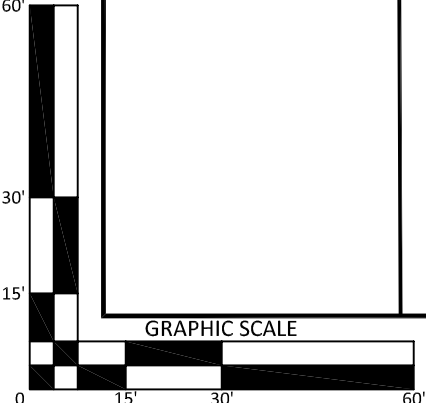
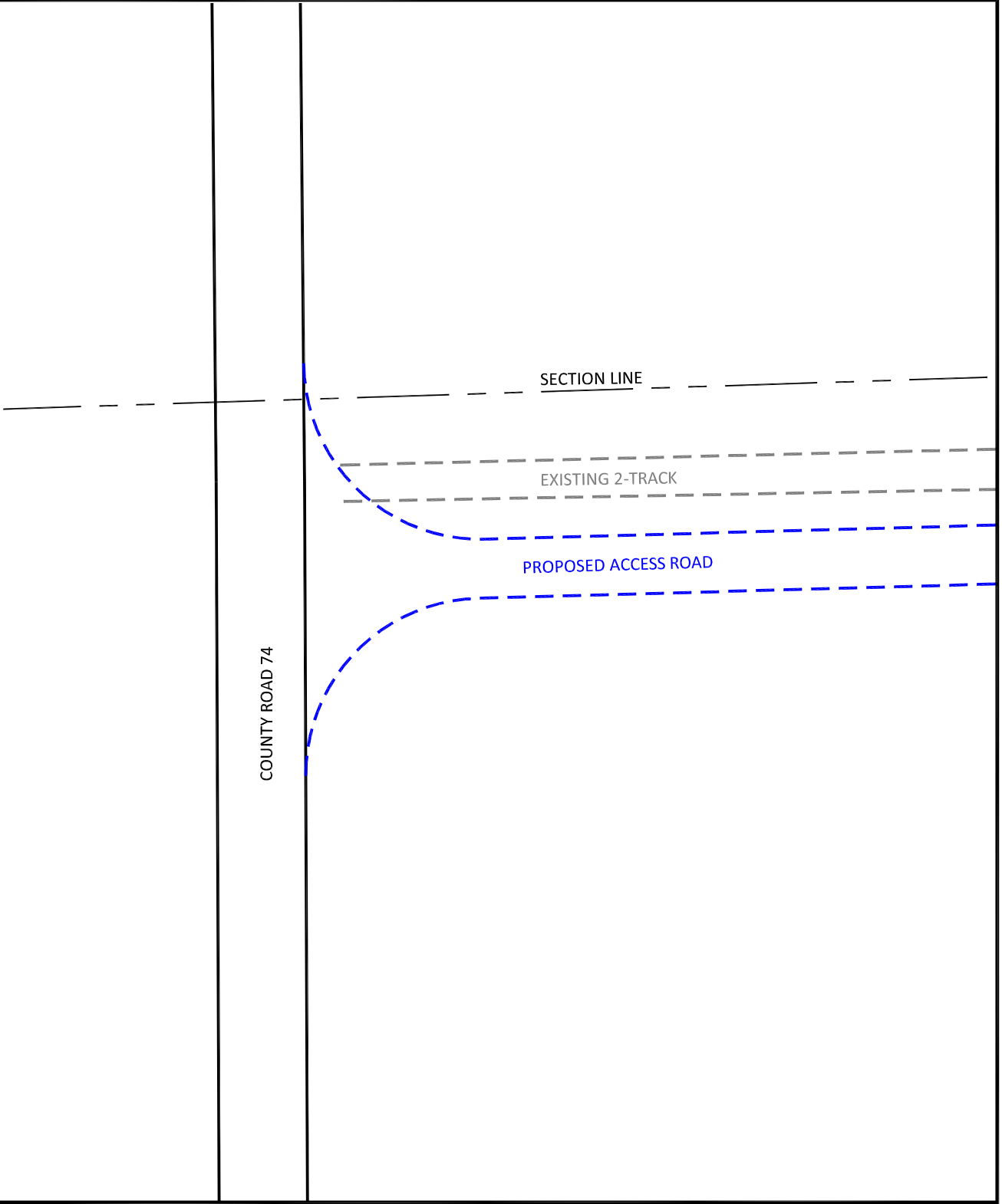
LOCATION:
 CROW VALLEY
 7-62-35-2H &
 7-62-26-2H
 WITHIN THE NE1/4
 NW1/4 SECTION 35,
 T 7 N, R 62 W,
 6TH PM.
 WELD COUNTY,
 COLORADO

MARATHON OIL COMPANY
 PO BOX 3128, HOUSTON TX, 77253
 5555 SAN FELIPE, HOUSTON TX, 77056

ACCESS ROAD MAP

SCALE: 1"=2000'	EXHIBIT "E"
DATE: 11/28/2011	SHEET 4 of 15

DRAWN BY: BW	CHECKED BY: RAW
PROJECT NO: 762352H	JOB NO: 2011001
REVISIONS:	



CONFIDENTIALITY NOTES:
 The information contained in this plat is legally privileged and confidential information intended only for the use of the recipients. If you are not the intended recipients, you are hereby notified that any use, dissemination, distribution or copying of this information is strictly prohibited.



WILLIAM H. SMITH & ASSOCIATES P.C.
 SURVEYING CONSULTANTS
 550 EAST SECOND NORTH PHONE: 307-875-3638
 GREEN RIVER, WY 307-875-3639
 www.whsmithpc.com

LEGEND	
ACCESS ROAD	== == == ==
EXISTING ROAD	====
EXISTING 2-TRACK	== == == ==

LOCATION:
 CROW VALLEY
 7-62-35-2H &
 7-62-26-2H
 WITHIN THE NE1/4
 NW1/4 SECTION 35,
 T 7 N, R 62 W,
 6TH PM.
 WELD COUNTY,
 COLORADO

MARATHON OIL COMPANY PO BOX 3128, HOUSTON TX, 77253 5555 SAN FELIPE, HOUSTON TX, 77056	
ACCESS ROAD ENTRANCE	
SCALE: 1"=50'	EXHIBIT "A"
DATE: 11/28/2011	SHEET 1 OF 1

DRAWN BY: BW	CHECKED BY: RAW
PROJECT NO: 762352H	JOB NO: 2011001
REVISIONS:	