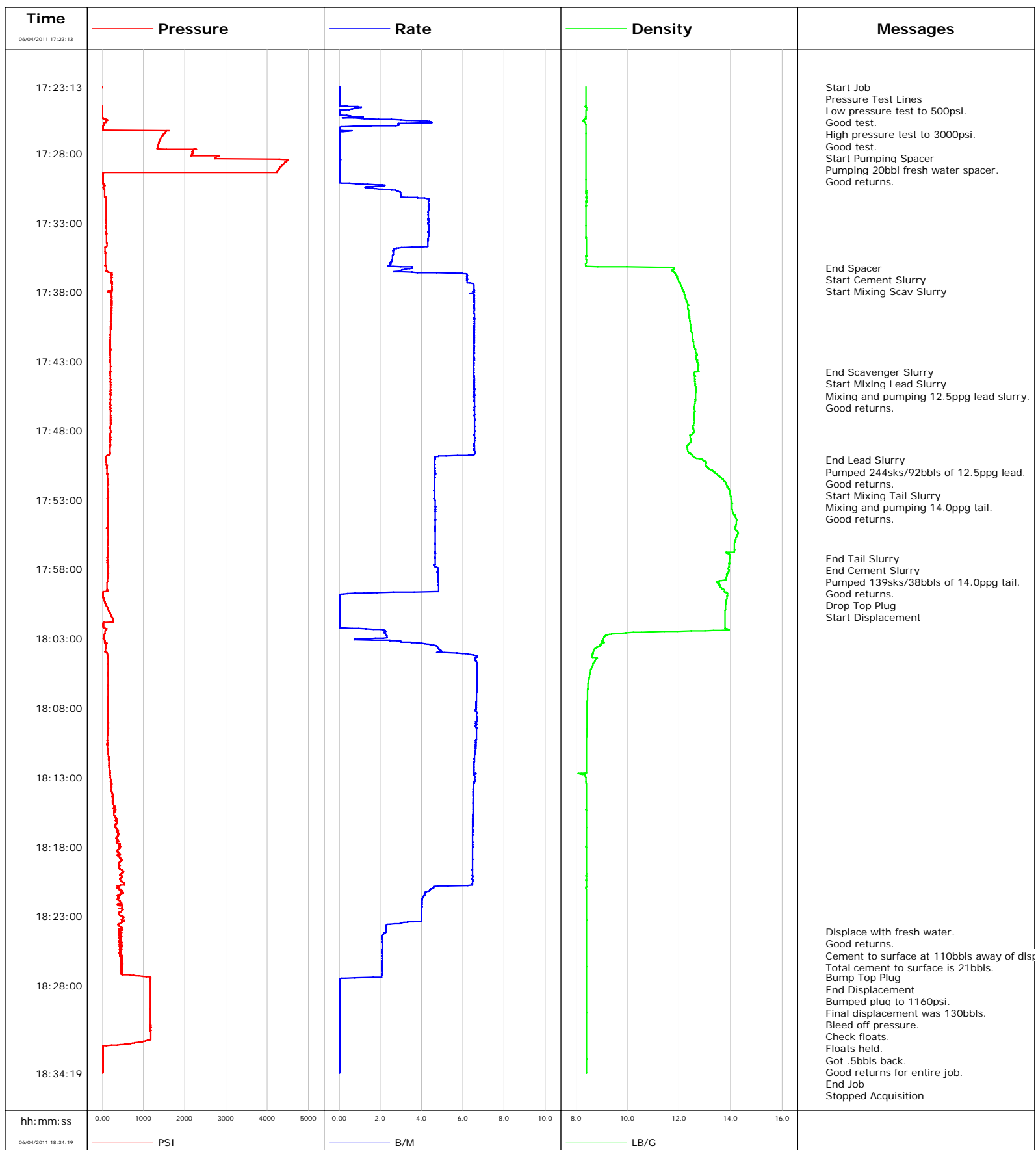


Well WF04B-25 H26 596
Field N. PARACHUTE
Engineer JEFF PATTERSON
Country United States

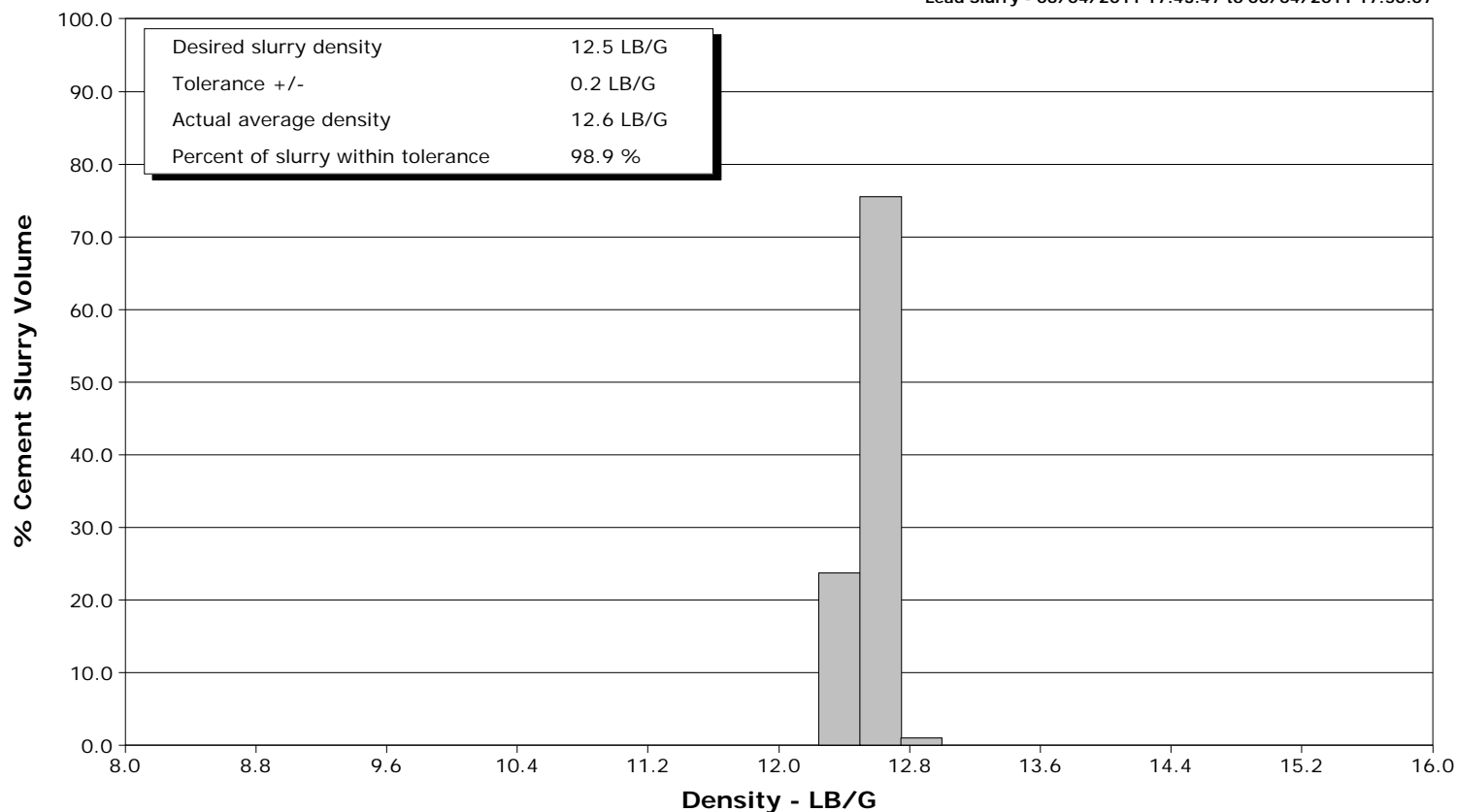
Client ENCANA
SIR No. BRWT-00070
Job Type 9 5/8" SURFACE
Job Date 06-04-2011



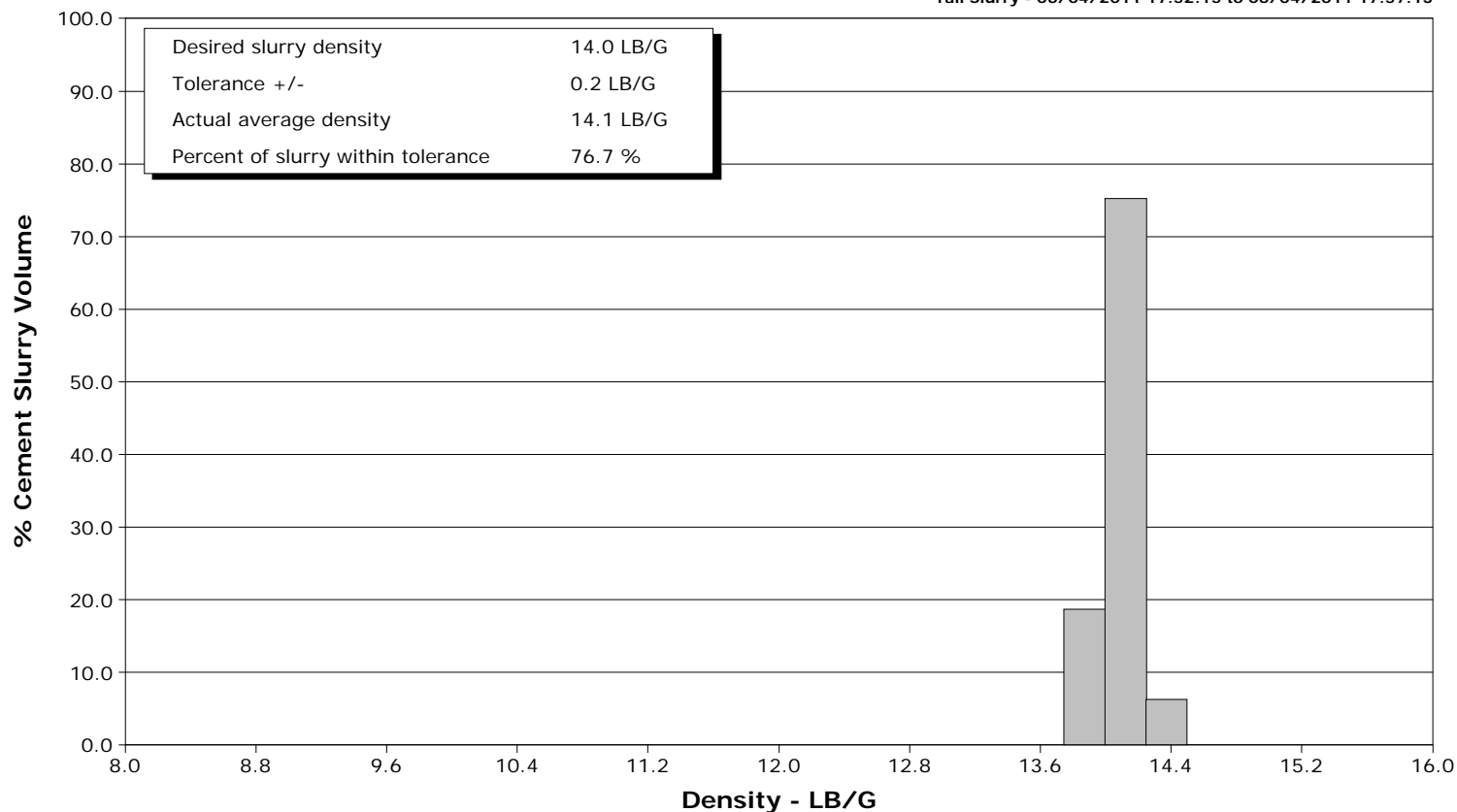
Well WF04B-25 H26 596
Field N. PARACHUTE
Engineer JEFF PATTERSON
Country United States

Client ENCANA
SIR No. BRWT-00070
Job Type 9 5/8" SURFACE
Job Date 06-04-2011

Lead Slurry - 06/04/2011 17:43:47 to 06/04/2011 17:50:07



Tail Slurry - 06/04/2011 17:52:15 to 06/04/2011 17:57:13





Cementing Service Report

				Customer ENCANA		Job Number BRWT-00070		
Well WF04B-25 H26 596 WF04B-25 H26 596			Location (legal) H26		Schlumberger Location GRAND JUNCTION,COLORADO		Job Start Jun/04/2011	
Field N. PARACHUTE		Formation Name/Type SHALE		Deviation 0 deg	Bit Size 12.3 in	Well MD 1741.0 ft		Well TVD 1741.0 ft
County GARFIELD		State/Province Colorado		BHP	BHST 100 degF	BHCT 87 degF	Pore Press. Gradient	
Well Master 0631280600		API/UWI						
Rig Name PATTERSON 303	Drilled For Gas	Service Via Land	Casing/Liner					
			Depth, ft	Size, in	Weight, lb/ft	Grade	Thread	
Offshore Zone	Well Class New	Well Type Development	1741.0	9.630	36.0	J55	8RD	
			0.0	0.000	0.0			
Drilling Fluid Type		Max. Density	Plastic Viscosity	Tubing/Drill Pipe				
				Depth,	Size,	Weight,	Grade	Thread
Service Line Cementing	Job Type 9 5/8" SURFACE							
Max. Allowed Tub. Press 3000 psi	Max. Allowed Ann. Press	WH Connection 9 5/8" CEMENT HEAD	Perforations/Open Hole					
			Top,	Bottom,		No. of Shots	Total Interval	
							Diameter	
			Treat Down Casing	Displacement 131.0 bbl	Packer Type	Packer Depth		
			Tubing Vol.	Casing Vol. 134.0 bbl	Annular Vol. 107.0 bbl	Openhole Vol. 251.0 bbl		
Casing/Tubing Secured <input checked="" type="checkbox"/>		1 Hole Vol. Circulated prior to Cement <input checked="" type="checkbox"/>		Casing Tools		Squeeze Job		
Lift Pressure 861 psi				Shoe Type Guide		Squeeze Type		
Pipe Rotated <input type="checkbox"/>		Pipe Reciprocated <input type="checkbox"/>		Shoe Depth 1741.0 ft		Tool Type		
No. Centralizers		Top Plugs 1	Bottom Plugs	Stage Tool Type		Tool Depth		
Cement Head Type Single			Stage Tool Depth		Tail Pipe Size			
Job Scheduled For Jun/04/2011		Arrived on Location Jun/04/2011	Leave Location Jun/04/2011	Collar Type Float		Tail Pipe Depth		
				Collar Depth 1699.0 ft		Sqz. Total Vol.		
Date	Time 24-hr clock	Treating Pressure PSI	Flow Rate B/M	Density LB/G	Volume BBL	Message		
06/04/2011	17:06:25					Started Acquisition		
06/04/2011	17:23:13					Start Job		
06/04/2011	17:23:13	-10	0.0	8.39	0.0			
06/04/2011	17:23:15					Pressure Test Lines		
06/04/2011	17:23:15	-10	0.0	8.39	0.0			
06/04/2011	17:23:16					Low pressure test to 500psi.		
06/04/2011	17:23:16	-10	0.0	8.39	0.0			
06/04/2011	17:23:17					Good test.		
06/04/2011	17:23:17					High pressure test to 3000psi.		
06/04/2011	17:23:17					Good test.		
06/04/2011	17:23:17	-10	0.0	8.39	0.0			
06/04/2011	17:23:19					Start Pumping Spacer		
06/04/2011	17:23:19	-13	0.0	8.39	0.0			
06/04/2011	17:23:20					Pumping 20bbl fresh water spacer.		
06/04/2011	17:23:20					Good returns.		
06/04/2011	17:23:20	-13	0.0	8.39	0.0			
06/04/2011	17:24:45	-8	0.9	8.41	0.2			
06/04/2011	17:26:25	1547	0.4	8.40	2.2			
06/04/2011	17:28:05	2177	0.0	8.40	2.2			
06/04/2011	17:29:45	4	0.0	8.40	2.3			
06/04/2011	17:31:25	86	4.3	8.40	5.6			

Well WF04B-25 H26 596 WF04B-25 H26 596			Field N. PARACHUTE	Job Start Jun/04/2011	Customer ENCANA	Job Number BRWT-00070
Date	Time 24-hr clock	Treating Pressure PSI	Flow Rate B/M	Density LB/G	Volume BBL	Message
06/04/2011	17:34:45	83	4.2	8.40	20.0	
06/04/2011	17:36:17					End Spacer
06/04/2011	17:36:17	97	3.5	11.78	24.1	
06/04/2011	17:36:19					Start Cement Slurry
06/04/2011	17:36:19					Start Mixing Scav Slurry
06/04/2011	17:36:19	96	3.5	11.81	24.2	
06/04/2011	17:36:25	100	3.1	11.74	24.6	
06/04/2011	17:38:05	216	6.5	12.19	34.4	
06/04/2011	17:39:45	210	6.5	12.40	45.3	
06/04/2011	17:41:25	195	6.5	12.53	56.2	
06/04/2011	17:43:05	188	6.5	12.70	67.1	
06/04/2011	17:43:46					End Scavenger Slurry
06/04/2011	17:43:46	204	6.5	12.70	71.6	
06/04/2011	17:43:47					Start Mixing Lead Slurry
06/04/2011	17:43:47	193	6.5	12.62	71.7	
06/04/2011	17:43:48					Mixing and pumping 12.5ppg lead slurry.
06/04/2011	17:43:48	188	6.5	12.58	71.8	
06/04/2011	17:43:49					Good returns.
06/04/2011	17:43:49	189	6.5	12.58	71.9	
06/04/2011	17:44:45	200	6.5	12.62	78.0	
06/04/2011	17:46:25	198	6.6	12.58	88.9	
06/04/2011	17:48:05	203	6.6	12.60	99.9	
06/04/2011	17:49:45	168	6.6	12.50	110.8	
06/04/2011	17:50:07					End Lead Slurry
06/04/2011	17:50:07	82	4.6	12.90	112.6	
06/04/2011	17:50:09					Pumped 244sks/92bbbls of 12.5ppg lead.
06/04/2011	17:50:09					Good returns.
06/04/2011	17:50:09	88	4.6	12.94	112.8	
06/04/2011	17:51:25	129	4.6	13.63	118.7	
06/04/2011	17:52:15					Start Mixing Tail Slurry
06/04/2011	17:52:15	125	4.6	13.94	122.5	
06/04/2011	17:52:16					Mixing and pumping 14.0ppg tail.
06/04/2011	17:52:16					Good returns.
06/04/2011	17:52:16	129	4.6	13.95	122.6	
06/04/2011	17:53:05	132	4.7	14.03	126.4	
06/04/2011	17:54:45	129	4.7	14.21	134.1	
06/04/2011	17:56:25	128	4.7	14.14	141.9	
06/04/2011	17:57:13					End Tail Slurry
06/04/2011	17:57:13	123	4.6	13.96	145.6	
06/04/2011	17:57:15					End Cement Slurry
06/04/2011	17:57:15	131	4.7	13.96	145.7	
06/04/2011	17:57:16					Pumped 139sks/38bbbls of 14.0ppg tail.
06/04/2011	17:57:16					Good returns.
06/04/2011	17:57:16	131	4.7	13.96	145.8	
06/04/2011	17:57:20					Drop Top Plug
06/04/2011	17:57:20					Start Displacement
06/04/2011	17:57:20	116	4.7	13.95	146.1	
06/04/2011	17:58:05	131	4.8	13.93	149.7	
06/04/2011	17:59:45	2	0.4	13.87	157.3	
06/04/2011	18:01:25	223	0.0	13.78	157.4	
06/04/2011	18:03:05	31	0.8	9.06	159.0	
06/04/2011	18:04:45	139	6.7	8.69	167.7	
06/04/2011	18:06:25	133	6.7	8.47	178.8	
06/04/2011	18:08:05	130	6.6	8.43	189.9	

Well WF04B-25 H26 596 WF04B-25 H26 596			Field N. PARACHUTE		Job Start Jun/04/2011	Customer ENCANA		Job Number BRWT-00070	
Date	Time 24-hr clock	Treating Pressure PSI	Flow Rate B/M	Density LB/G	Volume BBL	Message			
06/04/2011	18:11:25	146	6.6	8.41	212.0				
06/04/2011	18:13:05	194	6.6	8.38	222.9				
06/04/2011	18:14:45	251	6.5	8.40	233.8				
06/04/2011	18:16:25	330	6.5	8.40	244.6				
06/04/2011	18:18:05	430	6.5	8.40	255.4				
06/04/2011	18:19:45	490	6.5	8.40	266.1				
06/04/2011	18:21:25	431	4.1	8.40	275.7				
06/04/2011	18:23:05	515	4.0	8.40	282.4				
06/04/2011	18:24:08					Displace with fresh water.			
06/04/2011	18:24:08	386	2.3	8.40	285.5				
06/04/2011	18:24:11					Good returns.			
06/04/2011	18:24:11	412	2.3	8.40	285.6				
06/04/2011	18:24:30					Cement to surface at 110bbls away of displacement.			
06/04/2011	18:24:30	432	2.1	8.40	286.3				
06/04/2011	18:24:45	421	2.1	8.40	286.8				
06/04/2011	18:24:55					Total cement to surface is 21bbls.			
06/04/2011	18:24:55	469	2.1	8.40	287.1				
06/04/2011	18:26:25	434	2.1	8.40	290.2				
06/04/2011	18:27:25					Bump Top Plug			
06/04/2011	18:27:25					End Displacement			
06/04/2011	18:27:25	1175	2.1	8.40	292.3				
06/04/2011	18:27:28					Bumped plug to 1160psi.			
06/04/2011	18:27:28					Final displacement was 130bbls.			
06/04/2011	18:27:28					Bleed off pressure.			
06/04/2011	18:27:28					Check floats.			
06/04/2011	18:27:28	1168	0.7	8.40	292.4				
06/04/2011	18:27:29					Floats held.			
06/04/2011	18:27:29					Got .5bbls back.			
06/04/2011	18:27:29					Good returns for entire job.			
06/04/2011	18:27:29	1170	0.3	8.40	292.4				
06/04/2011	18:28:05	1162	0.0	8.40	292.4				
06/04/2011	18:29:45	1165	0.0	8.41	292.4				
06/04/2011	18:31:25	1167	0.0	8.41	292.4				
06/04/2011	18:33:05	7	0.0	8.41	292.5				
06/04/2011	18:33:12					End Job			
06/04/2011	18:33:12	7	0.0	8.41	292.5				

Post Job Summary

Average Pump Rates, bbl/min					Volume of Fluid Injected, bbl				
Slurry 6.0	N2	Mud	Maximum Rate 6.0		Total Slurry 130.0	Mud	Spacer 20.0	N2	
Treating Pressure Summary, psi					Breakdown Fluid				
Maximum 3000	Final 1160	Average 200	Bump Plug to 1160	Breakdown	Type	Volume		Density	
Avg. N2 Percent		Designed Slurry Volume 130.0 bbl		Displacement 131.0 bbl	Mix Water Temp 65 degF	Cement Circulated to Surface? <input checked="" type="checkbox"/>		Volume 21.0 bbl	
						Washed Thru Perfs <input type="checkbox"/>		To	
Customer or Authorized Representative FLOYD ROBERTS			Schlumberger Supervisor JEFF PATTERSON			Circulation Lost <input type="checkbox"/>		Job Completed <input checked="" type="checkbox"/>	
						-		-	