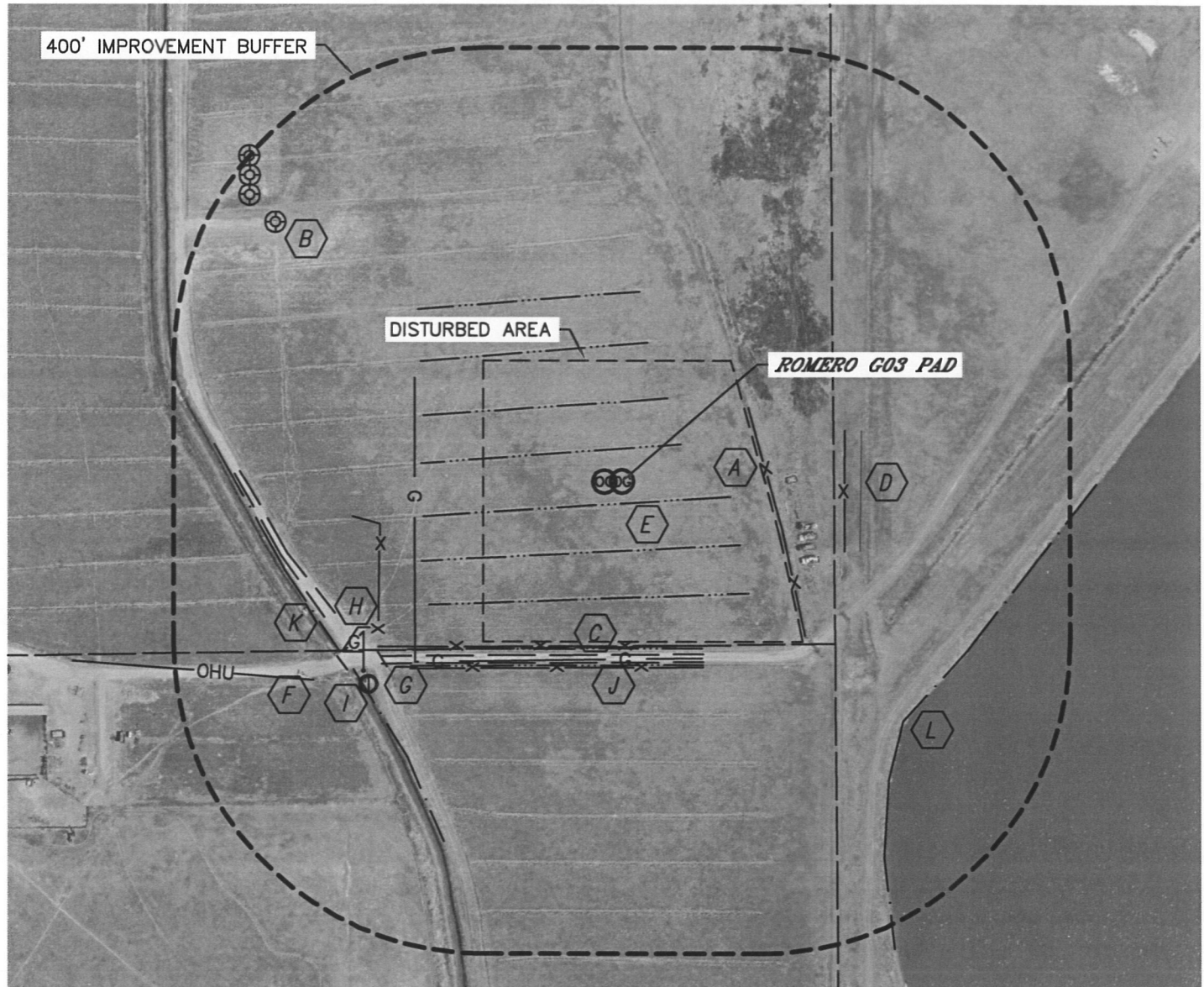


## LOCATION DRAWING

ROMERO G03-19D, 20D

SECTION: 3  
TOWNSHIP: 4N  
RANGE: 65W



### IMPROVEMENTS:

(MEASURED FROM THE PROPOSED ROMERO G03-19D WELL LOCATION)

- |   |   |
|---|---|
| <b>A</b> FENCE 183' NE, 289' E, 211' & 239' S, 318' W                 | <b>G</b> CULVERT 384' SW, 431' SW       |
| <b>B</b> EX. O&G WELL 558', 606', 621', 637' NW                       | <b>H</b> GAS MARKER 413' SW             |
| <b>C</b> ACCESS ROAD 227' S, 408' SW                                  | <b>I</b> IRRIGATION WELL 419' SW        |
| <b>D</b> WETLANDS 309' E  | <b>J</b> GAS LINE 268' W, 228' S        |
| <b>E</b> DITCH 42', 102', 175' & 242' N, 28', 89', 150' 214' & 236' S | <b>K</b> CANAL 422' SW                  |
| <b>F</b> OVERHEAD UTILITY 474' SW                                     | <b>L</b> LOWER LATHAM RESERVOIR 477' SE |

NEAREST: BUILDING 860' SW, PUBLIC ROAD (CR 43) 1072' W,  
ABOVE GROUND UTILITY 474' W, RAILROAD 5280'+, PROPERTY LINE 275' E

