

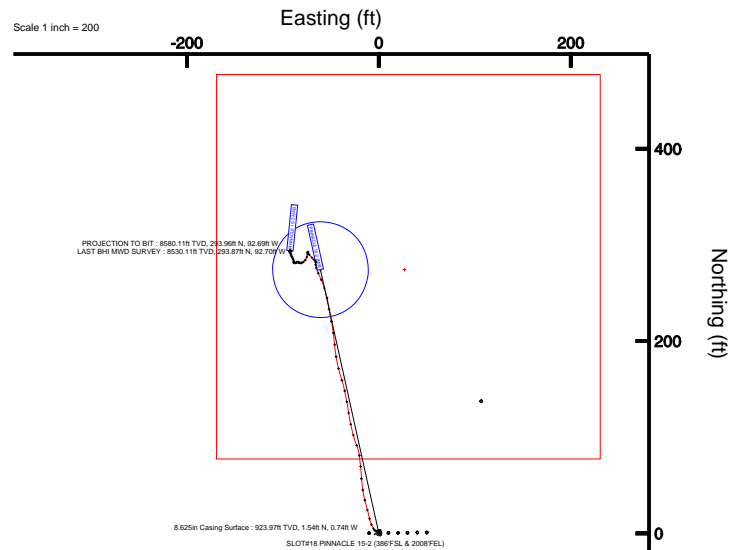
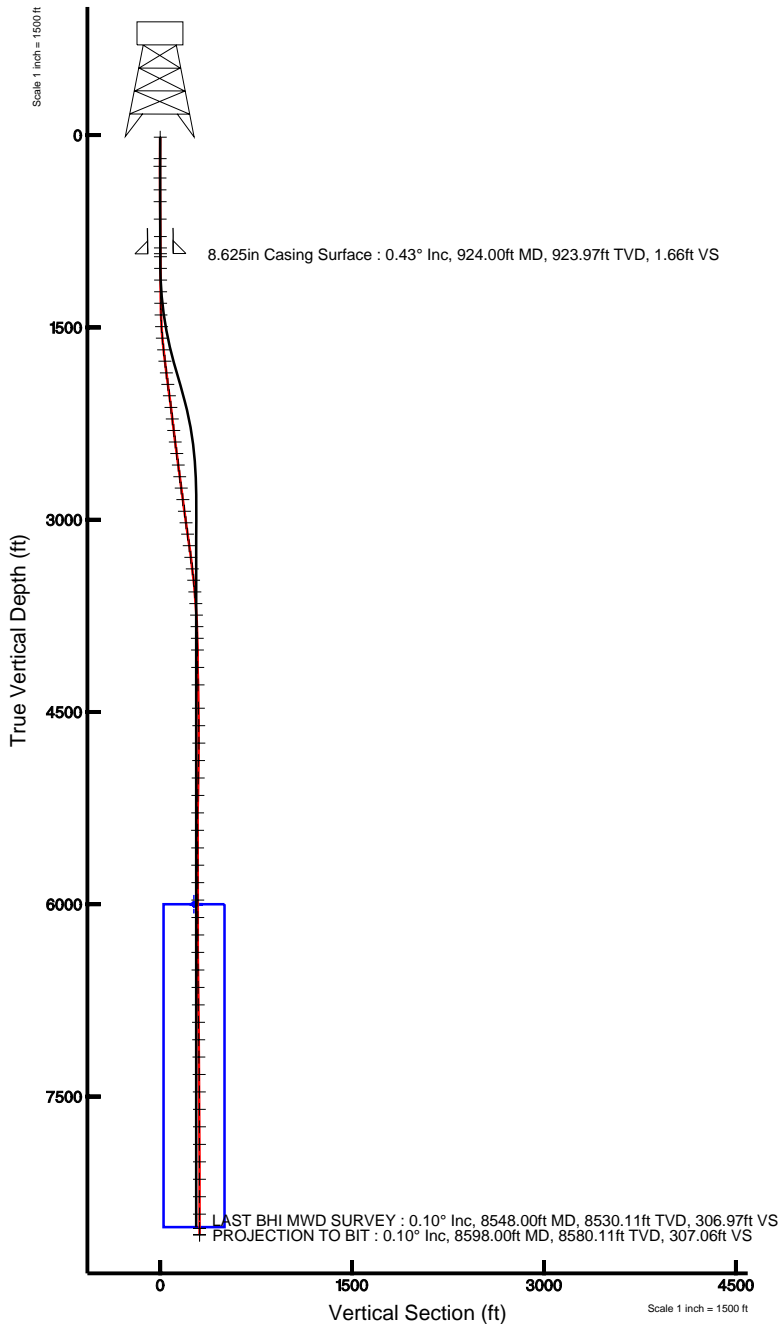


# KERR MCGEE OIL & GAS ONSHORE LP

Location: COLORADO Slot: SLOT#18 PINNACLE 15-2 (386°FSL & 2008°FEL)  
Field: WELD COUNTY (KERR MCGEE) Well: PINNACLE 15-2  
Facility: SEC.02-T1N-R68W Wellbore: PINNACLE 15-2 PWB



Plot reference wellpath is PINNACLE 15-2 (REV-A-0) PWB	
True vertical depths are referenced to XTREME 12 (RKB)	Grid System: NAD83 / Lambert Colorado State Planes, Northern Zone (501), US feet
Measured depths are referenced to XTREME 12 (RKB)	North Reference: True north
XTREME 12 (RKB) to Mean Sea Level: 5020 feet	Scale: True distance
Mean Sea Level to Mud line (Facility: SEC.02-T1N-R68W): 0 feet	Depths are in feet
Coordinates are in feet referenced to Slot	Created by: cookdarm on 6/8/2011



BGGM (1945.0 to 2012.0) Dip: 66.77° Field: 52979 nT  
Magnetic North is 8.94 degrees East of True North (at 3/25/2011)

To correct azimuth from Magnetic to True add 8.94 degrees  
For example: if the Magnetic North Azimuth = 90 degs, then the Grid North Azimuth = 90 + 8.94 = 98.94

Azimuth 347.49° with reference 0.00 N, 0.00 E



# Actual Wellpath Report

PINNACLE 15-2 AWP

Page 1 of 5



INTEQ

## REFERENCE WELLPATH IDENTIFICATION

Operator	KERR MCGEE OIL & GAS ONSHORE LP	Slot	SLOT#18 PINNACLE 15-2 (386'FSL & 2008'FEL)
Area	COLORADO	Well	PINNACLE 15-2
Field	WELD COUNTY (KERR MCGEE)	Wellbore	PINNACLE 15-2 AWB
Facility	SEC.02-T1N-R68W		

## REPORT SETUP INFORMATION

Projection System	NAD83 / Lambert Colorado State Planes, Northern Zone (501), US feet	Software System	WellArchitect® 2.0
North Reference	True	User	Cookdanm
Scale	0.999962	Report Generated	6/8/2011 at 1:23:06 PM
Convergence at slot	0.34° East	Database/Source file	WA_DENVER/PINNACLE_15-2_AWB.xml

## WELLPATH LOCATION

	Local coordinates		Grid coordinates		Geographic coordinates	
	North[ft]	East[ft]	Easting[USft]	Northing[USft]	Latitude	Longitude
Slot Location	-872.06	1614.79	3148792.54	1270309.75	40°04'26.998"N	104°58'05.909"W
Facility Reference Pt			3147172.67	1271172.18	40°04'35.616"N	104°58'26.681"W
Field Reference Pt			3197771.84	1268891.29	40°04'09.600"N	104°47'36.000"W

## WELLPATH DATUM

Calculation method	Minimum curvature	XTREME 12 (RKB) to Facility Vertical Datum	5020.00ft
Horizontal Reference Pt	Slot	XTREME 12 (RKB) to Mean Sea Level	5020.00ft
Vertical Reference Pt	XTREME 12 (RKB)	Facility Vertical Datum to Mud Line (Facility)	0.00ft
MD Reference Pt	XTREME 12 (RKB)	Section Origin	N 0.00, E 0.00 ft
Field Vertical Reference	Mean Sea Level	Section Azimuth	347.49°



# Actual Wellpath Report

PINNACLE 15-2 AWP

Page 2 of 5



INTEQ

## REFERENCE WELLPATH IDENTIFICATION

Operator	KERR MCGEE OIL & GAS ONSHORE LP	Slot	SLOT#18 PINNACLE 15-2 (386'FSL & 2008'FEL)
Area	COLORADO	Well	PINNACLE 15-2
Field	WELD COUNTY (KERR MCGEE)	Wellbore	PINNACLE 15-2 AWB
Facility	SEC.02-T1N-R68W		

## WELLPATH DATA (79 stations) † = interpolated/extrapolated station

MD [ft]	Inclination [°]	Azimuth [°]	TVD [ft]	Vert Sect [ft]	North [ft]	East [ft]	DLS [°/100ft]	Comments
0.00†	0.000	139.100	0.00	0.00	0.00	0.00	0.00	
15.00	0.000	139.100	15.00	0.00	0.00	0.00	0.00	
182.00	1.000	139.100	181.99	-1.28	-1.10	0.95	0.60	
242.00	0.600	128.200	241.99	-1.99	-1.69	1.54	0.71	
334.00	0.300	302.800	333.98	-2.19	-1.86	1.72	0.98	
426.00	0.500	315.400	425.98	-1.68	-1.44	1.24	0.24	
518.00	0.400	317.600	517.98	-1.06	-0.92	0.74	0.11	
654.00	0.300	346.200	653.98	-0.29	-0.22	0.33	0.15	
790.00	0.500	327.100	789.97	0.62	0.62	-0.08	0.17	
879.00	0.500	325.000	878.97	1.34	1.26	-0.51	0.02	
948.00	0.400	304.600	947.97	1.80	1.65	-0.88	0.27	
1039.00	0.600	282.100	1038.96	2.23	1.93	-1.61	0.30	
1130.00	0.400	291.600	1129.96	2.61	2.15	-2.37	0.24	
1221.00	0.600	294.400	1220.96	3.07	2.46	-3.10	0.22	
1311.00	0.700	282.500	1310.95	3.59	2.77	-4.06	0.19	
1402.00	2.400	332.400	1401.92	5.66	4.58	-5.49	2.22	
1493.00	3.500	333.500	1492.80	10.20	8.76	-7.61	1.21	
1584.00	4.900	348.600	1583.55	16.78	15.05	-9.62	1.95	
1675.00	6.700	343.300	1674.08	25.96	23.95	-11.91	2.06	
1765.00	7.000	348.600	1763.44	36.68	34.35	-14.51	0.78	
1856.00	6.700	348.200	1853.79	47.53	44.98	-16.69	0.33	
1947.00	8.300	357.000	1944.01	59.32	56.74	-18.12	2.16	
2037.00	7.900	355.300	2033.12	71.85	69.39	-18.96	0.52	
2128.00	6.800	351.400	2123.37	83.42	80.95	-20.28	1.33	
2219.00	6.900	338.400	2213.72	94.20	91.36	-23.10	1.70	
2310.00	7.300	345.400	2304.03	105.37	102.04	-26.57	1.05	
2400.00	7.600	347.200	2393.27	117.04	113.38	-29.33	0.42	
2491.00	7.600	352.100	2483.47	129.05	125.21	-31.49	0.71	
2582.00	7.300	349.300	2573.70	140.83	136.85	-33.39	0.52	
2673.00	7.300	348.600	2663.96	152.39	148.20	-35.61	0.10	
2763.00	7.500	342.300	2753.21	163.96	159.40	-38.52	0.93	
2854.00	8.200	345.100	2843.36	176.35	171.33	-42.00	0.88	
2945.00	8.000	351.700	2933.46	189.15	183.86	-44.58	1.04	
3036.00	7.700	354.200	3023.60	201.52	196.19	-46.11	0.50	
3126.00	8.000	353.200	3112.76	213.74	208.41	-47.46	0.37	
3217.00	7.700	347.900	3202.91	226.14	220.66	-49.49	0.86	
3308.00	8.100	350.700	3293.04	238.64	232.95	-51.80	0.61	
3399.00	7.200	348.200	3383.23	250.74	244.86	-54.00	1.05	
3489.00	6.300	341.600	3472.61	261.29	255.06	-56.72	1.32	
3580.00	5.300	337.000	3563.14	270.39	263.67	-59.93	1.21	
3671.00	4.300	334.500	3653.82	277.85	270.62	-63.05	1.12	
3762.00	3.100	342.600	3744.63	283.63	276.05	-65.25	1.44	
3852.00	1.600	1.900	3834.56	287.27	279.62	-65.94	1.86	
3943.00	1.500	4.800	3925.52	289.64	282.08	-65.79	0.14	
4034.00	0.500	290.600	4016.51	290.99	283.41	-66.07	1.59	



# Actual Wellpath Report

PINNACLE 15-2 AWP

Page 3 of 5



INTEQ

## REFERENCE WELLPATH IDENTIFICATION

Operator	KERR MCGEE OIL & GAS ONSHORE LP	Slot	SLOT#18 PINNACLE 15-2 (386'FSL & 2008'FEL)
Area	COLORADO	Well	PINNACLE 15-2
Field	WELD COUNTY (KERR MCGEE)	Wellbore	PINNACLE 15-2 AWB
Facility	SEC.02-T1N-R68W		

## WELLPATH DATA (79 stations)

MD [ft]	Inclination [°]	Azimuth [°]	TVD [ft]	Vert Sect [ft]	North [ft]	East [ft]	DLS [°/100ft]	Comments
4170.00	1.400	316.200	4152.49	292.73	284.82	-67.77	0.72	
4306.00	1.000	317.300	4288.46	295.18	286.89	-69.73	0.29	
4488.00	1.600	314.800	4470.41	298.69	289.85	-72.61	0.33	
4624.00	0.900	356.300	4606.38	301.34	292.25	-74.02	0.81	
4761.00	0.500	172.800	4743.38	301.81	292.73	-74.02	1.02	
4897.00	1.300	194.600	4879.36	299.85	290.65	-74.33	0.63	
5033.00	1.500	192.600	5015.32	296.86	287.42	-75.11	0.15	
5169.00	1.500	220.600	5151.27	294.18	284.33	-76.66	0.53	
5305.00	1.000	228.700	5287.24	292.54	282.19	-78.71	0.39	
5441.00	0.800	261.700	5423.23	292.04	281.27	-80.54	0.40	
5578.00	0.600	286.000	5560.22	292.45	281.33	-82.17	0.26	
5714.00	0.400	285.300	5696.21	293.02	281.66	-83.32	0.15	
5850.00	0.400	303.200	5832.21	293.58	282.04	-84.17	0.09	
5986.00	0.400	249.700	5968.20	293.85	282.14	-85.01	0.26	
6122.00	0.500	248.700	6104.20	293.70	281.76	-86.01	0.07	
6258.00	0.700	253.300	6240.19	293.55	281.30	-87.36	0.15	
6394.00	0.400	308.900	6376.19	293.86	281.36	-88.52	0.42	
6531.00	0.400	18.110	6513.18	294.64	282.12	-88.75	0.33	
6667.00	0.600	347.500	6649.18	295.76	283.26	-88.75	0.24	
6803.00	0.800	335.500	6785.17	297.40	284.82	-89.30	0.18	
6939.00	0.700	338.000	6921.16	299.15	286.45	-90.01	0.08	
7075.00	0.700	331.000	7057.15	300.77	287.95	-90.72	0.06	
7211.00	0.800	342.600	7193.14	302.51	289.58	-91.41	0.13	
7347.00	0.800	327.100	7329.12	304.35	291.29	-92.21	0.16	
7483.00	0.300	2.600	7465.12	305.58	292.44	-92.71	0.43	
7619.00	0.300	320.100	7601.12	306.24	293.07	-92.92	0.16	
7755.00	0.300	89.500	7737.11	306.48	293.35	-92.79	0.40	
7892.00	0.300	70.500	7874.11	306.45	293.47	-92.10	0.07	
8028.00	0.100	24.800	8010.11	306.59	293.69	-91.71	0.18	
8164.00	0.100	161.200	8146.11	306.56	293.69	-91.62	0.14	
8300.00	0.300	275.500	8282.11	306.56	293.61	-91.94	0.26	
8436.00	0.200	287.100	8418.11	306.78	293.72	-92.52	0.08	
8548.00	0.100	5.800	8530.11	306.97	293.87	-92.70	0.18	LAST BHI MWD SURVEY
8598.00	0.100	5.800	8580.11	307.06	293.96	-92.69	0.00	PROJECTION TO BIT



# Actual Wellpath Report

PINNACLE 15-2 AWP

Page 4 of 5



INTEQ

## REFERENCE WELLPATH IDENTIFICATION

Operator	KERR MCGEE OIL & GAS ONSHORE LP	Slot	SLOT#18 PINNACLE 15-2 (386'FSL & 2008'FEL)
Area	COLORADO	Well	PINNACLE 15-2
Field	WELD COUNTY (KERR MCGEE)	Wellbore	PINNACLE 15-2 AWB
Facility	SEC.02-T1N-R68W		

## HOLE & CASING SECTIONS Ref Wellbore: PINNACLE 15-2 AWB Ref Wellpath: PINNACLE 15-2 AWP

String/Diameter	Start MD [ft]	End MD [ft]	Interval [ft]	Start TVD [ft]	End TVD [ft]	Start N/S [ft]	Start E/W [ft]	End N/S [ft]	End E/W [ft]
12.25in Open Hole	15.00	934.00	919.00	15.00	933.97	0.00	0.00	1.59	-0.80
8.625in Casing Surface	15.00	924.00	909.00	15.00	923.97	0.00	0.00	1.54	-0.74
7.875in Open Hole	924.00	8598.00	7674.00	923.97	8580.11	1.54	-0.74	293.96	-92.69

## TARGETS

Name	MD [ft]	TVD [ft]	North [ft]	East [ft]	Grid East [srv ft]	Grid North [srv ft]	Latitude	Longitude	Shape
PINNACLE 15-2 BHL ON PLAT (660'FSL & 1980'FEL, REV-1)		6000.00	274.31	26.87	3148817.76	1270584.21	40°04'29.708"N	104°58'05.563"W	point
PINNACLE 15-2 GEO TARGET 50' RADIUS (660'FSL & 2067'FEL, REV-2)		6000.00	274.31	-60.87	3148730.03	1270583.68	40°04'29.708"N	104°58'06.692"W	circle
PINNACLE 15-2 LEGAL BOX (197'S,203'N,170'E,230'W OF GEO TARGET)		6000.00	277.31	30.87	3148821.74	1270587.23	40°04'29.738"N	104°58'05.512"W	square

## WELLPATH COMPOSITION Ref Wellbore: PINNACLE 15-2 AWB Ref Wellpath: PINNACLE 15-2 AWP

Start MD [ft]	End MD [ft]	Positional Uncertainty Model	Log Name/Comment	Wellbore
15.00	879.00	NaviTrak (Standard)	BHI NAVITRAK 12.25 HOLE <182-879>	PINNACLE 15-2 AWB
879.00	8548.00	NaviTrak (Standard)	BHI NAVITRAK 7.875 HOLE <948-8548>	PINNACLE 15-2 AWB
8548.00	8598.00	Blind Drilling (std)	Projection to bit	PINNACLE 15-2 AWB



# Actual Wellpath Report

PINNACLE 15-2 AWP

Page 5 of 5



**INTEQ**

## REFERENCE WELLPATH IDENTIFICATION

Operator	KERR MCGEE OIL & GAS ONSHORE LP	Slot	SLOT#18 PINNACLE 15-2 (386'FSL & 2008'FEL)
Area	COLORADO	Well	PINNACLE 15-2
Field	WELD COUNTY (KERR MCGEE)	Wellbore	PINNACLE 15-2 AWB
Facility	SEC.02-T1N-R68W		

## WELLPATH COMMENTS

MD [ft]	Inclination [°]	Azimuth [°]	TVD [ft]	Comment
8548.00	0.100	5.800	8530.11	LAST BHI MWD SURVEY
8598.00	0.100	5.800	8580.11	PROJECTION TO BIT