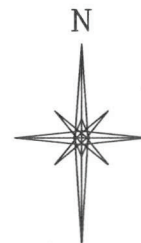
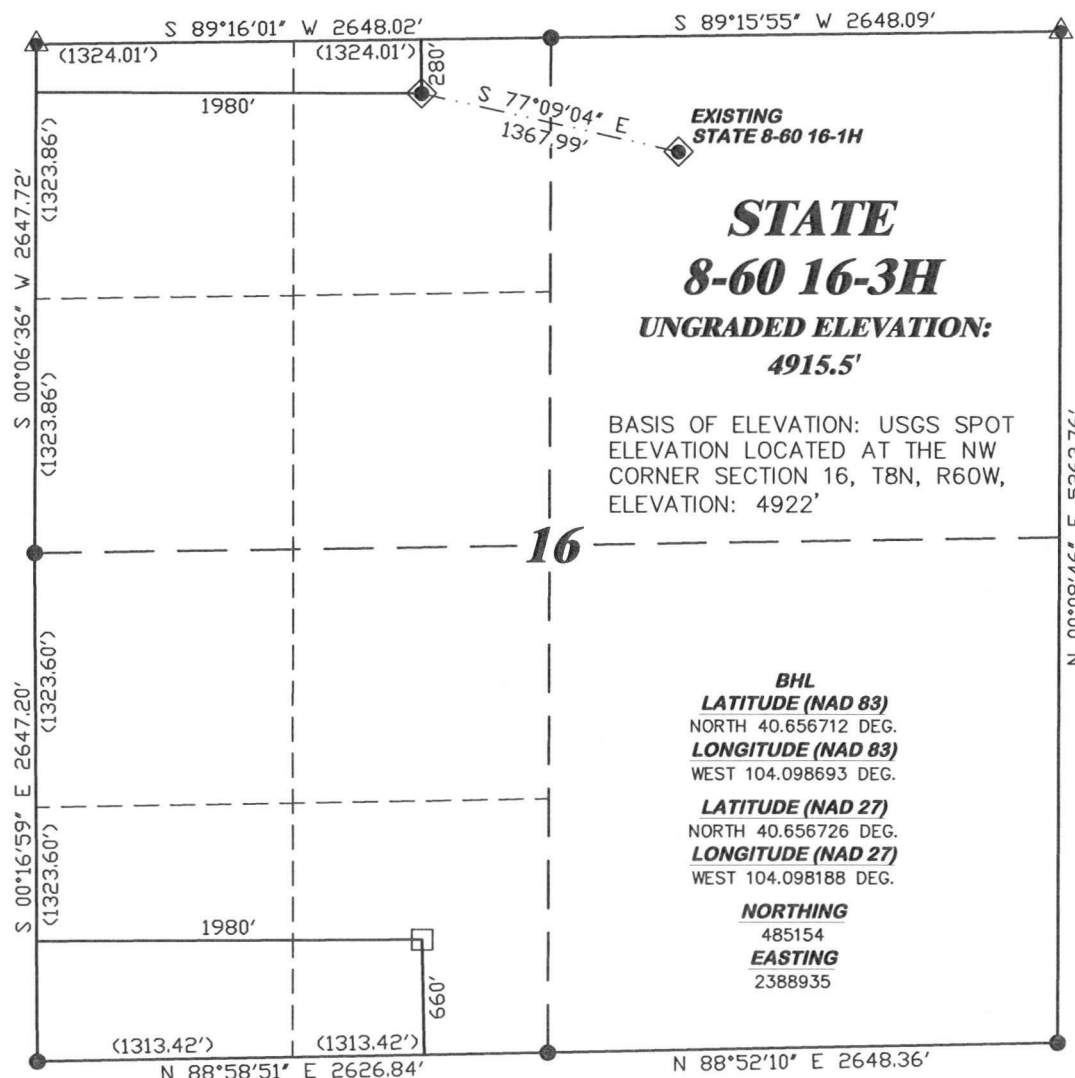


**R. 60 W.**



SCALE 1" = 1000'

**T. 8 N.**

**LATITUDE (NAD 83)**  
NORTH 40.668802 DEG.  
**LONGITUDE (NAD 83)**  
WEST 104.098462 DEG.

**LATITUDE (NAD 27)**  
NORTH 40.668816 DEG.  
**LONGITUDE (NAD 27)**  
WEST 104.097957 DEG.

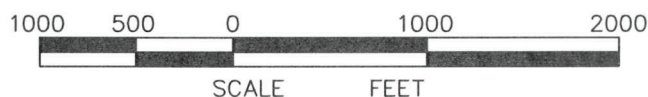
**NORTHING**  
489558.54  
**EASTING**  
2388929.14

**BASIS OF BEARING/DATUM**  
SPCS CO NORTH NAD 27  
BASED ON NGS TRIANGULATION  
STATION "SNOW"

**NOTES**

PRARIE LANDS  
NO EXISTING FEATURES WITHIN  
400' RADIUS OF WELL SITE.

GPS OPERATOR PAUL ORME  
OBSERVED A PDOP OF 2.2.  
ALL GPS OBSERVATIONS ARE IN  
COMPLIANCE WITH COGCC RULE No.215.



**SURVEYOR'S STATEMENT**

I, BRIAN L. FORBES, OF ROCK SPRINGS, WYOMING, HEREBY STATE: THIS MAP WAS MADE FROM NOTES TAKEN DURING AN ACTUAL FIELD SURVEY DONE UNDER MY DIRECT SUPERVISION ON NOVEMBER 18, 2011 AND THAT THIS PLAT CORRECTLY SHOWS THE LOCATION OF STATE 8-60 16-3H AS STAKED ON THE GROUND.

**LEGEND**

- ◆ WELL LOCATION
- BOTTOM HOLE LOC. (APPROX)
- FOUND MONUMENT
- ▲ PREVIOUSLY FOUND MONUMENT

*Brian L. Forbes*  
25367  
COLORADO RLS No. 25367  
11/29/11



**RIFFIN & ASSOCIATES, INC.**  
1414 ELK ST., ROCK SPRINGS, WY 82901

(307) 362-5028

DRAWN: 11/28/11 - JMB

SCALE: 1" = 1000'

REVISED: NA

DRG JOB No. 18946

EXHIBIT 1

**PLAT OF DRILLING LOCATION  
FOR  
CHESAPEAKE ENERGY LLC.**

**280' F/NL & 1980' F/WL, NENW, SECTION 16,  
T. 8 N., R. 60 W., 6th P.M.  
WELD COUNTY, COLORADO**