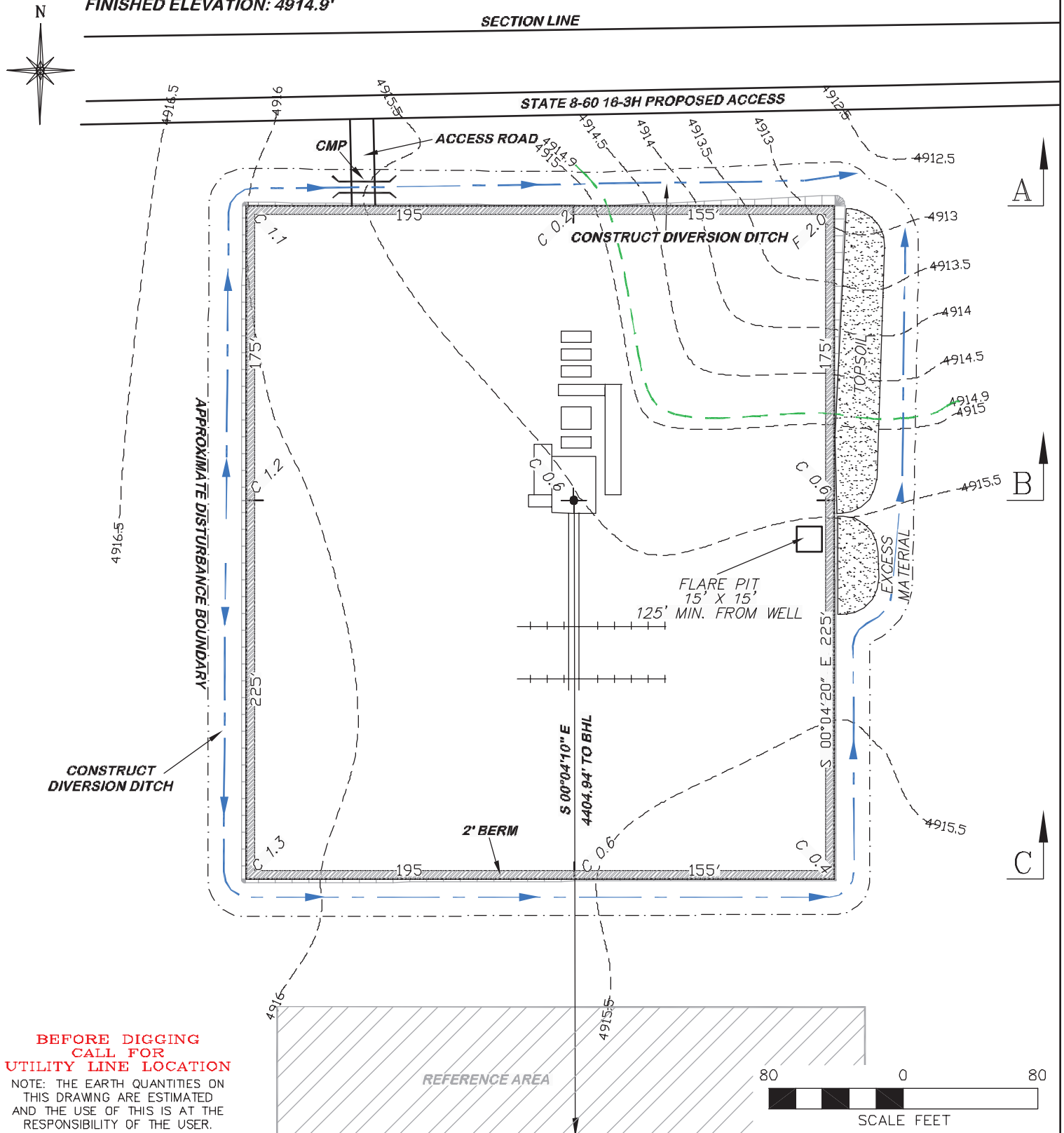


APPROXIMATE DISTURBANCE AREA: 4.2 ACRES±
0.7% GRADE ON A NORTHEASTERLY SLOPE
UNGRADED ELEVATION: 4915.5'
FINISHED ELEVATION: 4914.9'

2A ATTACHMENT

8A



DRG RIFFIN & ASSOCIATES, INC.
 1414 ELK ST., ROCK SPRINGS, WY 82901
 (307) 362-5028

CONSTRUCTION LAYOUT DRAWING 1 OF 3

CHESAPEAKE ENERGY, LLC.
STATE 8-60 16-3H
SECTION 16, T8N, R60W

ESTIMATED EARTHWORK

ITEM	CUT	FILL	TOPSOIL	EXCESS
PAD	3328 CY	465 CY	2593 CY	270 CY
PIT	0 CY			0 CY
TOTALS	3328 CY	465 CY	2593 CY	270 CY

DRAWN: 11/28/11 - JMB

SCALE: 1" = 80'

REVISED: NA

DRG JOB No. 18946

EXHIBIT 2