

T7S, R97W, 6th P.M.

1920 Brass Cap,  
1.5' High  
Lat: 39.481787°  
Long: 108.215422°

W.C. 1920 Brass  
Cap, 2.0' High.  
Lat: 39.481781°  
Long: 108.205328°

1920 Brass Cap,  
1.5' High,  
Lat: 39.481792°  
Long: 108.196089°

35.64' (G.L.O.)

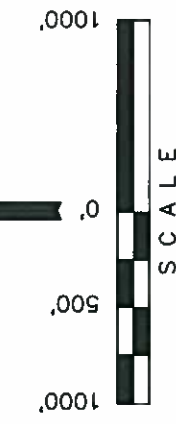
589°58'02"W - 2644.58' (Meas. to True)  
589°58'02"W - 2608.94' (Meas. to W.C.)

T6S N89°51'51"W - 2634.56' (Meas.)

T37W, Oil F.M.

SPOT ELEVATION AT THE NORTHWEST CORNER OF SECTION 30, T5S, R95W, 6th P.M. TAKEN FROM THE FORKED GULCH QUADRANGLE, COLORADO, GARFIELD COUNTY, 7.5 MINUTE SERIES (TOPOGRAPHICAL MAP) PUBLISHED BY THE UNITED STATES DEPARTMENT OF THE INTERIOR, GEOLOGICAL SURVEY. SAID ELEVATION IS MARKED AS BEING 5966 FEET.

BASIS OF BEARINGS IS A G.P.S. OBSERVATION.



THIS IS TO CERTIFY THAT THE ABOVE PLAT WAS PREPARED FROM FIELD NOTES OF ACTUAL SURVEYS MADE BY ME OR UNDER MY SUPERVISION AND THAT THE SAME ARE TRUE AND CORRECT TO THE BEST OF MY KNOWLEDGE AND BELIEF.

10-18-2011

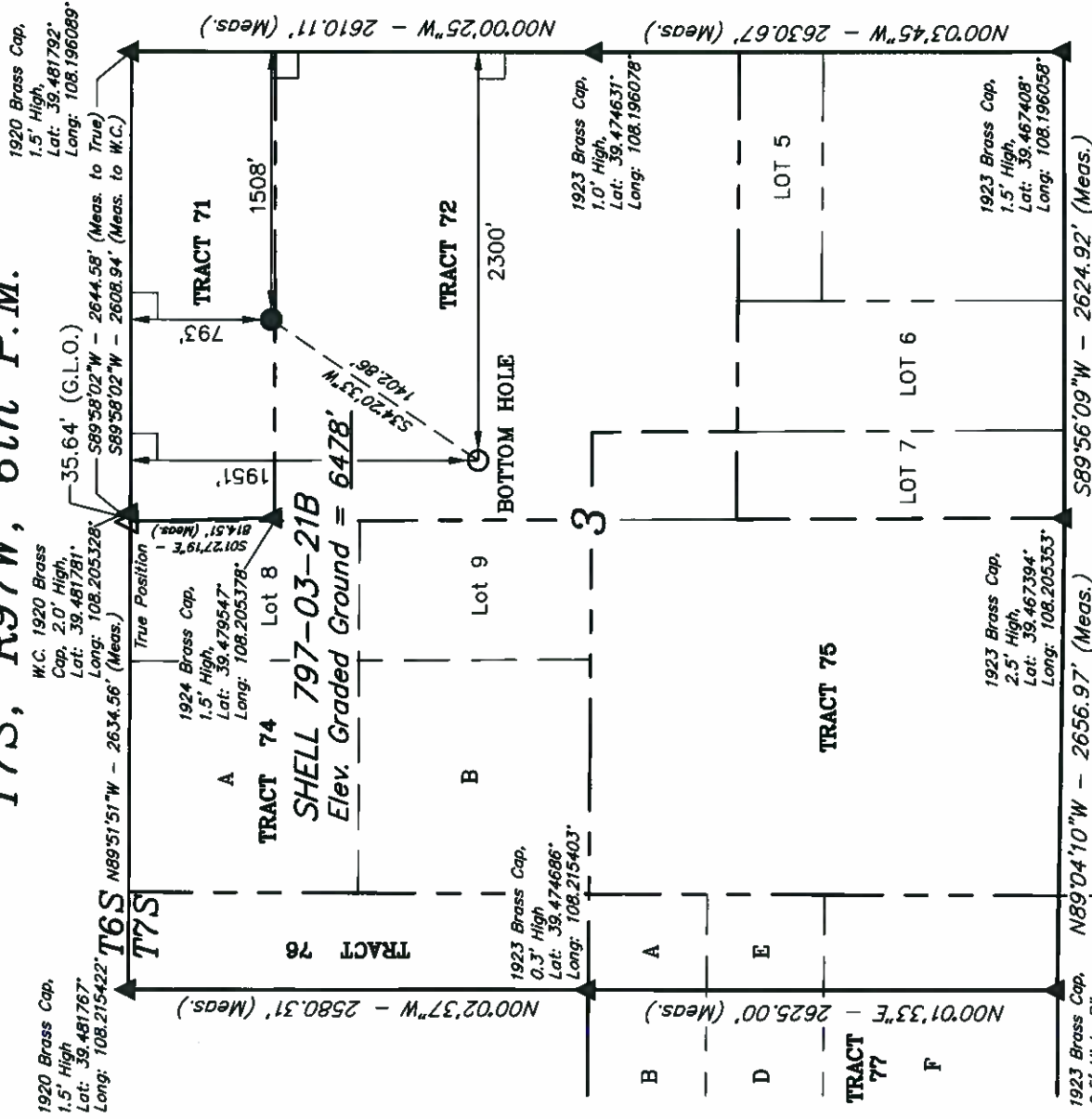
85 SOUTH 200 EAST - VERNAL UTAH 84078

SCALE	DATE SURVEYED:	DATE DRAWN:
1" = 1000'	08-17-11	10-07-

PARTY	REFERENCES
B.B.	D.R.B.
T.M.	G.L.O. PLAT

WEATHER

OXY USA WTP 1 P



**PDOP = 1.7**

**LEGEND:**

$\angle = 90^\circ$  SYMBOL

● = PROPOSED WELL HEAD.

▲ = SECTION CORNERS LOCATED

NAD 83 (TARGET BOTTOM HOLE)	NAD 83 (SURFACE LOCATION)
LATITUDE = 39°28'35.06" (39.476406)	LATITUDE = 39°28'46.51" (39.479586)
LONGITUDE = 108°12'17.50" (108.204861)	LONGITUDE = 108°12'07.42" (108.202061)
NAD 27 (TARGET BOTTOM HOLE)	NAD 27 (SURFACE LOCATION)
LATITUDE = 39°28'35.14" (39.476428)	LATITUDE = 39°28'46.59" (39.479608)
LONGITUDE = 108°12'15.20" (108.204222)	LONGITUDE = 108°12'05.13" (108.201425)