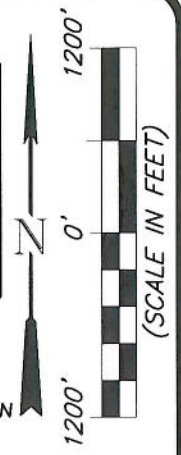


T9S, R95W, 6TH P.M.

SEE SHEET 1cc FOR CONTINUATION

LEGEND

- ◆ SECTION CORNER LOCATED
- ⊕ SURFACE LOCATION
- BOTTOM HOLE LOCATION
- ▣ RECORD LOCATION OF CORNER



CERTIFICATE OF SURVEYOR
I, TED TAGGART OF FRUITA, COLORADO HEREBY CERTIFY THAT THIS MAP WAS MADE FROM NOTES TAKEN DURING AN ACTUAL SURVEY MADE BY ME OR UNDER MY DIRECTION FOR ENCANA OIL & GAS (USA) INC. AND THAT THIS LOCATION HAS BEEN STAKED ON THE GROUND AS SHOWN HEREON.

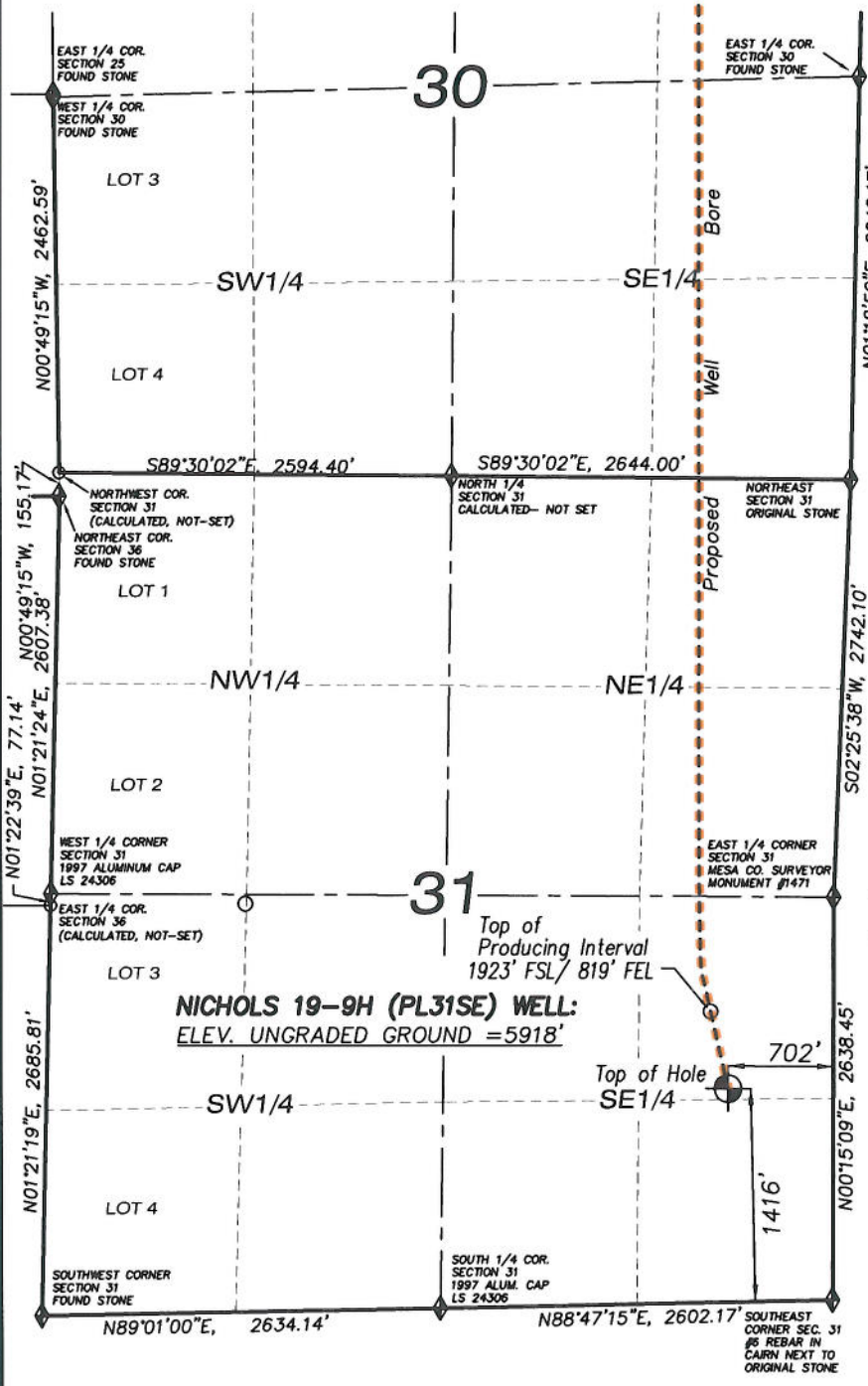


NICHOLS 19-9H (PL31SE) WELL
(WELLHEAD LOCATION) NAD 83
LATITUDE = 39.228513° N
LONGITUDE = 108.028210° W
(BOTTOM HOLE LOCATION) NAD 83
LATITUDE = 39.260173° N
LONGITUDE = 108.028838° W

NOTES

1. WELL FOOTAGES ARE MEASURED AT RIGHT ANGLES TO SECTION LINES.
2. BASIS OF BEARING: GEODETIC- BASED ON GPS OBSERVATIONS.
3. ELEVATIONS BASED ON GPS OBSERVATIONS, NAVD 88 (GEOID 03), POST PROCESSED USING NGS OPUS.
4. SEE ADDENDUM TO LEGAL PLAT (SHEET 1g) FOR VISIBLE IMPROVEMENTS WITHIN 400 FEET OF THE PROPOSED OIL & GAS LOCATION.
5. CONTROL FOR SURVEY WAS ESTABLISHED USING DIFFERENTIALLY CORRECTED GPS FROM AN OPUS BASED CONTROL NETWORK. WELL LOCATION WAS ESTABLISHED USING NON-GPS CONVENTIONAL METHODS, THEREFORE NO PDOP READING WAS TAKEN.

MAP to ACCOMPANY
APPLICATION for PERMIT to DRILL
Encana Oil & Gas (USA) Inc.
Nichols 19-9H (PL31SE) Well
NE1/4 SE1/4, SECTION 31
T9S, R95W, 6th P.M.
MESA COUNTY, COLORADO

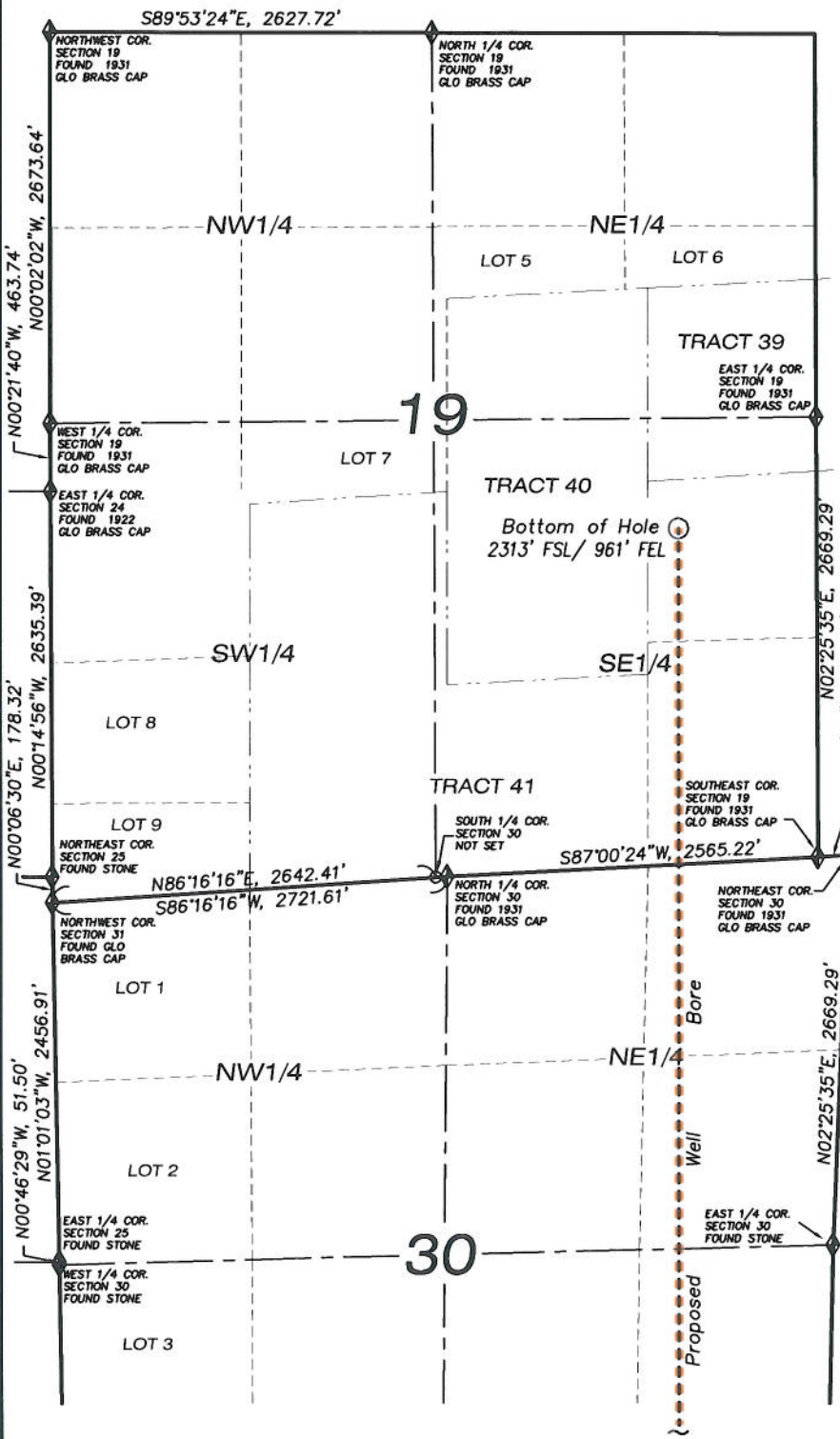


| | | | |
|----------------------|----------|--------------------------|--------------------|
| Location Plat | | Scale: 1" = 1200' | SHEET |
| Project No. | 07-04-45 | Date Surveyed: | 9/05/07 |
| Date Drawn: | 10/04/11 | Latest Revision Date: | 11/17/11 |
| | | | 1c OF 10 |



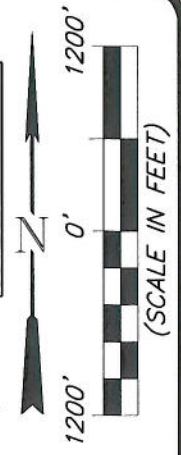
906 Main Street
Evanston, Wyoming 82930
Phone No. (307) 789-4545

T9S, R95W, 6TH P.M.



LEGEND

- ◆ SECTION CORNER LOCATED
- ⊕ SURFACE LOCATION
- BOTTOM HOLE LOCATION
- RECORD LOCATION OF CORNER



CERTIFICATE OF SURVEYOR
 I, TED TAGGART OF FRUITA, COLORADO HEREBY CERTIFY THAT THIS MAP WAS MADE FROM NOTES TAKEN DURING AN ACTUAL SURVEY MADE BY ME OR UNDER MY DIRECTION FOR ENCANA OIL & GAS (USA) INC. AND THAT THIS LOCATION HAS BEEN STAKED ON THE GROUND AS SHOWN HEREON.



NICHOLS 19-9H (PL31SE) WELL
 (WELLHEAD LOCATION) NAD 83
 LATITUDE = 39.228513° N
 LONGITUDE = 108.028210° W
 (BOTTOM HOLE LOCATION) NAD 83
 LATITUDE = 39.260173° N
 LONGITUDE = 108.028838° W

NOTES

1. WELL FOOTAGES ARE MEASURED AT RIGHT ANGLES TO SECTION LINES.
2. BASIS OF BEARING: GEODETIC- BASED ON GPS OBSERVATIONS.
3. ELEVATIONS BASED ON GPS OBSERVATIONS, NAVD 88 (GEOID 03), POST PROCESSED USING NGS OPUS.
4. SEE ADDENDUM TO LEGAL PLAT (SHEET 1g) FOR VISIBLE IMPROVEMENTS WITHIN 400 FEET OF THE PROPOSED OIL & GAS LOCATION.
5. CONTROL FOR SURVEY WAS ESTABLISHED USING DIFFERENTIALLY CORRECTED GPS FROM AN OPUS BASED CONTROL NETWORK. WELL LOCATION WAS ESTABLISHED USING NON-GPS CONVENTIONAL METHODS, THEREFORE NO PDOP READING WAS TAKEN.

MAP to ACCOMPANY
 APPLICATION for PERMIT to DRILL
 Encana Oil & Gas (USA) Inc.
Nichols 19-9H (PL31SE) Well
 NE1/4 SE1/4, SECTION 31
 T9S, R95W, 6th P.M.
 MESA COUNTY, COLORADO

-SEE SHEET 1c FOR CONTINUATION-

| | | | |
|----------------------|----------|--------------------------------|--------------------------------------------|
| <i>Location Plat</i> | | Scale: 1" = 1200' | SHEET 1cc OF 10 |
| Project No. | 07-04-45 | Date Surveyed: 9/05/07 | |
| Date Drawn: | 10/04/11 | Latest Revision Date: 11/17/11 | |
| | | | |
| | | | |



906 Main Street
 Evanston, Wyoming 82930
 Phone No. (307) 789-4545