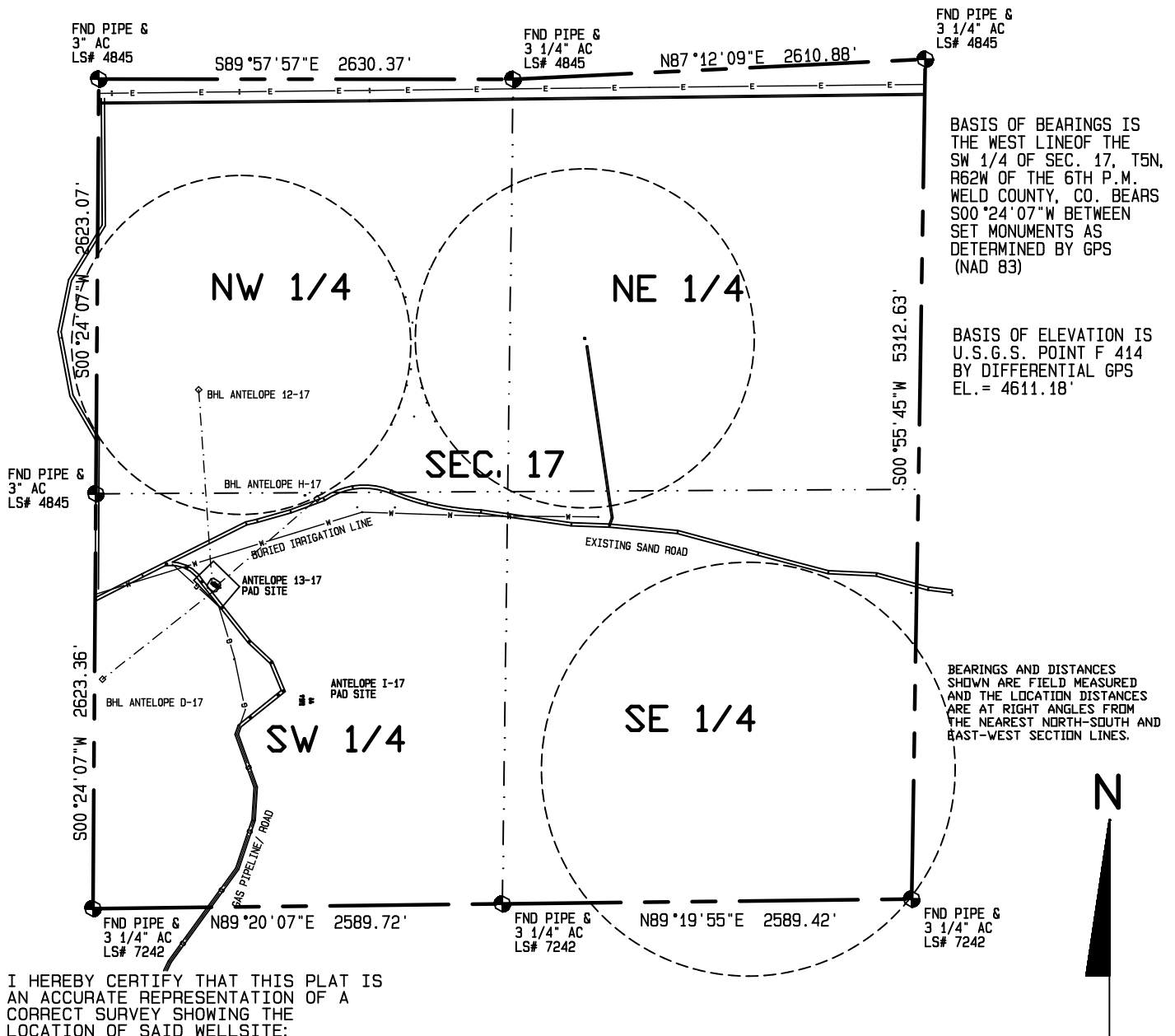
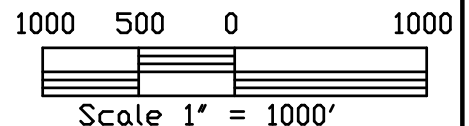


SURFACE HOLE LOCATIONS					BOTTOM HOLE LOCATIONS				
WELL	LAT.	LONG.	EL.	FSL	FWL	WELL	LAT.	LONG.	N/S
12-17	40.39789°	-104.35384°	4672.61'	2047.9'	738.4'	12-17	40.40126°	-104.35408°	1964.2' FNL
13-17	40.39786°	-104.35380°	4672.58'	2037.0'	749.7'	13-17	STR	STR	645.8' FWL
H-17	40.39784°	-104.35375°	4672.61'	2028.3'	763.1'	H-17	40.39933°	-104.35143°	2575.0' FSL
D-17	40.39781°	-104.35371°	4672.97'	2019.2'	775.4'	D-17	40.39625°	-104.35635°	1450.0' FSL
									50.0' FWL

Visible improvements within 400 feet of the location include: A field road passes 265' North
A gas line passes West An irrigation line passes approximately 189' north.



I HEREBY CERTIFY THAT THIS PLAT IS AN ACCURATE REPRESENTATION OF A CORRECT SURVEY SHOWING THE LOCATION OF SAID WELLSITE:



Dan Griggs PLS# 38018

CONTRACT SURVEYORS, LTD.
COMPLETE SURVEYING AND GLOBAL POSITIONING

2133 SOUTH BELLAIRE STREET #14
DENVER COLORADO 80222
(303) 756-3695



MULTI-WELL PLAN
PAGE 1

CSL# 11104-66

DATE OF FIELD WORK:

21 JULY, 2010

DATE OF DRAWING:

23 NOVEMBER, 2010

ANTELOPE I3-17 MULTI WELL PLAN

NE 1/4, SW 1/4 SEC. 17, T5N, R62W

BONANZA CREEK ENERGY OPERATING COMPANY, LLC

WELD COUNTY, COLORADO