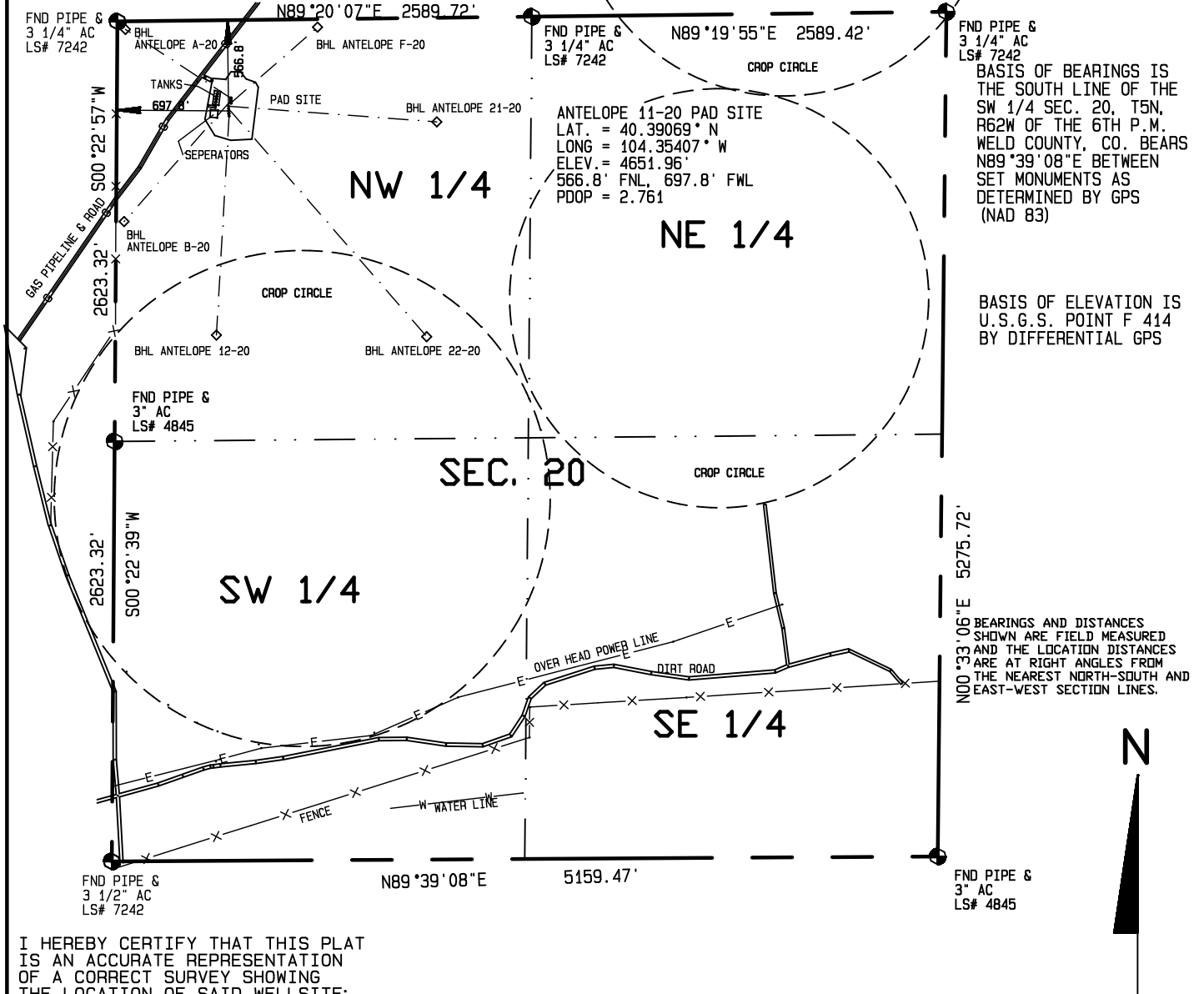


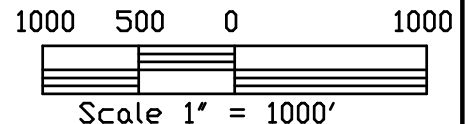
SURFACE HOLE LOCATIONS						BOTTOM HOLE LOCATIONS					
WELL	LAT.	LONG.	EL.	FNL	FWL	WELL	LAT.	LONG.	N/S	E/W	FWL
A-20	40.39091°	-104.35402°	4651.81'	487.0'	710.8'	A-20	40.39211°	-104.35636°	50.0' FNL	50.0'	FWL
B-20	40.39087°	-104.35402°	4651.74'	502.0'	711.7'	B-20	40.38882°	-104.35644°	1250.0' FNL	50.0'	FWL
F-20	40.39083°	-104.35401°	4651.67'	516.9'	712.6'	F-20	40.39211°	-104.35205°	50.0' FNL	1250.0'	FWL
21-20	40.39077°	-104.35407°	4652.00'	537.6'	697.2'	21-20	40.39046°	-104.34940°	650.0' FNL	1998.7'	FWL
22-20	40.39073°	-104.35407°	4652.10'	552.2'	697.5'	22-20	40.38678°	-104.34969°	1991.2' FNL	1944.9'	FWL
11-20	40.39069°	-104.35407°	4651.96'	566.8'	697.8'	11-20	40.39069°	-104.35407°	566.8' FNL	697.8'	FWL
12-20	40.39060°	-104.35406°	4652.02'	599.6'	701.2'	12-20	40.38685°	-104.35441°	1965.8' FNL	631.3'	FWL

IMPROVEMENTS WITHIN 400' OF THE WELL SITE INCLUDE: A GAS PIPE LINE & ROAD PASSES 269 FEET TO THE NORTHWEST. TANKS ARE LOCATED 72' WEST AND SEPARATORS ARE 100' SOUTHWEST.



I HEREBY CERTIFY THAT THIS PLAT IS AN ACCURATE REPRESENTATION OF A CORRECT SURVEY SHOWING THE LOCATION OF SAID WELLSITE:

Dan Griggs PLS# 38018



CONTRACT SURVEYORS, LTD.
 COMPLETE SURVEYING AND GLOBAL POSITIONING

2133 SOUTH BELLAIRE STREET #14
 DENVER COLORADO 80222
 (303) 756-3695



DATE OF FIELD WORK:

8 NOVEMBER 2011

DATE OF DRAWING:

22 NOVEMBER 2011

ANTELOPE 11-20 Multi Well Plan

NW 1/4, NW 1/4 SEC. 20, T5N, R62W

BONANAZA CREEK ENERGY OPERATING COMPANY, LLC

MULTIPLE WELL PLAN
 PAGE 1

CSL# 11104-63

WELD COUNTY, COLORADO