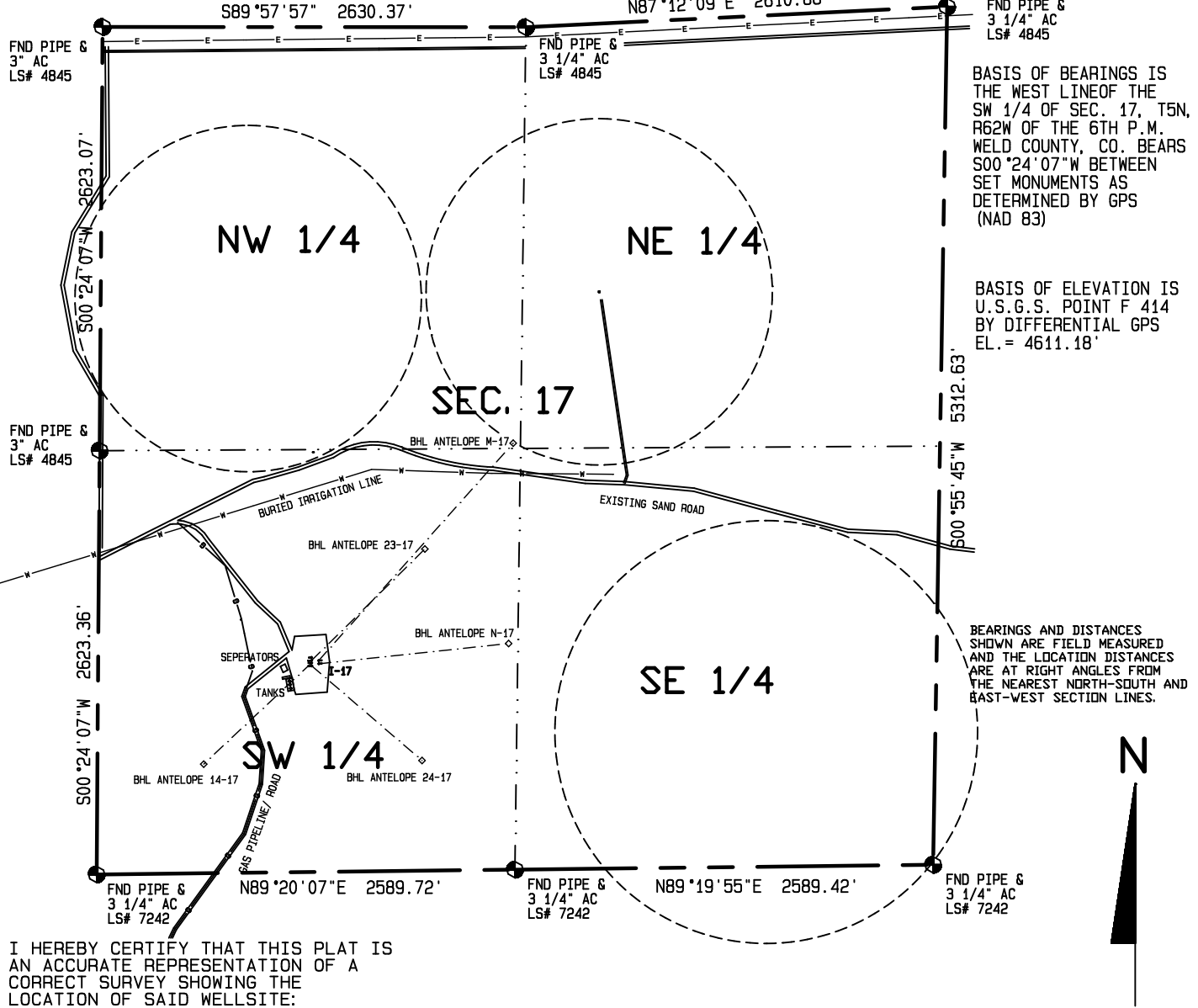


SURFACE HOLE LOCATIONS						BOTTOM HOLE LOCATIONS						N/S	E/W
WELL	LAT.	LONG.	EL.	FSL	FWL	WELL	LAT.	LONG.	STR	STR		STR	STR
I-17	40.39591°	-104.35180°	4643.46'	1327.3'	1320.8'	I-17	40.39773°	-104.34925°	23-17	40.39773°	-104.34925°	1991.1' FSL	2017.6' FWL
23-17	40.39586°	-104.35180°	4643.95'	1309.1'	1321.2'	23-17	40.39412°	-104.35423°	14-17	40.39412°	-104.35423°	675.7' FSL	657.7' FWL
14-17	40.39582°	-104.35180°	4643.48'	1294.5'	1321.5'	14-17	40.39412°	-104.35423°	24-17	40.39414°	-104.34937°	682.0' FSL	2009.1' FWL
24-17	40.39577°	-104.35180°	4643.84'	1276.3'	1321.8'	24-17	40.39414°	-104.34937°	M-17	40.39951°	-104.34726°	2575.0' FNL	2560.0' FWL
M-17	40.39588°	-104.35164°	4642.73'	1308.3'	1365.5'	M-17	40.39951°	-104.34726°	N-17	40.39610°	-104.34742°	1400.0' FSL	2540.0' FWL
N-17	40.39580°	-104.35164°	4642.73'	1288.3'	1366.0'	N-17	40.39610°	-104.34742°					

Visible improvements within 400 feet of the site location include: NE corner of a tank battery berm is 174' at 224°, separator berm is 166' at 246°, a gas line is 376' at 258°, and the service road is 140' at 285°.

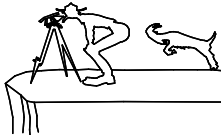


I HEREBY CERTIFY THAT THIS PLAT IS AN ACCURATE REPRESENTATION OF A CORRECT SURVEY SHOWING THE LOCATION OF SAID WELLSITE:

Dan Griggs PLS# 38018

CONTRACT SURVEYORS, LTD.
COMPLETE SURVEYING AND GLOBAL POSITIONING

2133 SOUTH BELLAIRE STREET #14
DENVER COLORADO 80222
(303) 756-3695



MULTI-WELL PLAN
PAGE 1

CSL# 10104-62

DATE OF FIELD WORK:

16 NOVEMBER, 2011

DATE OF DRAWING:

28 NOVEMBER, 2011

ANTELOPE I-17 MULTI-WELL PLAN

NE 1/4, SW 1/4 SEC. 17, T5N, R62W

BONANZA CREEK ENERGY OPERATING COMPANY, LLC

WELD COUNTY, COLORADO

1000 500 0 1000



Scale 1" = 1000'