

Tiffany Stebbins
UIC Coordinator
Regulatory Compliance



Wyoming Asset Team
1501 Stampede Avenue
Cody, WY 82414
Telephone 307.527.2223 Mobile 307.250.7476
Fax 307.527.3280
tastebbins@marathonoil.com

December 13, 2011

David Bauer
Weld County
1111 H Street
Greeley, CO 80632

Re: 30 Day Notice Requirement (Rule 305)
Advance Notice of Drilling Operations

Crow Valley 7-62-35-2H Well
NENW Section 35, Township 7N, Range 62W
366' FNL and 1837' FWL
Weld County, Colorado

Crow Valley 7-62-26-2H Well
NENW Section 35, Township 7N, Range 62W
342' FNL and 1819' FWL
Weld County, Colorado

Dear Mr. Greeley:

Marathon Oil Company ("Marathon") is filing Applications for Permit to Drill with the Colorado Oil and Gas Conservation Commission for the above referenced wells.

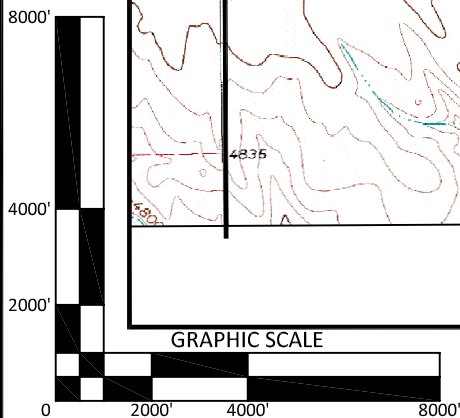
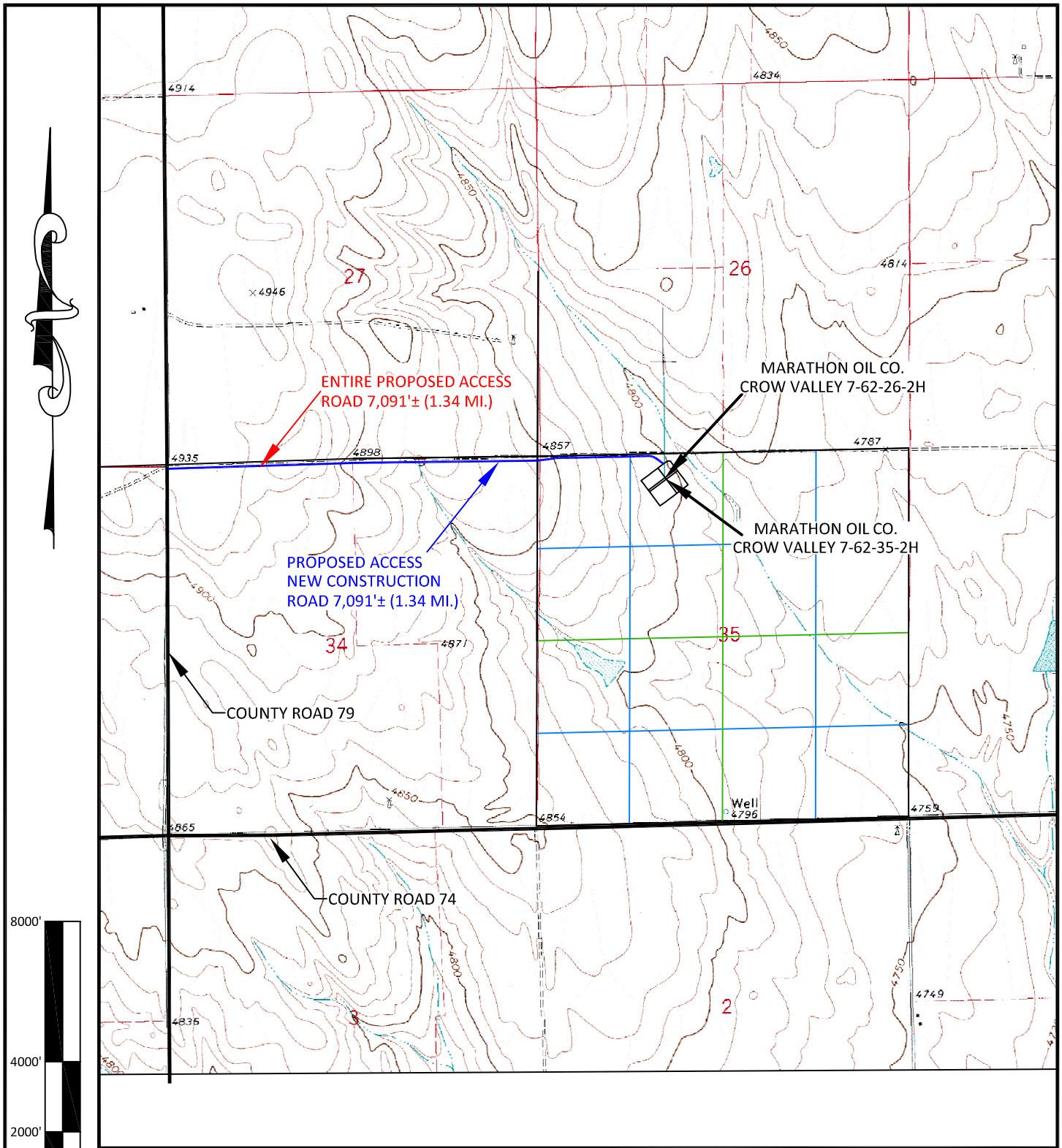
The enclosed notification, pursuant to Rule 305, is required as part of the filing process. Please contact Greg Ralston, Marathon Land Representative, at 713-296-2409 if you have any questions.

Sincerely,

A handwritten signature in black ink that reads 'Tiffany Stebbins'.

Tiffany Stebbins
Regulatory Compliance Rep.

Enclosures: Well Location Plat
Pad & Road Location Plats



CONFIDENTIALITY NOTES:
The information contained in this plat is legally privileged and confidential information intended only for the use of the recipients. If you are not the intended recipients, you are hereby notified that any use, dissemination, distribution or copying of this information is strictly prohibited.



**WILLIAM H. SMITH
& ASSOCIATES P.C.**
SURVEYING CONSULTANTS
550 EAST SECOND NORTH PHONE: 307-875-3638
GREEN RIVER, WY 307-875-3639
www.whsmithpc.com

DRAWN BY: BW	CHECKED BY: RAW
PROJECT NO: 762352H	JOB NO: 2011001
REVISIONS:	

LEGEND

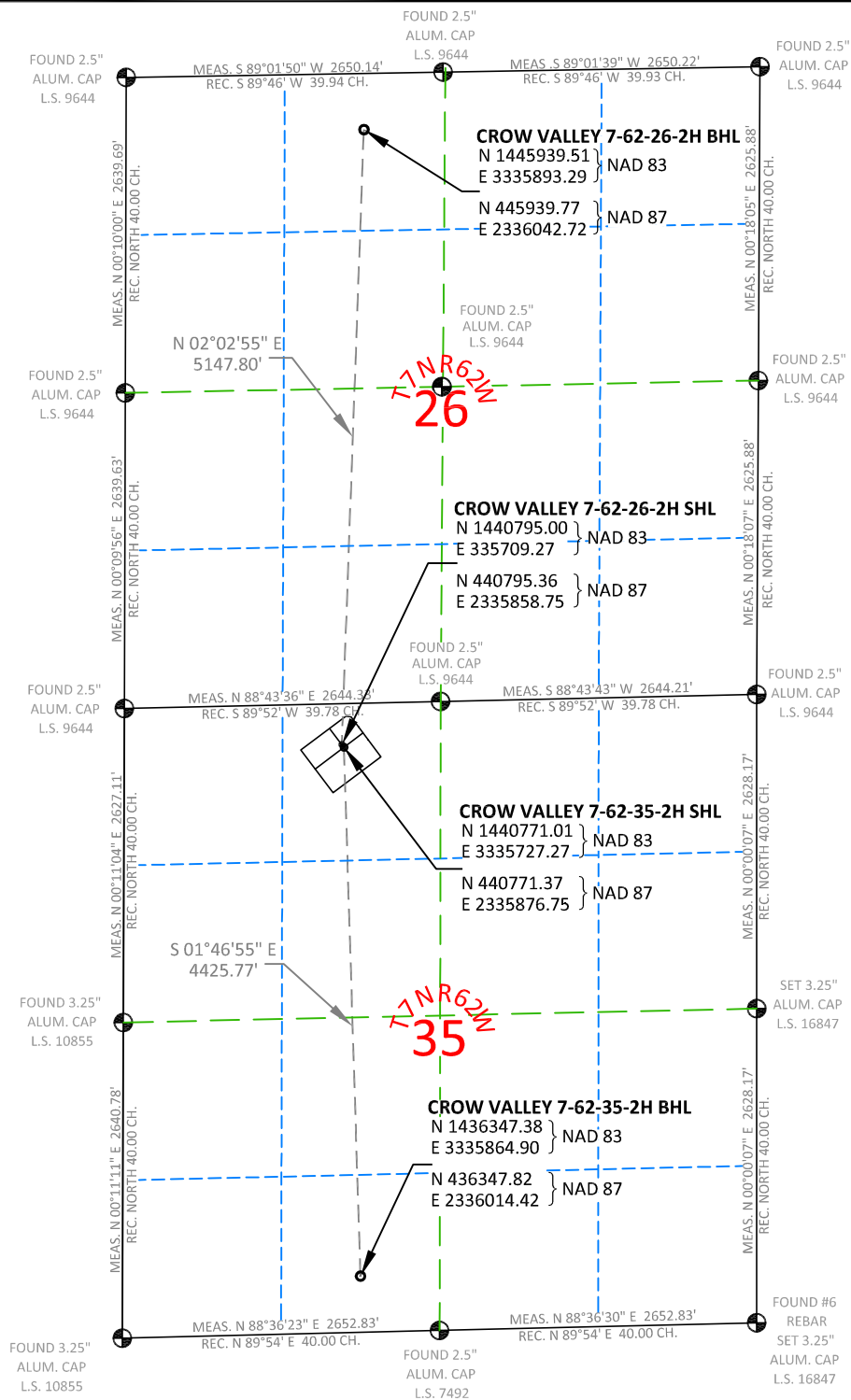
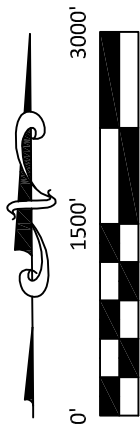
PROPOSED ACCESS	---
EXISTING 2-TRACK	- - - - -
EXISTING ROAD	—————
1/16TH LINE	---
1/4 LINE	---
SECTION LINE	---

LOCATION:
CROW VALLEY
7-62-35-2H &
7-62-26-2H
WITHIN THE NE1/4
NW1/4 SECTION 35,
T 7 N, R 62 W,
6TH PM.
WELD COUNTY,
COLORADO

MARATHON OIL COMPANY
PO BOX 3128, HOUSTON TX, 77253
5555 SAN FELIPE, HOUSTON TX, 77056

ACCESS ROAD MAP

SCALE: 1"=2000'	EXHIBIT "E"
DATE: 11/28/2011	SHEET 4 of 15



NOTES:

- All bearings and distances are **GRID**, based on the Colorado State Plane Coordinate System, North Zone, North American Datum 1983 from GPS observations occupying a WHS control point (5/8" rebar) and having the Location and Elevation derived from an Opus Solution.
- Vertical Datum used is of NAVD 88.
- Record Bearings and Distances as shown are based on the General Land Office Survey plat approved on the 16th day of December 1872.



**WILLIAM H. SMITH
& ASSOCIATES P.C.**

SURVEYING CONSULTANTS
550 EAST SECOND NORTH PHONE: 307-875-3638
GREEN RIVER, WY 307-875-3639
www.whsmithpc.com

DRAWN BY: BW

CHECKED BY: RAW

PROJECT NO: 762352H

JOB NO: 2011001

REVISIONS:

CONFIDENTIALITY NOTES:

The information contained in this plat is legally privileged and confidential information intended only for the use of the recipients. If you are not the intended recipients, you are hereby notified that any use, dissemination, distribution or copying of this information is strictly prohibited.

LOCATION:

CROW VALLEY
7-62-35-2H &
7-62-26-2H
WITHIN THE NE1/4
NW1/4 SECTION 35,
T 7 N, R 62 W,
6TH PM.
WELD COUNTY,
COLORADO

MARATHON OIL COMPANY
PO BOX 3128, HOUSTON TX, 77253
5555 SAN FELIPE, HOUSTON TX, 77056

MULTI WELL PAD

SCALE: 1"=1500'

DATE: 11/28/2011

EXHIBIT "P"

SHEET 15 OF 15