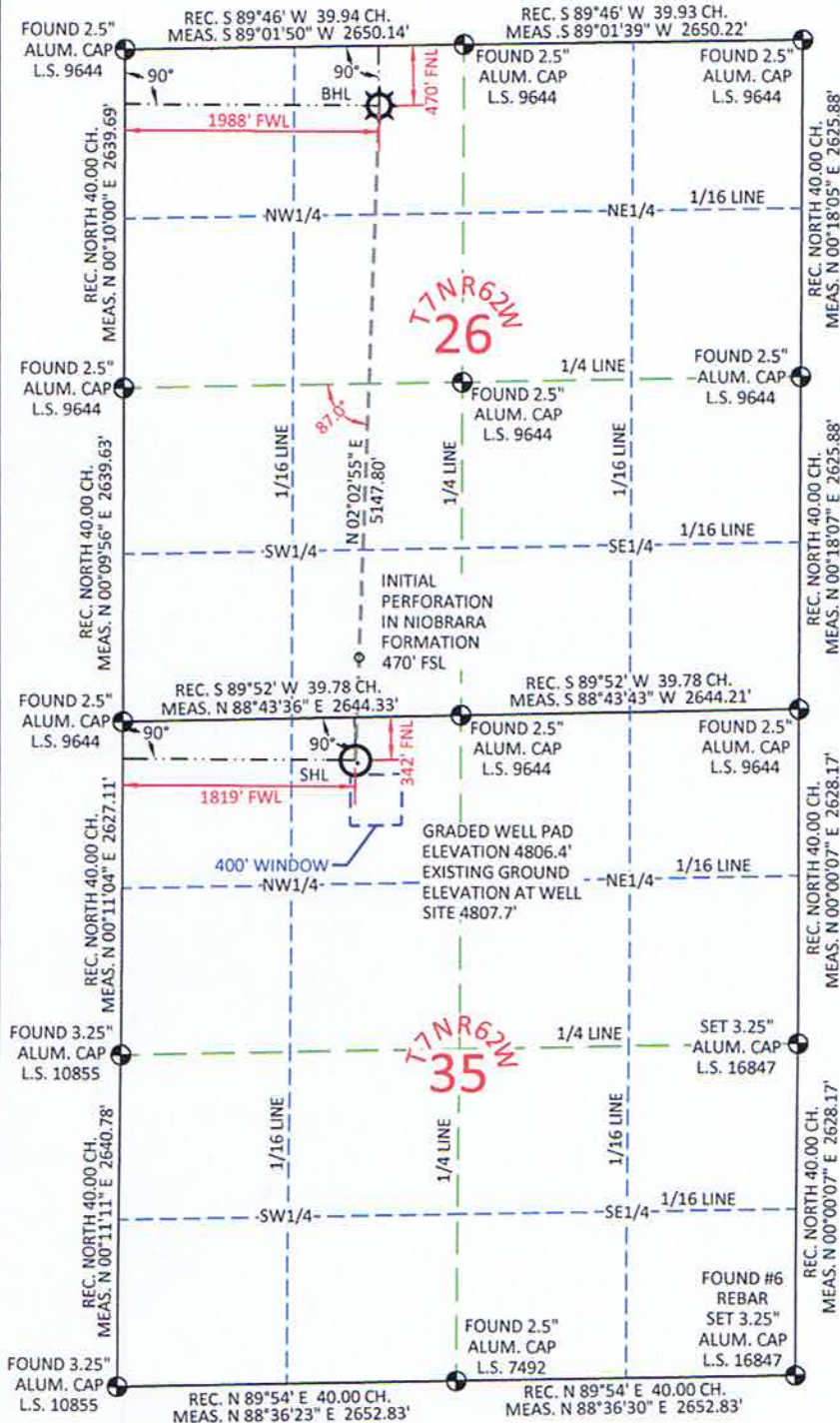
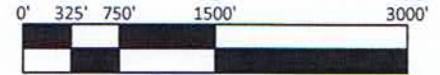


# MARATHON CROW VALLEY 7-62-26-2H

SURFACE HOLE LOCATED WITHIN THE NE1/4 NW1/4 SECTION 35 T7N R62W  
BOTTOM HOLE LOCATED WITHIN THE NE1/4 NW1/4 SECTION 26 T7N R62W  
OF THE 6TH P.M., WELD COUNTY, COLORADO

(SHL SECTION 35)  
CURRENT LAND USE:  
CROPLAND  
IMPROVEMENTS:  
NONE  
PLANT COMMUNITIES:  
WHEAT & MILLET

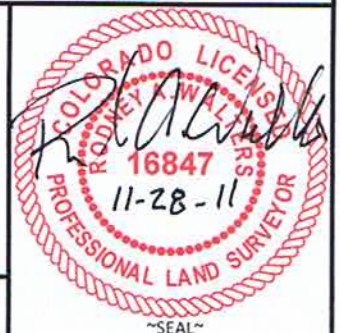


SURFACE HOLE LOCATION (SEC 35)		BOTTOM HOLE LOCATION (SEC 26)	
LAT.	40.537106°	LAT.	40.551219°
LONG.	104.292145°	LONG.	104.291231°
LAT.	40.537123°	LAT.	40.551236°
LONG.	104.291639°	LONG.	104.290725°
LAT.	40°32'13.58"	LAT.	40°33'04.39"
LONG.	104°17'31.72"	LONG.	104°17'28.43"
LAT.	40°32'13.64"	LAT.	40°33'04.45"
LONG.	104°17'29.90"	LONG.	104°17'26.61"
NORTH	1440795.00	NORTH	1445939.51
EAST	3335709.27	EAST	3335893.29
NORTH	440795.36	NORTH	445939.77
EAST	2335858.75	EAST	2336042.72
FOOTAGE: 1819' FWL - 342' FNL		FOOTAGE: 1988' FWL - 470' FNL	

MEASURE DATE	INSTRUMENT OPERATOR	PDOP	SHL GRND ELEV.
11/04/2011	ALLEN BLATTEL	2.9	4807.7'

I, Rodney A. Walters, Professional Land Surveyor, CO. PLS # 16847 hereby certify that (in accordance with a request from Anna Walls with Marathon Oil Co, 5555 San Felipe, Houston, TX 77056) I and or personnel under my direction made a survey on the 4th day of November 2011, for the Surface Hole Location and Elevation of Marathon Oil Co. CROW VALLEY 7-62-26-2H being located the NE 1/4 of the NW 1/4, Section 35, T7N R62W and the Bottom Hole Location being located in the NE1/4 NW1/4 of Section 26, T7N, R62W, both being of the 6th P.M., Weld County, State of Colorado.

- All bearings and distances are **GRID**, based on the Colorado State Plane Coordinate System, North Zone, North American Datum 1983 from GPS observations occupying a WHS control point (5/8" rebar) and having the Location and Elevation derived from an Opus Solution.
- Vertical Datum used is of NAVD 88.
- Record Bearings and Distances as shown are based on the General Land Office Survey plat approved on the 16th day of December 1872.



## CONFIDENTIALITY NOTES:

The information contained in this plat is legally privileged and confidential information intended only for the use of the recipients. If you are not the intended recipients, you are hereby notified that any use, dissemination, distribution or copying of this information is strictly prohibited.



**WILLIAM H. SMITH  
& ASSOCIATES P.C.**

**SURVEYING CONSULTANTS**

550 EAST SECOND NORTH PHONE: 307-875-3638  
GREEN RIVER, WY 307-875-3639  
www.wsmithpc.com

DRAWN BY: LAL CHECKED BY: RAW  
PROJECT NO: 762262H JOB NO: 2011001  
REVISIONS: 11/15/11 BHL TO 470' 11/28/11 ENTRY CHG

## LEGEND

- FOUND CORNER
- ⊗ CALCULATED CORNER
- NOTHING FOUND

## LOCATION:

CROW VALLEY 7-62-26-2H  
WITHIN THE NE 1/4 NW 1/4  
SECTION 35,  
T 7 N, R 62 W,  
6TH P.M.,  
WELD COUNTY,  
COLORADO

## MARATHON OIL COMPANY

PO BOX 3128, HOUSTON TX, 77253  
5555 SAN FELIPE, HOUSTON TX, 77056

## WELL LOCATION PLAT

SCALE: 1"=1500'  
DATE: 11/09/2011 EXHIBIT "A"  
SHEET 1 OF 1