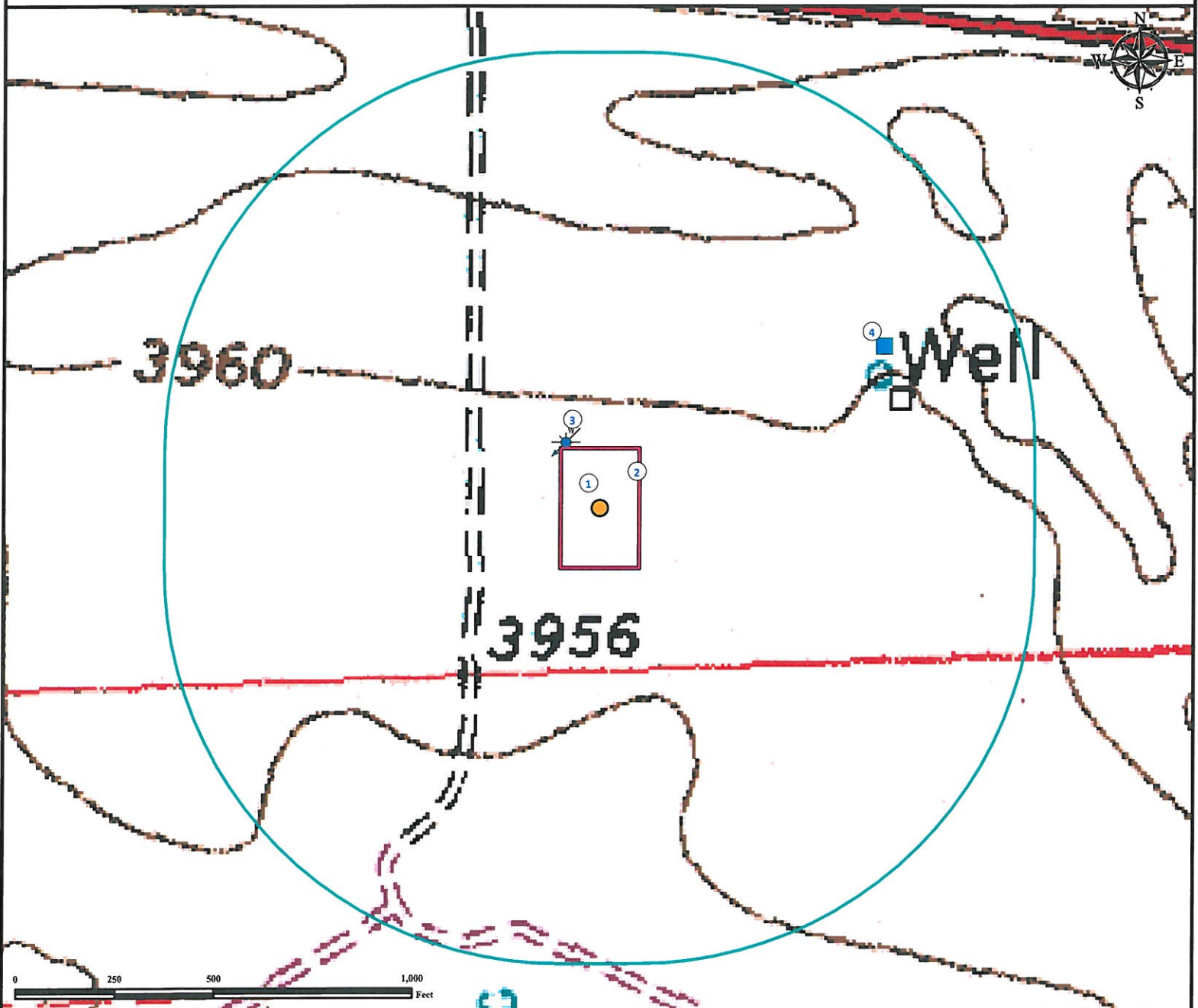


# Hydrology Map

## DEXTER 1 - 30

SW¼ SE¼ SECTION 30, TOWNSHIP 2 NORTH, RANGE 46 WEST OF THE 6TH PRINCIPAL MERIDIAN



1. Proposed well DEXTER 2-30.
2. Operational Disturbance Area.
3. Water Well (Permit #8802) is  $\pm 190'$  NW (does not exist in this location per field verify).

4. Water pump is  $\pm 826'$  NE.

### Legend

- Proposed Well
- Disturbance Area
- Water Pump
- Water Well
- 1000' Radius

### Reference Location

\*\* All Measurements are Made from Reference Well DEXTER 1-30 \*\*

Lat: 40.105643° Long: -102.557024° (NAD83)  
Elevation: 3958 Feet



Use our resources to find yours!  
[www.petro-fs.com](http://www.petro-fs.com)  
(303) 928-7128

Field Date: 11/29/2011  
Drafting Date: 12/08/2011  
Drafter: KLM  
Checked By: BHF

Data Sources:  
TOPO courtesy USGS  
Water Well data courtesy of CDOWR

Prepared for: **PETRON  
DEVELOPMENT  
COMPANY**