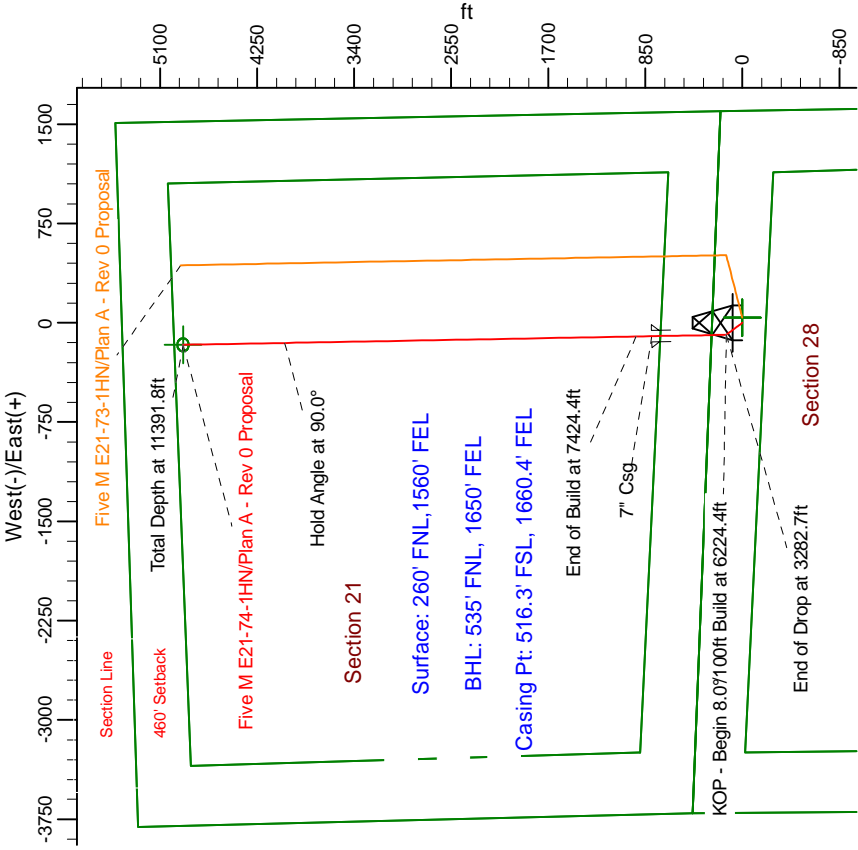
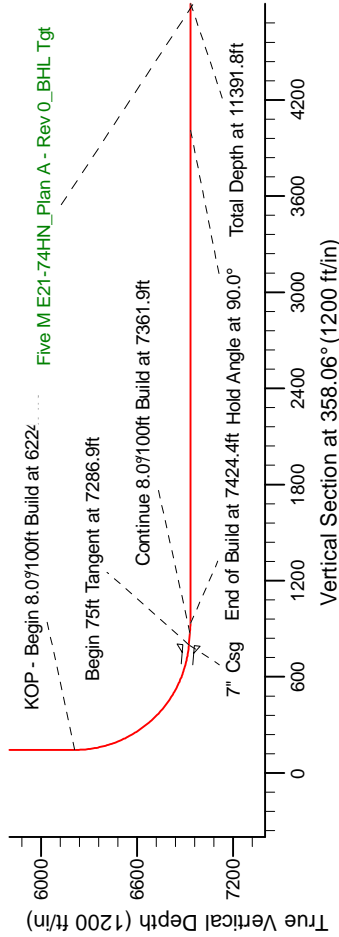
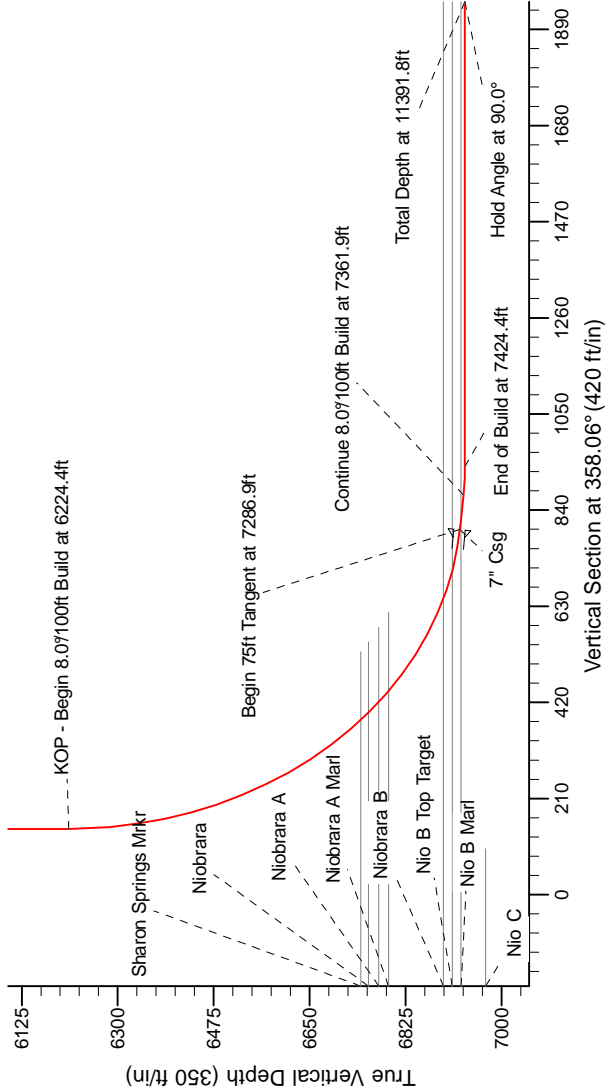


Project: Weld County Colorado (NAD 83)
Site: Sec. 21, T6N, R65W
Well: Five M E21-74-1HN
Wellbore: Plan A - Rev) (PERMITTING PLAN ONLY)
Design: Plan A - Rev 0 Proposal

Noble Energy

SECTION DETAILS

Sec	MD	Inc	Azi	TVD	+N/-S	+E/-W	Dleg	TFace	VSect	Target
1	0.0	0.00	0.00	0.0	0.0	0.0	0.00	0.00	0.0	
2	2000.0	0.00	0.00	2000.0	0.0	0.0	0.00	0.00	0.0	
3	2480.2	12.00	327.45	2476.7	42.2	-27.0	2.50	327.45	43.1	
4	2802.5	12.00	327.45	2791.9	98.8	-63.0	0.00	0.00	100.8	
5	3282.7	0.00	0.00	3268.6	141.0	-90.0	2.50	180.00	144.0	
6	6224.4	0.00	0.00	6210.3	141.0	-90.0	0.00	0.00	144.0	
7	7286.9	85.00	359.09	6923.8	794.7	-100.4	8.00	359.09	797.6	
8	7361.9	85.00	359.09	6930.3	869.4	-101.6	0.00	0.00	872.3	
9	7424.4	90.00	359.09	6933.1	931.6	-102.6	8.00	0.00	934.7	
10	11391.8	90.00	359.08	6933.0	4898.7	-166.8	0.00	-71.07	4901.5	Five M E21-74-1HN_Plan A - Rev 0_BHL Tgt



T G M

Magnetic Model: IGMP200510
Date: 9/2/2011
Magnetic North is 3.57° E of True North
Declination: 3.57° E
Dip Angle: 66.47°
Field Strength: 53174.6

Grid North is 3.57° E of True North
Magnetic North is 3.57° E of True North
To convert to Magnetic: Declination is 3.57° E of True
To convert to Grid: Declination is 3.57° E of True

WELL DETAILS: Five M E21-74-1HN(NAD83 Geodetic System)			
Northing	Ground Level:	Longitude	
430669.87	Easting	Latitude	
	985256.17	40° 27' 50.256 N	104° 39' 52.344 W
Plan: Plan A - Rev 0 Proposal (Five M E21-74-1HN/Plan A - Rev) (PERMITTING PLAN ONLY))			
Created By: Erasmo Mendoza		Date: 15.32, September 08 2011	