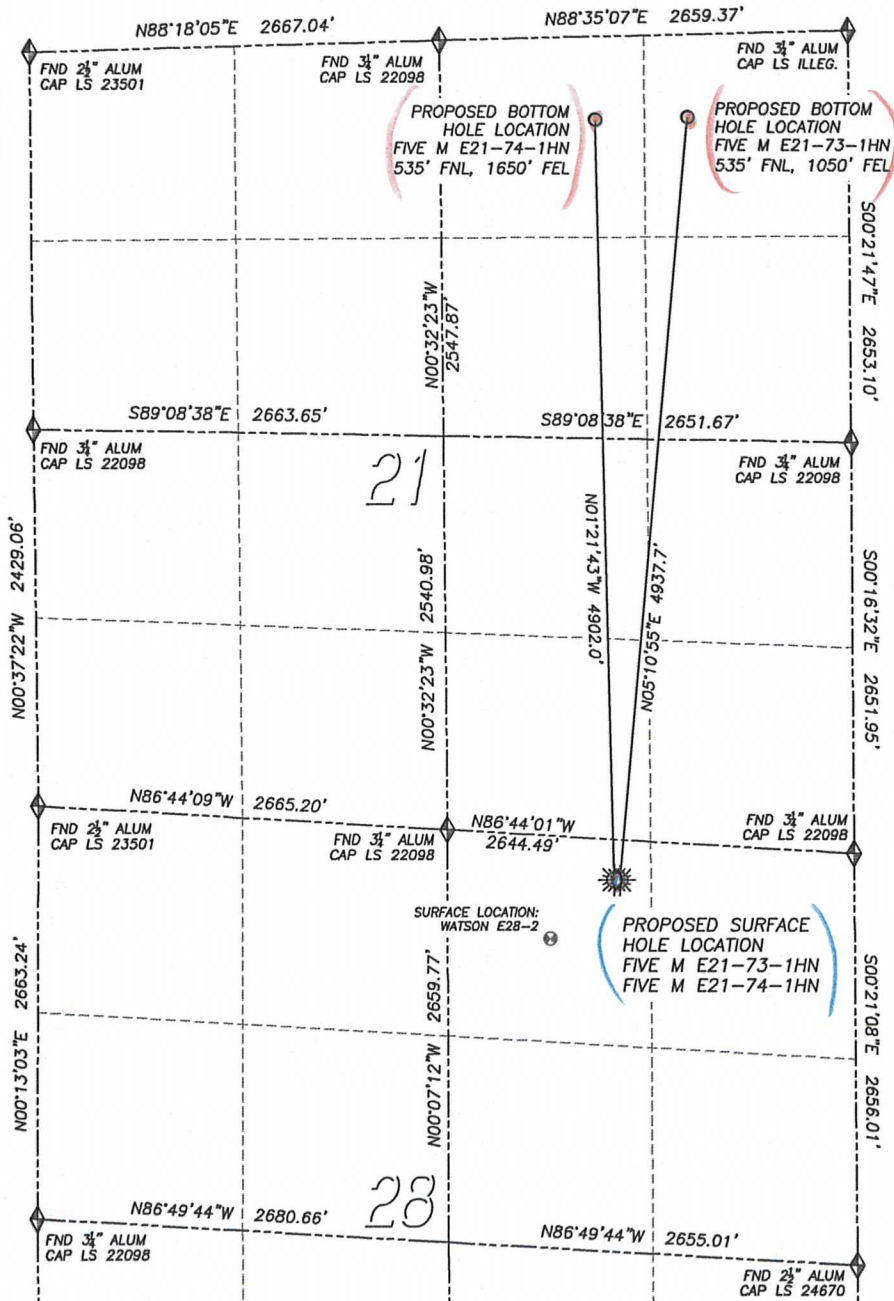


MULTI WELL PAD DIRECTIONAL LAYOUT  
 FIVE M E21-73-1HN & FIVE M E21-74-1HN

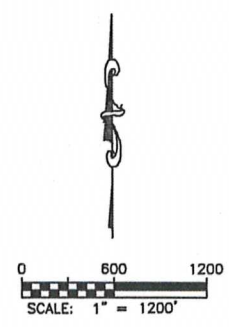
SECTION 28, TOWNSHIP 6 NORTH, RANGE 65 WEST OF THE 6TH PRINCIPAL MERIDIAN



NAD 83 LATITUDE AND LONGITUDE

**FIVE M E21-73-1HN SURFACE HOLE:**  
 LATITUDE: N40.46396°  
 LONGITUDE: W104.66440°  
 ELEVATION: 4704'  
 FOOTAGE: 260' FNL, 1523' FEL  
 PDOP: 1.7  
 QTR/QTR: NW4/NE4  
 PROP LINE: 203'± EAST  
**BOTTOM HOLE:**  
 LATITUDE: N40.47745°  
 LONGITUDE: W104.66281°  
 FOOTAGE: 535' FNL, 1050' FEL  
 OF SECTION 21

**FIVE M E21-74-1HN SURFACE HOLE:**  
 LATITUDE: N40.46396°  
 LONGITUDE: W104.66454°  
 ELEVATION: 4704'  
 FOOTAGE: 260' FNL, 1560' FEL  
 PDOP: 1.8  
 QTR/QTR: NW4/NE4  
 PROP LINE: 230'± NORTH  
**BOTTOM HOLE:**  
 LATITUDE: N40.47741°  
 LONGITUDE: W104.66497°  
 FOOTAGE: 535' FNL, 1650' FEL  
 OF SECTION 21



DALEY LAND SURVEYING, INC. PARKER, CO. 80134 303 953 9841

# MULTI WELL PAD LOCATION DRAWING FIVE M E21-73-1HN & FIVE M E21-74-1HN

SECTION 28, TOWNSHIP 6 NORTH, RANGE 65 WEST OF THE 6TH PRINCIPAL MERIDIAN

