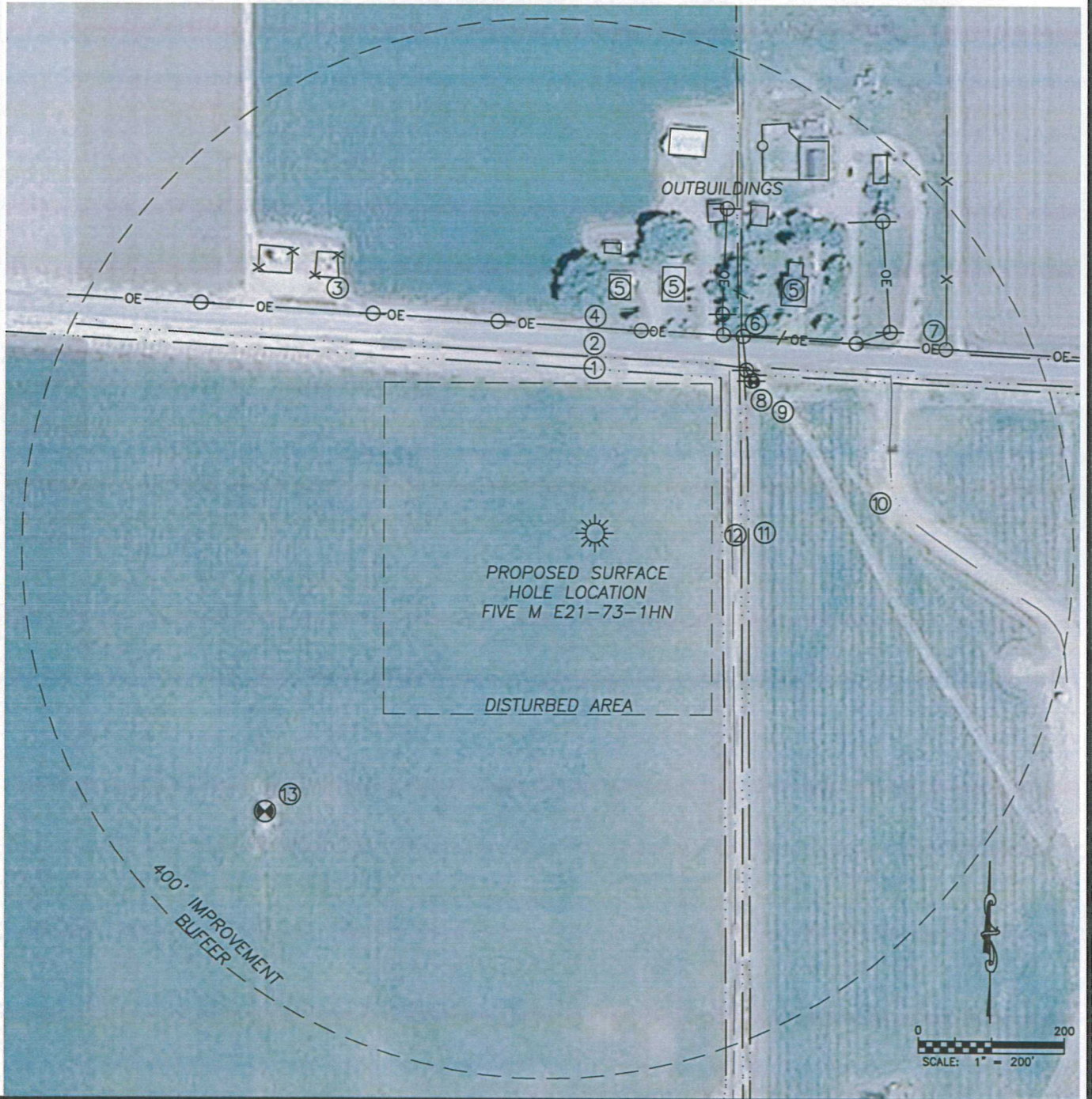


LOCATION DRAWING FIVE M E21-73-1HN

SECTION 28, TOWNSHIP 6 NORTH, RANGE 65 WEST OF THE 6TH PRINCIPAL MERIDIAN



IMPROVEMENTS

- | | |
|--------------------|------------------------|
| 1. IRRIG. DITCH: | 222', 240'± N |
| 2. S EDGE WCR 66: | 247'± N |
| 3. PROD. FACILITY: | 493'± NW |
| 4. O.H. UTILITY: | 279'± N |
| 5. BUILDINGS: | 320', 329', 403'± N-NE |
| 6. WIRE FENCE: | 336'± NE |
| 7. WIRE FENCE: | 546'± NE |

- | | |
|-------------------|---------------------|
| 8. O.H. UTILITY: | 298'± NE |
| 9. IRRIG. WELL: | 300'± NE |
| 10. FIELD ROAD: | 413'± NE |
| 11. IRRIG. DITCH: | 175', 201', 210'± E |
| 12. FIELD ROAD: | 188'± E |
| 13. GAS WELL: | 590'± SW |

DISTANCE TO NEAREST:

- | | |
|-----------------------|----------|
| BUILDING: | 320'± N |
| PUBLIC ROAD: | 247'± N |
| ABOVE GRND UTILITY: | 279'± N |
| RAILROAD (ABANDONED): | 2390'± S |
| PROP. LINE: | 203'± E |