

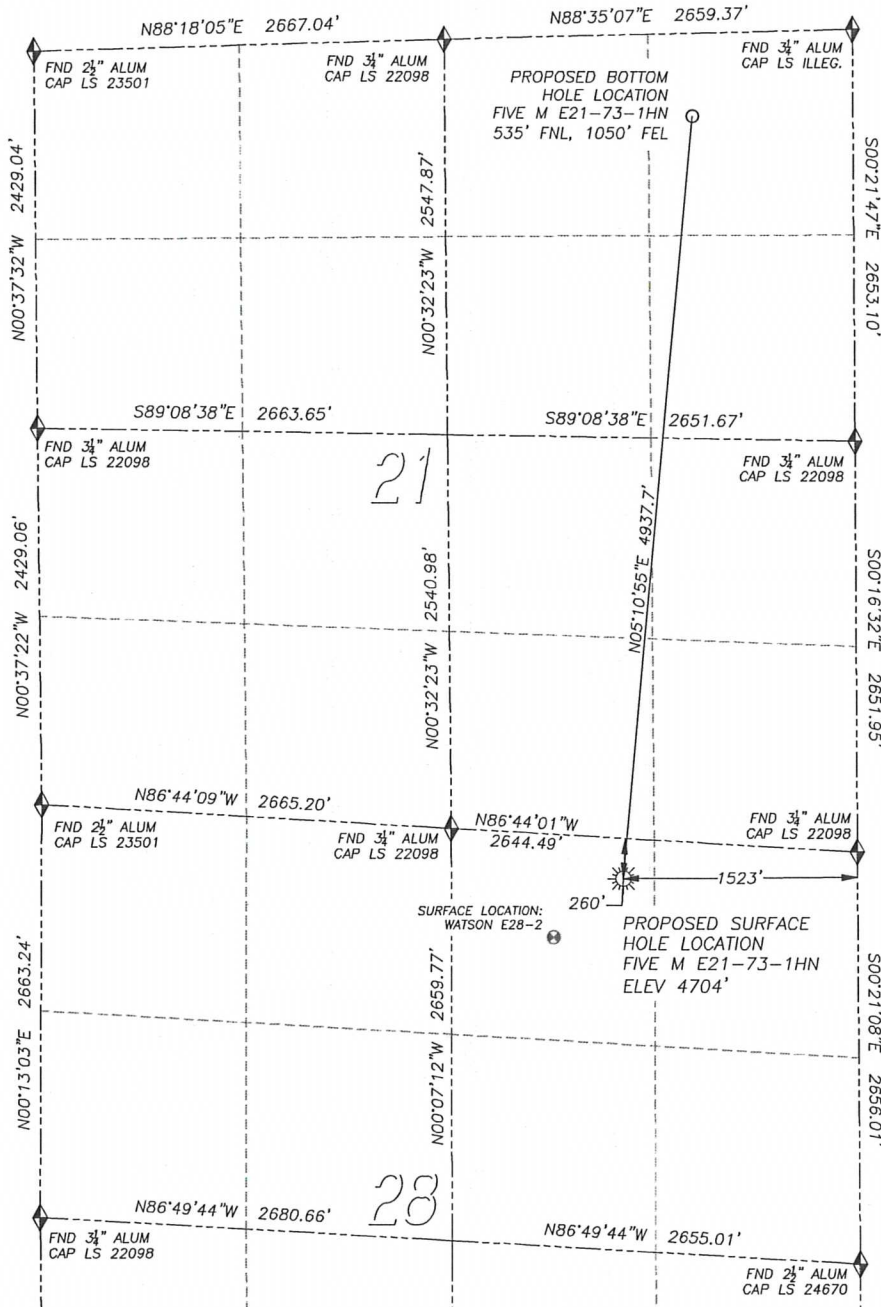
DALEY LAND SURVEYING, INC.

PARKER, CO. 80134

303 953 9841

WELL LOCATION CERTIFICATE FIVE M E21-73-1HN

SECTION 28, TOWNSHIP 6 NORTH, RANGE 65 WEST OF THE 6TH PRINCIPAL MERIDIAN



NAD 83 LATITUDE AND LONGITUDE

FIVE M E21-73-1HN SURFACE HOLE:

LATITUDE: N40.46396°

LONGITUDE: W104.66440°

ELEVATION: 4704'

FOOTAGE: 260' FNL, 1523' FEL

PDOP: 1.7

QTR/QTR: NW4/NE4

PROP LINE: 203'± EAST

BOTTOM HOLE:

LATITUDE: N40.47745°

LONGITUDE: W104.66281°

FOOTAGE: 535' FNL, 1050' FEL
OF SECTION 21

NEAREST EXISTING WELL:

WATSON E28-2 SURFACE HOLE

LATITUDE: N40.46291°

LONGITUDE: W104.66602°

ELEVATION: 4704'

590' SOUTHWEST

LEGEND

- ◆ FOUND MONUMENT AS DESCRIBED
- ☼ PROPOSED WELL
- EXISTING WELL
- BOTTOM HOLE

0 600 1200
SCALE: 1" = 1200'



FOR AND ON BEHALF OF
DALEY LAND SURVEYING INC.,
Robert Daley, PLS 35597

NOTES:

- 1) BEARINGS FOR THIS MAP ARE ASSUMED AND BASED UPON GPS OBSERVATIONS MADE BETWEEN MONUMENTS LOCATED AT THE NORTHEAST CORNER AND EAST QUARTER CORNER OF SECTION 28, T.6N., R.65W.
- 2) HORIZONTAL DATUM IS NAD83.
- 3) VERTICAL DATUM IS NAVD88. ELEVATIONS ARE DERIVED FROM GPS OBSERVATIONS PROCESSED THROUGH OPUS, UTILIZING THE GEIOD09 MODEL.
- 4) SEE LOCATION DRAWING FOR VISIBLE IMPROVEMENTS WITHIN 600' OF PROPOSED SURFACE HOLE LOCATION.
- 5) SURFACE USE: AGRICULTURE.

IN ACCORDANCE WITH A REQUEST FROM NATE McCORKELL OF NOBLE ENERGY INC., DALEY LAND SURVEYING, INC. HAS DETERMINED THE SURFACE LOCATION OF THE FIVE M E21-73-1HN WELL TO BE 260' FNL, 1523' FEL, AS MEASURED AT NINETY (90) DEGREES FROM THE SECTION LINES OF SECTION 28, TOWNSHIP 6 NORTH, RANGE 65 WEST OF THE 6TH PRINCIPAL MERIDIAN, WELD COUNTY, COLORADO. THE BOTTOM HOLE LOCATION, PROVIDED BY THE CLIENT, IS TO BE 535' FNL, 1050' FEL OF SECTION 21, T.6N., R.65W.

I HEREBY CERTIFY THAT THIS WELL LOCATION CERTIFICATE WAS PREPARED BY ME OR UNDER MY DIRECT SUPERVISION, THAT THE WORK WAS COMPLETED ON 6/30/2011 FOR AND ON BEHALF OF NOBLE ENERGY, INC., AND THAT THIS MAP DOES NOT REPRESENT A BOUNDARY SURVEY, IT IS NOT A LAND SURVEY PLAT OR AN IMPROVEMENT SURVEY PLAT AND IT IS NOT TO BE RELIED UPON FOR THE ESTABLISHMENT OF FENCE, BUILDING OR OTHER FUTURE IMPROVEMENT LINES.

NOTICE: According to Colorado law you MUST commence any legal action based upon any defect in this W.L.C. within three years after you first discover such defect. In no event may any action based upon any such defect in this W.L.C. be commenced more than ten years from the date of the certification shown herein.

303 953 9841

SECTION 28, TOWNSHIP 6 NORTH, RANGE 65 WEST OF THE 6TH PRINCIPAL MERIDIAN

Diagram illustrating the well spacing for proposed wells. The diagram shows two proposed wells, labeled "FIVE M E21-74-1HN" and "FIVE M E21-73-1HN", spaced 37.5 feet apart. The well spacing is indicated by a dimension line labeled "WELL SPACING 37.5' SPACING BETWEEN PROPOSED WELLS". The diagram also shows a "PAD DETAIL" and a "WCR 66" line.