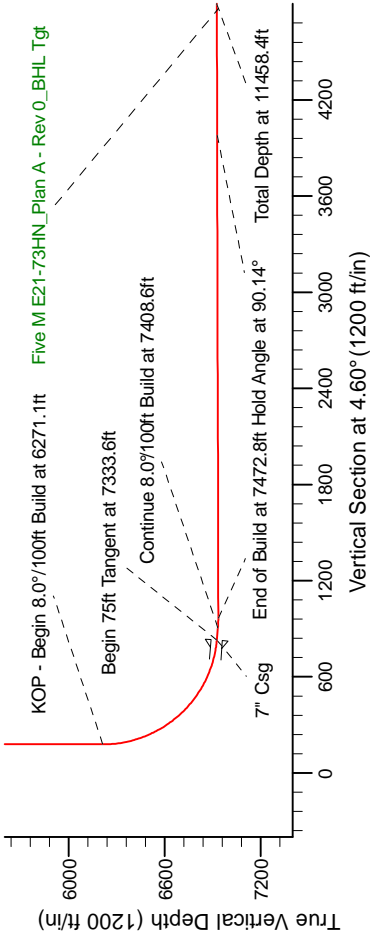
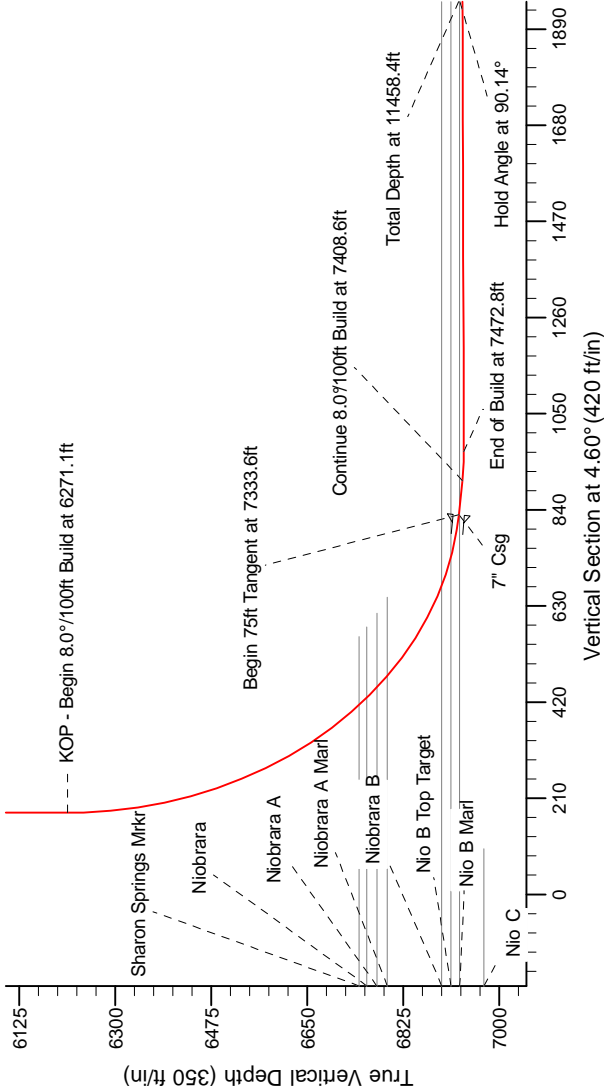


Project: Weld County Colorado (NAD 83)
Site: Sec. 21, T6N, R65W
Well: Five M E21-73-1HN
Wellbore: Plan A - Rev 0 (PERMITTING PLAN ONLY)
Design: Plan A - Rev 0 Proposal

Noble Energy

SECTION DETAILS

Sec	MD	Inc	Azi	TVD	+N/-S	+E/-W	Dleg	TFace	VSect	Target
1	0.0	0.00	0.00	0.0	0.0	0.0	0.00	0.00	0.0	
2	1500.0	0.00	0.00	1500.0	0.0	0.0	0.00	0.00	0.0	
3	2099.9	15.00	73.40	2093.0	22.3	74.8	2.50	73.40	28.2	
4	3404.0	15.00	73.40	3352.8	118.7	398.2	0.00	0.00	150.3	
5	4003.9	0.00	0.00	3945.8	141.0	473.0	2.50	180.00	178.5	
6	6271.1	0.00	0.00	6213.0	141.0	473.0	0.00	0.00	178.5	
7	7333.6	85.00	359.08	6926.5	794.7	462.5	8.00	359.08	829.2	
8	7408.6	85.00	359.08	6933.0	869.4	461.3	0.00	0.00	903.6	
9	7472.9	90.14	359.08	6935.8	933.6	460.3	8.00	0.00	967.5	
10	11458.4	90.14	359.07	6925.9	4918.6	396.0	0.00	-64.78	4934.5	Five M E21-73-1HN_Plan A - Rev 0_BHL Tgt



T

G

M

Magnetic Model: GRF200510

Date: 9/7/2011

Inclination: 5.20°

Dip Angle: 67.12°

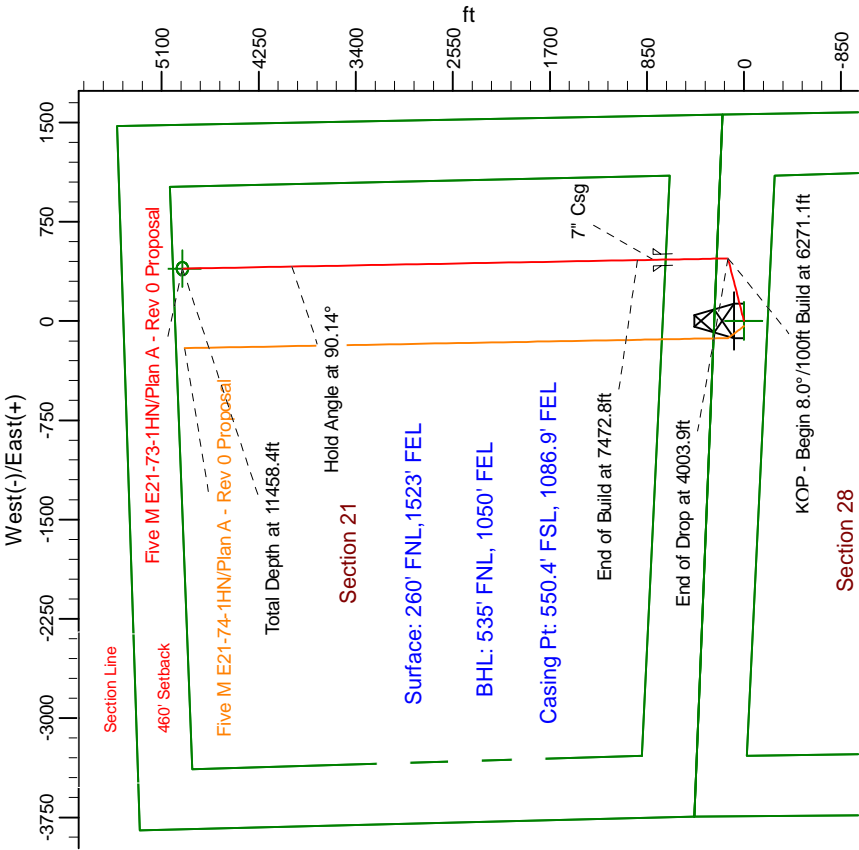
Field Strength: 53174.8

Grid North is 0.94° East of True North (Grid Convergence)

Magnetic North is 5.20° East of Grid North (Magnetic Convergence)

To convert a Magnetic Direction to a True Direction, Add 5.20° East

To convert a Magnetic Direction to a Grid Direction, Add 6.14° East



WELL DETAILS: Five M E21-73-1HN(NAD83 Geodetic System)			
Northing	Ground Level:	4704.0	Longitude
430669.98	Easting	985268.05	Latitude
		40°27'50.256 N	104°39'51.840 W
Plan: Plan A - Rev 0 Proposal (Five M E21-73-1HN/Plan A - Rev 0 (PERMITTING PLAN ONLY))			
Created By: Erasmo Mendoza		Date: 17:56, September 07 2011	