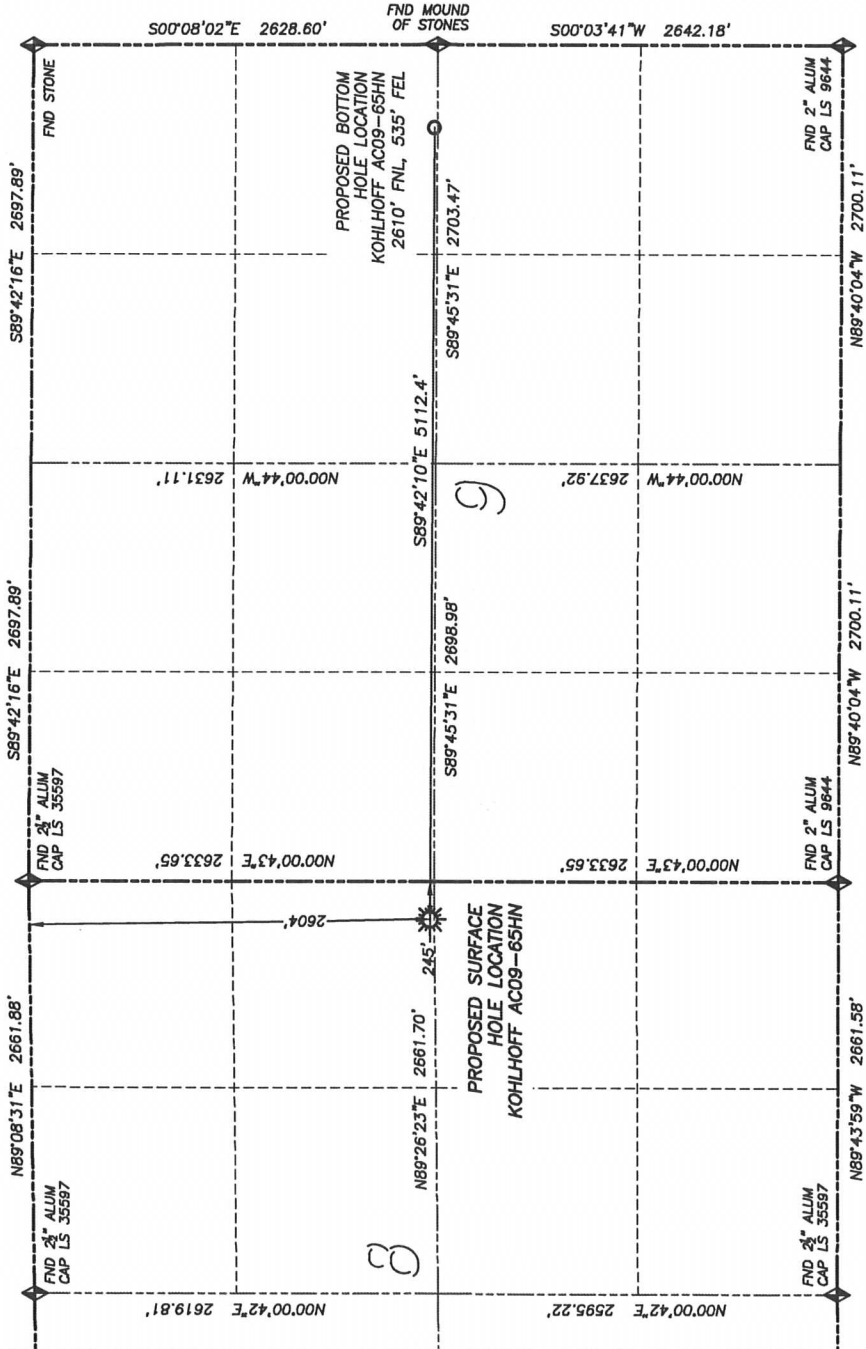


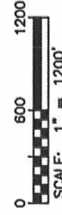
DALEY LAND SURVEYING, INC. PARKER, CO. 80134 303 953 9841  
**WELL LOCATION CERTIFICATE - KOHLHOFF AC09-65HN**  
 SECTION 8, TOWNSHIP 7 NORTH, RANGE 63 WEST OF THE 6TH PRINCIPAL MERIDIAN



**NAD 83 LATITUDE AND LONGITUDE**  
 KOHLHOFF AC09-65HN SURFACE HOLE:  
 LATITUDE: N40.58878°  
 LONGITUDE: W104.45226°  
 ELEVATION: 4874'  
 FOOTAGE: 2604' FNL, 245' FEL  
 PDOP: 1.9  
 QTR/QTR: SE4/NE4  
 PROP LINE: 245'± EAST  
 BOTTOM HOLE:  
 LATITUDE: N40.58871°  
 LONGITUDE: W104.43386°  
 FOOTAGE: 2610' FNL, 535' FEL  
 OF SECTION 9  
**NEAREST EXISTING WELL:**  
 NO WELLS IN THIS SECTION

**LEGEND**

- FOUND MONUMENT AS DESCRIBED
- PROPOSED WELL
- EXISTING WELL
- BOTTOM HOLE
- ABANDONED WELL



FOR AND ON BEHALF OF  
 DALEY LAND SURVEYING, INC.,  
 Robert Daley, PLS 35597






- NOTES:**
- 1) BEARINGS FOR THIS MAP ARE ASSUMED AND BASED UPON GPS OBSERVATIONS MADE BETWEEN MONUMENTS LOCATED AT THE SOUTHEAST CORNER AND NORTHEAST CORNER CORNER OF SECTION 8, T.7N., R.63W.
  - 2) HORIZONTAL DATUM IS NAD83.
  - 3) VERTICAL DATUM IS NAVD83 AND ORIGINATES FROM THE LOCAL C.O.R.S. NETWORK, UTILIZING THE GEOID09 MODEL.
  - 4) SEE LOCATION DRAWING FOR VISIBLE IMPROVEMENTS WITHIN 400' OF PROPOSED DISTURBED AREA.
  - 5) SURFACE USE: PASTURE.

IN ACCORDANCE WITH A REQUEST FROM NATE MCCORKELL OF NOBLE ENERGY INC., DALEY LAND SURVEYING, INC. HAS DETERMINED THE SURFACE LOCATION OF THE KOHLHOFF AC09-65HN WELL TO BE 2604' FNL, 245' FEL, AS MEASURED AT NINETY (90) DEGREES FROM THE SECTION LINES OF SECTION 8, TOWNSHIP 7 NORTH, RANGE 63 WEST OF THE 6TH PRINCIPAL MERIDIAN, WELD COUNTY, COLORADO. THE BOTTOM HOLE LOCATION, PROVIDED BY THE CLIENT, IS TO BE 2610' FNL, 535' FEL OF SECTION 9, T.7N., R.63W.

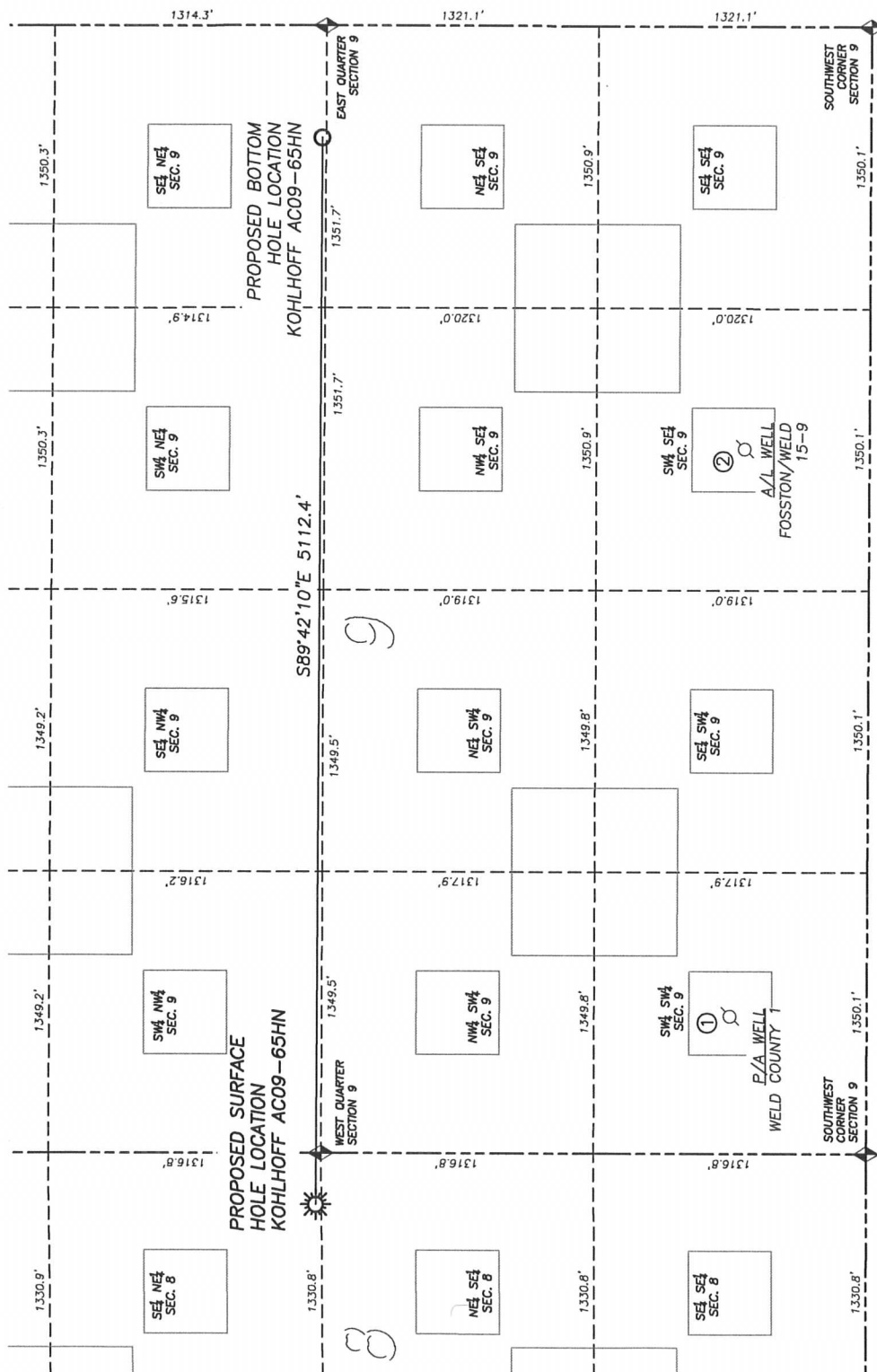
I HEREBY CERTIFY THAT THIS WELL LOCATION CERTIFICATE WAS PREPARED BY ME OR UNDER MY DIRECT SUPERVISION, THAT THE WORK WAS COMPLETED ON 9/26/2011 FOR AND ON BEHALF OF NOBLE ENERGY, INC., AND THAT THIS MAP DOES NOT REPRESENT A BOUNDARY SURVEY, IT IS NOT A LAND SURVEY PLAT OR AN IMPROVEMENT SURVEY PLAT AND IT IS NOT TO BE RELIED UPON FOR THE ESTABLISHMENT OF FENCE, BUILDING OR OTHER FUTURE IMPROVEMENT LINES.

SITE SKETCH - KOHLHOFF AC09-65HN

**LEGEND**

	FOUND MONUMENT AS DESCRIBED
	PROPOSED WELL
	EXISTING WELL
	BOTTOM HOLE
	ABANDONED WELL

NOTES:  
1. THIS DOES NOT REPRESENT  
A BOUNDARY SURVEY  
2. HORIZONTAL DATUM IS NAD83  
3. VERTICAL DATUM IS NAVD88  
AND ORIGINATES FROM THE  
LOCAL C.O.R.S. NETWORK,  
UTILIZING THE GEOID09  
MODEL.



①	<u>P/A WELL</u> WELD COUNTY, 1	SW/SW SEC. 9 660' FSL, 660' FWL LAT. N40.58313° LONG. W104.44889° EL. 4847'	LOCATION INFORMATION FROM COGCC DATABASE
②	<u>A/L WELL</u> EGGSON/WELD, 15-9	SW/SE SEC. 9 601' FSL, 2020' FWL LAT. N40.58299° LONG. W104.43926° EL. UNKNOWN	LOCATION INFORMATION FROM COGCC DATABASE