

OPERATOR: WIEPKING - FULLERTON ENERGY LLC
WELL NAME: MAHALO 2

TEST NO: 1
TICKET NO: 2872

Contractor Murfin Drilling
Rig No. 25
Spot NE/NW
Sec 29
Twp 10 S
Rng 55 W
Field Great Plains
County Lincoln
State Colorado
Elevation 5225' KB - 5215' GL
Formation Lansing

Surface Choke 1"
Bottom Choke 5/8"
Hole Size 7 7/8"
Core Hole Size
DP Size & Wt 4 1/2" 16.60
Wt Pipe
ID of DC 2 3/8"
Length of DC 542'
Total Depth 6990'
Type of Test Open Hole Dst
Interval 6928'- 6990'

Mud Type Chemical/Gel
Weight 9.0
Viscosity 62
Water Loss 8.8
Filter Cake
RW 3.5 @ 74 Deg F
Chlorides 1,470 Ppm

Co. Rep. Ralph Stansbury
Tester Mark Green

Pipe Recovery:

4525' Gas above fluid
200' Total fluid = 1.10 bbl., consisting of:
20' Gas cut mud = 0.11 bbl.
180' Gassy mud w/trace of oil = 0.99 bbl.

Properties:

Top Rw: 2.6 @ 64 deg F/2,309 ppm

Downhole Sampler:

Pressure in Sampler 1150 psig
Volume of Sampler 2050 cc
Volume of Sample 700 cc
Oil: -- cc
Water: 0 cc
Mud: Mud emulsified w/oil 700 cc
Gas: 6.98 cu ft
Other: 0

Rw:
Chlorides:
Gas/Oil Ratio
Gravity API @ 60 Deg F

Surface blow:

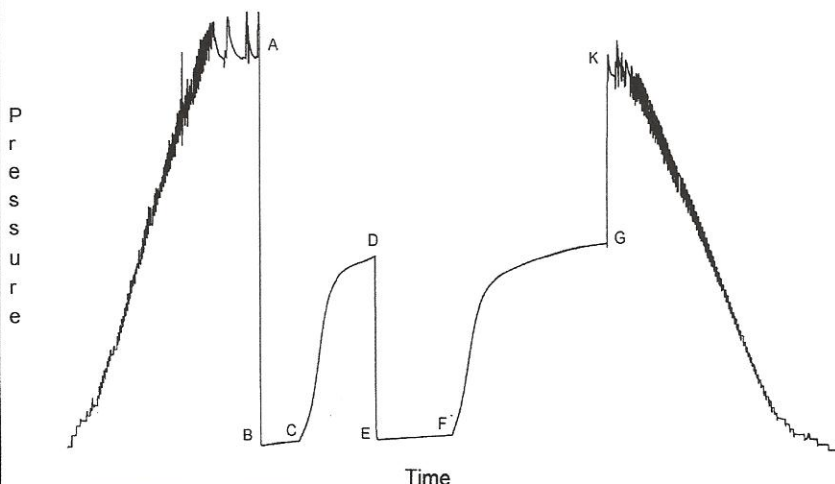
Pre-Flow: Began with a weak intermittent surface blow; began to increase after 20 minutes to 8" at 24 minutes, bottom of bucket at 27 minutes and remained thru flow period.

Flow: Began with a bottom of bucket blow, increased to 13.0 oz at 7 minutes; decreased to 10.0 oz at 10 minutes and remained for 30 minutes; slowly decreased to 6.0 oz at end of flow period.

Opened Tool @ 22:05 hrs on 07/10/2011

	Reported	Corrected	
Flow 1	30	29	min
Shut-in 1	60	60	min
Flow 2	60	59	min
Shut-in 2	120	120	min

Downhole Pressure Chart



Downhole Pressure Data

Recorder Type JMCO Memory Recorder
No. 30024 Cap 10000 psi
Depth 6909 ft.
Inside X Outside
Psi(a) Deg (f)
Initial Hydrostatic [A] 3182
Final Hydrostatic [K] 3070
Initial Flow 1 [B] 32 162
Final Flow 1 [C] 67 164
Initial Flow 2 [E] 82 166
Final Flow 2 [F] 124 168
Shut-in 1 [D] 1574 166
Shut-in 2 [G] 1673 170
Maximum Temperature 170

OPERATOR: WIEPKING - FULLERTON ENERGY LLC
WELL NAME: MAHALO 2

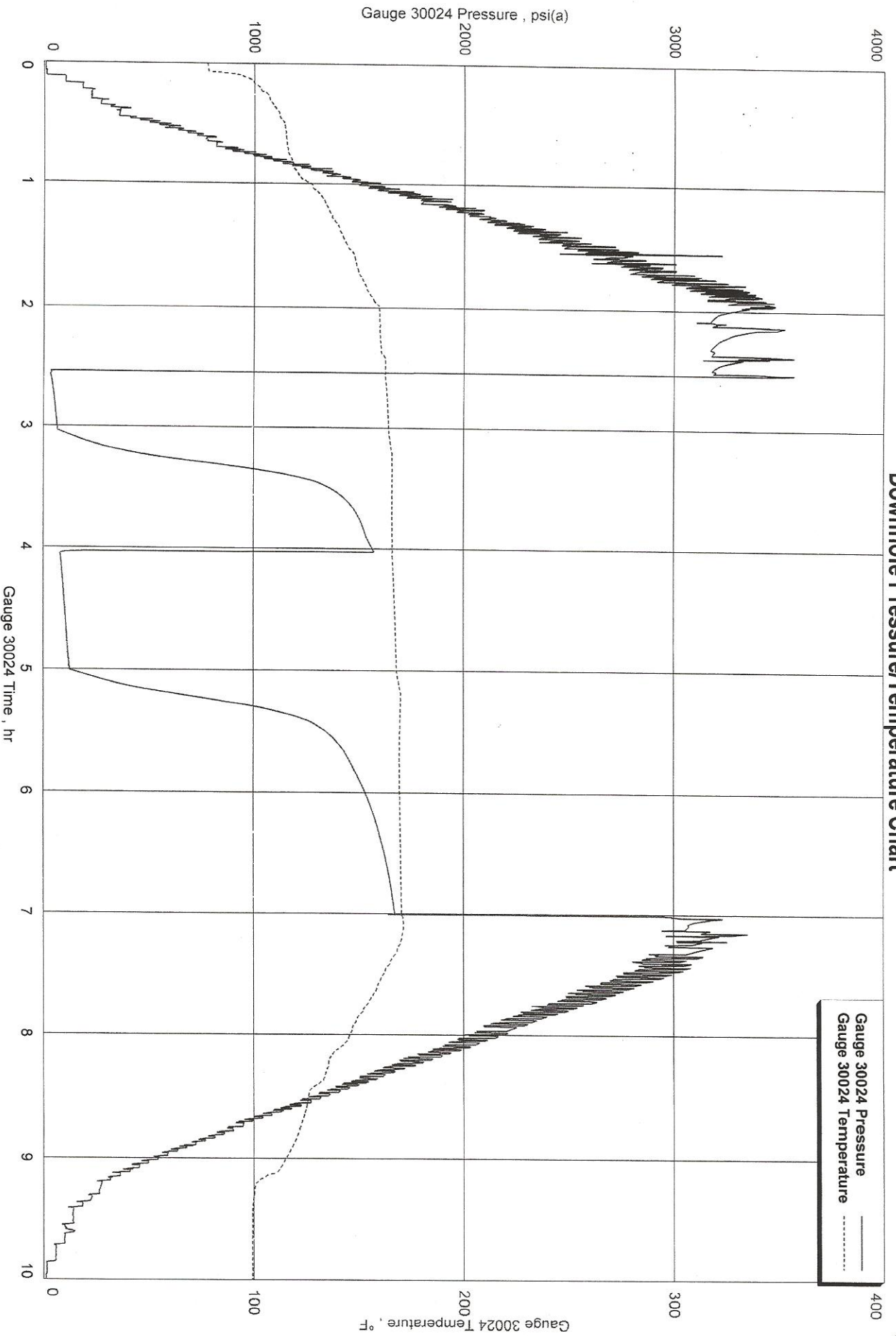
FORMATION: LANSING
INTERVAL: 6928 - 6990'

TEST NO: 1
DATE: 07/10/2011

Wiepking - Fullerton Energy LLC
Interval: 6928' - 6990'

Downhole Pressure/Temperature Chart

Mahalo 2, Dst 1
Formation: Lansing



Wiepking - Fullerton Energy LLC
Interval: 6928' - 6990'

Diagnostic Plot - Shut In 1

Radial

Mahalo 2, Dst 1
Formation: Lansing

1900

Radial Solution

$p^* 1886.5 \text{ psi(a)}$

1700

p^* - Questionable

1500

1300

1100

900

700

500

300

100

$p \text{ (psi(a))}$

10²

9

8

7

6

5

4

3

2

1

0

0

0

0

0

0

0

0

0

0

0

0

0

0

0

0

0

0

0

0

0

0

0

0

0

0

0

0

0

0

0

0

0

0

0

0

0

0

0

0

0

0

0

0

0

Radial Horner Time $((t_c + \Delta t) / \Delta t)$ (h)

\circ pdata

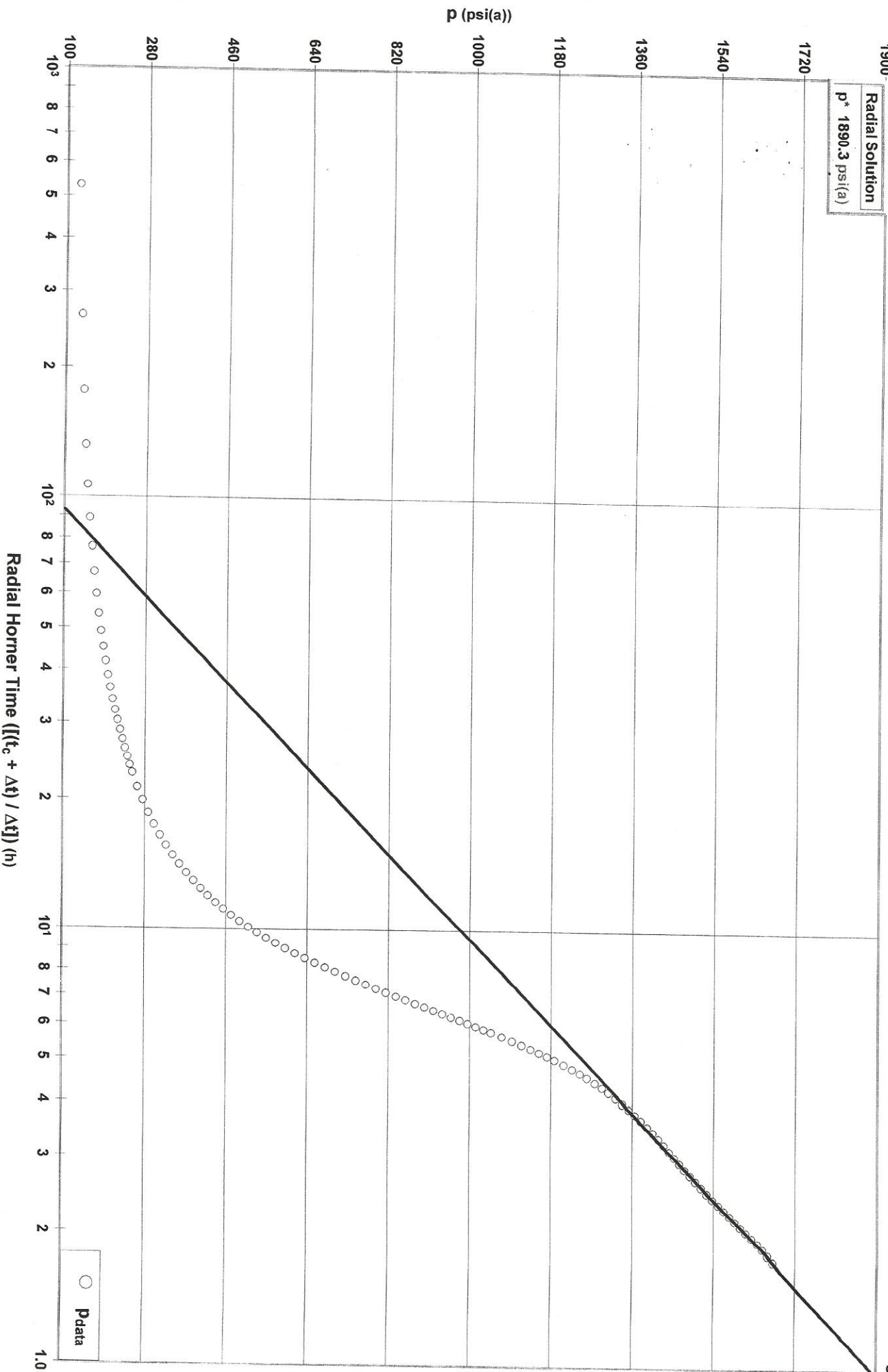
Wiepking - Fullerton Energy LLC
Interval: 6928' - 6990'

Diagnostic Plot - Shut In 2

Radial

Mahalo 2, Dst 1
Formation: Lansing

Radial Solution
 $p^* 1890.3 \text{ psi(a)}$



Wiepking - Fullerton Energy LLC
Interval: 6928' - 6990'

Diagnostic Plot - Shut In 2

Typecurve

Mahalo 2, Dst 1
Formation: Lansing

