

Cement Bond Log

Company		Pioneer Natural Resources	
Well	Gremlin 23-35		
Field	Purgatorie River		
County	Las Animas	State	Colorado
Location:	2286FSL & 1774FWL		Other Services
Permanent Datum	SEC 35	TWP 32S	RGE 66W
Log Measured From	Ground Level	Elevation	7154'
Drilling Measured From	Kelly Bushing 4' AGL	Elevation	K.B. 7158 D.F. ----- G.L. 7154
Date	11-07-11		
Run Number	one		
Depth Driller	2022		
Depth Logger	1970		
Bottom Logged Interval	1964		
Top Log Interval	Surface		
Open Hole Size	7 7/8		
Type Fluid	water		
Density / Viscosity	///		
Max. Recorded Temp.	///		
Estimated Cement Top	240		
Time Well Ready	07:20 A.M.		
Time Logger on Bottom	07:45 A.M.		
Equipment Number	T601		
Location	Trinidad		
Recorded By	T. Patterson		
Witnessed By	C. Adam		
Borehole Record		Tubing Record	
Run Number	Bit	From	To
		Size	Weight
			From
			To
Casing Record	Size	Wgt/Ft	Top
Surface String	8 5/8	24	00'
Prot. String			
Production String	5 1/2	17	00'
Liner			TD

<<< Fold Here >>>

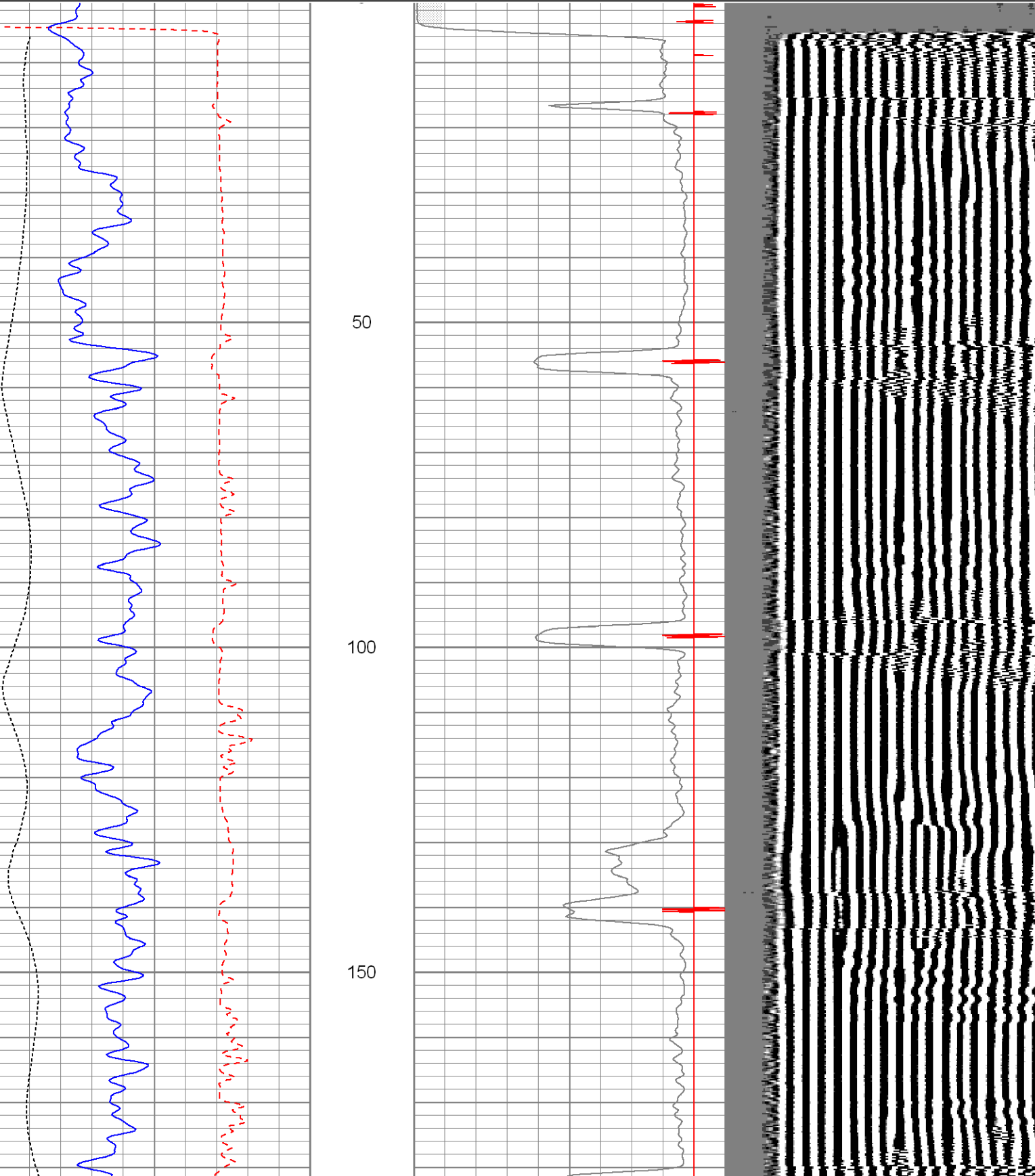
All interpretations are opinions based on inferences from electrical or other measurements and we cannot and do not guarantee the accuracy or correctness of any interpretation, and we shall not, except in the case of gross or willful negligence on our part, be liable or responsible for any loss, costs, damages, or expenses incurred or sustained by anyone resulting from any interpretation made by any of our officers, agents or employees. These interpretations are also subject to our general terms and conditions set out in our current Price Schedule.

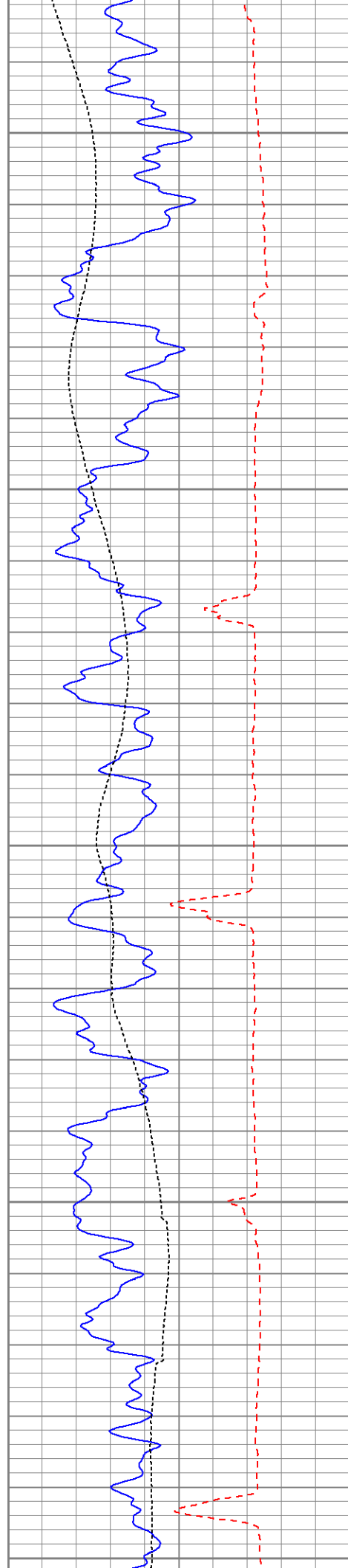
Comments

Main Pass (1000 PSI)
 Directions:
 up burrow stay left of post office follow main road. stay right at the y, first left to location. if u reach quantsta hut you went to far.

Database File: gremlin 23-35cbl.db
Dataset Pathname: pass6
Presentation Format: cbl dig
Dataset Creation: Mon Nov 07 09:11:35 2011 by Log SCH 110722
Charted by: Depth in Feet scaled 1:240

440	TT3 (usec)	220	0	AMP3 (mV)	100	200	Variable Density	1200
0	GR (GAPI)	200	18	CCL	-2			
0	DEVI (°)	10						





200

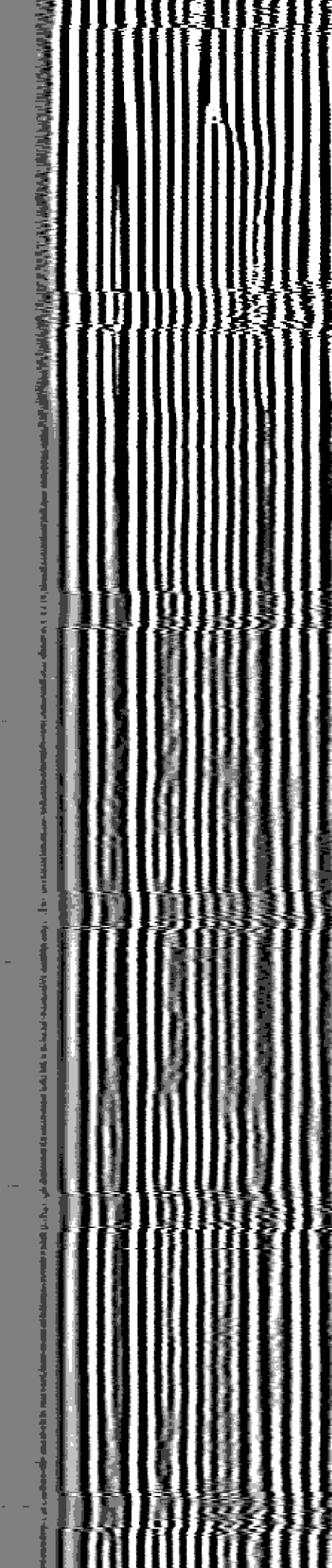
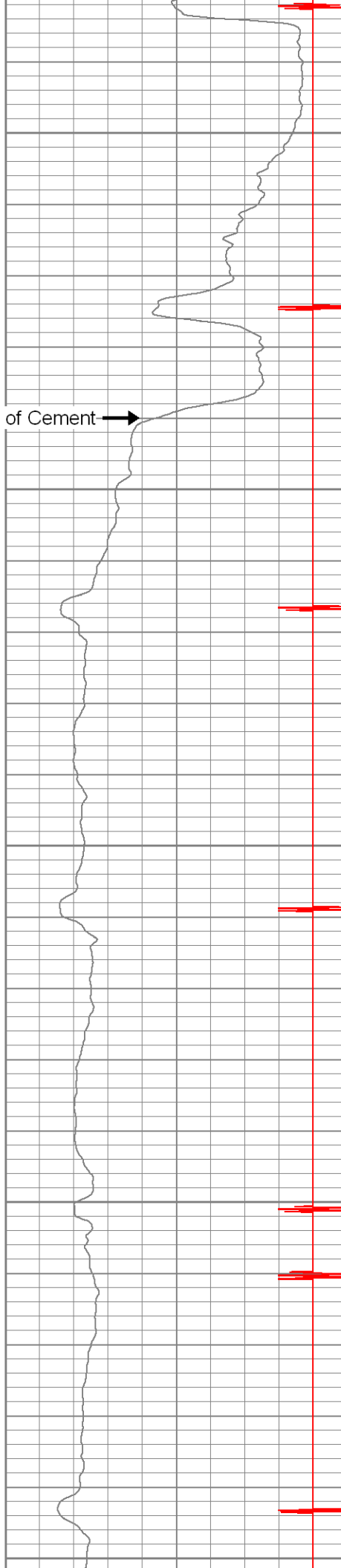
250

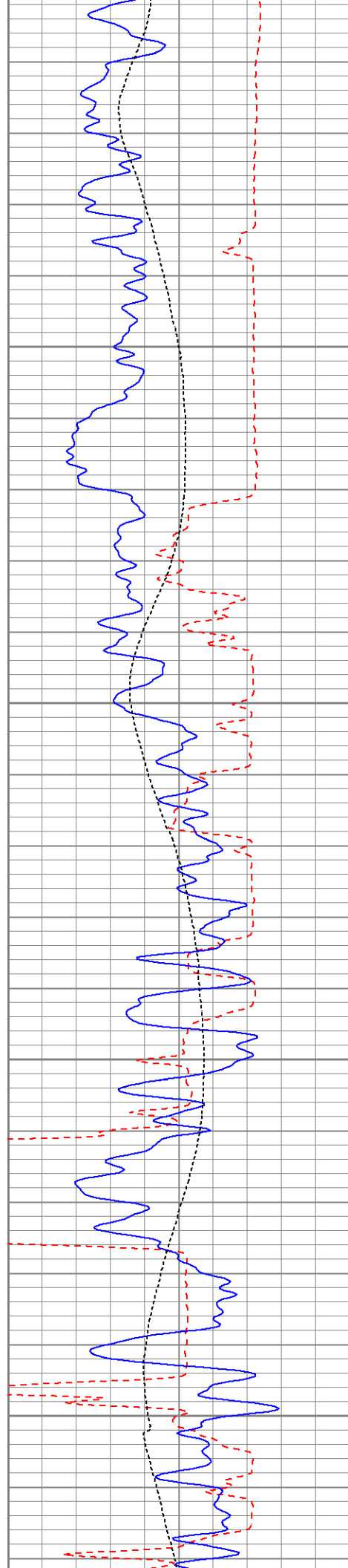
300

350

400

Top of Cement →



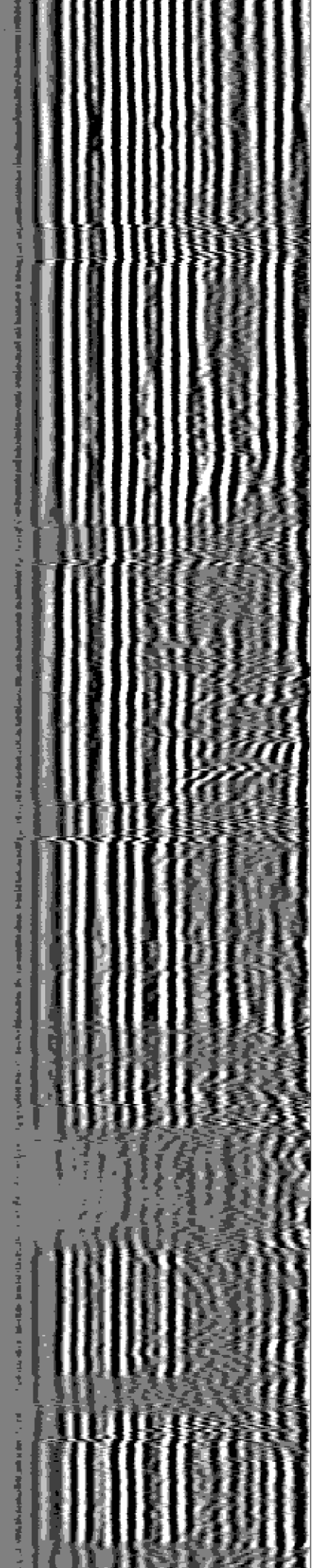


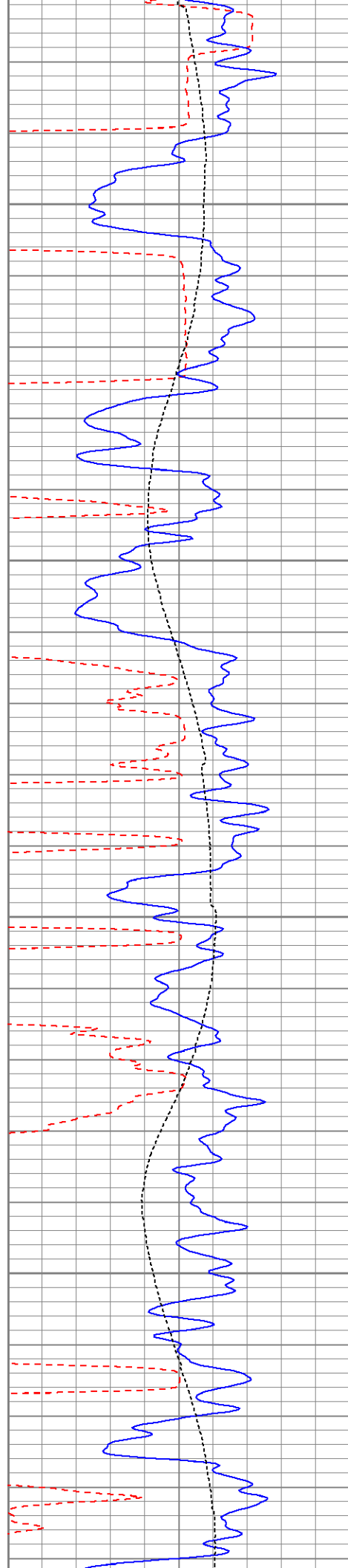
450

500

550

600



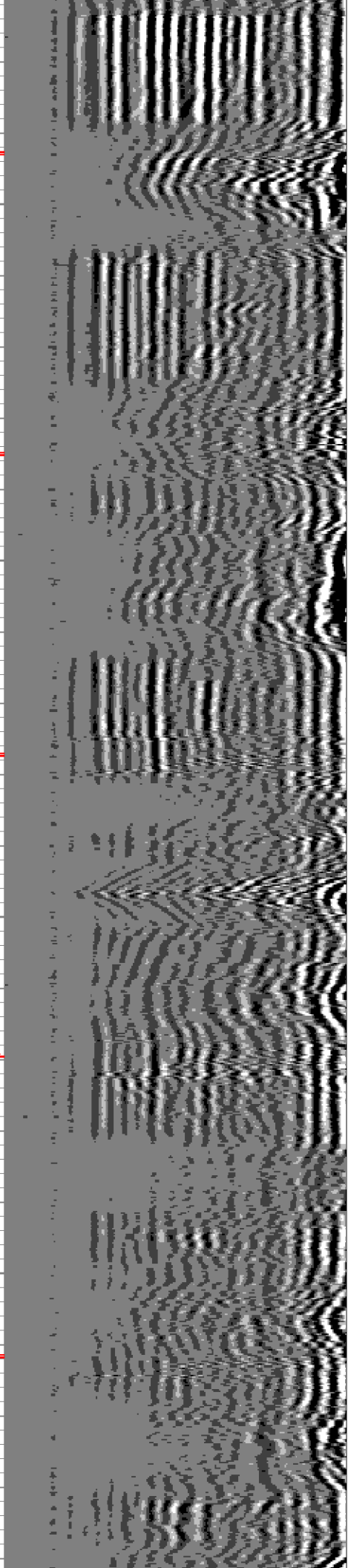
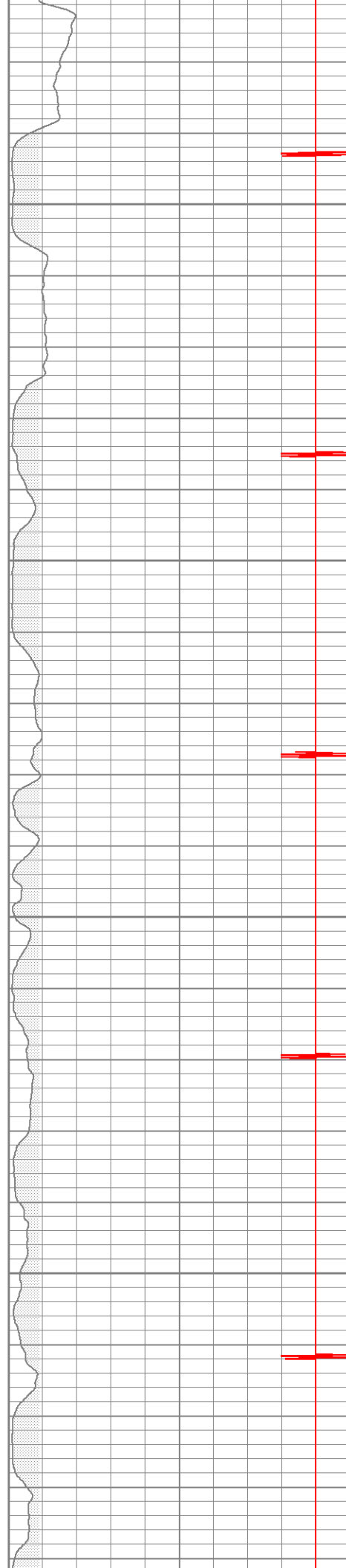


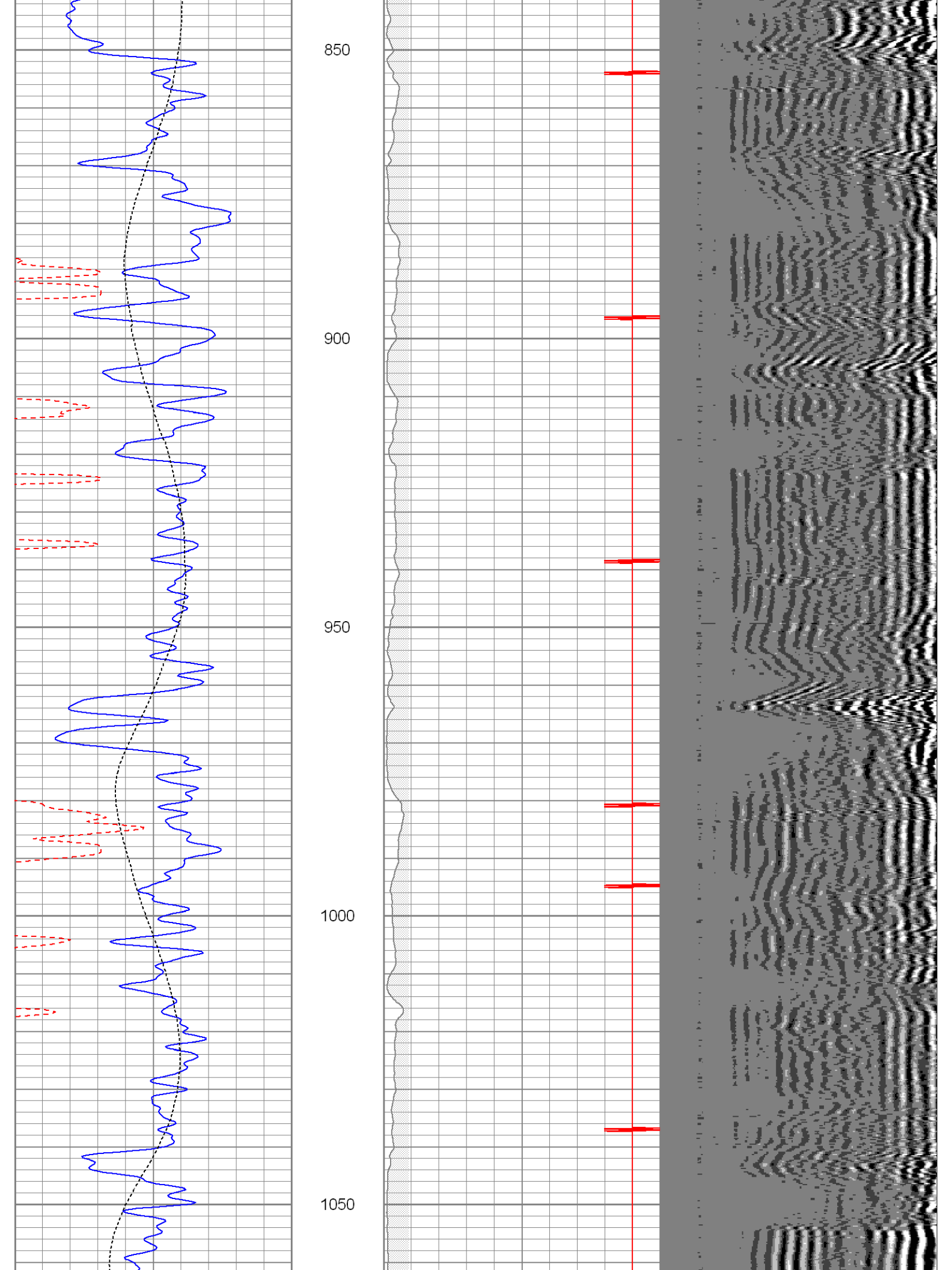
650

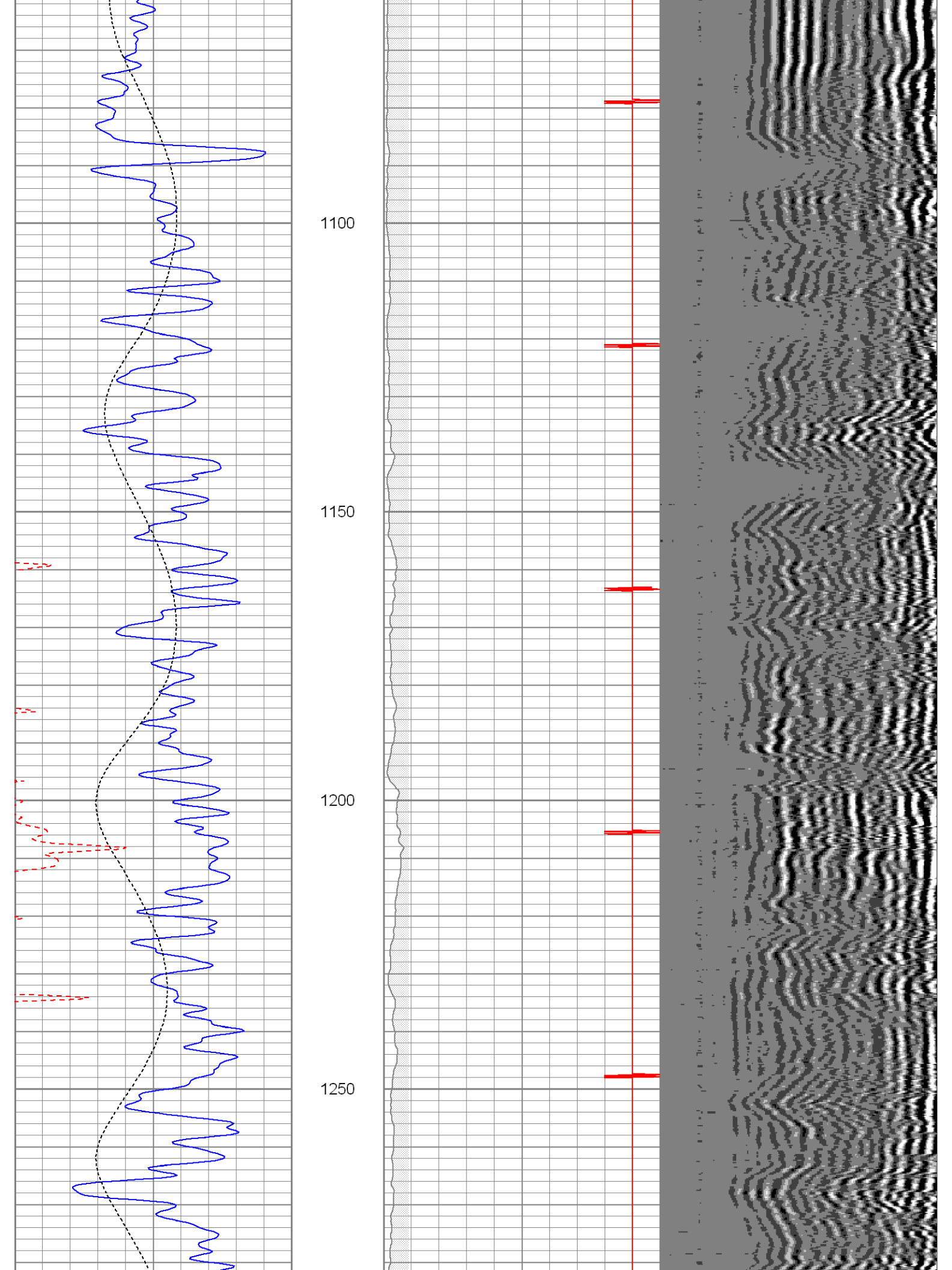
700

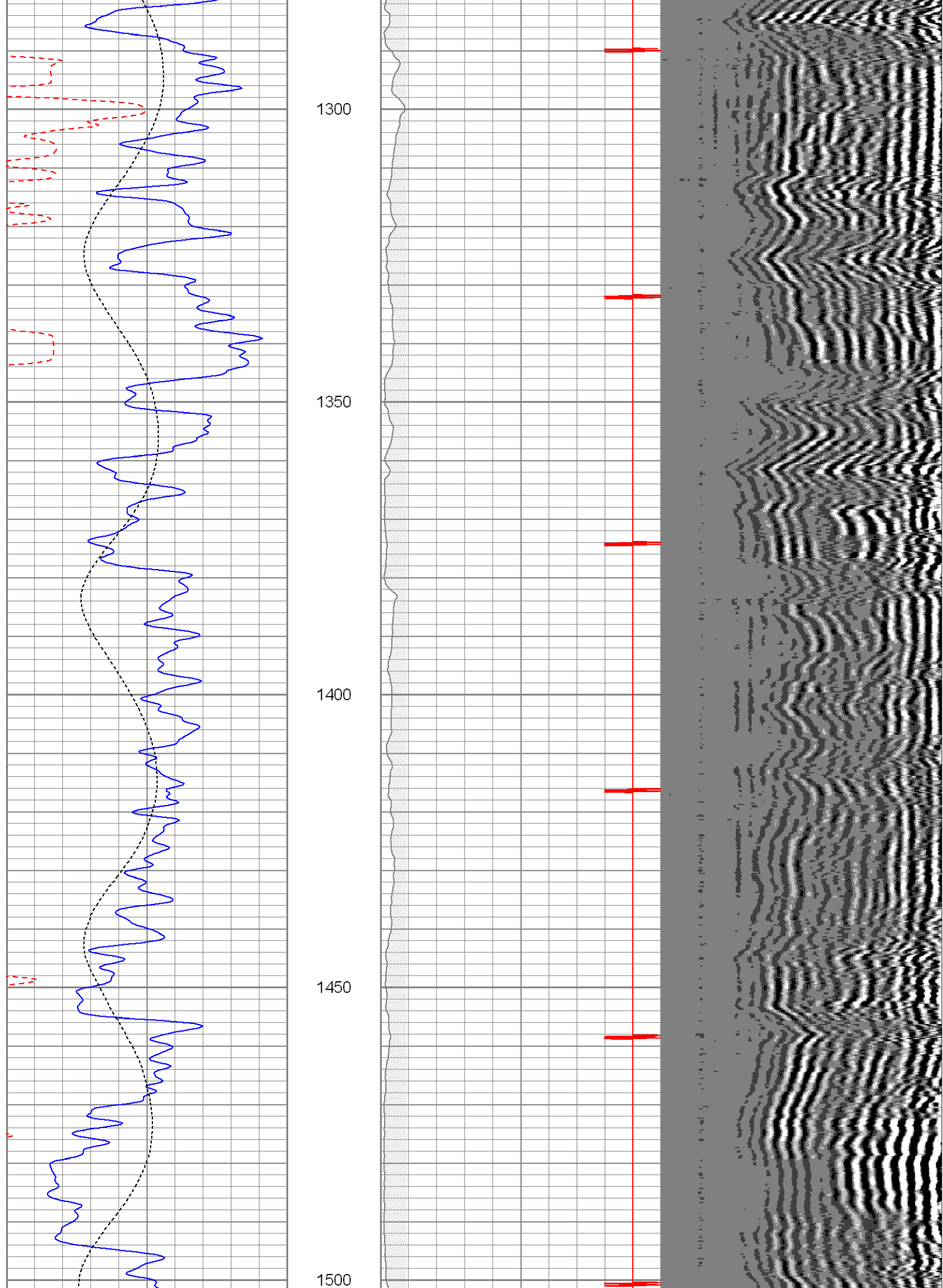
750

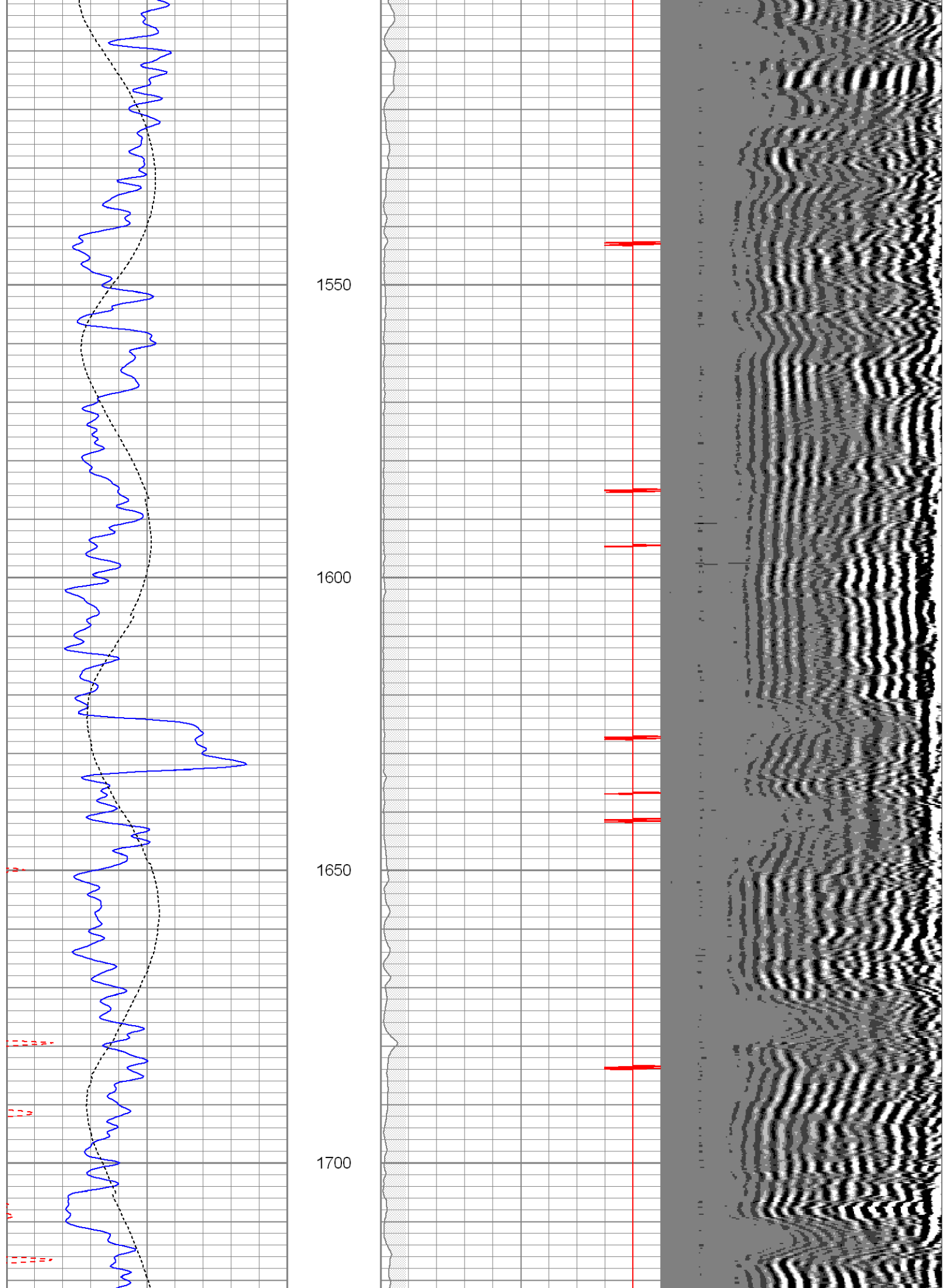
800

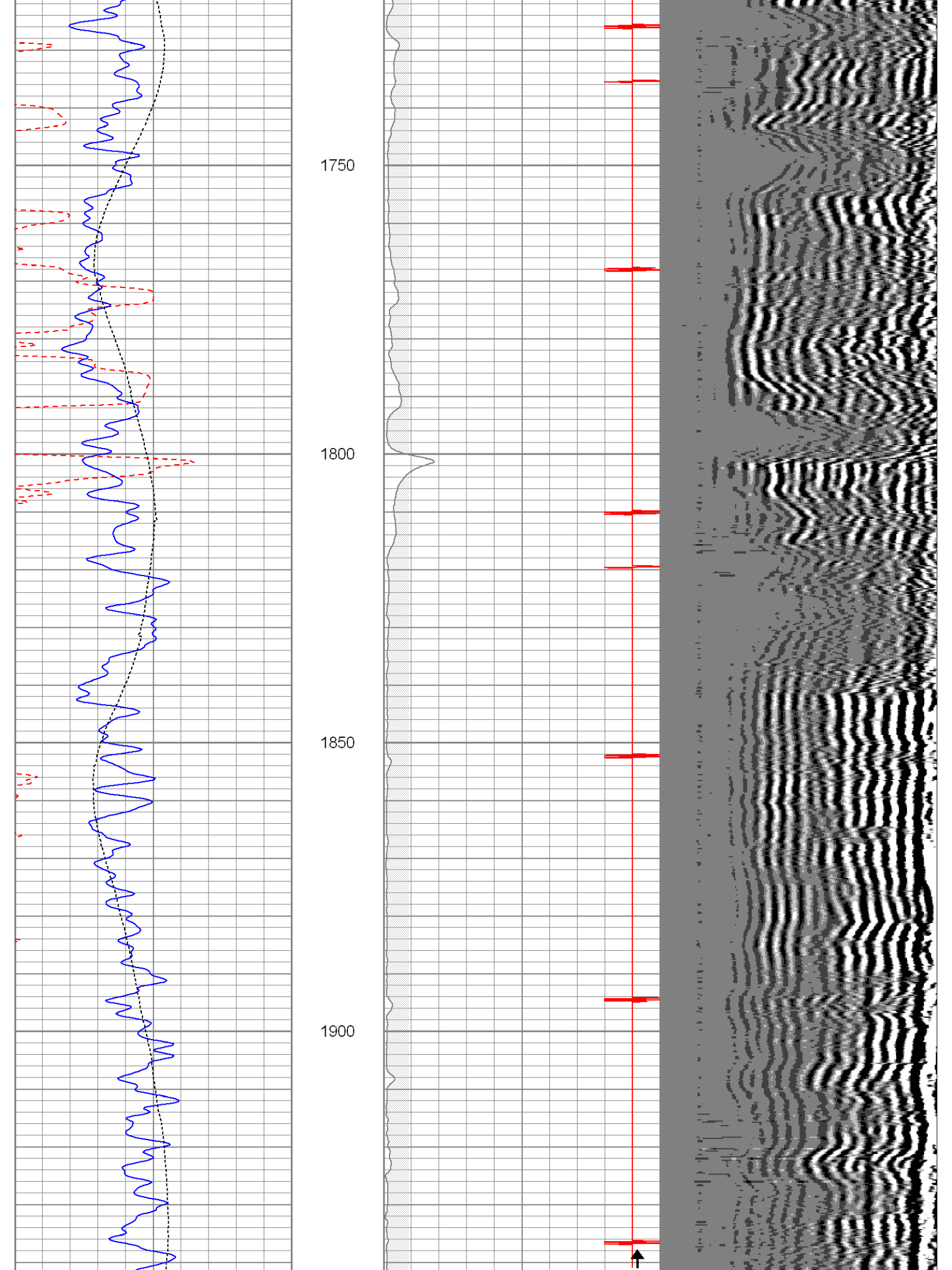


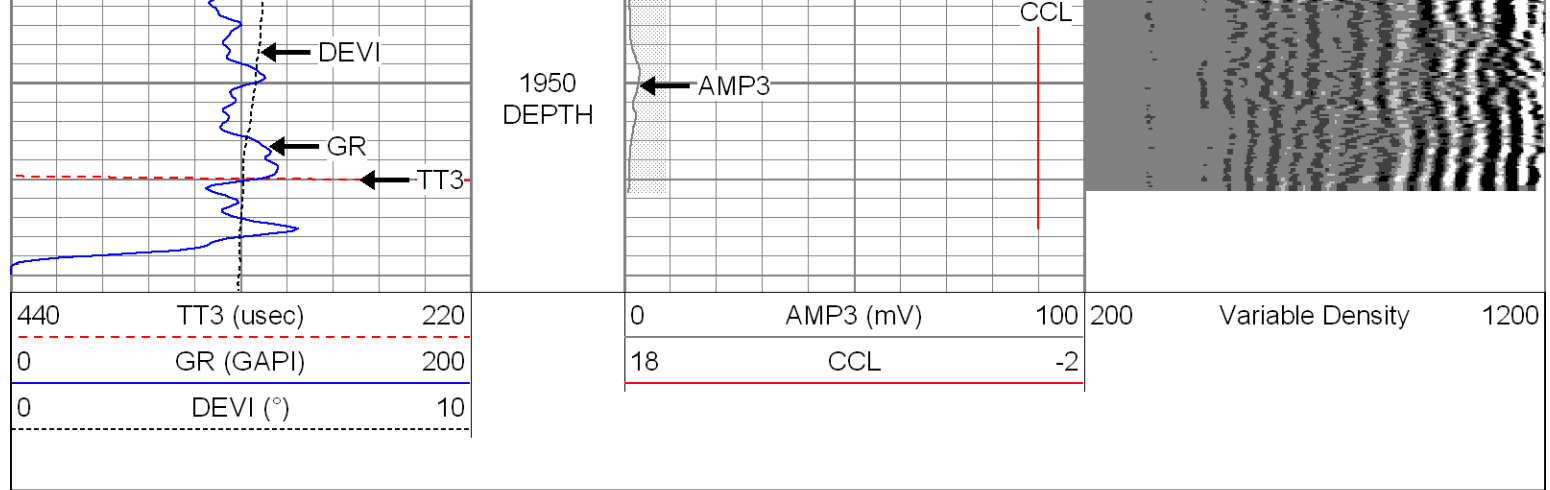






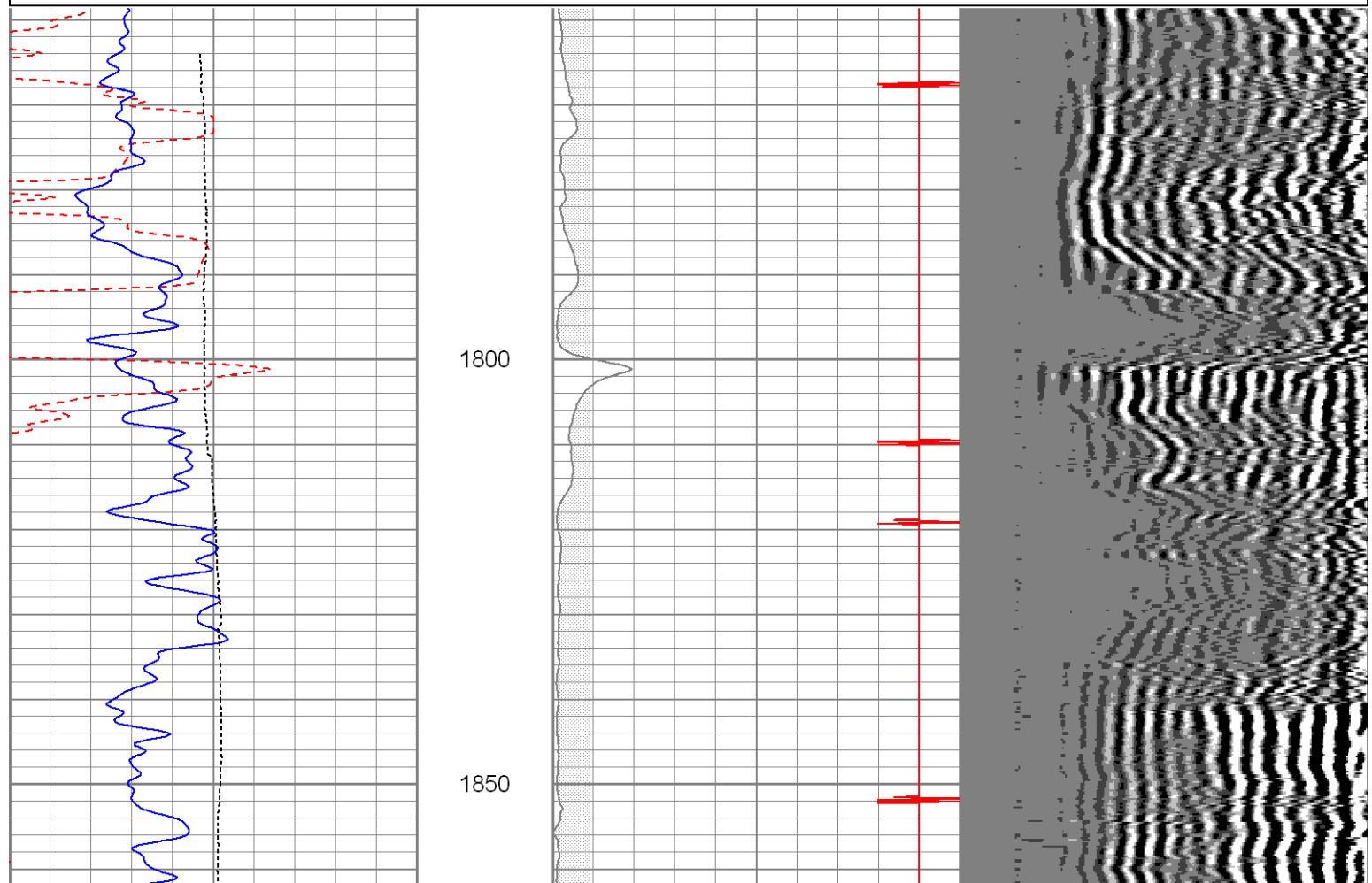
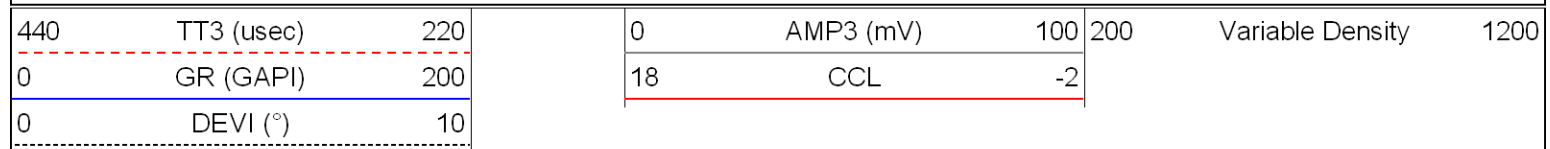


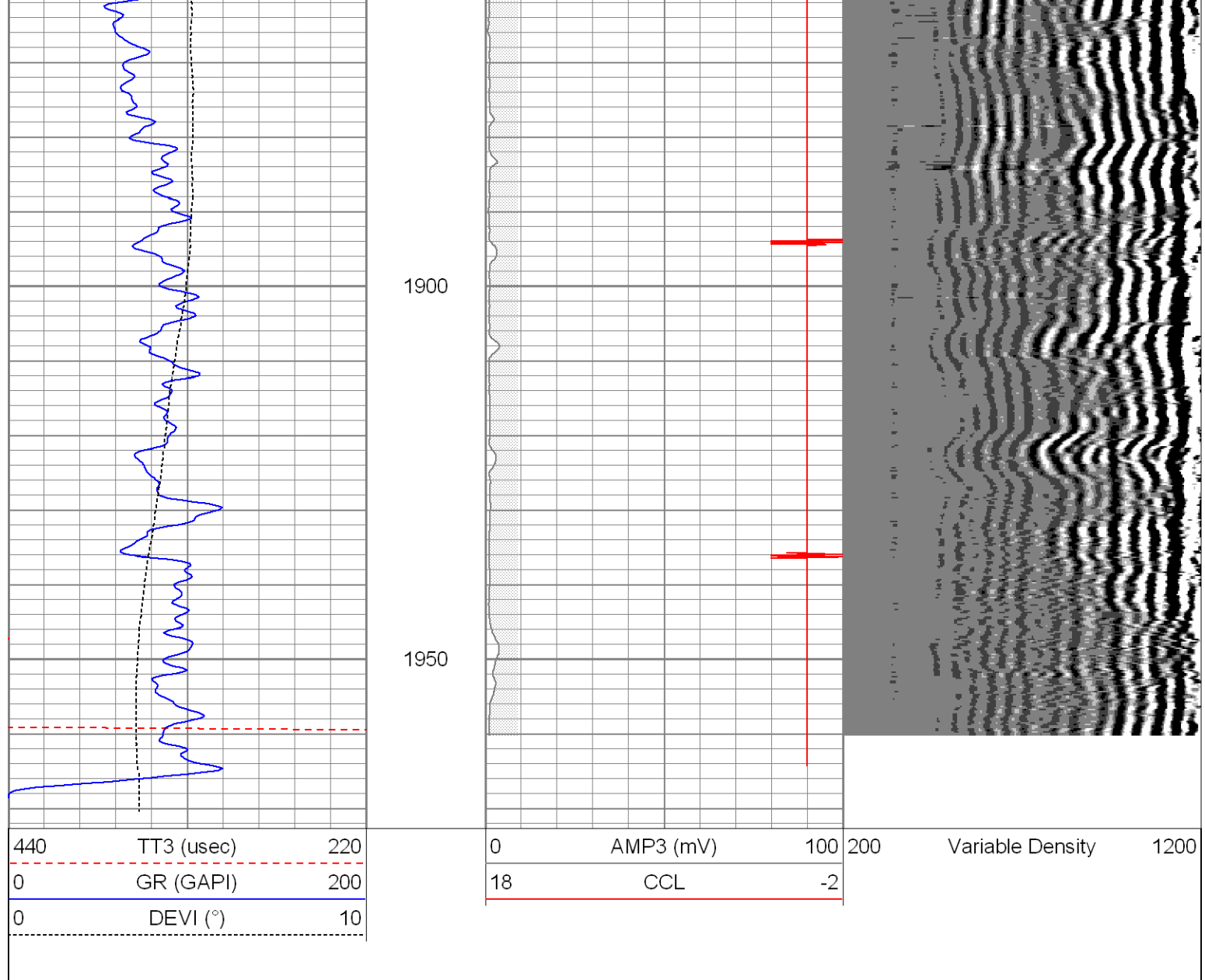




Repeat Pass

Database File: gremlin 23-35cbl.db
 Dataset Pathname: pass2
 Presentation Format: cbldig
 Dataset Creation: Mon Nov 07 08:07:35 2011 by Log SCH 110722
 Charted by: Depth in Feet scaled 1:240





Calibration Report

Database File: gremlin 23-35cbl.db
Dataset Pathname: pass2
Dataset Creation: Mon Nov 07 08:07:35 2011 by Log SCH 110722

Gamma Ray Calibration Report

Serial Number: 081014
Tool Model: 275D_INC
Performed: Thu Sep 02 12:34:39 2010

Calibrator Value: 1.0 GAPI

Background Reading: 0.0 cps
Calibrator Reading: 1.0 cps

Sensitivity: 1.0000 GAPI/cps

Inclinometer Calibration Report

Performed: Thu Sep 02 12:35:05 2010

Low Read. High Read. Low Ref. High Ref.

X Accelerometer

Y Accelerometer

-3589.40

3580.00

-1.00

1.00

gee

Z Accelerometer

-3673.00

3502.20

-1.00

1.00

gee

Cement Bond Log Calibration Report

Serial Number:

080201

Tool Model:

DigitalCBL

Performed:

Thu Oct 27 10:05:24 2011

Depth:

729.191

ft

Casing Diameter:

5.5

in

3' Spacing

5' Spacing

Signal Zero:

1

0

mV

Calibrated Amplitude:

71.921

71.921

mV

Reading at Signal Zero:

-0.0012207

-0.00124512

V

Reading in Free Pipe:

2

-0.975732

V

Gain:

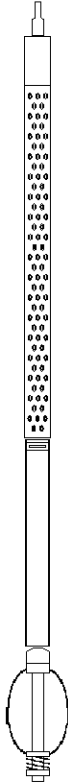
35.4389

-73.8039

Offset:

1.04326

-0.0918946

Sensor	Offset (ft)	Schematic	Description	Len (ft)	OD (in)	Wt (lb)
			sdschd	0.75	1.44	3.00
WVF3	11.69		Probedig-DigitalCBL (080201) 2 3/4 Bond Tool	8.77	2.75	92.00
WVF5	10.69					
CCL	6.44		GR-275D_INC (081014) 2-3/4" GR-CCL with Inclination	4.50	2.75	
ACCX	4.77					
ACCY	4.77					
ACCZ	4.77					
GR	3.77		275 2 3/4" Centralizer	2.94	2.75	10.00
		Dataset:	gremlin 23-35cbl.db: field/well/run1/pass2			
		Total Length:	16.95 ft			
		Total Weight:	105.00 lb			
		O.D.	2.75 in			