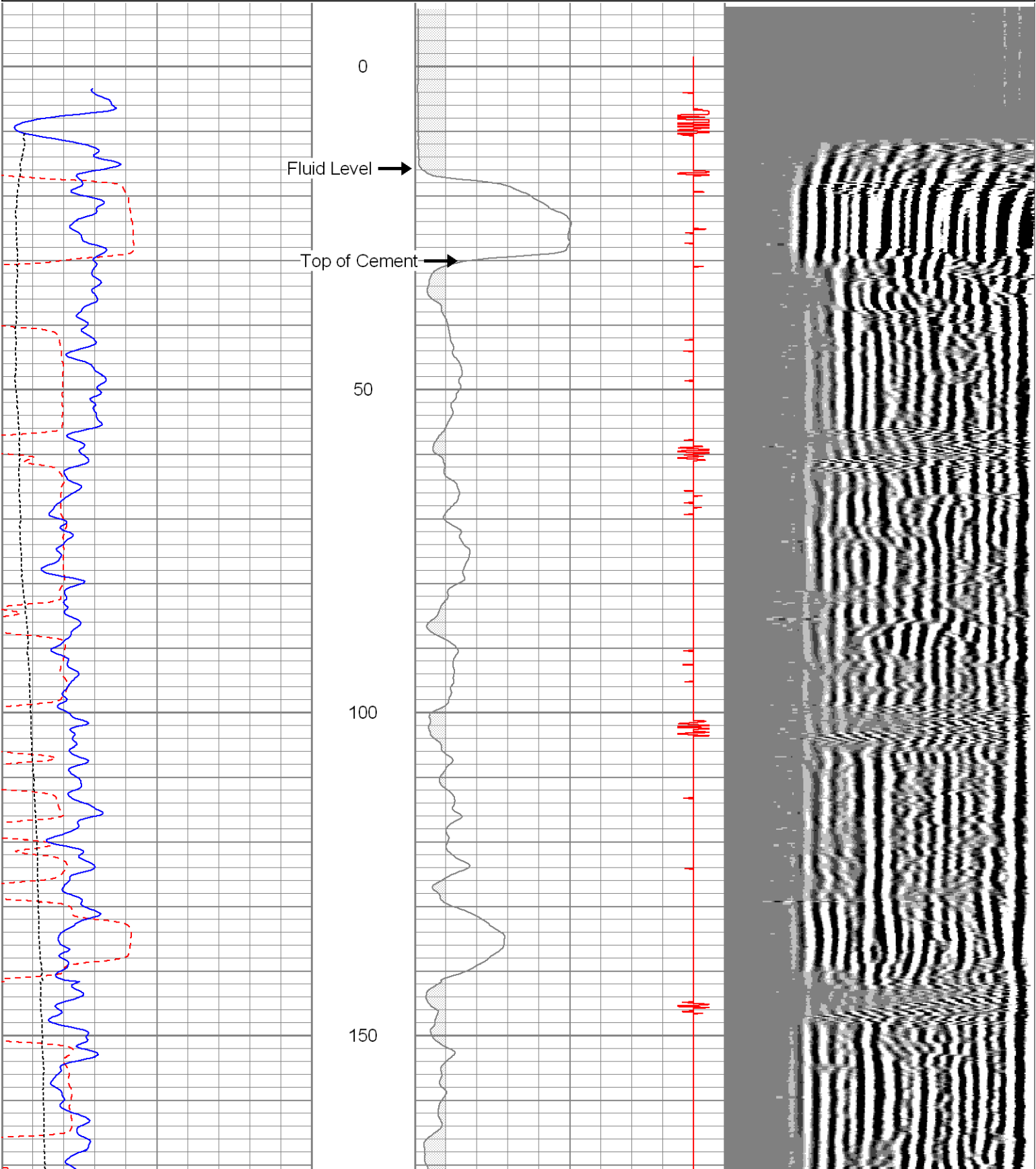


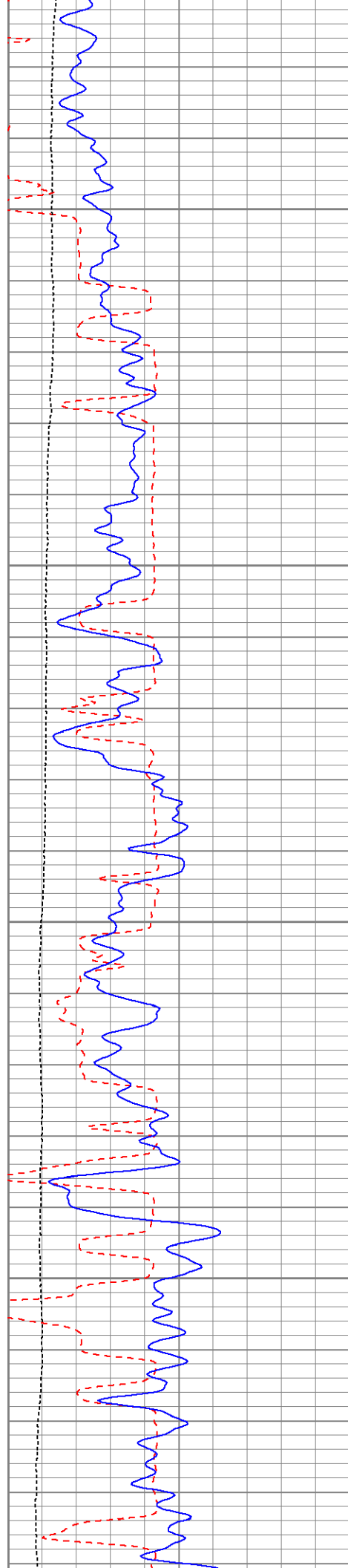
<<< Fold Here >>>
All interpretations are opinions based on inferences from electrical or other measurements and we cannot and do not guarantee the accuracy or correctness of any interpretation, and we shall not, except in the case of gross or willful negligence on our part, be liable or responsible for any loss, costs, damages, or expenses incurred or sustained by anyone resulting from any interpretation made by any of our officers, agents or employees. These interpretations are also subject to our general terms and conditions set out in our current Price Schedule.
Comments
<div>Directions</div> <div>Go up big bingum to past Jeep trail stay left after the gate</div>



Database File: ac1303112811cbl.db  
Dataset Pathname: merge1  
Presentation Format: cbl dig  
Dataset Creation: Mon Nov 28 12:11:22 2011  
Charted by: Depth in Feet scaled 1:240

440	TT3 (usec)	220	0	AMP3 (mV)	100	200	Variable Density	1200
0	GR (GAPI)	200	18	CCL	-2			
0	DEVI (°)	10						



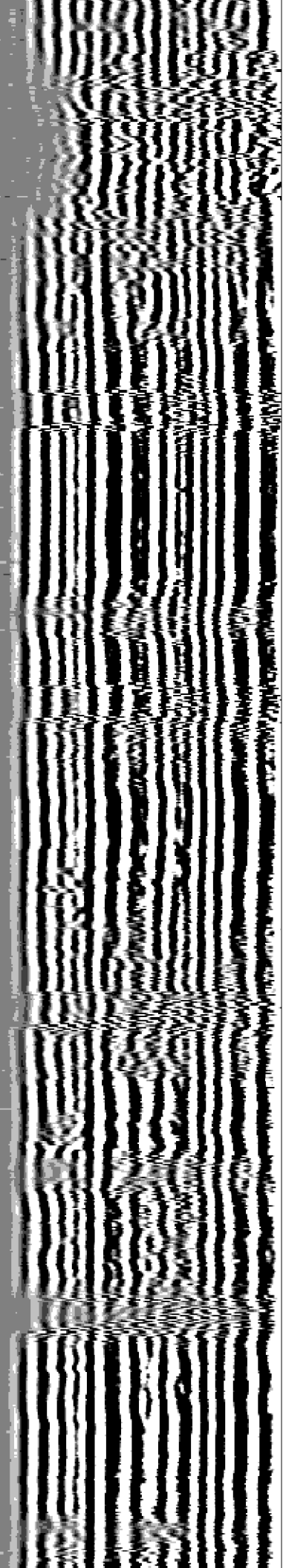
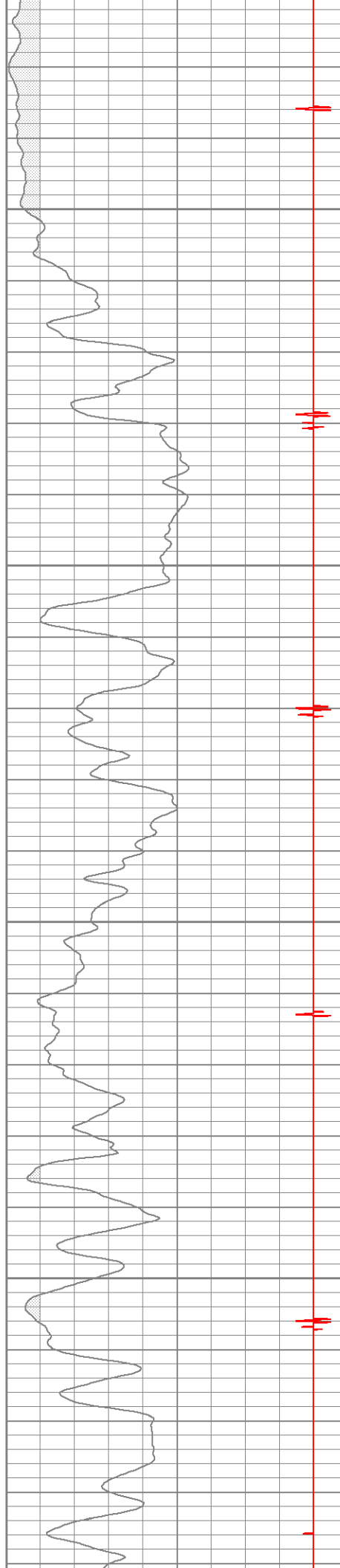


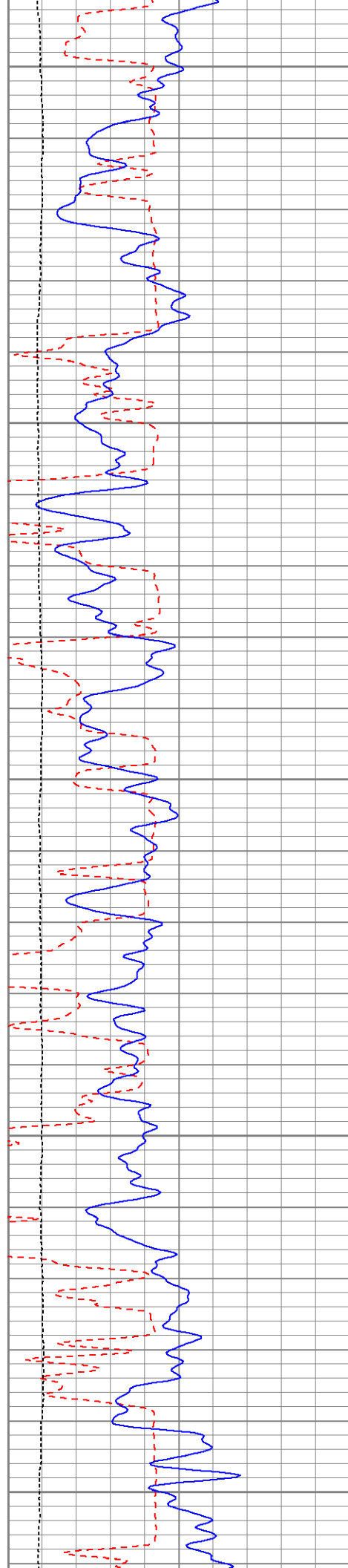
200

250

300

350





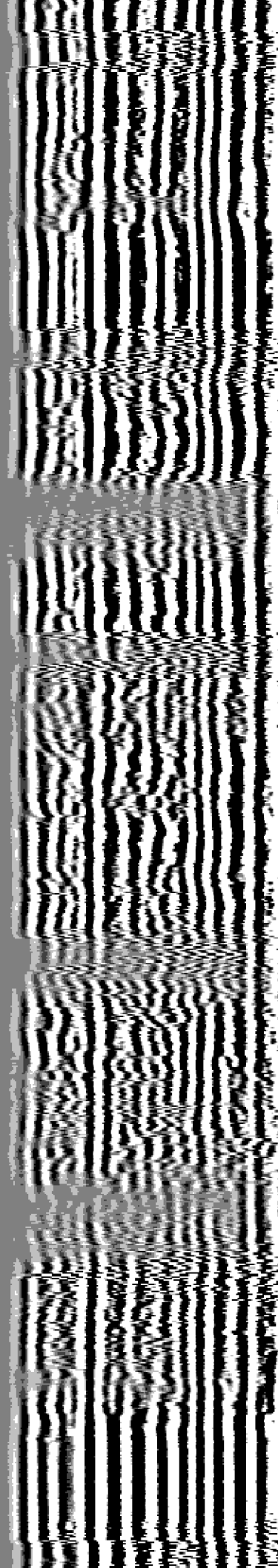
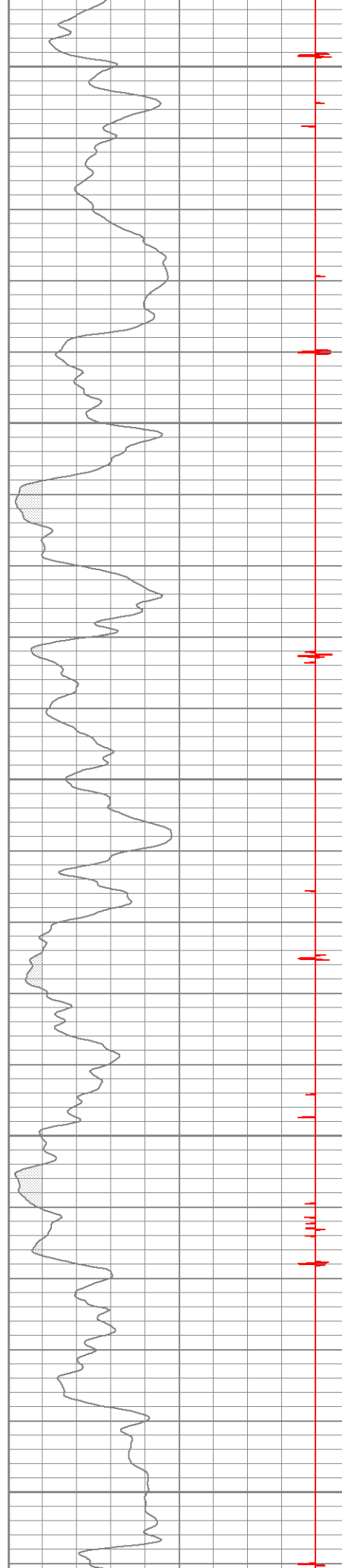
400

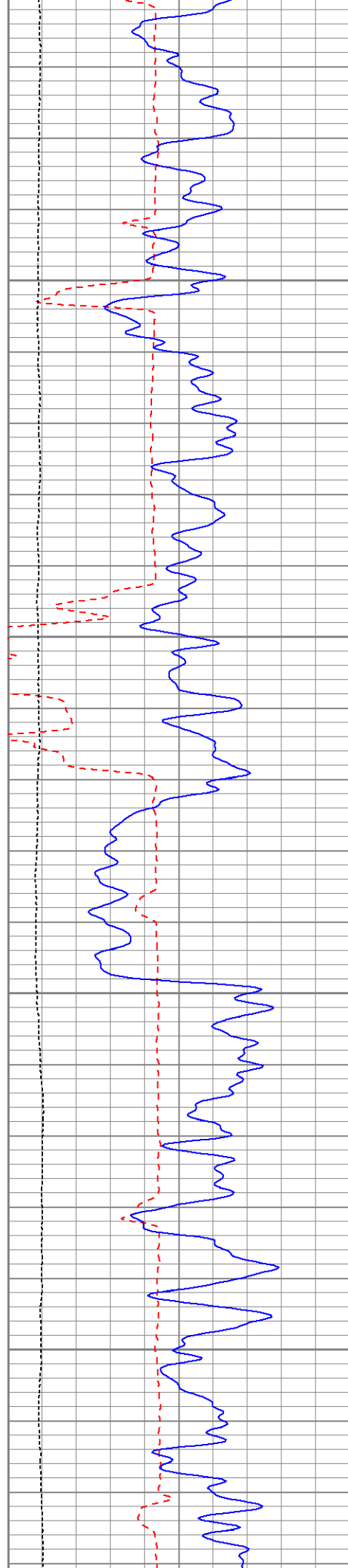
450

500

550

600



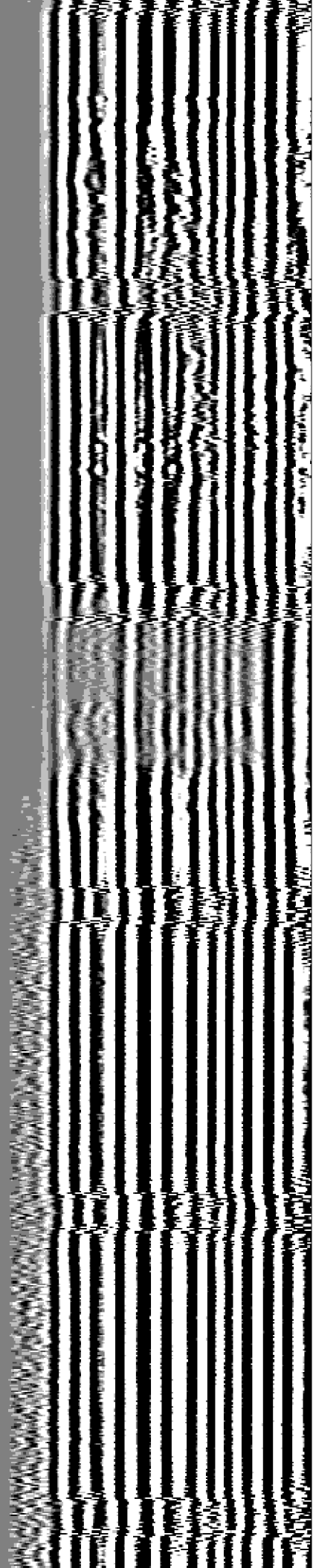
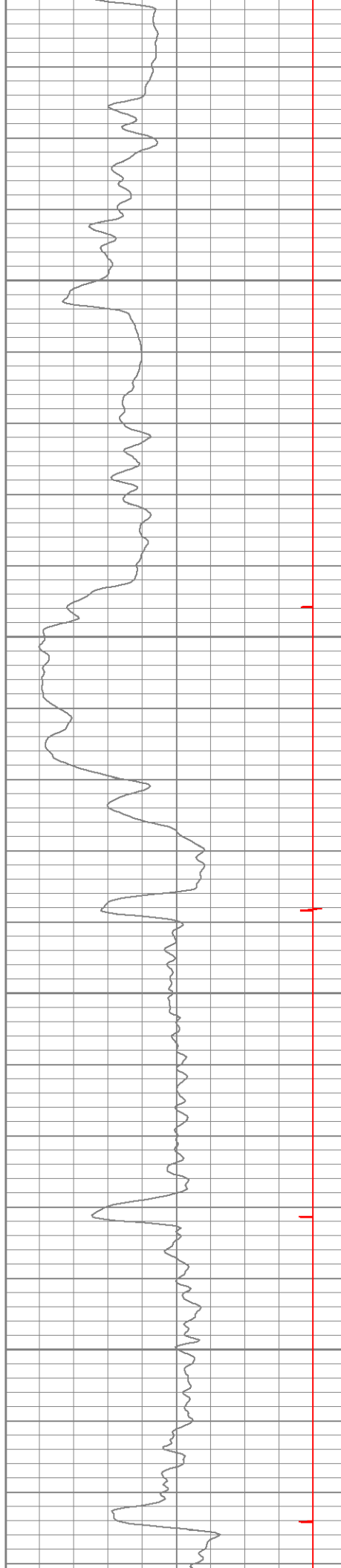


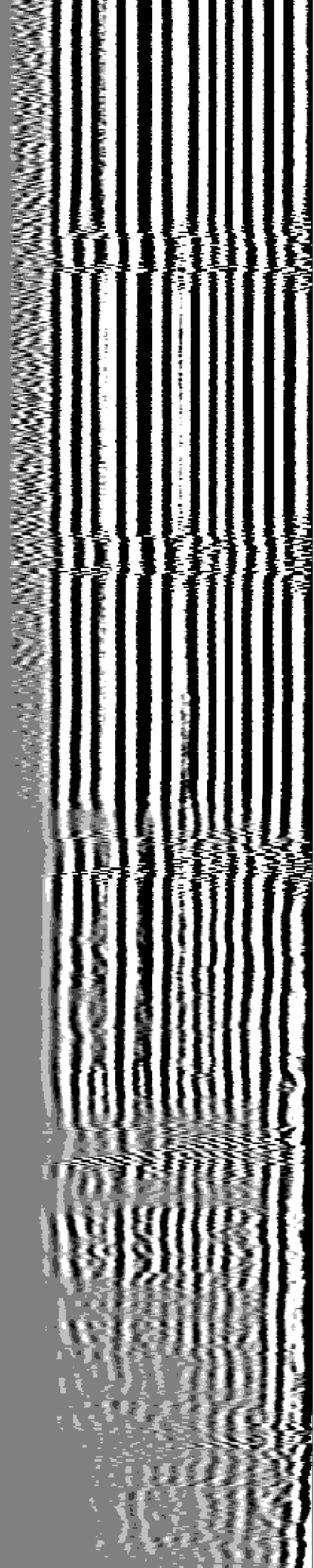
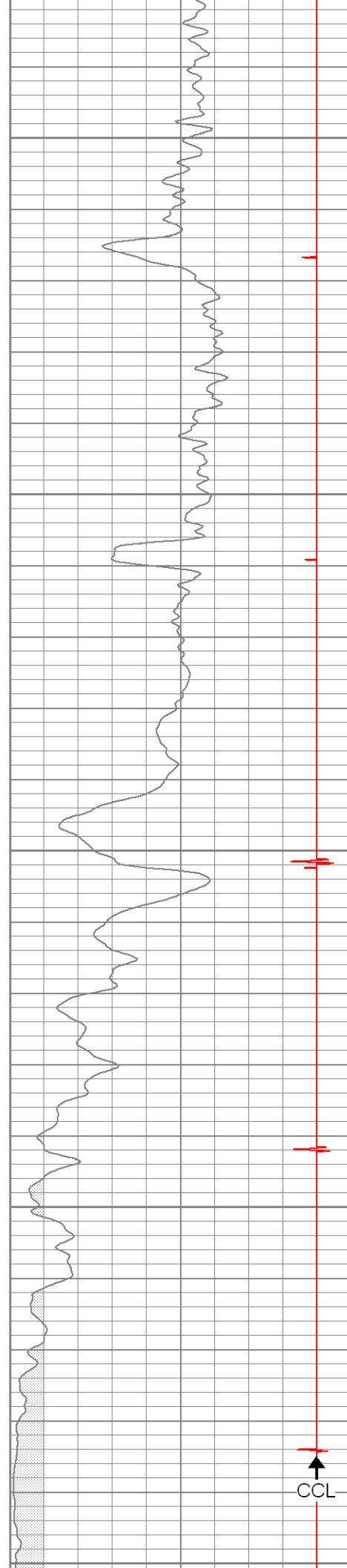
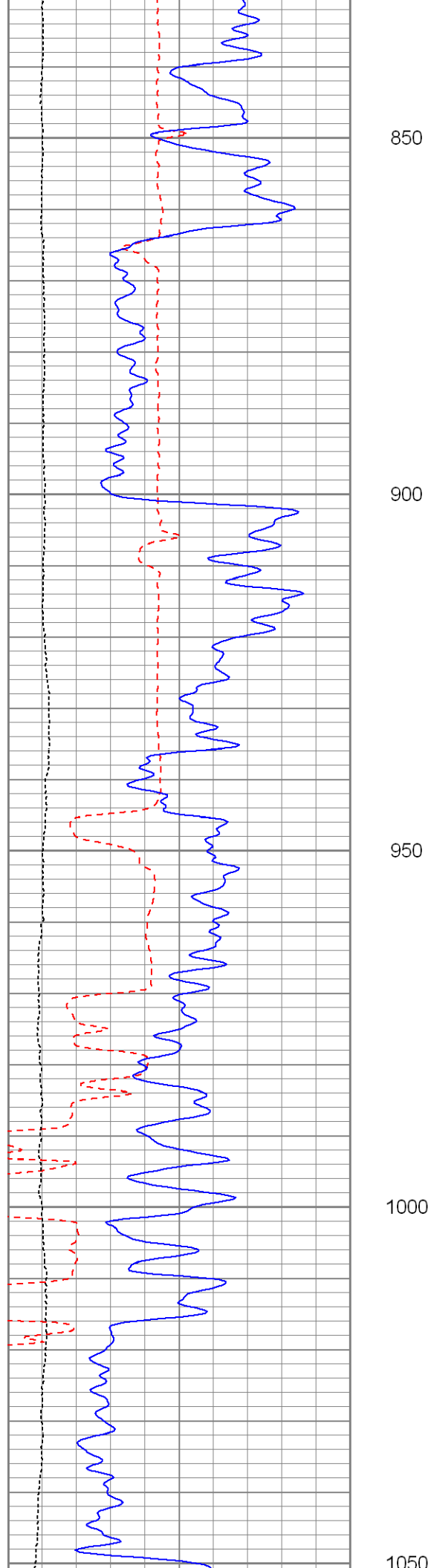
650

700

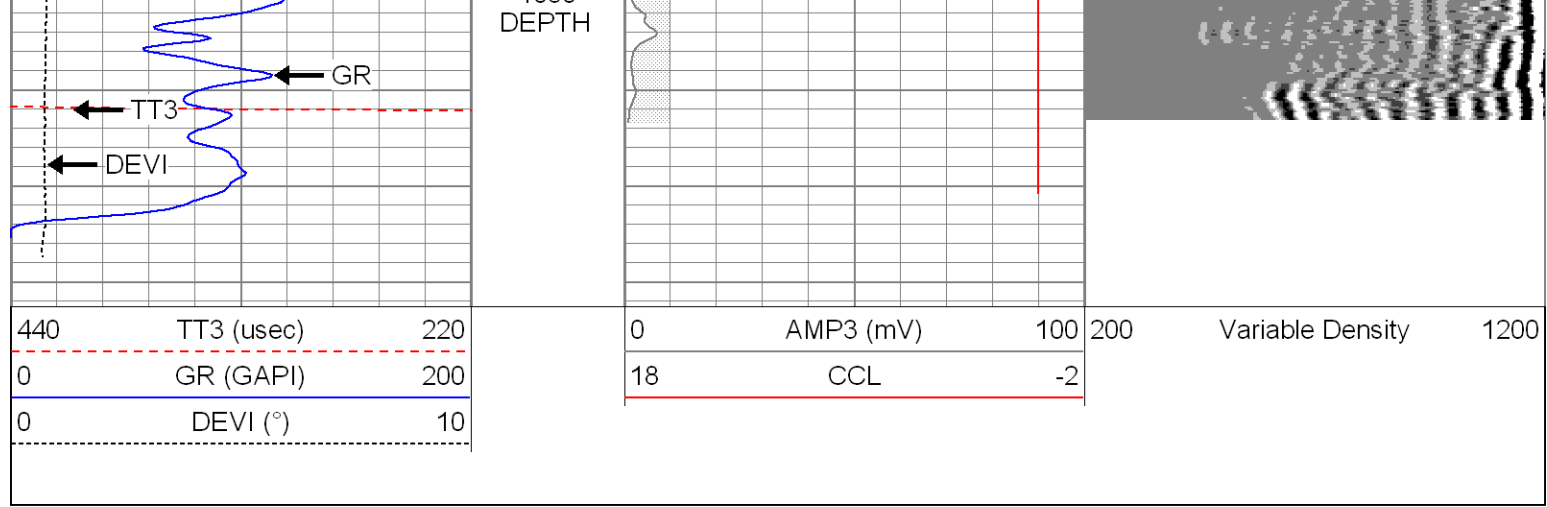
750

800



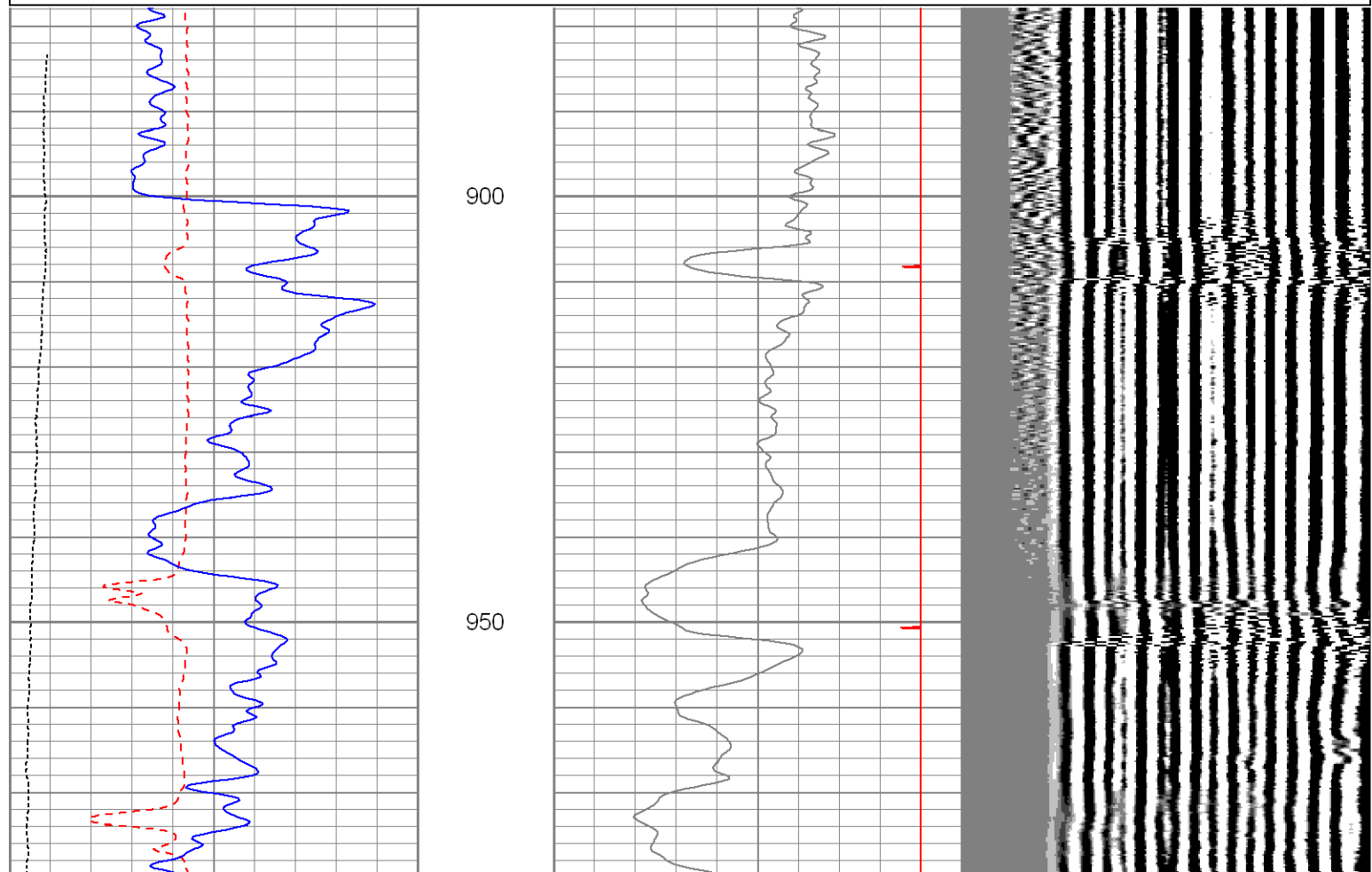
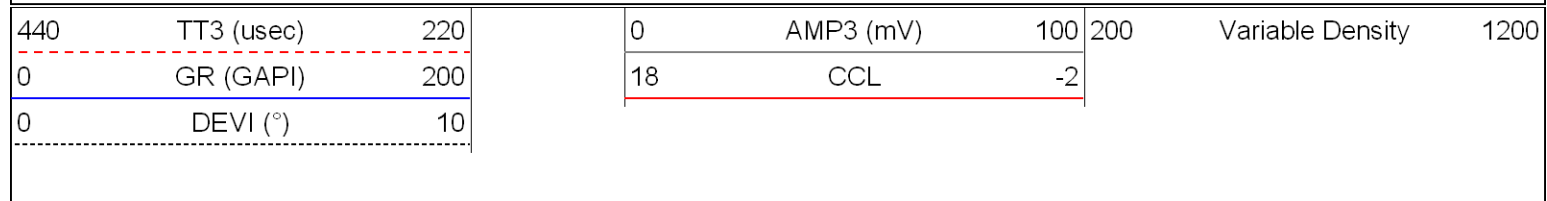


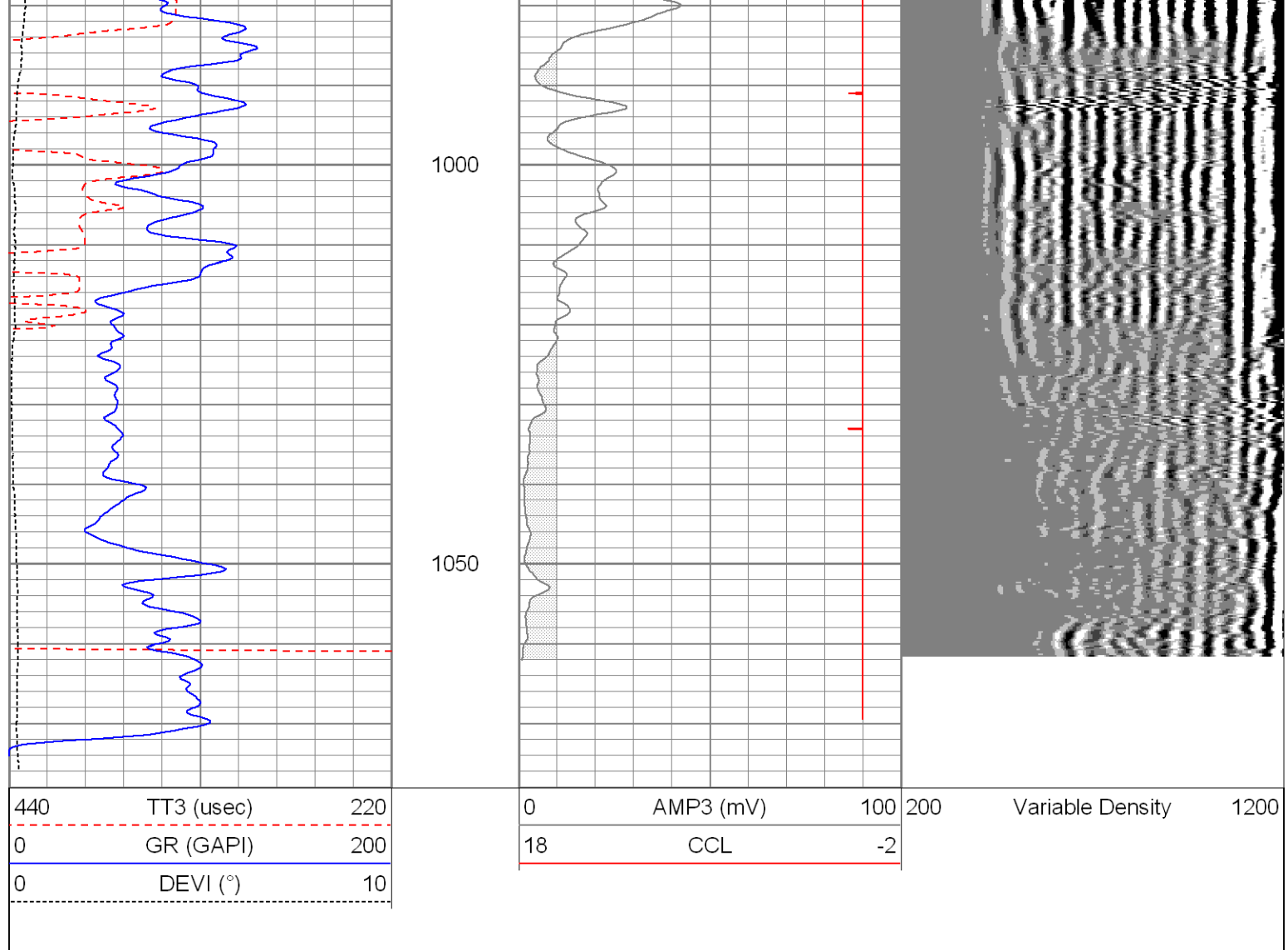




# Repeat Pass

Database File: ac1303112811cbl.db  
Dataset Pathname: pass1  
Presentation Format: cbldig  
Dataset Creation: Mon Nov 28 11:22:10 2011 by Log SCH 110722  
Charted by: Depth in Feet scaled 1:240





### Calibration Report

Database File: ac1303112811cbl.db  
 Dataset Pathname: pass3  
 Dataset Creation: Mon Nov 28 11:59:48 2011 by Log SCH 110722

### Gamma Ray Calibration Report

Serial Number: 081014  
 Tool Model: 275D\_INC  
 Performed: Wed Nov 16 11:11:41 2011

Calibrator Value: 1.0 GAPI

Background Reading: 0.0 cps  
 Calibrator Reading: 1.0 cps

Sensitivity: 1.0000 GAPI/cps

### Inclinometer Calibration Report

Performed: Wed Nov 16 11:11:59 2011

	Low Read.	High Read.	Low Ref.	High Ref.	
X Accelerometer	-3589.40	3580.00	-1.00	1.00	gee
Y Accelerometer	-3673.00	3502.20	-1.00	1.00	gee



