

Company		Apache Canyon 13-3		Company		XTO ENERGY INC.	
Well		PurgatorieRiver		Well		Apache Canyon 13-3	
Field		Las Animas		Field		PurgatorieRiver	
County		Co		County		Las Animas	
State				State		Co	
Location:				API # : 05-071-06129-00			
SEC 8 TWP 34S RGE 67W				722' FNL & 2128' FWL			
Permanent Datum GL				Elevation 7880'			
Log Measured From KB 12' A.G.L				Elevation K.B. 7892'			
Drilling Measured From KB				Elevation D.F. 7880'			
Other Services				Devi			
Date							
Run Number				11-18-11			
Depth Driller				One			
Depth Logger				1907'			
Bottom Logged Interval				1090'			
Top Log Interval				1088'			
Open Hole Size				Surface			
Type Fluid				///			
Density / Viscosity				water			
Max. Recorded Temp.				///			
Estimated Cement Top				///			
Time Well Ready				R.O.A.			
Time Logger on Bottom				12:00 P.M.			
Equipment Number				T601			
Location				Trinidad			
Recorded By				C. Sisneros			
Witnessed By				Mr. B. Bernal			
Borehole Record							
Run Number		Bit		From		To	
Tubing Record							
Run Number		Bit		From		To	
Casing Record		Size		Wgt/Ft		Top	
Surface String		13 3/8"				Bottom	
Prot. String						211'	
Production String		8 5/8"				TD	
Liner							

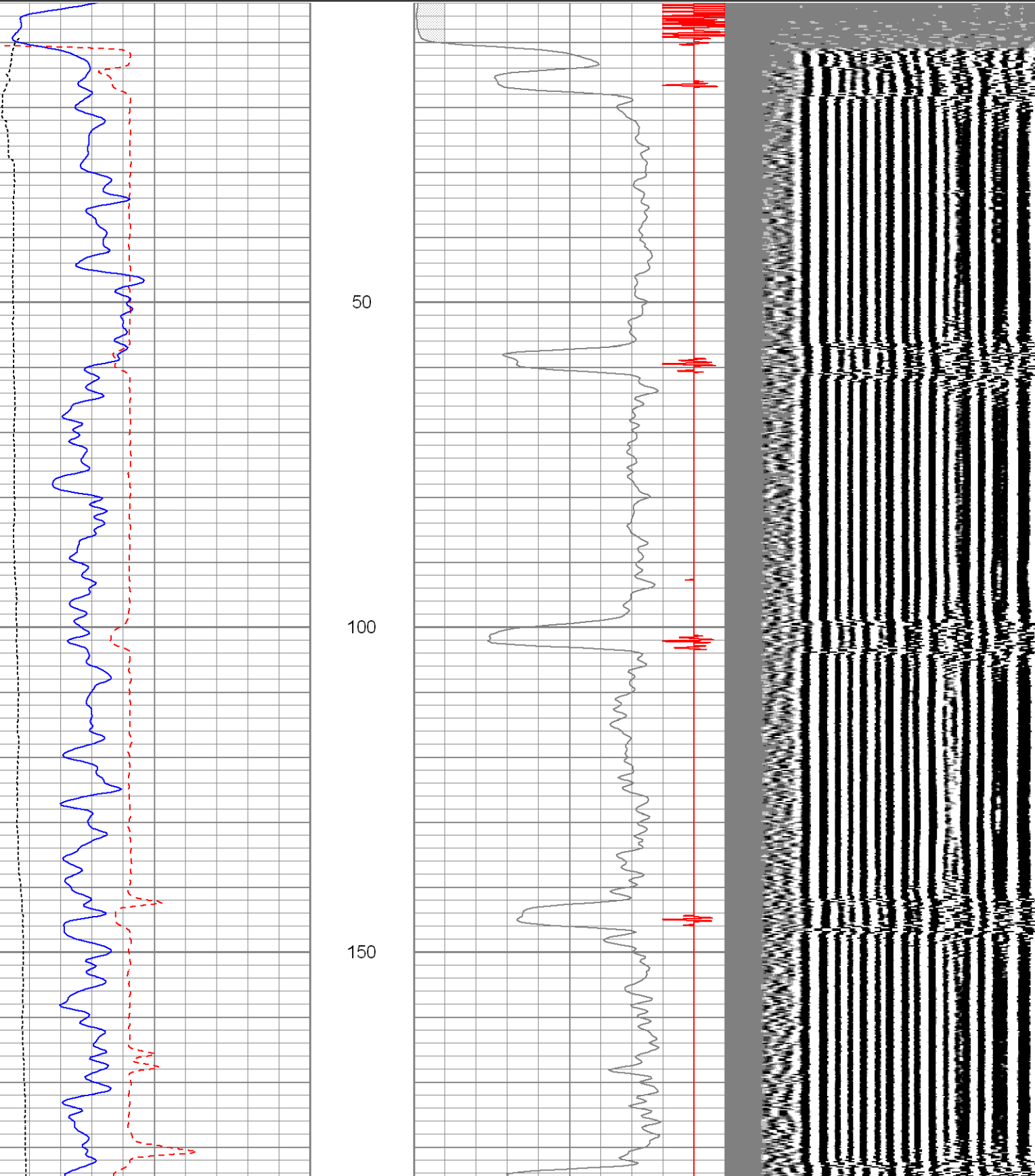
<<< Fold Here >>>

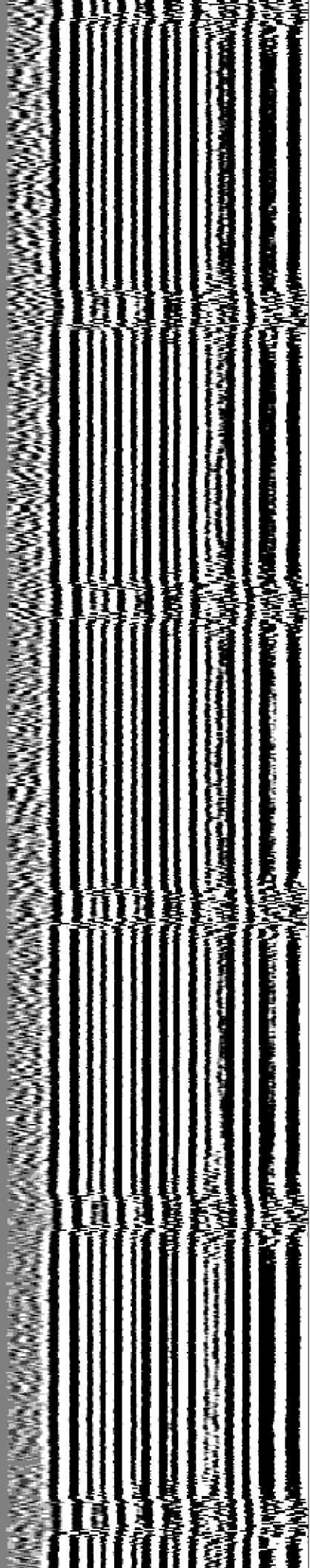
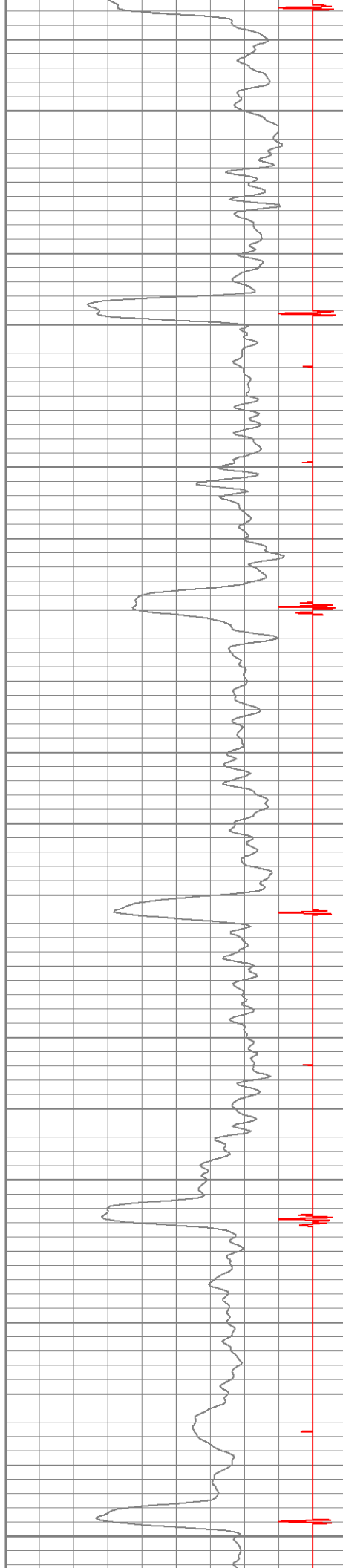
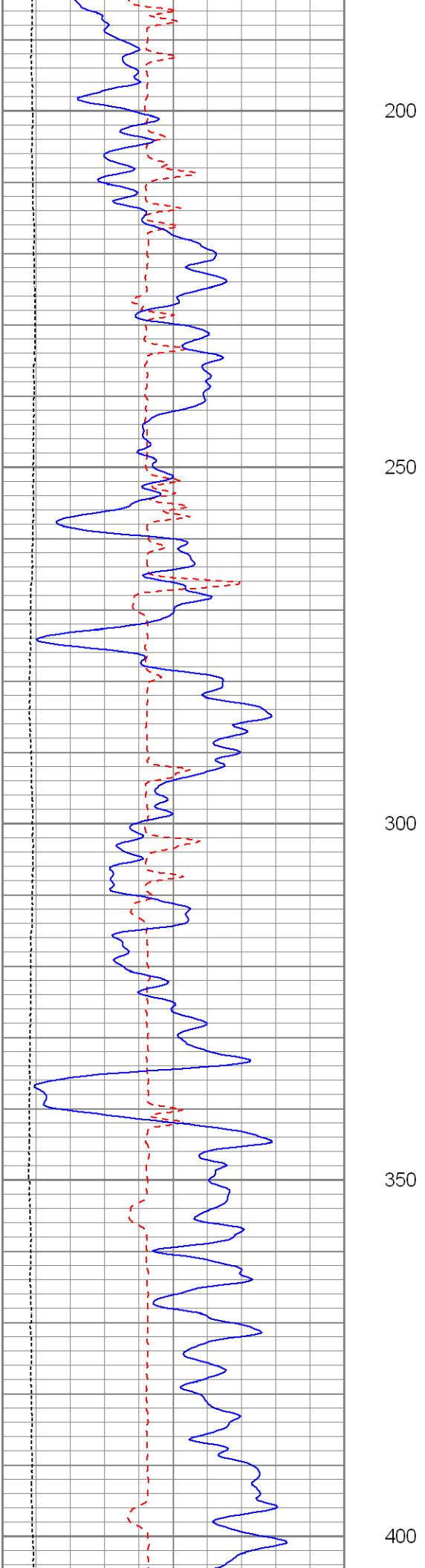
All interpretations are opinions based on inferences from electrical or other measurements and we cannot and do not guarantee the accuracy or correctness of any interpretation, and we shall not, except in the case of gross or willful negligence on our part, be liable or responsible for any loss, costs, damages, or expenses incurred or sustained by anyone resulting from any interpretation made by any of our officers, agents or employees. These interpretations are also subject to our general terms and conditions set out in our current Price Schedule.

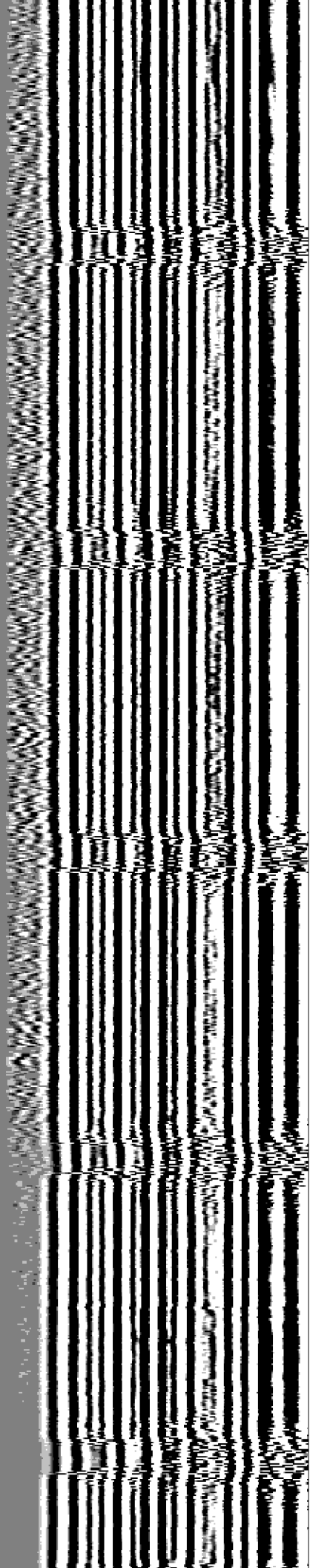
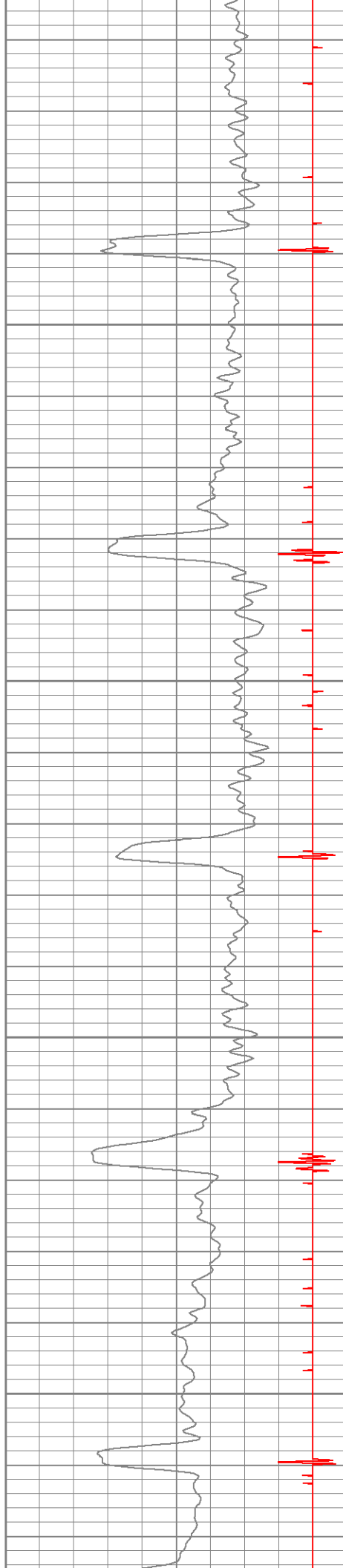
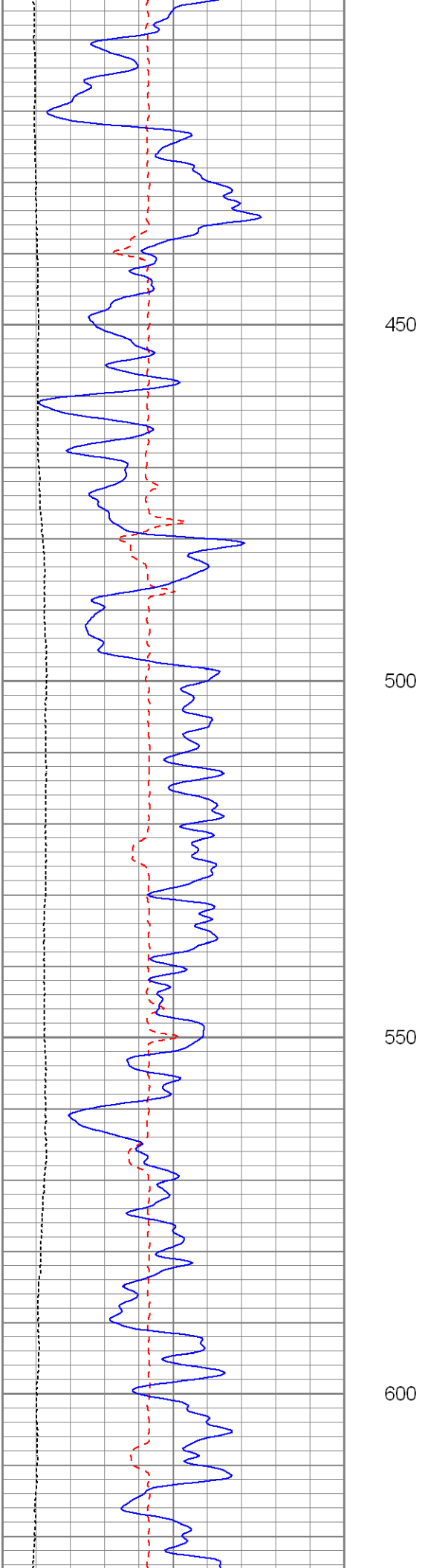
Comments

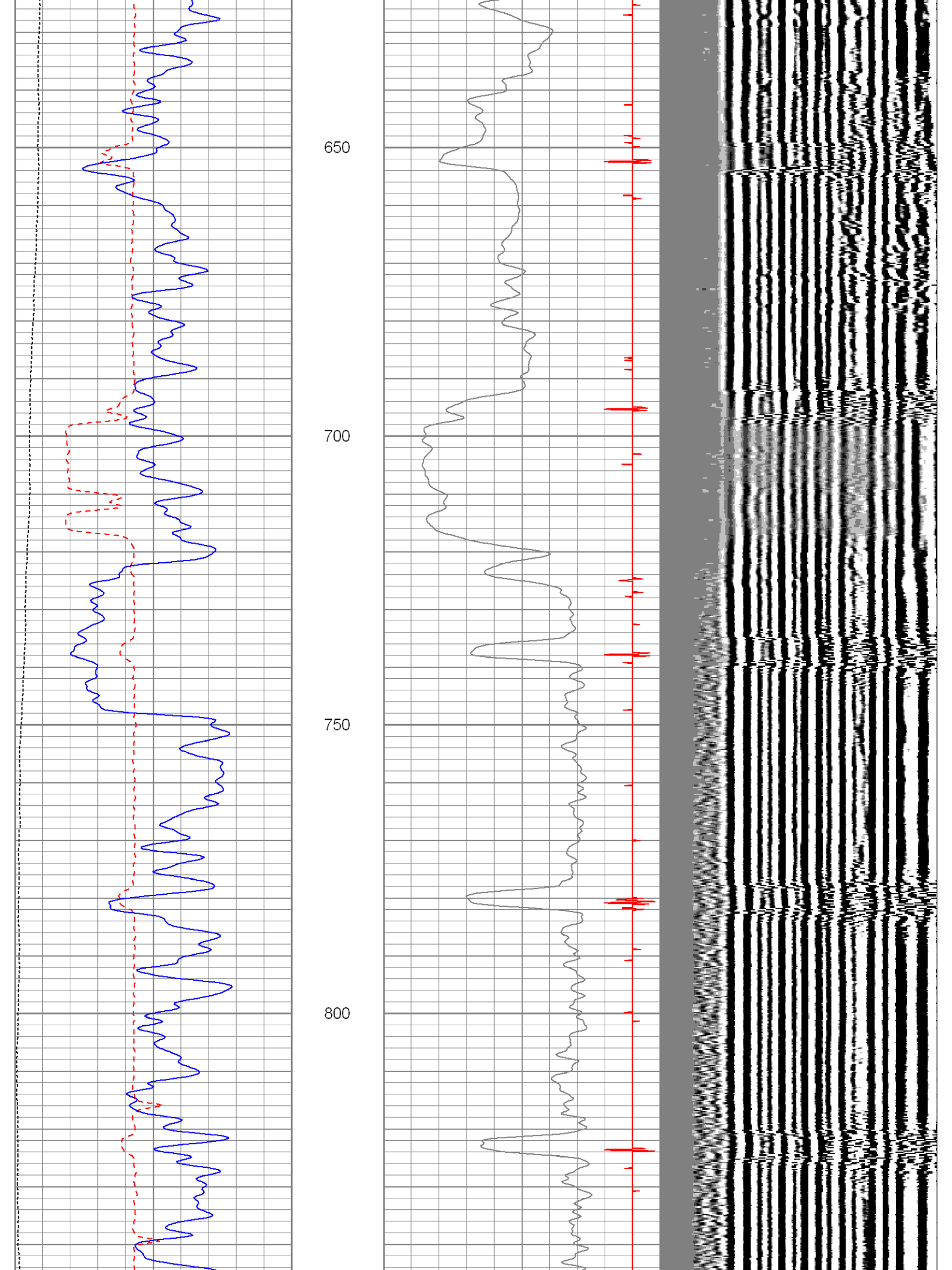
Database File: ac1303111811b.db  
Dataset Pathname: pass5  
Presentation Format: cbldig  
Dataset Creation: Fri Nov 18 12:59:01 2011 by Log SCH 110722  
Charted by: Depth in Feet scaled 1:240

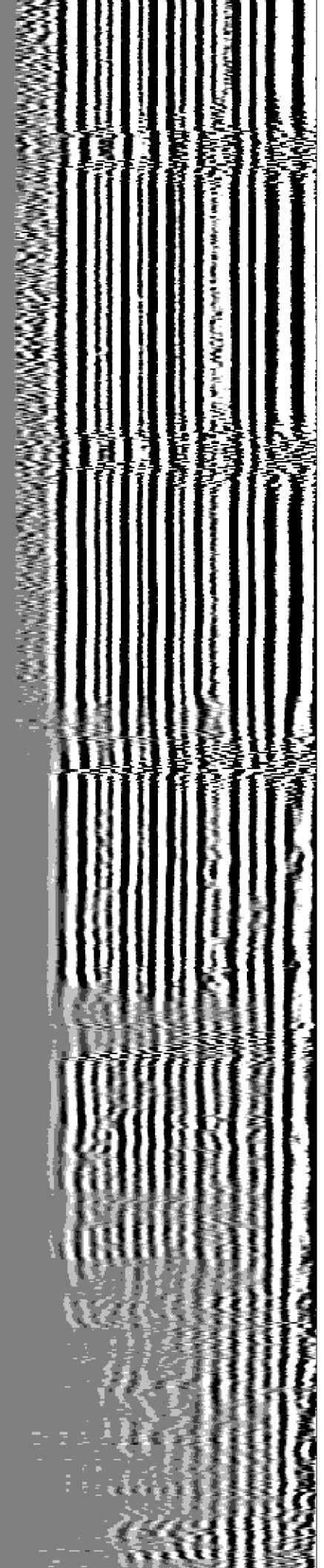
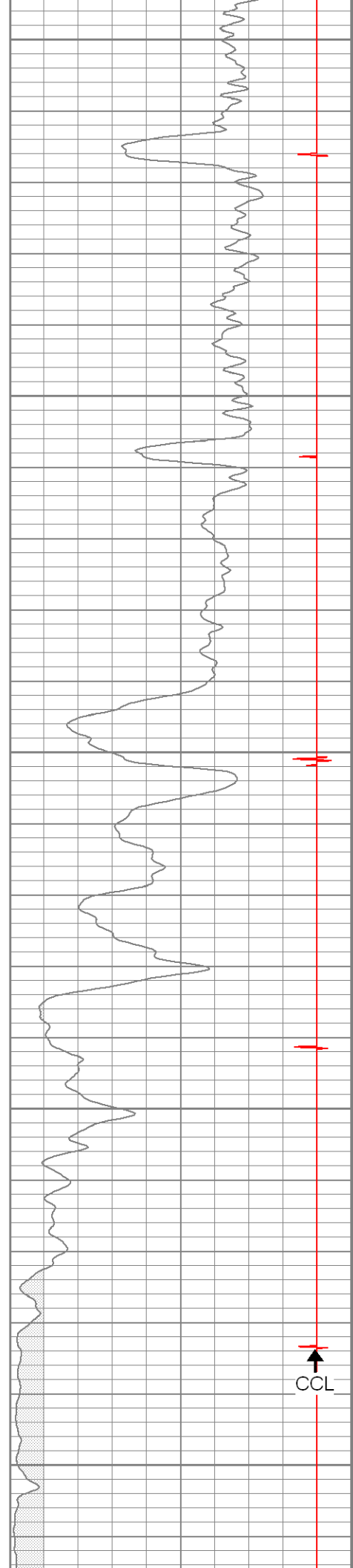
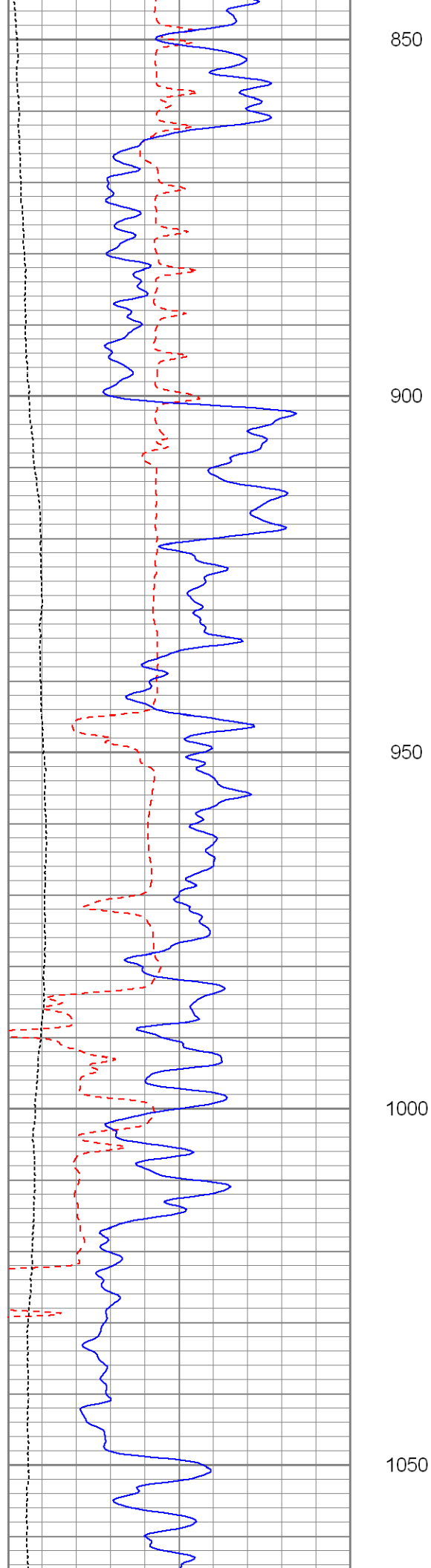
440	TT3 (usec)	220	0	AMP3 (mV)	100	200	Variable Density	1200
0	GR (GAPI)	200	18	CCL	-2			
0	DEVI (°)	10						



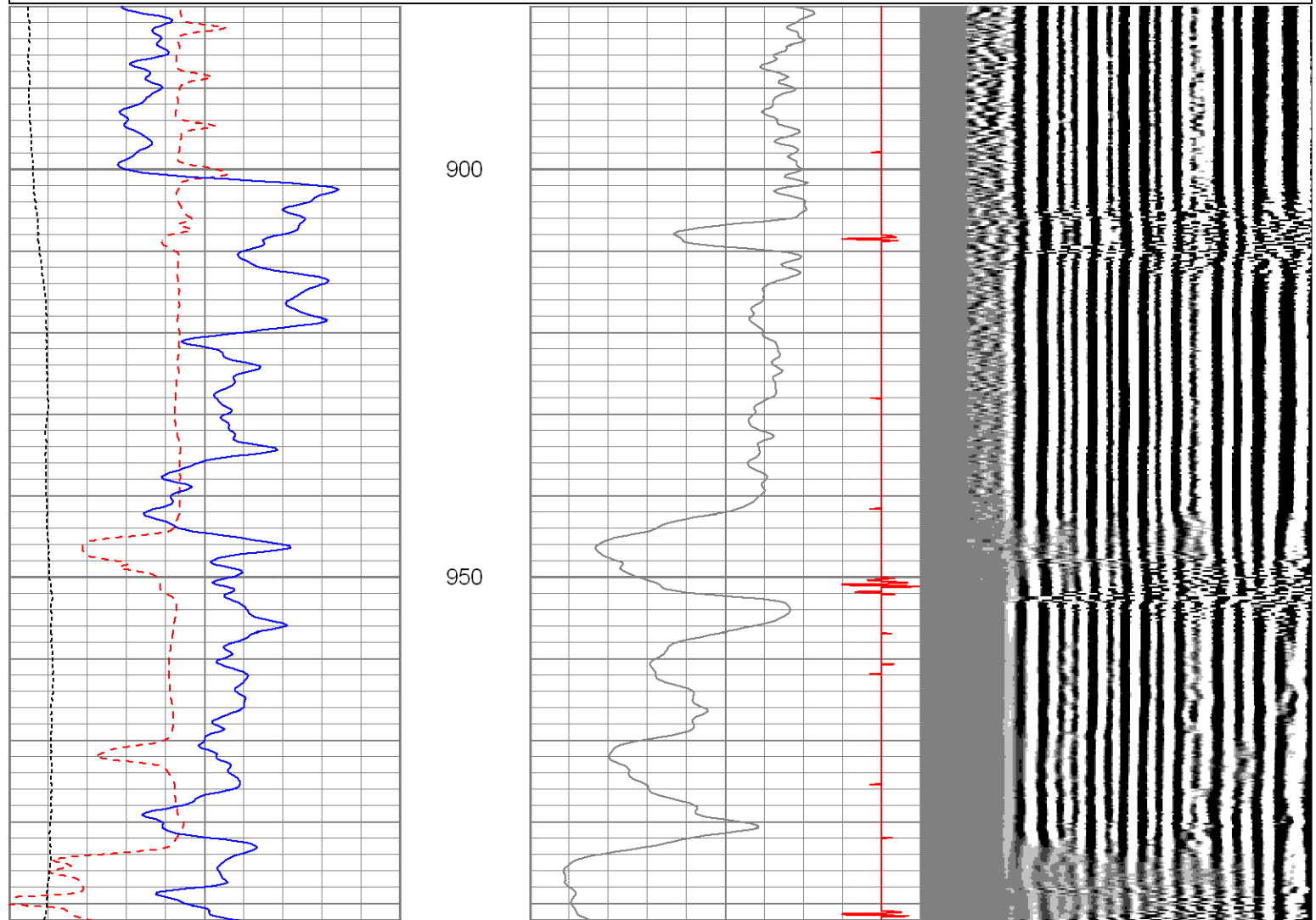
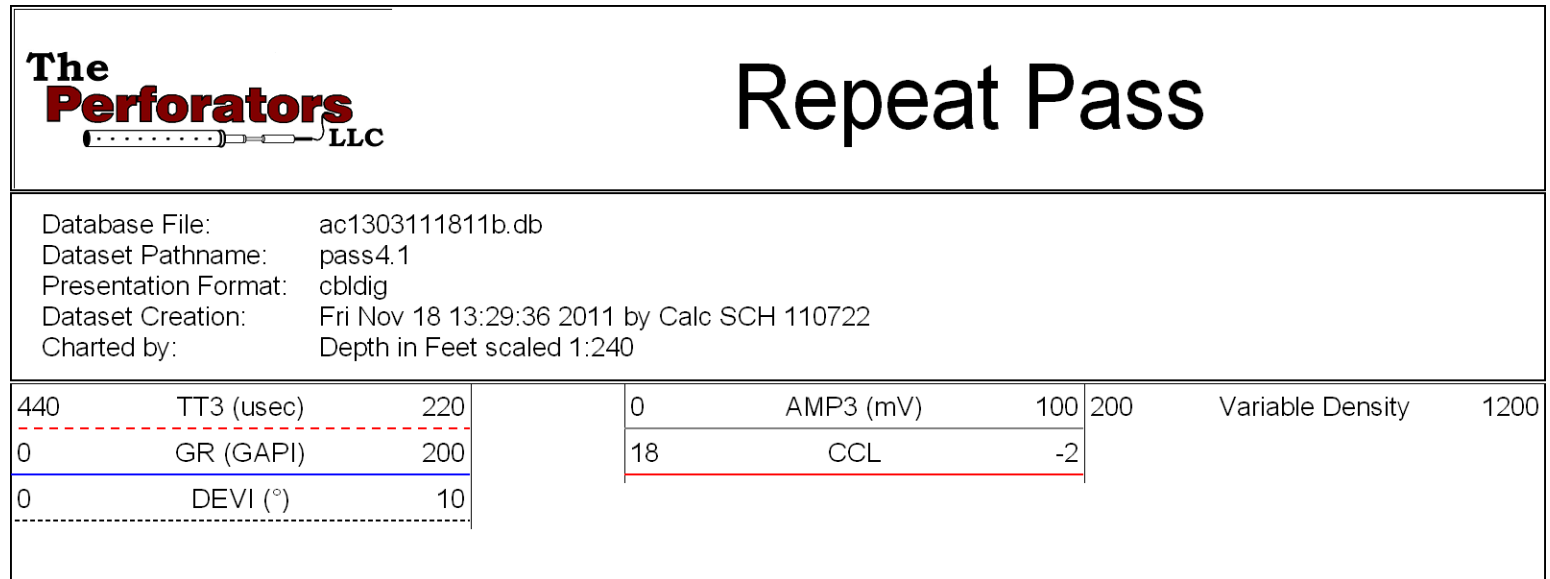
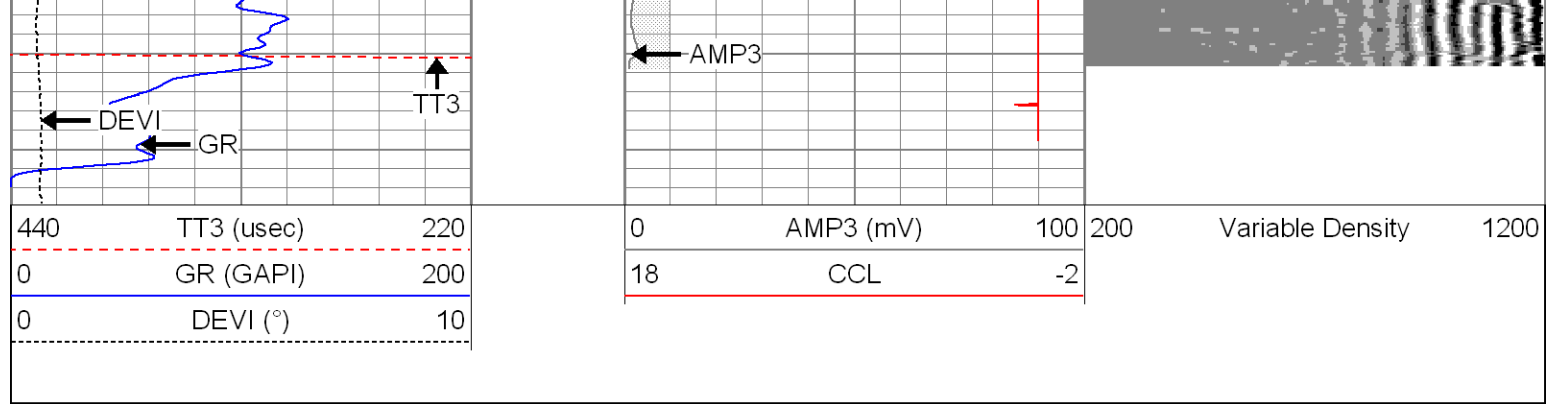


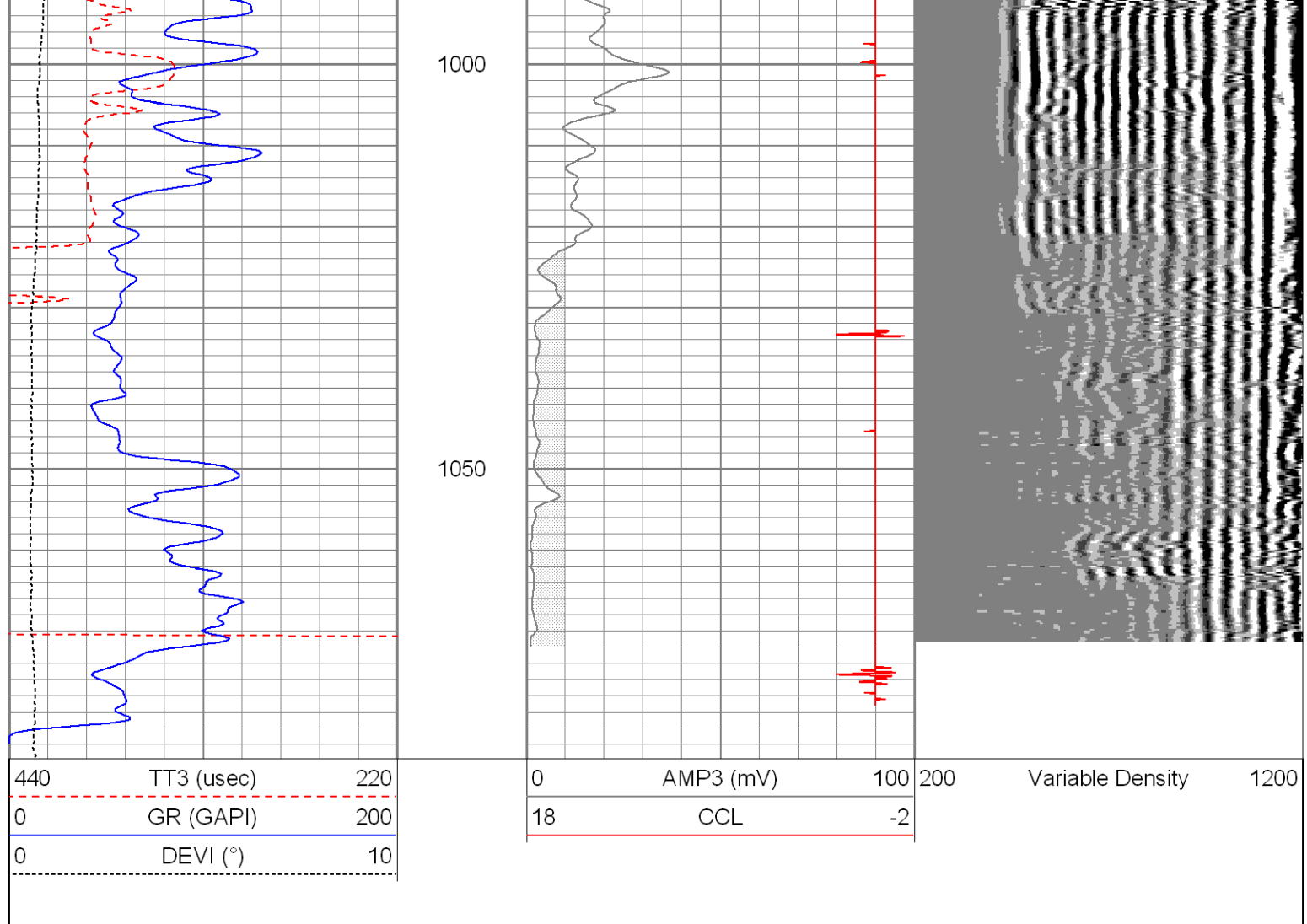












### Calibration Report

Database File: ac1303111811b.db  
 Dataset Pathname: pass2  
 Dataset Creation: Fri Nov 18 12:20:16 2011 by Log SCH 110722

### Gamma Ray Calibration Report

Serial Number: 081014  
 Tool Model: 275D\_INC  
 Performed: Wed Nov 16 11:11:41 2011

Calibrator Value: 1.0 GAPI

Background Reading: 0.0 cps  
 Calibrator Reading: 1.0 cps

Sensitivity: 1.0000 GAPI/cps

### Inclinometer Calibration Report

Performed: Wed Nov 16 11:11:59 2011

	Low Read.	High Read.	Low Ref.	High Ref.	
X Accelerometer	-3589.40	3580.00	-1.00	1.00	gee
Y Accelerometer	-3673.00	3502.20	-1.00	1.00	gee
Z Accelerometer					



# Cement Bond Log Calibration Report

Serial Number: 080201  
Tool Model: DigitalCBL  
Performed: Thu Oct 27 10:05:24 2011

Depth:	729.191	ft
Casing Diameter:	5.5	in

3' Spacing                      5' Spacing

Signal Zero:	1	0	mV
Calibrated Amplitude:	85	71.921	mV
Reading at Signal Zero:	-0.0012207	-0.00124512	V
Reading in Free Pipe:	0.55	-0.975732	V

Gain:	152.389	-73.8039
Offset:	1.18602	-0.0918946

Sensor	Offset (ft)	Schematic	Description	Len (ft)	OD (in)	Wt (lb)	
WVF3	15.38		Probedig-DigitalCBL (080201)	8.77	2.75	92.00	
WVF5	14.38		2 3/4 Bond Tool				
CCL	6.44		275	2 3/4" Centralizer	2.94	2.75	10.00
			sdschd		0.75	1.44	3.00
ACCX	4.77			GR-275D_INC (081014)	4.50	2.75	
ACCY	4.77			2-3/4" GR-CCL with Inclination			
ACCZ	4.77						
GR	3.77		275	2.94	2.75	10.00	
			2 3/4" Centralizer				
		Dataset:	ac1303111811b.db: field/well/run1/pass2				
		Total Length:	19.89 ft				
		Total Weight:	115.00 lb				
		O.D.	2.75 in				