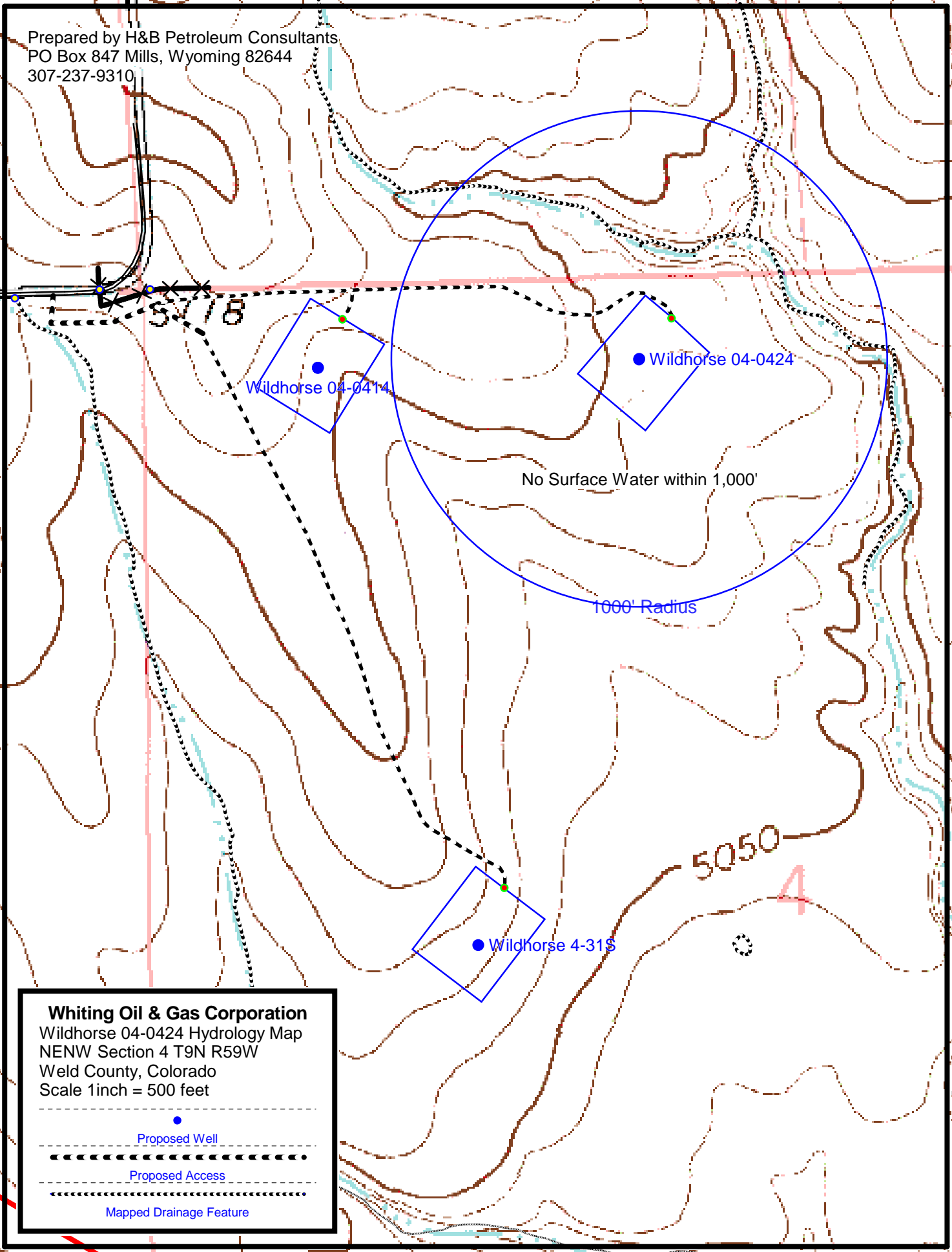


Prepared by H&B Petroleum Consultants
PO Box 847 Mills, Wyoming 82644
307-237-9310



Whiting Oil & Gas Corporation

Wildhorse 04-0424 Hydrology Map
NENW Section 4 T9N R59W
Weld County, Colorado
Scale 1inch = 500 feet

Proposed Well

Proposed Access

Mapped Drainage Feature