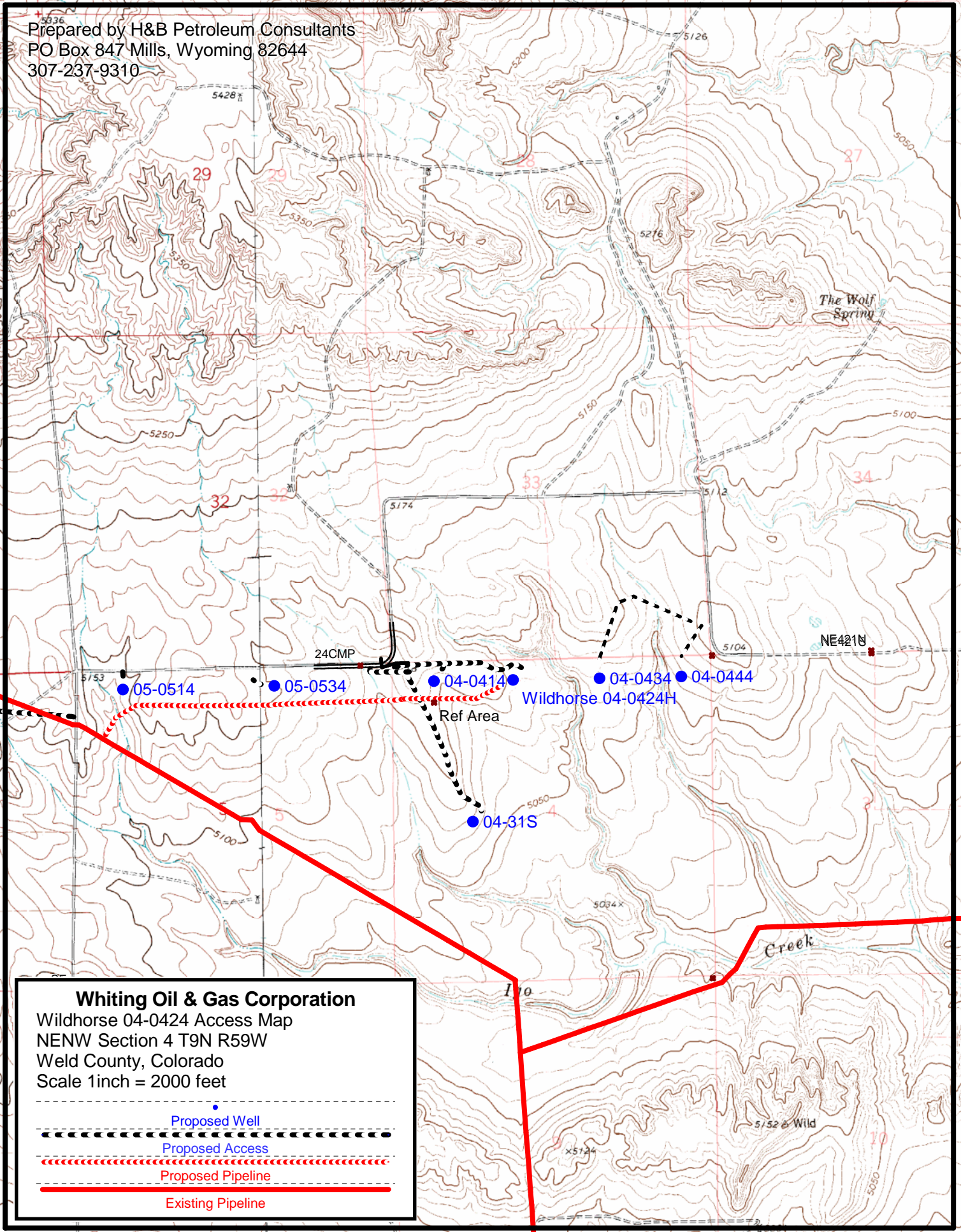


Prepared by H&B Petroleum Consultants  
PO Box 847 Mills, Wyoming 82644  
307-237-9310



### Whiting Oil & Gas Corporation

Wildhorse 04-0424 Access Map  
NENW Section 4 T9N R59W  
Weld County, Colorado  
Scale 1 inch = 2000 feet

Proposed Well

Proposed Access

Proposed Pipeline

Existing Pipeline