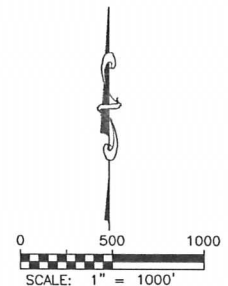
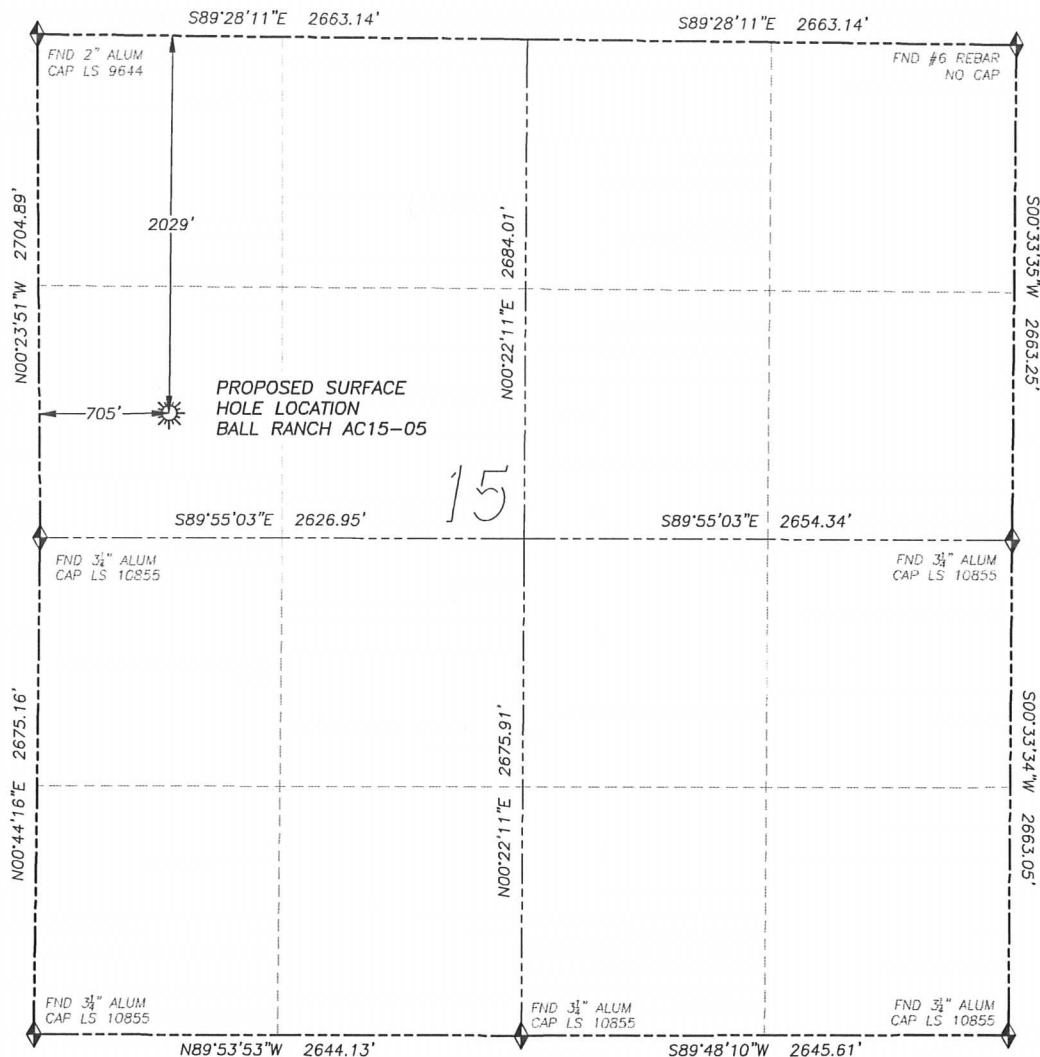


# WELL LOCATION CERTIFICATE

## BALL RANCH AC15-05

SECTION 15, TOWNSHIP 7 NORTH, RANGE 63 WEST OF THE 6TH PRINCIPAL MERIDIAN



### LEGEND

- ◆ FOUND MONUMENT AS DESCRIBED
- ☀ PROPOSED WELL
- ⊙ EXISTING WELL
- BOTTOM HOLE
- ⊗ ABANDONED WELL

### NAD 83 LATITUDE AND LONGITUDE

BALL RANCH AC15-05 SURFACE HOLE:

LATITUDE: N40.57582°

LONGITUDE: W104.42935°

ELEVATION: 4870'

FOOTAGE: 2029' FNL, 705' FWL

PDOP: 1.3

QTR/QTR: SW4/NW4

PROP LINE: 705' ± WEST

IN ACCORDANCE WITH A REQUEST FROM NATE McCORKELL OF NOBLE ENERGY INC., DALEY LAND SURVEYING, INC. HAS DETERMINED THE SURFACE LOCATION OF THE BALL RANCH AC15-05 WELL TO BE 2029' FNL, 705' FWL, AS MEASURED AT NINETY (90) DEGREES FROM THE SECTION LINES OF SECTION 15, TOWNSHIP 7 NORTH, RANGE 63 WEST OF THE 6TH PRINCIPAL MERIDIAN, WELD COUNTY, COLORADO.

I HEREBY CERTIFY THAT THIS WELL LOCATION CERTIFICATE WAS PREPARED BY ME OR UNDER MY DIRECT SUPERVISION, THAT THE WORK WAS COMPLETED ON 11/1/2011 FOR AND ON BEHALF OF NOBLE ENERGY, INC., AND THAT THIS MAP DOES NOT REPRESENT A BOUNDARY SURVEY, IT IS NOT A LAND SURVEY PLAT OR AN IMPROVEMENT SURVEY PLAT AND IT IS NOT TO BE RELIED UPON FOR THE ESTABLISHMENT OF FENCE, BUILDING OR OTHER FUTURE IMPROVEMENT LINES.

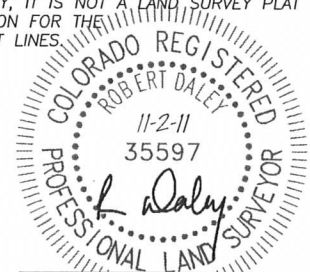
### NOTES:

- 1) BEARINGS FOR THIS MAP ARE ASSUMED AND BASED UPON GPS OBSERVATIONS MADE BETWEEN MONUMENTS LOCATED AT THE NORTHWEST CORNER AND WEST QUARTER CORNER OF SECTION 15, T.7N., R.63W.
- 2) HORIZONTAL DATUM IS NAD83.
- 3) VERTICAL DATUM IS NAVD88 AND ORIGINATES FROM THE LOCAL C.O.R.S. NETWORK, UTILIZING THE GEOID09 MODEL.
- 4) SEE LOCATION DRAWING FOR VISIBLE IMPROVEMENTS WITHIN 400' OF PROPOSED DISTURBED AREA.
- 5) SURFACE USE: PASTURE.

### NEAREST EXISTING WELL:

NO WELLS IN THIS QUARTER SECTION

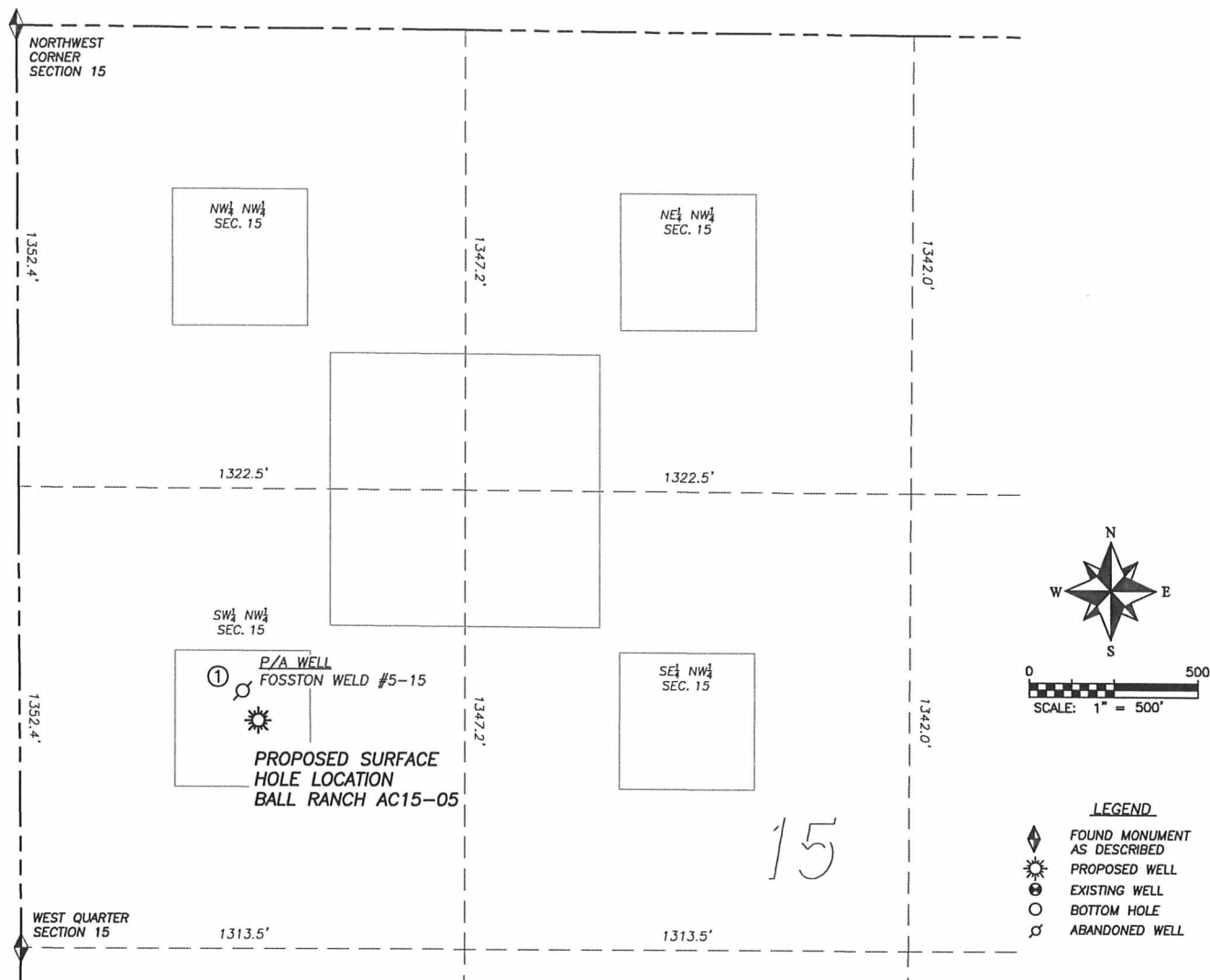
NOTICE: According to Colorado law you MUST commence any legal action based upon any defect in this W.L.C. within three years after you first discover such defect. In no event may any action based upon any such defect in this W.L.C. be commenced more than ten years from the date of the certification shown herein.



FOR AND ON BEHALF OF  
DALEY LAND SURVEYING INC.,  
Robert Daley, PLS 35597

## SITE SKETCH BALL RANCH AC15-05

SECTION 15, TOWNSHIP 7 NORTH, RANGE 63 WEST OF THE 6TH PRINCIPAL MERIDIAN



①

**P/A WELL**  
**FOSSTON/WELD 5-15**  
 SW/NW SEC. 15  
 1945' FNL, 660' FWL  
 LAT. N40.57598°  
 LONG. W104.42961°  
 EL: 4870'  
 LOCATION INFORMATION  
 FROM COGCC DATABASE

## NOTES:

1. THIS DOES NOT REPRESENT A BOUNDARY SURVEY
2. HORIZONTAL DATUM IS NAD83
3. VERTICAL DATUM IS NAVD88 AND ORIGINATES FROM THE LOCAL C.O.R.S. NETWORK, UTILIZING THE GEIOD09 MODEL.