

Well Name: Guttersen 29KDU

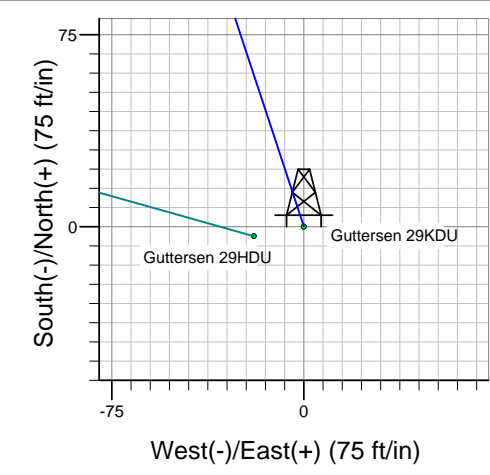
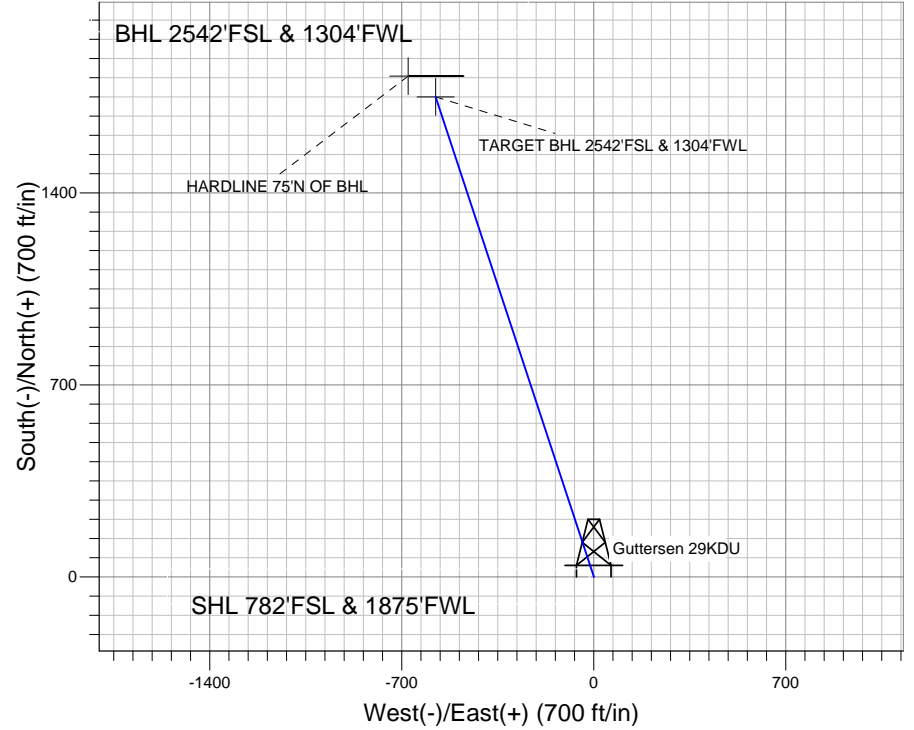
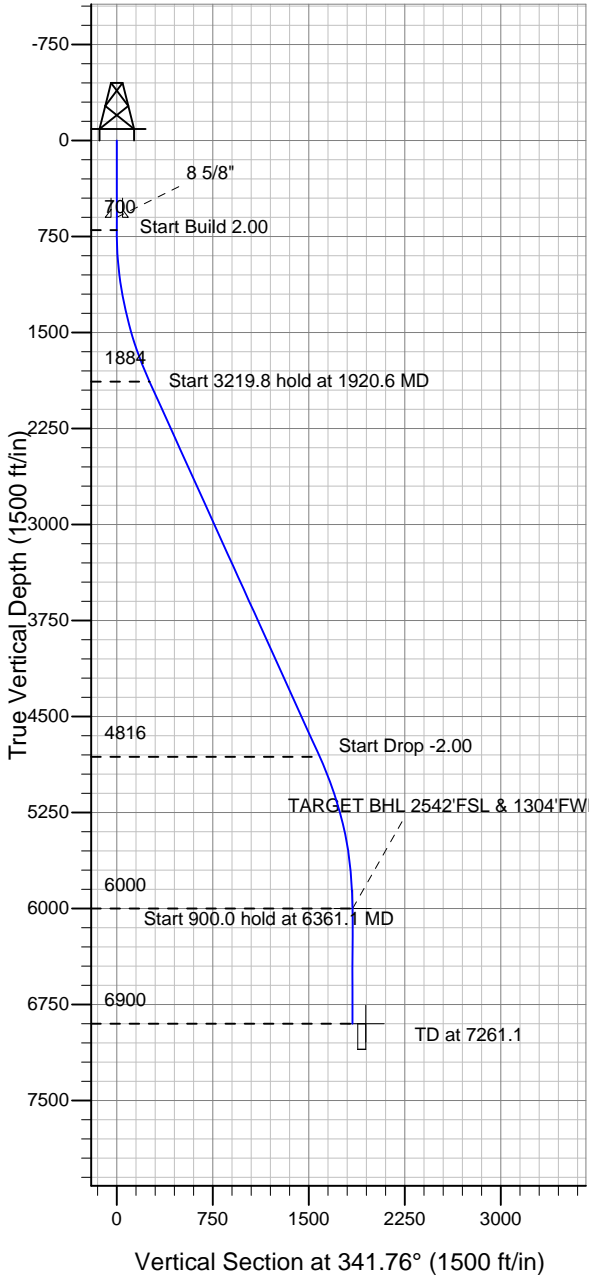
Surface Location: Guttersen 29KDU Pad Sec.29-T4N-R63W
 North American Datum 1983 US State Plane 1983 Colorado Northern Zone

Ground Elevation: 4770.0

+N/-S	+E/-W	Northing	Easting	Latitude	Longitude	Slot
0.0	0.0	1345906.06	3288947.77	40.278280	-104.464360	

Original Well Elev WELL @ 4783.0ft (Original Well Elev)

PETROLEUM DEVELOPMENT CORP Weld County CO



Guttersen 29KDU Pad Sec.29-T4N-R63W
 Guttersen 29KDU
 Plan #1 (2-16-11)
 6:52, February 22 2011

Azimuths to True North
 Magnetic North: 8.74°

Magnetic Field
 Strength: 53134.8snT
 Dip Angle: 67.01°
 Date: 2/16/2011
 Model: IGRF2010

WELLBORE TARGET DETAILS (LAT/LONG)

Name	TVD	+N/-S	+E/-W	Latitude	Longitude	Shape
TARGET BHL 2542'FSL & 1304'FWL	6000.0	1750.4	-576.9	40.283085	-104.466428	Point
HARDLINE 75'N OF BHL	6900.0	1825.4	-676.9	40.283291	-104.466786	Polygon

SECTION DETAILS

Sec	MD	Inc	Azi	TVD	+N/-S	+E/-W	DLeg	TFace	VSec	Target
1	0.0	0.00	0.00	0.0	0.0	0.0	0.00	0.00	0.0	
2	700.0	0.00	0.00	700.0	0.0	0.0	0.00	0.00	0.0	
3	1920.6	24.41	341.76	1884.0	243.3	-80.2	2.00	341.76	256.1	
4	5140.4	24.41	341.76	4816.0	1507.1	-496.7	0.00	0.00	1586.9	
5	6361.1	0.00	0.00	6000.0	1750.4	-576.9	2.00	180.00	1843.0	TARGET BHL 2542'FSL & 1304'FWL
6	7261.1	0.00	0.00	6900.0	1750.4	-576.9	0.00	0.00	1843.0	