
XTO ENERGY INC EBUSINESS

R&G 26-3

La Plata County , Colorado

Cement Production Casing

08-Nov-2011

Job Site Documents

The Road to Excellence Starts with Safety

Sold To #: 353810	Ship To #: 2888730	Quote #:	Sales Order #: 9046559
Customer: XTO ENERGY INC EBUSINESS		Customer Rep: NIETZEL, MARK	
Well Name: R&G	Well #: 26-3	API/UWI #: 05-067-09862	
Field:	City (SAP): IGNACIO	County/Parish: La Plata	State: Colorado
Contractor: AZTEC WELL SERVICE	Rig/Platform Name/Num: AWS 580		
Job Purpose: Cement Production Casing			
Well Type: Producing Well	Job Type: Cement Production Casing		
Sales Person: TALLMAN, JESS	Srv Supervisor: SLAUGHTER, JESSE	MBU ID Emp #: 454315	

Job Personnel

HES Emp Name	Exp Hrs	Emp #	HES Emp Name	Exp Hrs	Emp #	HES Emp Name	Exp Hrs	Emp #
BATH, KYLE Thomas	12.5	477632	GONZALES, MATTHEW Lee	12.5	479805	KEERAN, RYAN Matthew	12.5	476160
RAMSEY, STANTON Michael	12.5	477609	SLAUGHTER, JESSE Dean	12.5	454315			

Equipment

HES Unit #	Distance-1 way	HES Unit #	Distance-1 way	HES Unit #	Distance-1 way	HES Unit #	Distance-1 way
10011433C	60 mile	10025039	60 mile	10296152C	60 mile	10724579	60 mile
10897797	60 mile	11583931	60 mile				

Job Hours

Date	On Location Hours	Operating Hours	Date	On Location Hours	Operating Hours	Date	On Location Hours	Operating Hours
11-7-2011	5	0	11-08-2011	7.5	3			

TOTAL Total is the sum of each column separately

Job				Job Times			
Formation Name				Date	Time	Time Zone	
Formation Depth (MD)	Top	Bottom		Called Out	07 - Nov - 2011	15:00	MST
Form Type	BHST			On Location	07 - Nov - 2011	19:00	MST
Job depth MD	3285. ft	Job Depth TVD	3285. ft	Job Started	08 - Nov - 2011	04:39	MST
Water Depth		Wk Ht Above Floor	4. ft	Job Completed	08 - Nov - 2011	05:59	MST
Perforation Depth (MD)	From	To		Departed Loc	08 - Nov - 2011	07:30	MST

Well Data

Description	New / Used	Max pressure psig	Size in	ID in	Weight lbm/ft	Thread	Grade	Top MD ft	Bottom MD ft	Top TVD ft	Bottom TVD ft
7 7/8" Open Hole				7.875				334.	3285.	334.	3298.
5 1/2" Production Casing	Unknown		5.5	4.892	17.		J-55	.	3286.	.	3100.
8 5/8" Surface Casing	Unknown		8.625	8.097	24.		J-55	.	334.	.	334.

Sales/Rental/3rd Party (HES)

Description	Qty	Qty uom	Depth	Supplier
PLUG,CMTG,TOP,5 1/2,HWE,4.38 MIN/5.09 MA	1	EA		
SUGAR, GRANULATED, IMPERIAL	150	LB		

Tools and Accessories

Type	Size	Qty	Make	Depth	Type	Size	Qty	Make	Depth	Type	Size	Qty	Make
Guide Shoe					Packer					Top Plug	5.5	1	HES
Float Shoe					Bridge Plug					Bottom Plug			
Float Collar					Retainer					SSR plug set			
Insert Float										Plug Container	5.5	1	HES
Stage Tool										Centralizers			

Miscellaneous Materials

Gelling Agt	Conc	Surfactant	Conc	Acid Type	Qty	Conc	%
Treatment Fld	Conc	Inhibitor	Conc	Sand Type	Size	Qty	

Fluid Data

Stage/Plug #: 1									
Fluid #	Stage Type	Fluid Name	Qty	Qty uom	Mixing Density lbm/gal	Yield ft ³ /sk	Mix Fluid Gal/sk	Rate bbl/min	Total Mix Fluid Gal/sk
1	MUD FLUSH III	MUD FLUSH III - SBM (528788)	20.00	bbl	8.4	.0	.0	4	
2	Lead Cement	PRB-2 - SBM (321500)	360.0	sacks	12.5	2.26	12.5	6	12.5
	0.3 %	D-AIR 3000 (101007446)							
	0.4 %	FE-2 (100001615)							
	2.5 lbm	KOL-SEAL, BULK (100064233)							
	0.125 lbm	POLY-E-FLAKE (101216940)							
	12.495 Gal	FRESH WATER							
3	Tail Cement	PRB-2 - SBM (321500)	100.0	sacks	13.5	1.82	9.23	6	9.23
	0.3 %	D-AIR 3000 (101007446)							
	0.4 %	FE-2 (100001615)							
	2.5 lbm	KOL-SEAL, BULK (100064233)							
	0.125 lbm	POLY-E-FLAKE (101216940)							
	9.23 Gal	FRESH WATER							
4	H2O Displacement	FRESH WATER	75.2	bbl	8.33	.0	.0	6	
Calculated Values		Pressures		Volumes					
Displacement	75.2	Shut In: Instant		Lost Returns	NO	Cement Slurry	180.4	Pad	
Top Of Cement	SURFACE	5 Min		Cement Returns	65	Actual Displacement	75.2	Treatment	
Frac Gradient		15 Min		Spacers	20	Load and Breakdown		Total Job	276
Rates									
Circulating	7	Mixing	6	Displacement	6	Avg. Job	6.5		
Cement Left In Pipe	Amount	42.22 ft	Reason	Shoe Joint					
Frac Ring # 1 @	ID	Frac ring # 2 @	ID	Frac Ring # 3 @	ID	Frac Ring # 4 @	ID		
The Information Stated Herein Is Correct				Customer Representative Signature					

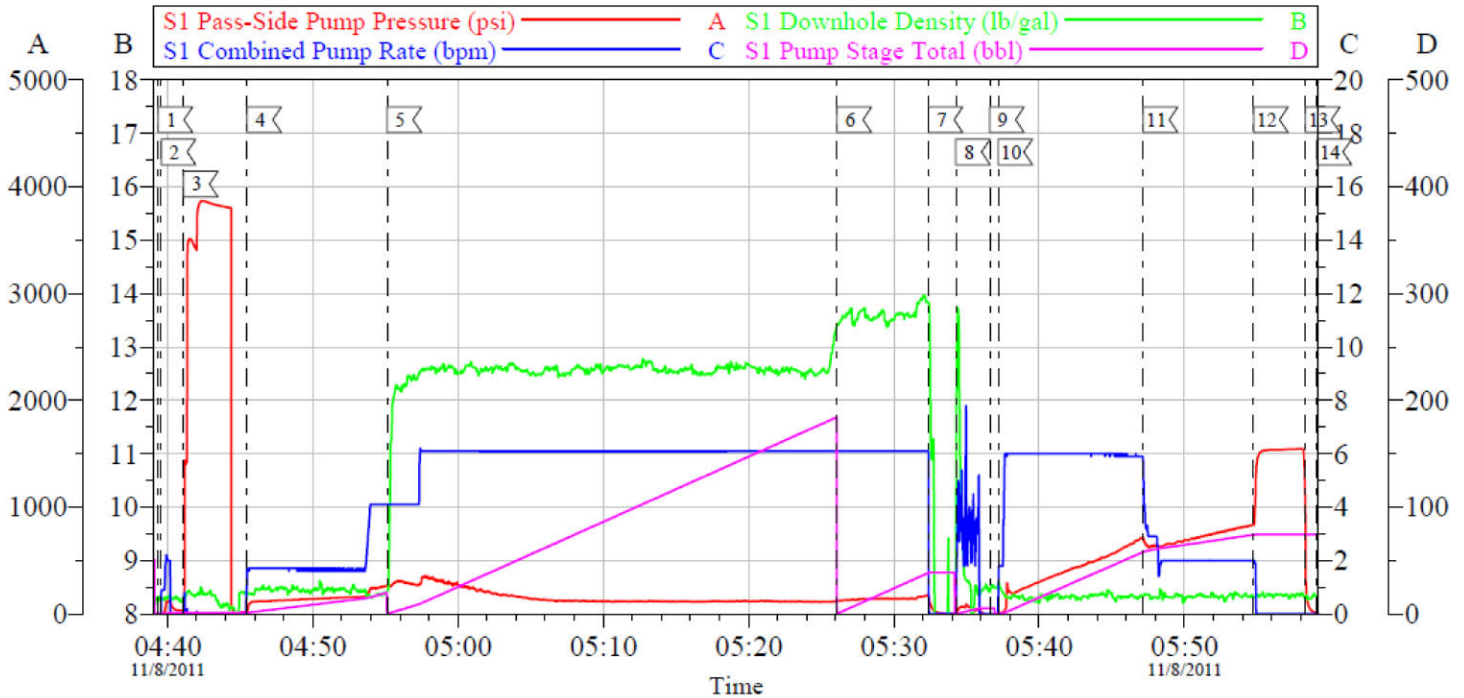
The Road to Excellence Starts with Safety

Sold To #: 353810		Ship To #: 2888730		Quote #:		Sales Order #: 9046559	
Customer: XTO ENERGY INC EBUSINESS				Customer Rep: NIETZEL, MARK			
Well Name: R&G			Well #: 26-3			API/UWI #: 05-067-09862	
Field:		City (SAP): IGNACIO		County/Parish: La Plata		State: Colorado	
Legal Description:							
Lat: N 0 deg. OR N 0 deg. 0 min. 0 secs.				Long: E 0 deg. OR E 0 deg. 0 min. 0 secs.			
Contractor: AZTEC WELL SERVICE			Rig/Platform Name/Num: AWS 580				
Job Purpose: Cement Production Casing						Ticket Amount:	
Well Type: Producing Well			Job Type: Cement Production Casing				
Sales Person: TALLMAN, JESS			Srv Supervisor: SLAUGHTER, JESSE			MBU ID Emp #: 454315	

Activity Description	Date/Time	Cht #	Rate bbl/min	Volume bbl		Pressure psig		Comments
				Stage	Total	Tubing	Casing	
Call Out	11/07/2011 15:00							TD 3298 FT, TP 3285 FT, SHOE 42.22 FT, CSG 5 1/2 IN 17 LB/FT, HOLE 7 7/8 IN MUD WT 10.1 PPG
Pre-Convoy Safety Meeting	11/07/2011 16:50							WITH ALL HES PERSONNEL
Crew Leave Yard	11/07/2011 17:00							
Arrive At Loc	11/07/2011 19:00							RIG WAS PULLING PIPE
Assessment Of Location Safety Meeting	11/08/2011 02:40							WITH ALL HES PERSONNEL
Other	11/08/2011 02:45							SPOT EQUIPMENT
Pre-Rig Up Safety Meeting	11/08/2011 02:55							WITH ALL HES PERSONNEL
Rig-Up Equipment	11/08/2011 03:00							
Pre-Job Safety Meeting	11/08/2011 04:30							WITH ALL PERSONNEL ON LOCATION
Start Job	11/08/2011 04:39							
Other	11/08/2011 04:39		2	2			120.0	FRESH WATER
Test Lines	11/08/2011 04:41							TESTED LINES TO 3869 PSI PRESSURE HOLDING
Pump Spacer 1	11/08/2011 04:45		4	20			250.0	MUDFLUSH III
Pump Lead Cement	11/08/2011 04:55		6	147.5			130.0	360 SKS AT 12.5 PPG, 2.3 FT3/SK, 12.67 GAL/SK
Pump Tail Cement	11/08/2011 05:26		6	32.9			130.0	100 SKS AT 13.5 PPG, 1.85 FT3/SK, 9.34 GAL/SK

Activity Description	Date/Time	Cht #	Rate bbl/min	Volume bbl		Pressure psig		Comments
				Stage	Total	Tubing	Casing	
Shutdown	11/08/2011 05:32							
Clean Lines	11/08/2011 05:34							WASH PUMPS AND LINES TO PIT
Drop Top Plug	11/08/2011 05:36							PLUG LAUNCHED
Pump Displacement	11/08/2011 05:37		6	65.2			640.0	FRESH WATER
Slow Rate	11/08/2011 05:47		2	10			824.0	SLOW RATE 10 BBLS PRIOR TO CALCULATED DISPLACEMENT.
Bump Plug	11/08/2011 05:54		2		75.2		1535.0	PLUG BUMPED
Check Floats	11/08/2011 05:58							FLOATS HOLDING. HES RETURNED 1/2 BBL H2O TO PUMP
End Job	11/08/2011 05:59							PIPE WAS STATIC DURING JOB, GOOD CIRCULATION THROUGHOUT JOB, HES RETURNED 65 BBL CEMENT TO SURFACE
Pre-Rig Down Safety Meeting	11/08/2011 06:05							WITH ALL HES PERSONNEL
Rig-Down Equipment	11/08/2011 06:10							
Pre-Convoy Safety Meeting	11/08/2011 07:25							WITH ALL HES PERSONNEL
Crew Leave Location	11/08/2011 07:30							
Comment	11/08/2011 07:31							THANK YOU FOR USING HALLIBURTON CEMENT DEPARTMENT. JESSE SLAUGHTER AND CREW

XTO-R&G 26-3 5 1/2 PRODUCTION



Local Event Log

1 START JOB	04:39:22	2 PRIME LINES	04:39:35	3 TEST LINES	04:41:07
4 PUMP MUDFLUSH	04:45:29	5 PUMP LEAD CEMENT	04:55:07	6 PUMP TAIL CEMENT	05:26:06
7 SHUTDOWN	05:32:22	8 CLEAN PUMPS AND LINES	05:34:16	9 DROP TOP PLUG	05:36:36
10 PUMP DISPLACEMENT	05:37:11	11 SLOW RATE	05:47:11	12 BUMP PLUG	05:54:46
13 CHECK FLOATS	05:58:21	14 END JOB	05:59:09		

Customer: XTO	Job Date: 08-Nov-2011	Sales Order #: 9046559
Well Description: R&G 26-3	Job Type: PRODUCTION	ADC Used: YES
Customer Rep: MARK NIETZEL	Cement Supervisor: JESSE SLAUGHTER	Elite #: KYLE BATH

OptiCem v6.4.10
08-Nov-11 06:07