

Company		Apache Canyon 08-06	
Well		PurgatorieRiver	
Field		Las Animas	
County		Co	
State		Co	
Company		XTO ENERGY INC.	
Well		Apache Canyon 08-06	
Field		PurgatorieRiver	
County		Las Animas	
State		Co	
Location:		API # : 05-071-09682-00	
SEC 8 TWP 34S RGE 67W		1648' Fnl & 1712' FWI	
Permanent Datum		GL	Elevation 7820'
Log Measured From		GL	
Drilling Measured From		GL	
Other Services		Devi	
Date		Nov-14-11	
Run Number	2		
Depth Driller	2350		
Depth Logger	2268		
Bottom Logged Interval	2266		
Top Log Interval	Surface		
Open Hole Size	7 7/8		
Type Fluid	water		
Density / Viscosity	///		
Max. Recorded Temp.	///		
Estimated Cement Top	Surface		
Time Well Ready	09:30		
Time Logger on Bottom	09:50		
Equipment Number	T601		
Location	Trinidad		
Recorded By	Tyler Patterson		
Witnessed By			
Borehole Record		Tubing Record	
Run Number	Bit	From	To
		Size	Weight
			From
			To
Casing Record	Size	Wgt/Ft	Top
Surface String	8 5/8		Bottom
Prot. String			500
Production String	5 1/2		TD
Liner			

<<< Fold Here >>>

All interpretations are opinions based on inferences from electrical or other measurements and we cannot and do not guarantee the accuracy or correctness of any interpretation, and we shall not, except in the case of gross or willful negligence on our part, be liable or responsible for any loss, costs, damages, or expenses incurred or sustained by anyone resulting from any interpretation made by any of our officers, agents or employees. These interpretations are also subject to our general terms and conditions set out in our current Price Schedule.

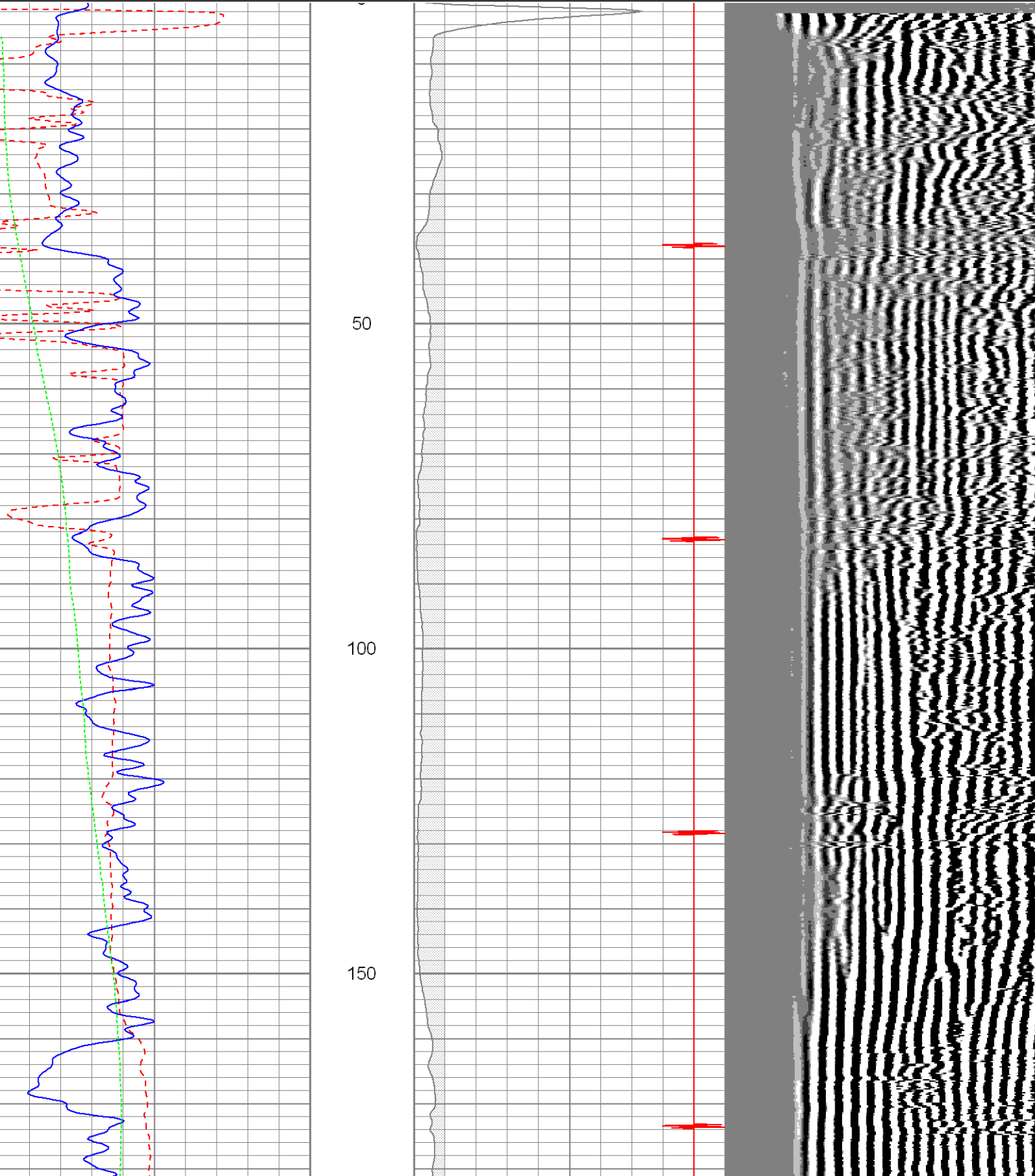
Comments

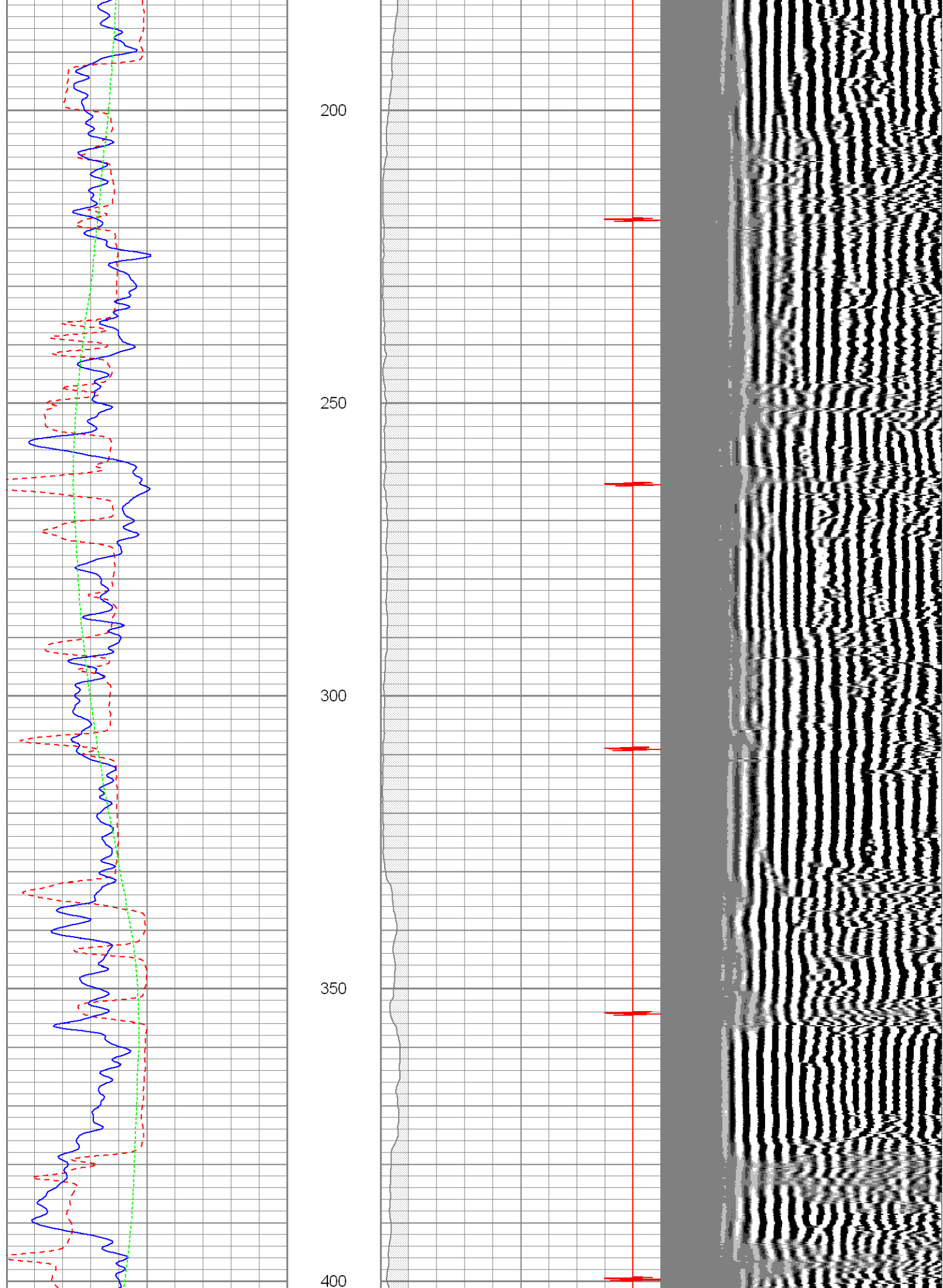
Directions

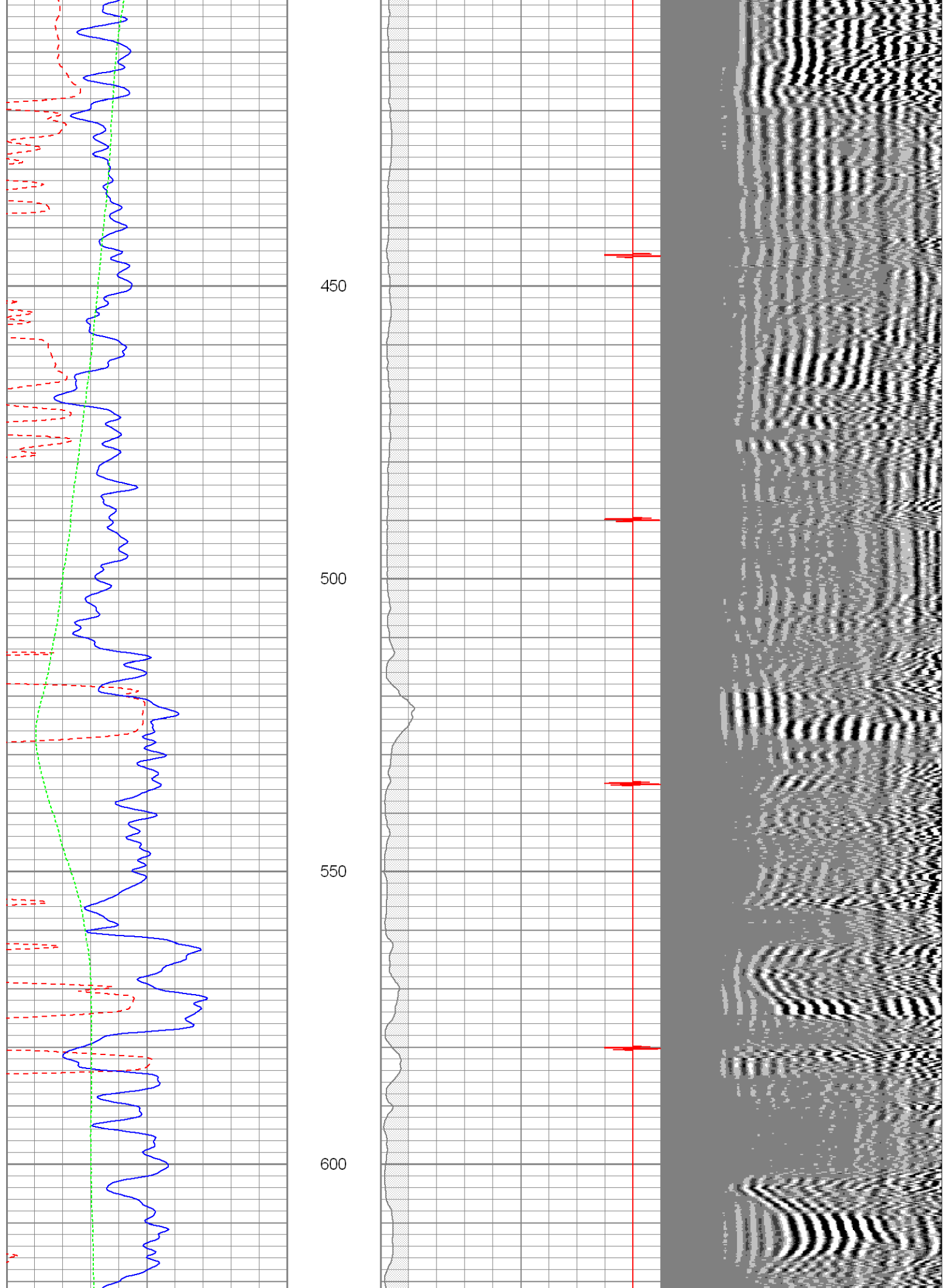
1st Bosque to alamosito canyon, Take the 2nd left after the compressor station, go to the top of the hill, stay right and follow road to location.

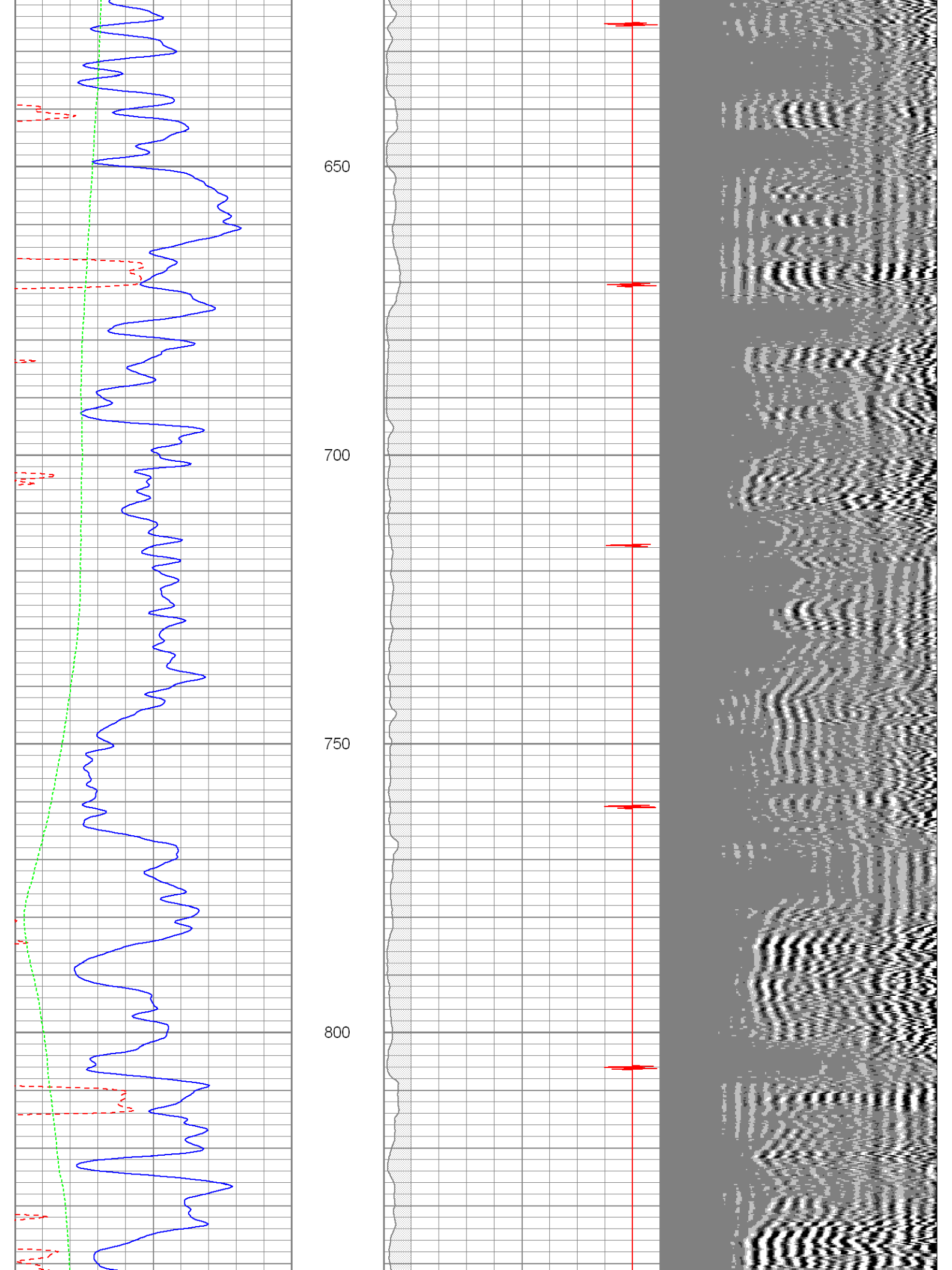
Database File: ac 08-06cbl.db
Dataset Pathname: pass3
Presentation Format: cbldig
Dataset Creation: Mon Nov 14 10:40:00 2011 by Log SCH 110722
Charted by: Depth in Feet scaled 1:240

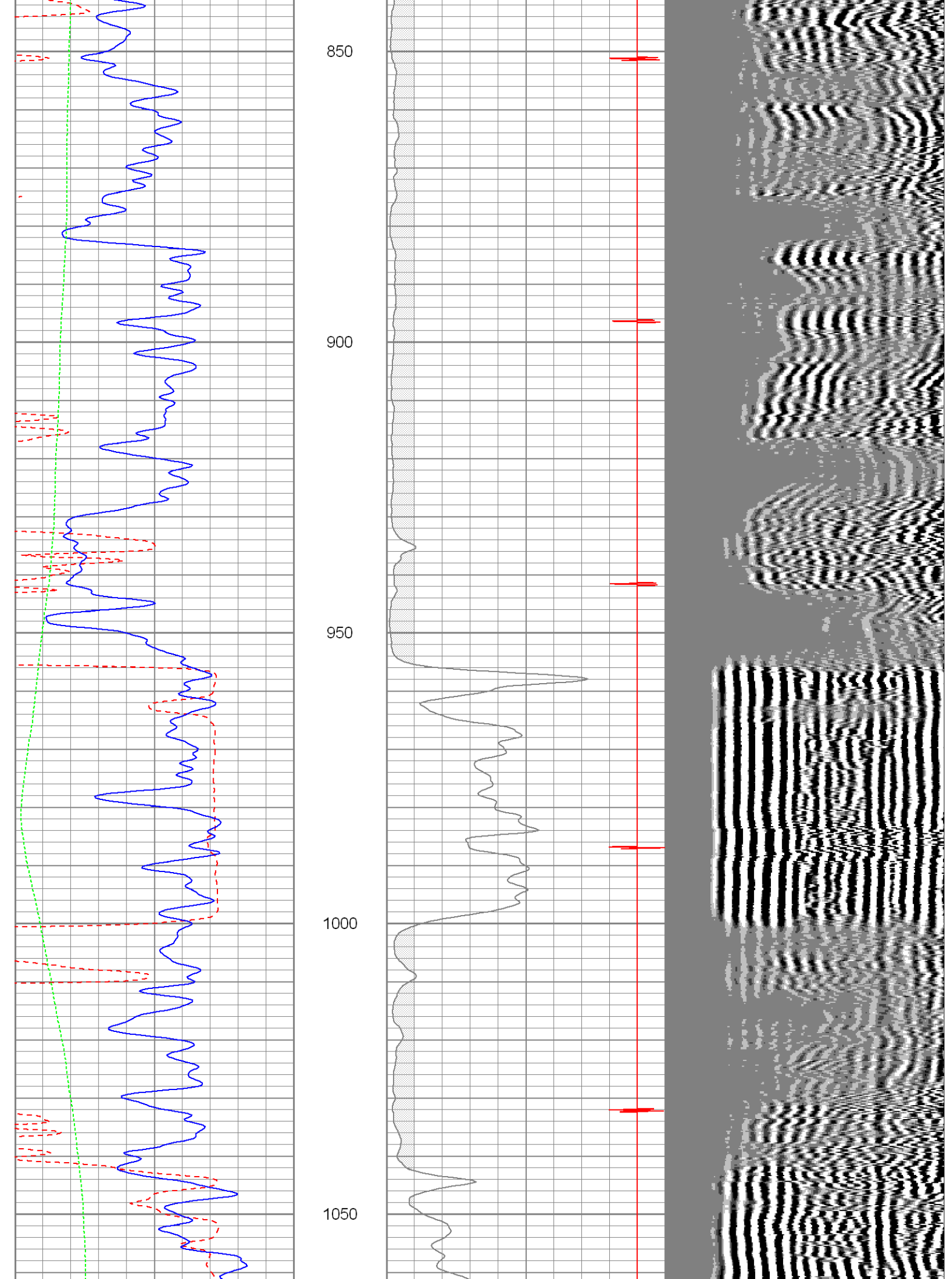
440	TT3 (usec)	220	0	AMP3 (mV)	100	200	Variable Density	1200
0	GR (GAPI)	200	18	CCL	-2			
0	DEVI (°)	10						

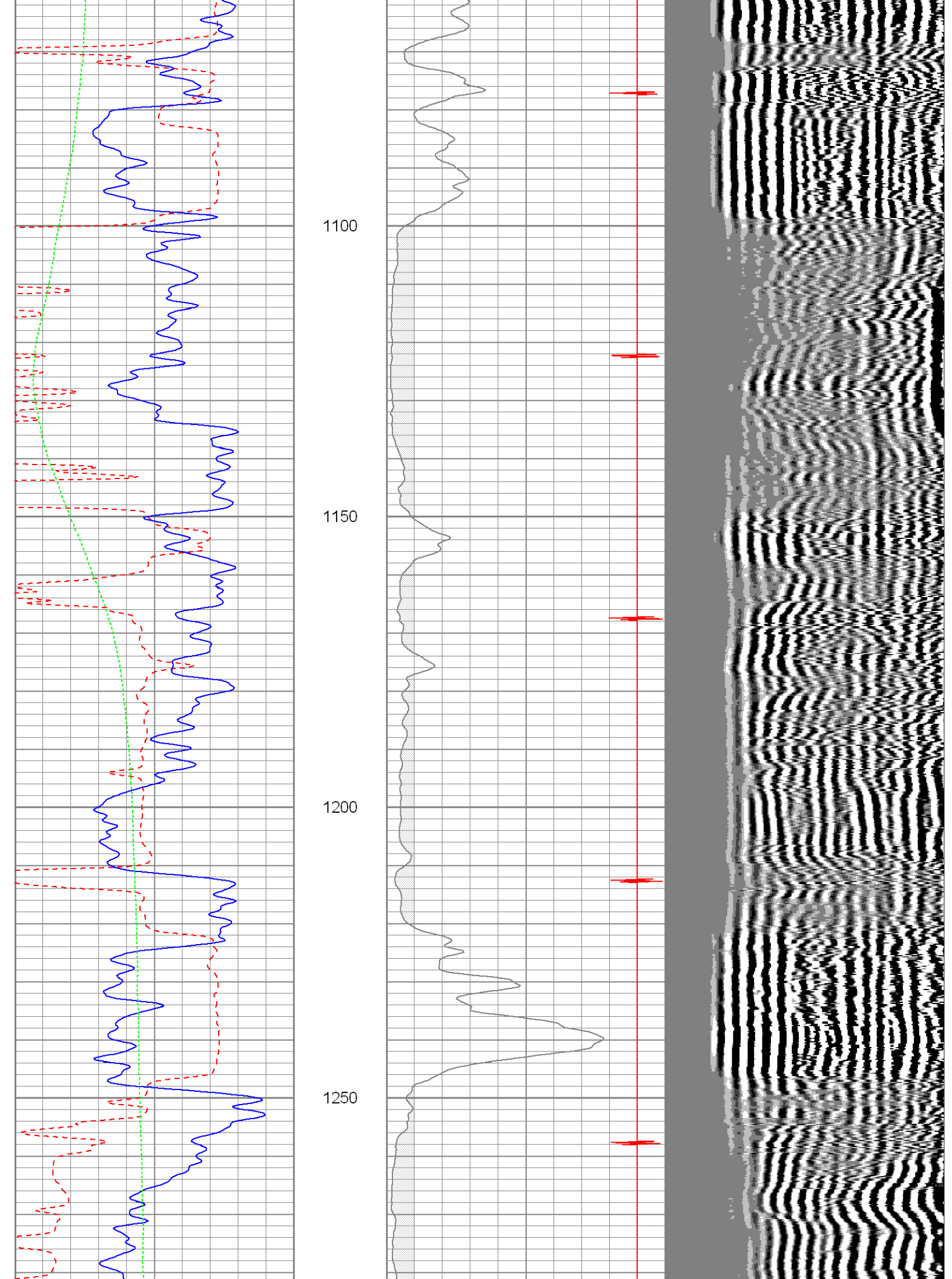


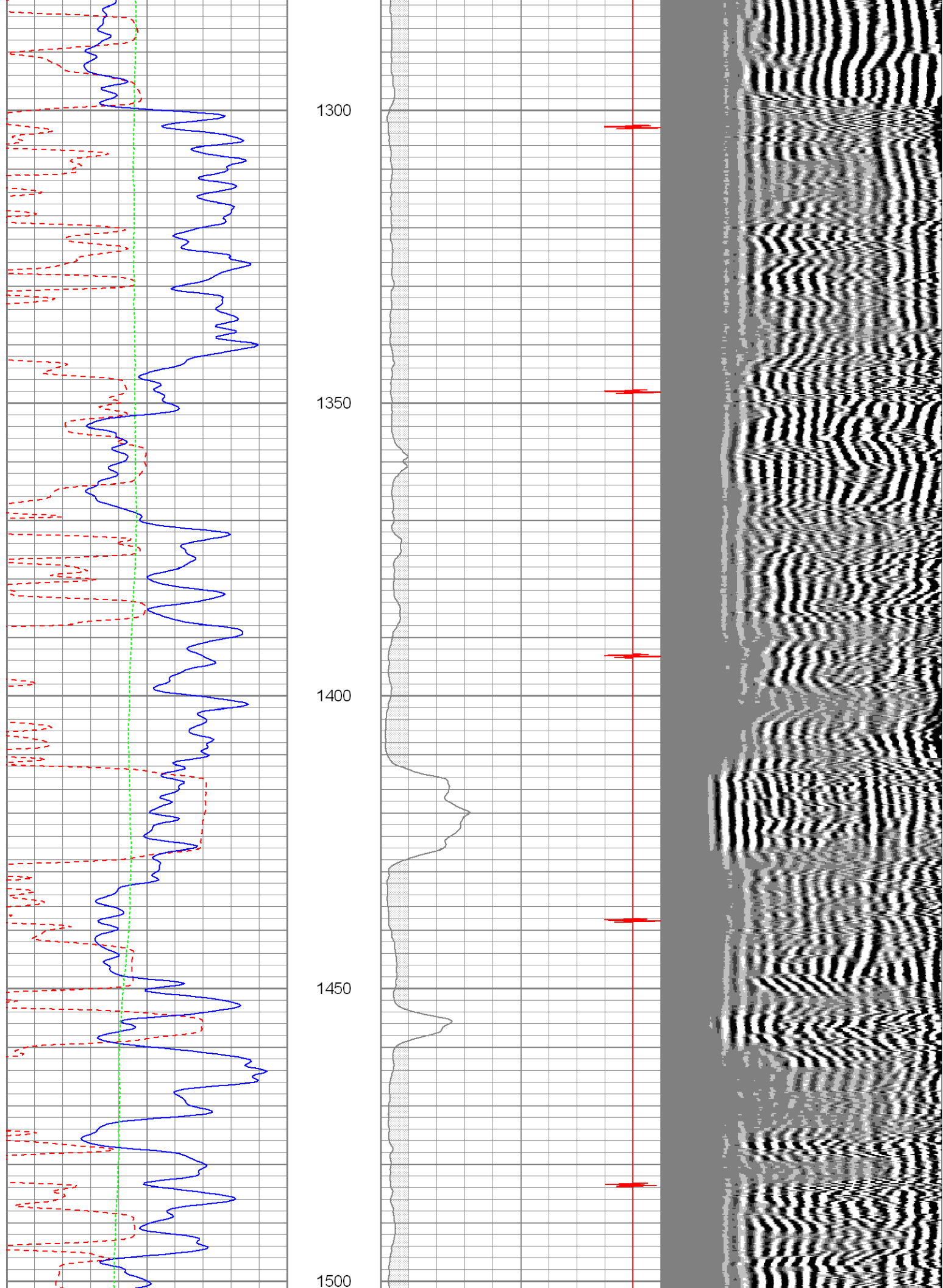


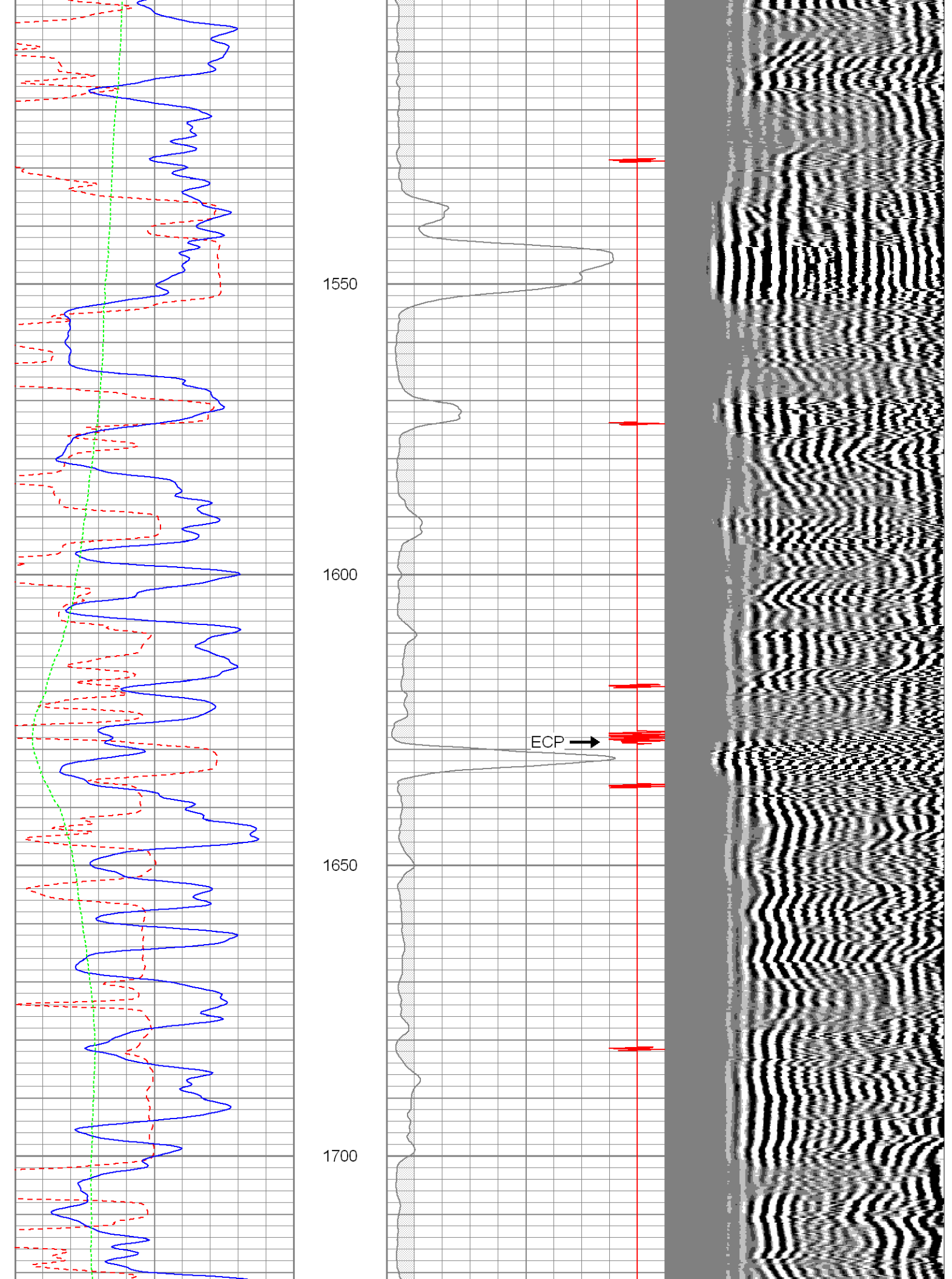


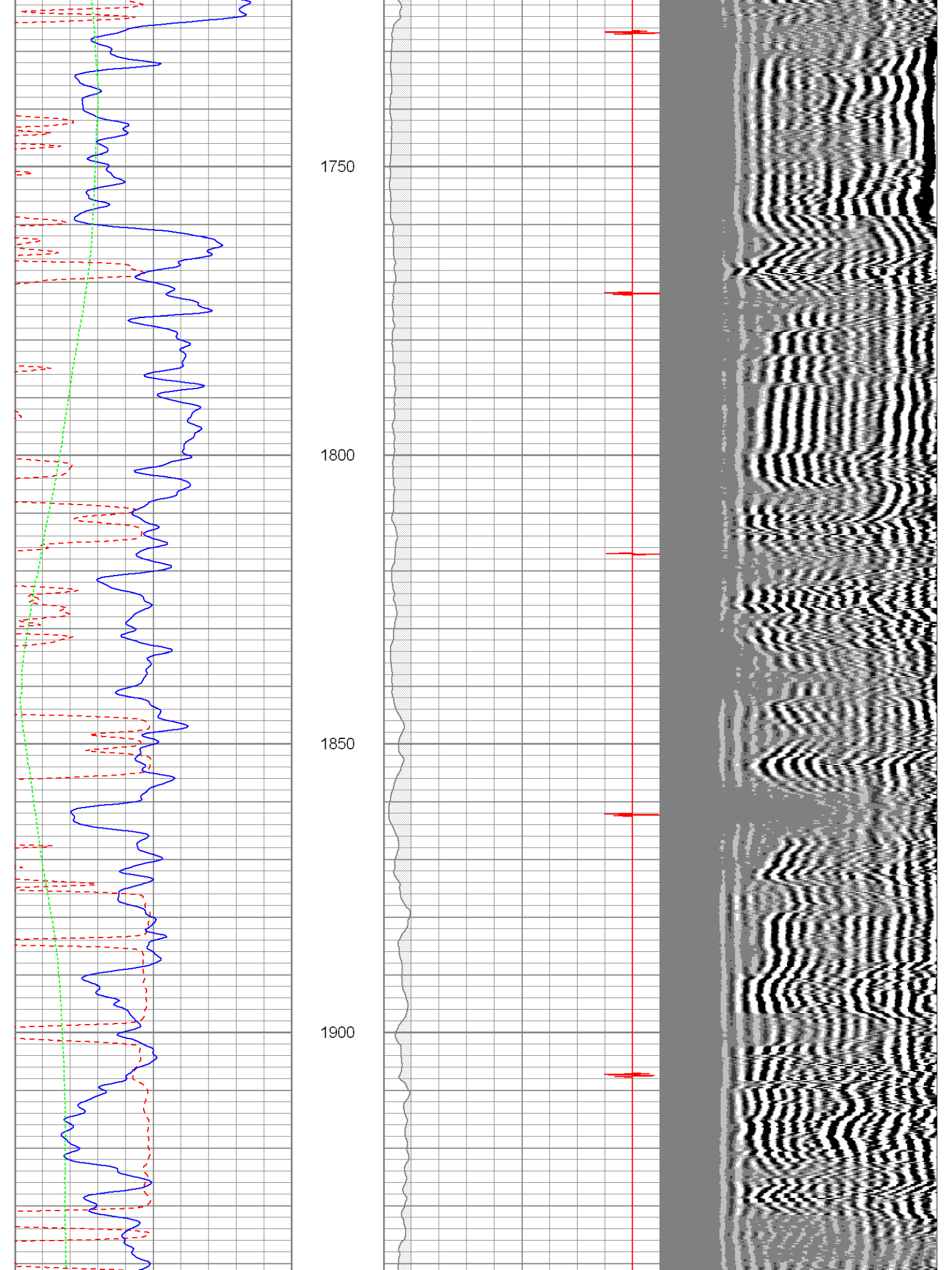


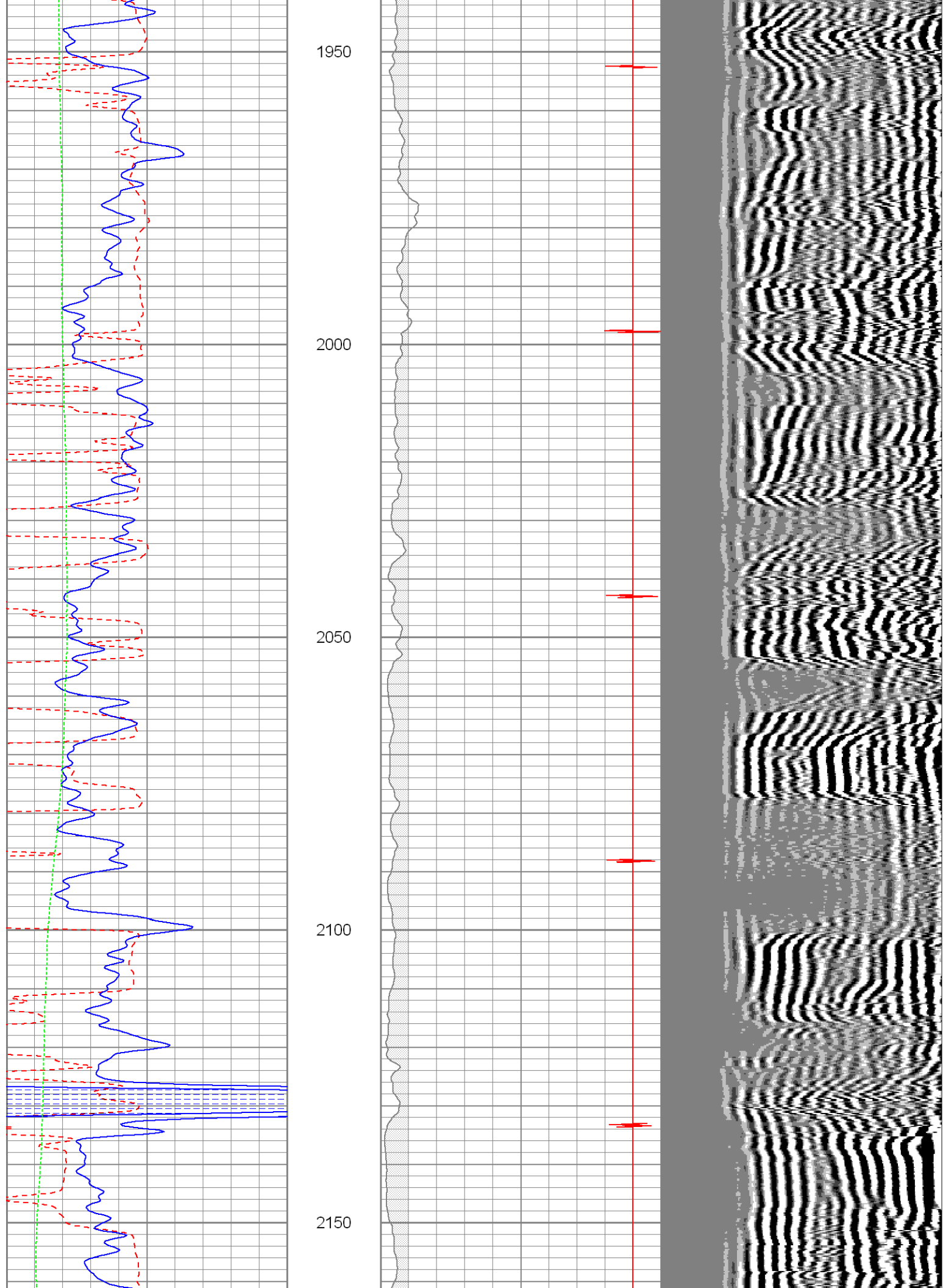


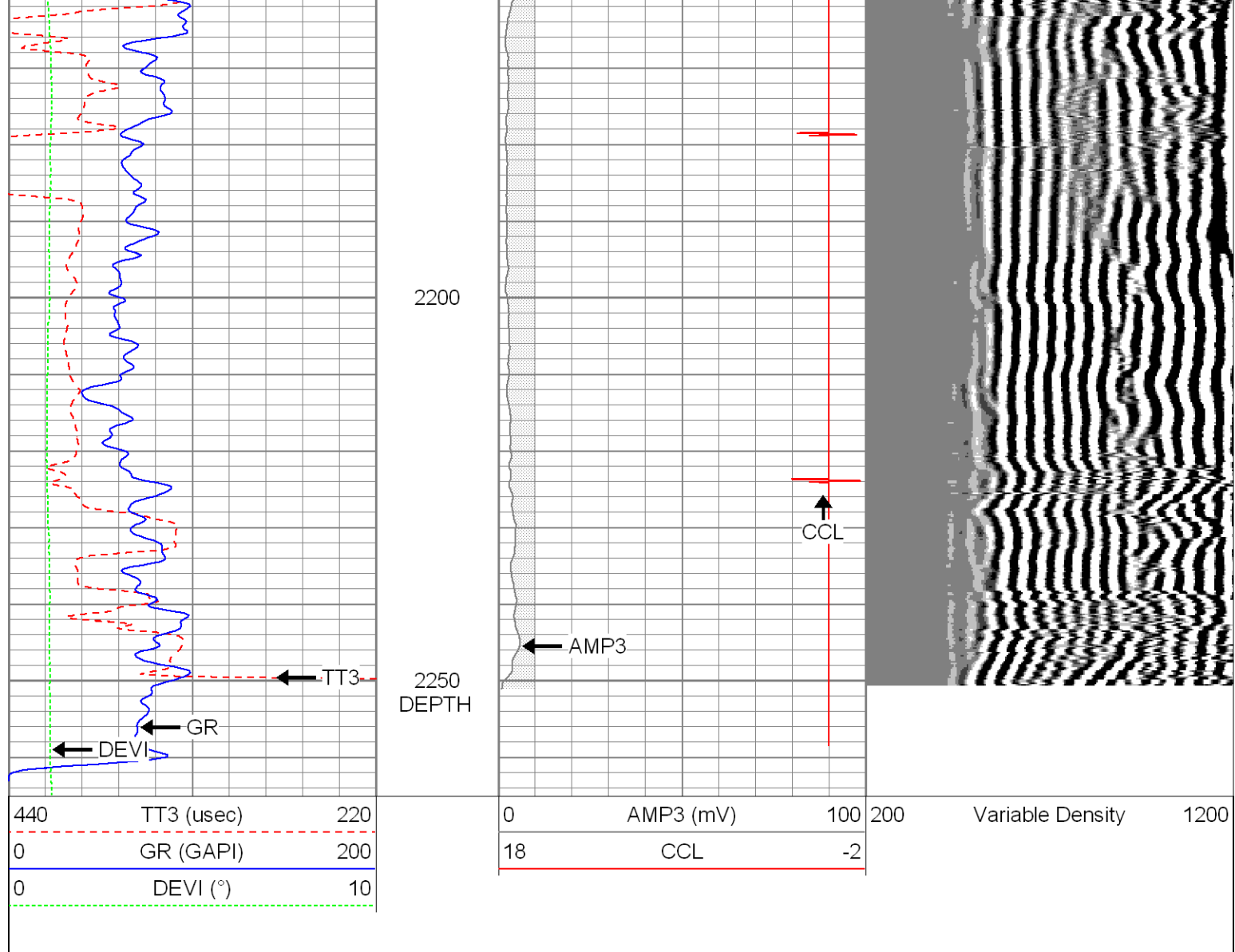






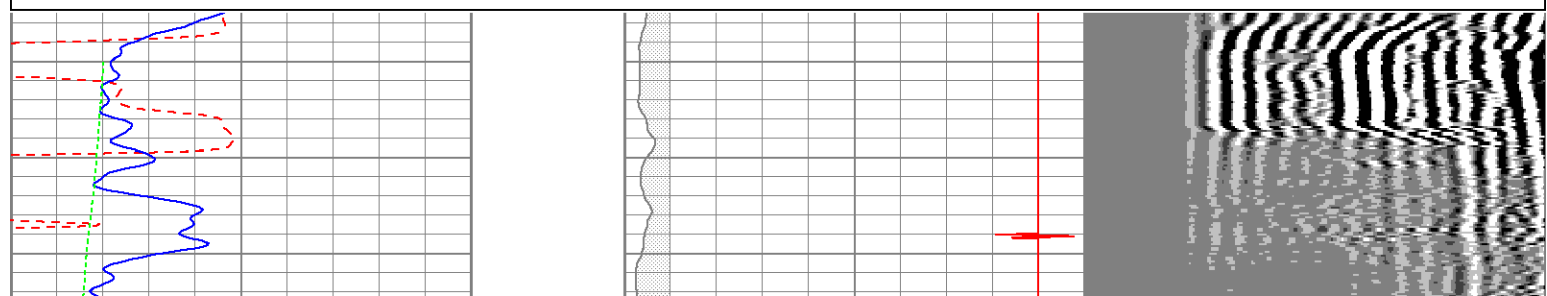
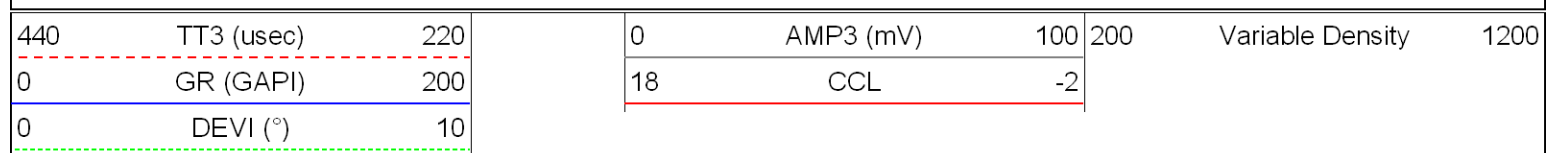


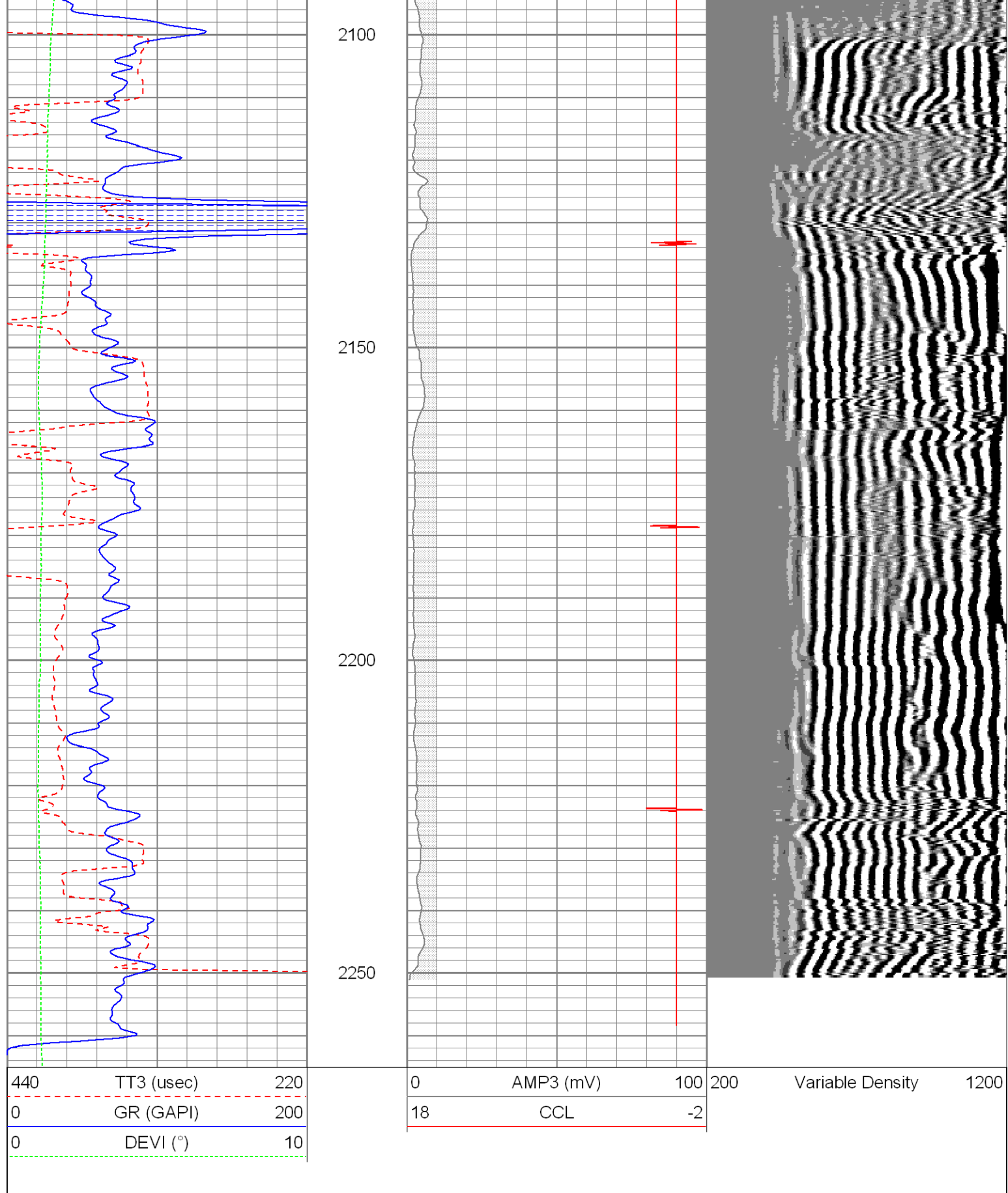




Repeat Pass

Database File: ac 08-06cbl.db
 Dataset Pathname: pass2
 Presentation Format: cbldig
 Dataset Creation: Mon Nov 14 11:57:52 2011 by Calc SCH 110722
 Charted by: Depth in Feet scaled 1:240





Calibration Report

Database File: ac 08-06cbl.db
Dataset Pathname: pass3
Dataset Creation: Mon Nov 14 10:40:00 2011 by Log SCH 110722

Serial Number:	081014	
Tool Model:	275D_INC	
Performed:	Thu Sep 02 12:34:39 2010	
Calibrator Value:	1.0	GAPI
Background Reading:	0.0	cps
Calibrator Reading:	1.0	cps
Sensitivity:	1.0000	GAPI/cps

Inclinometer Calibration Report

Performed:	Thu Sep 02 12:35:05 2010				
	Low Read.	High Read.	Low Ref.	High Ref.	
X Accelerometer	-3589.40	3580.00	-1.00	1.00	gee
Y Accelerometer	-3673.00	3502.20	-1.00	1.00	gee
Z Accelerometer					

Cement Bond Log Calibration Report

Serial Number:	080201		
Tool Model:	DigitalCBL		
Performed:	Thu Oct 27 10:05:24 2011		
Depth:	729.191	ft	
Casing Diameter:	5.5	in	
	3' Spacing	5' Spacing	
Signal Zero:	1	0	mV
Calibrated Amplitude:	71.921	71.921	mV
Reading at Signal Zero:	-0.0012207	-0.00124512	V
Reading in Free Pipe:	2	-0.975732	V
Gain:	35.4389	-73.8039	
Offset:	1.04326	-0.0918946	

Sensor	Offset (ft)	Schematic	Description	Len (ft)	OD (in)	Wt (lb)
WVF3	15.38		Probedig-DigitalCBL (080201)	8.77	2.75	92.00
WVF5	14.38		2 3/4 Bond Tool			
			275	2.94	2.75	10.00
			2 3/4" Centralizer			
			sdschd	0.75	1.44	3.00
CCL	6.44					

