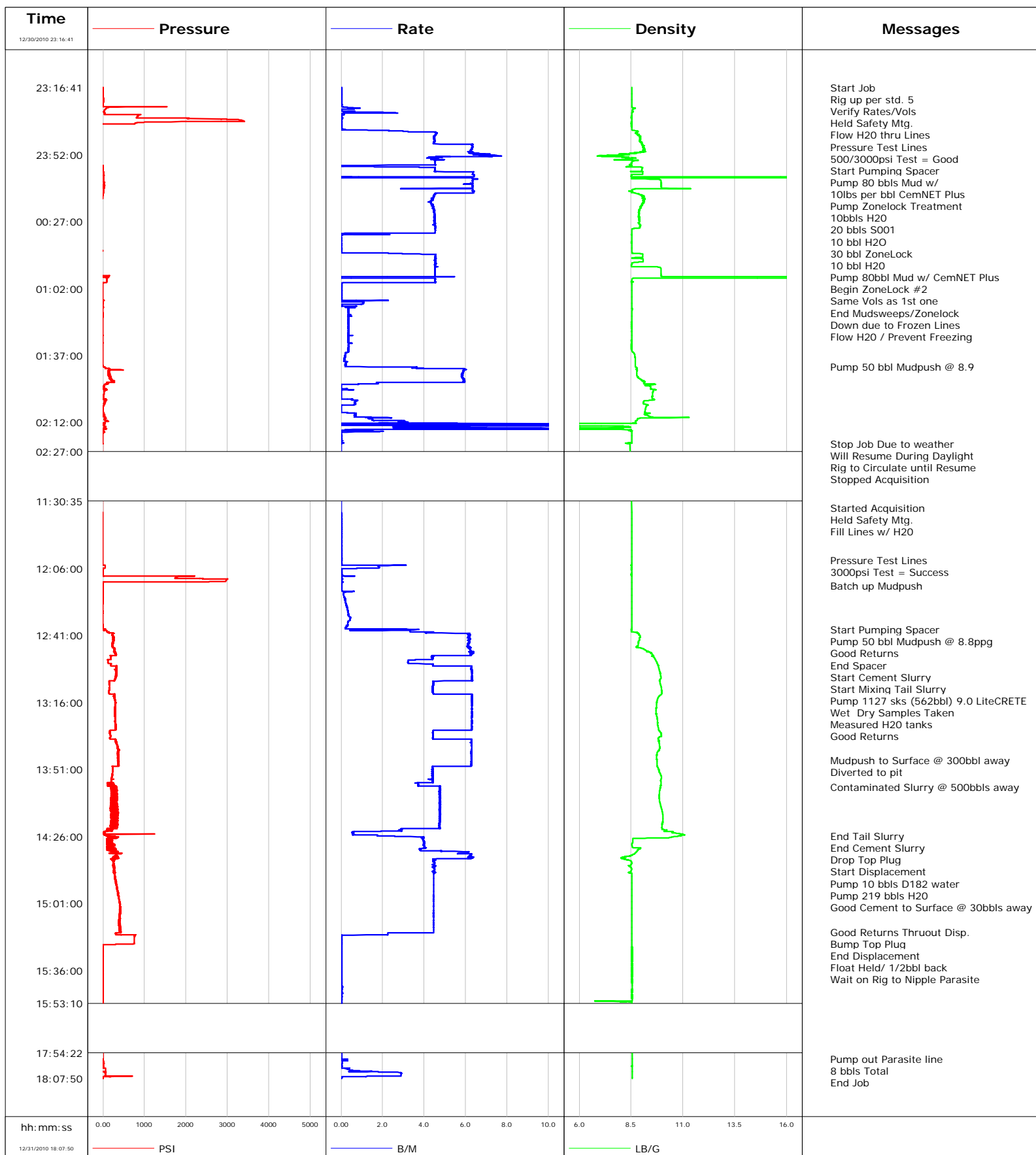


Well SGU 8504D-25 F25 496
Field Story Gulch
Engineer B. Farnham
Country United States

Client Encana Oil Gas
SIR No. 465807
Job Type 9 5/8" Surface
Job Date 12-30-2010



Well SGU 8504D-25 F25 496 8504D-25			Field Story Gulch		Job Start Dec/30/2010	Customer Encana Oil & Gas	Job Number 465807
Date	Time 24-hr clock	Treating Pressure PSI	Flow Rate B/M	Density LB/G	Volume BBL	Message	
12/30/2010	23:23:24	12	0.0	8.53	0.2		
12/30/2010	23:23:27					Pressure Test Lines	
12/30/2010	23:23:27	11	0.0	8.53	0.2		
12/30/2010	23:23:31					500/3000psi Test = Good	
12/30/2010	23:23:31	12	0.0	8.53	0.2		
12/30/2010	23:23:54	-3	0.0	8.53	0.2		
12/30/2010	23:24:24	13	0.0	8.53	0.2		
12/30/2010	23:24:54	3	0.0	8.53	0.2		
12/30/2010	23:25:24	-0	0.0	8.53	0.2		
12/30/2010	23:25:54	3	0.0	8.53	0.3		
12/30/2010	23:26:24	5	0.0	8.53	0.3		
12/30/2010	23:26:54	5	0.0	8.53	0.3		
12/30/2010	23:27:24	114	0.4	8.55	0.4		
12/30/2010	23:27:54	72	0.6	8.64	0.7		
12/30/2010	23:28:24	46	0.0	8.57	0.9		
12/30/2010	23:28:54	31	0.0	8.57	0.9		
12/30/2010	23:29:24	24	0.2	8.57	1.0		
12/30/2010	23:29:54	31	2.2	8.55	1.4		
12/30/2010	23:30:24	26	0.1	8.53	2.5		
12/30/2010	23:30:54	26	0.0	8.52	2.5		
12/30/2010	23:31:24	848	0.0	8.53	2.5		
12/30/2010	23:31:54	838	0.0	8.53	2.5		
12/30/2010	23:32:24	817	0.0	8.52	2.5		
12/30/2010	23:32:54	2042	0.0	8.52	2.5		
12/30/2010	23:33:24	2838	0.0	8.53	2.6		
12/30/2010	23:33:54	3309	0.0	8.53	2.6		
12/30/2010	23:34:24	3390	0.0	8.53	2.6		
12/30/2010	23:34:54	1234	0.0	8.53	2.6		
12/30/2010	23:35:24	787	0.0	8.52	2.6		
12/30/2010	23:35:54	-2	0.0	8.52	2.6		
12/30/2010	23:36:24	-46	0.0	8.52	2.6		
12/30/2010	23:36:54	-54	0.0	8.52	2.6		
12/30/2010	23:37:24	-67	0.0	8.53	2.6		
12/30/2010	23:37:54	-65	0.0	8.53	2.6		
12/30/2010	23:38:24	-92	0.0	8.53	2.7		
12/30/2010	23:38:54	-107	0.1	8.53	2.7		
12/30/2010	23:39:11					Start Pumping Spacer	
12/30/2010	23:39:11	-105	1.4	8.57	2.8		
12/30/2010	23:39:13					Pump 80 bbls Mud w/	
12/30/2010	23:39:13					10lbs per bbl CemNET Plus	
12/30/2010	23:39:13	-102	1.6	8.57	2.9		
12/30/2010	23:39:24	-96	2.3	8.66	3.3		
12/30/2010	23:39:54	-82	3.2	8.85	4.7		
12/30/2010	23:40:24	-80	4.6	8.76	6.8		
12/30/2010	23:40:54	-80	4.6	8.73	9.1		
12/30/2010	23:41:24	-94	4.5	8.87	11.4		
12/30/2010	23:41:54	-104	4.5	8.88	13.6		
12/30/2010	23:42:24	-85	4.5	8.95	15.9		
12/30/2010	23:42:54	-100	4.5	8.94	18.1		
12/30/2010	23:43:24	-93	4.5	8.95	20.4		
12/30/2010	23:43:54	-105	4.5	8.95	22.6		
12/30/2010	23:44:24	-85	4.5	8.92	24.9		
12/30/2010	23:44:54	-97	4.5	8.90	27.1		
12/30/2010	23:45:24	-88	4.5	8.96	29.4		

Well SGU 8504D-25 F25 496 8504D-25			Field Story Gulch		Job Start Dec/30/2010		Customer Encana Oil & Gas		Job Number 465807	
Date	Time 24-hr clock	Treating Pressure PSI	Flow Rate B/M	Density LB/G	Volume BBL	Message				
12/30/2010	23:46:24	-86	5.6	9.03	33.9					
12/30/2010	23:46:54	-82	6.3	9.04	37.0					
12/30/2010	23:47:24	-95	6.3	9.08	40.2					
12/30/2010	23:47:54	-80	6.3	9.08	43.3					
12/30/2010	23:48:24	-93	6.3	9.11	46.5					
12/30/2010	23:48:54	-77	6.3	9.12	49.6					
12/30/2010	23:49:24	-77	6.3	9.11	52.8					
12/30/2010	23:49:54	-80	6.2	9.10	55.9					
12/30/2010	23:50:24	-82	6.3	9.02	59.0					
12/30/2010	23:50:54	-72	6.2	8.78	62.1					
12/30/2010	23:51:24	-77	6.5	8.66	65.3					
12/30/2010	23:51:54	-73	6.6	8.06	68.7					
12/30/2010	23:52:24	-85	6.6	7.35	72.1					
12/30/2010	23:52:54	-84	6.8	7.17	75.8					
12/30/2010	23:53:24	-84	4.7	8.20	78.2					
12/30/2010	23:53:54	-83	4.4	8.49	80.4					
12/30/2010	23:54:24	-81	4.6	8.28	82.7					
12/30/2010	23:54:54					Pump Zonelock Treatment				
12/30/2010	23:54:54	-82	4.5	8.85	85.0					
12/30/2010	23:55:13					10bbbls H2O				
12/30/2010	23:55:13	-81	4.5	8.64	86.5					
12/30/2010	23:55:24	-81	4.5	8.58	87.3					
12/30/2010	23:55:54	-79	4.5	8.53	89.6					
12/30/2010	23:56:24	-78	4.5	8.52	91.8					
12/30/2010	23:56:54	-78	4.5	8.52	94.1					
12/30/2010	23:57:24	-76	4.6	8.52	96.4					
12/30/2010	23:57:45					20 bbls S001				
12/30/2010	23:57:45	1	0.0	8.52	96.7					
12/30/2010	23:57:54	1	0.0	8.52	96.7					
12/30/2010	23:58:24	4	2.7	8.73	97.2					
12/30/2010	23:58:54	7	4.5	9.05	99.3					
12/30/2010	23:59:24	8	4.5	9.04	101.6					
12/30/2010	23:59:54	10	4.5	9.01	103.8					
12/31/2010	00:00:24	10	4.5	9.00	106.1					
12/31/2010	00:00:54	13	6.3	8.86	108.4					
12/31/2010	00:01:24	14	6.3	9.06	111.6					
12/31/2010	00:01:54	16	6.4	9.06	114.8					
12/31/2010	00:02:24	15	6.4	8.52	118.0					
12/31/2010	00:02:47					10 bbl H2O				
12/31/2010	00:02:47	18	6.4	8.53	120.4					
12/31/2010	00:02:54	17	6.4	8.52	121.2					
12/31/2010	00:03:24	21	6.4	8.51	124.4					
12/31/2010	00:03:54	13	0.0	25.00	124.9					
12/31/2010	00:04:24	20	6.3	8.51	127.3					
12/31/2010	00:04:53					30 bbl ZoneLock				
12/31/2010	00:04:53	20	6.4	9.83	130.4					
12/31/2010	00:04:54	20	6.4	9.84	130.6					
12/31/2010	00:05:24	21	6.3	9.94	133.7					
12/31/2010	00:05:54	23	6.3	9.95	136.9					
12/31/2010	00:06:24	25	6.3	9.95	140.1					
12/31/2010	00:06:54	25	6.3	9.95	143.2					
12/31/2010	00:07:24	23	6.0	9.95	146.3					
12/31/2010	00:07:54	24	6.4	9.95	149.5					
12/31/2010	00:08:24	24	6.3	9.95	152.7					

Well SGU 8504D-25 F25 496 8504D-25			Field Story Gulch		Job Start Dec/30/2010		Customer Encana Oil & Gas		Job Number 465807	
Date	Time 24-hr clock	Treating Pressure PSI	Flow Rate B/M	Density LB/G	Volume BBL	Message				
12/31/2010	00:08:48	24	6.3	9.95	155.2					
12/31/2010	00:08:54	24	6.3	9.95	155.8					
12/31/2010	00:09:24	24	6.3	9.96	159.0					
12/31/2010	00:09:54	19	6.3	8.66	161.9					
12/31/2010	00:10:24	18	6.3	8.55	165.1					
12/31/2010	00:10:54	15	6.4	8.55	168.3					
12/31/2010	00:11:24	14	6.4	8.51	171.5					
12/31/2010	00:11:54	13	6.4	8.64	174.6					
12/31/2010	00:12:09					Pump 80bbl Mud w/ CemNET Plus				
12/31/2010	00:12:09	7	4.5	8.72	176.0					
12/31/2010	00:12:24	5	4.5	8.84	177.1					
12/31/2010	00:12:54	2	4.5	8.93	179.4					
12/31/2010	00:13:24	0	4.5	9.05	181.6					
12/31/2010	00:13:54	-3	4.5	9.09	183.8					
12/31/2010	00:14:24	-6	4.5	9.04	186.1					
12/31/2010	00:14:54	-14	4.4	9.04	188.3					
12/31/2010	00:15:24	-36	4.4	9.07	190.5					
12/31/2010	00:15:54	-40	4.4	9.07	192.7					
12/31/2010	00:16:24	-42	4.3	9.12	194.9					
12/31/2010	00:16:54	-43	4.3	9.08	197.0					
12/31/2010	00:17:24	-49	4.3	9.08	199.2					
12/31/2010	00:17:54	-55	4.4	9.04	201.4					
12/31/2010	00:18:24	-59	4.4	9.02	203.6					
12/31/2010	00:18:54	-65	4.4	8.97	205.8					
12/31/2010	00:19:24	-69	4.5	8.95	208.0					
12/31/2010	00:19:54	-71	4.4	8.95	210.2					
12/31/2010	00:20:24	-75	4.5	8.91	212.4					
12/31/2010	00:20:54	-83	4.5	8.88	214.7					
12/31/2010	00:21:24	-87	4.5	8.89	216.9					
12/31/2010	00:21:54	-89	4.5	8.88	219.2					
12/31/2010	00:22:24	-92	4.5	8.88	221.4					
12/31/2010	00:22:54	-93	4.5	8.88	223.7					
12/31/2010	00:23:24	-96	4.5	8.87	225.9					
12/31/2010	00:23:54	-97	4.5	8.86	228.2					
12/31/2010	00:24:24	-104	4.5	8.88	230.4					
12/31/2010	00:24:54	-108	4.5	8.90	232.7					
12/31/2010	00:25:24	-109	4.5	8.88	234.9					
12/31/2010	00:25:54	-114	4.5	8.90	237.2					
12/31/2010	00:26:24	-118	4.5	8.89	239.4					
12/31/2010	00:26:54	-124	4.5	8.90	241.7					
12/31/2010	00:27:24	-132	4.5	8.88	243.9					
12/31/2010	00:27:54	-131	4.5	8.88	246.2					
12/31/2010	00:28:24	-135	4.5	8.90	248.4					
12/31/2010	00:28:54	-145	4.5	8.95	250.7					
12/31/2010	00:29:24	-152	4.6	8.94	253.0					
12/31/2010	00:29:54	-155	4.6	8.92	255.2					
12/31/2010	00:30:24	-163	4.5	8.74	257.5					
12/31/2010	00:30:54	-169	4.5	8.55	259.8					
12/31/2010	00:31:24	-175	4.5	8.53	262.0					
12/31/2010	00:31:54	-182	4.5	8.53	264.3					
12/31/2010	00:32:24	-188	4.5	8.53	266.6					
12/31/2010	00:32:30					Begin ZoneLock #2				
12/31/2010	00:32:30	-189	4.5	8.53	267.0					
12/31/2010	00:32:31					Same Vols as 1st one				

Well SGU 8504D-25 F25 496 8504D-25			Field Story Gulch		Job Start Dec/30/2010		Customer Encana Oil & Gas		Job Number 465807	
Date	Time 24-hr clock	Treating Pressure PSI	Flow Rate B/M	Density LB/G	Volume BBL	Message				
12/31/2010	00:32:54	-192	4.5	8.53	268.8					
12/31/2010	00:33:24	-210	0.0	8.53	269.5					
12/31/2010	00:33:54	-220	0.1	8.53	269.9					
12/31/2010	00:34:24	-223	0.0	8.53	269.9					
12/31/2010	00:34:54	-233	0.0	8.53	269.9					
12/31/2010	00:35:24	-241	0.0	8.53	269.9					
12/31/2010	00:35:54	-247	0.0	8.53	269.9					
12/31/2010	00:36:24	-257	0.0	8.53	269.9					
12/31/2010	00:36:54	-266	0.0	8.53	269.9					
12/31/2010	00:37:24	-276	0.0	8.52	269.9					
12/31/2010	00:37:54	-288	0.0	8.52	270.0					
12/31/2010	00:38:24	-298	0.0	8.52	270.0					
12/31/2010	00:38:54	-307	0.0	8.53	270.0					
12/31/2010	00:39:24	-317	0.0	8.53	270.0					
12/31/2010	00:39:54	-324	0.0	8.53	270.0					
12/31/2010	00:40:24	-335	0.0	8.53	270.0					
12/31/2010	00:40:54	-343	0.0	8.53	270.0					
12/31/2010	00:41:24	-353	0.0	8.53	270.0					
12/31/2010	00:41:54	-368	0.0	8.53	270.0					
12/31/2010	00:42:24	-11	0.0	8.53	270.0					
12/31/2010	00:42:54	-30	0.0	8.53	270.0					
12/31/2010	00:43:24	-43	2.2	8.58	270.3					
12/31/2010	00:43:54	-56	3.5	9.06	271.6					
12/31/2010	00:44:24	-62	4.5	9.06	273.8					
12/31/2010	00:44:54	-73	4.5	9.06	276.1					
12/31/2010	00:45:24	-87	4.6	9.06	278.3					
12/31/2010	00:45:54	-94	4.5	8.55	280.6					
12/31/2010	00:46:24	-110	4.6	9.09	282.9					
12/31/2010	00:46:54	-134	4.5	9.09	285.2					
12/31/2010	00:47:24	-163	4.5	9.08	287.4					
12/31/2010	00:47:54	-189	4.6	9.08	289.7					
12/31/2010	00:48:24	-219	4.5	8.60	292.0					
12/31/2010	00:48:54	-248	4.6	8.53	294.2					
12/31/2010	00:49:24	-248	4.6	8.53	296.5					
12/31/2010	00:49:54	-306	4.5	8.52	298.8					
12/31/2010	00:50:24	-336	4.5	8.52	301.1					
12/31/2010	00:50:54	-329	4.5	9.89	303.3					
12/31/2010	00:51:24	-326	4.5	9.94	305.6					
12/31/2010	00:51:54	-308	4.5	9.95	307.9					
12/31/2010	00:52:24	-278	4.5	9.95	310.1					
12/31/2010	00:52:54	-250	4.5	9.95	312.4					
12/31/2010	00:53:24	-241	4.5	9.95	314.6					
12/31/2010	00:53:54	-268	4.5	9.95	316.9					
12/31/2010	00:54:24	-248	4.5	9.95	319.2					
12/31/2010	00:54:54	-277	4.5	9.95	321.4					
12/31/2010	00:55:24	139	4.5	9.95	323.7					
12/31/2010	00:55:54	1	0.0	25.00	324.8					
12/31/2010	00:56:24	94	2.5	14.57	324.9					
12/31/2010	00:56:54	94	4.5	8.54	327.1					
12/31/2010	00:57:24	96	4.5	8.53	329.3					
12/31/2010	00:57:54	94	4.5	8.53	331.6					
12/31/2010	00:58:24	95	4.5	8.60	333.9					
12/31/2010	00:58:54	-11	0.4	8.53	335.9					
12/31/2010	00:59:24	-8	0.0	8.54	335.9					

Well SGU 8504D-25 F25 496 8504D-25			Field Story Gulch		Job Start Dec/30/2010		Customer Encana Oil & Gas		Job Number 465807	
Date	Time 24-hr clock	Treating Pressure PSI	Flow Rate B/M	Density LB/G	Volume BBL	Message				
12/31/2010	01:00:24	-8	0.0	8.54	336.0					
12/31/2010	01:00:54	-8	0.0	8.54	336.0					
12/31/2010	01:01:24	-7	0.0	8.53	336.0					
12/31/2010	01:01:54	-9	0.0	8.53	336.0					
12/31/2010	01:02:24	-9	0.0	8.53	336.0					
12/31/2010	01:02:54	-8	0.0	8.53	336.0					
12/31/2010	01:03:24	-7	0.0	8.53	336.0					
12/31/2010	01:03:54	-5	0.0	8.53	336.1					
12/31/2010	01:04:24	-5	0.0	8.53	336.1					
12/31/2010	01:04:54	-4	0.0	8.53	336.1					
12/31/2010	01:05:24	-4	0.0	8.53	336.1					
12/31/2010	01:05:40					End Mudsweeps/Zonelock				
12/31/2010	01:05:40	-5	0.0	8.53	336.1					
12/31/2010	01:05:54	-5	0.0	8.53	336.1					
12/31/2010	01:06:02					Down due to Frozen Lines				
12/31/2010	01:06:02	-4	0.0	8.53	336.1					
12/31/2010	01:06:24	-5	0.0	8.53	336.1					
12/31/2010	01:06:54	-5	0.0	8.53	336.1					
12/31/2010	01:07:24	-5	0.0	8.53	336.1					
12/31/2010	01:07:54	-5	0.0	8.53	336.2					
12/31/2010	01:08:24	-3	0.0	8.54	336.5					
12/31/2010	01:08:54	9	1.0	8.54	336.7					
12/31/2010	01:09:24	4	1.1	8.54	337.2					
12/31/2010	01:09:54	4	1.1	8.54	337.8					
12/31/2010	01:10:24	-5	0.0	8.54	338.0					
12/31/2010	01:10:54	-4	0.1	8.54	338.1					
12/31/2010	01:11:24	-1	0.6	8.53	338.2					
12/31/2010	01:11:54	1	0.7	8.54	338.4					
12/31/2010	01:12:24	-3	0.4	8.55	338.6					
12/31/2010	01:12:54	-3	0.4	8.55	338.8					
12/31/2010	01:13:24	-3	0.3	8.54	338.9					
12/31/2010	01:13:54	-3	0.4	8.54	339.1					
12/31/2010	01:14:24	-3	0.3	8.54	339.3					
12/31/2010	01:14:54	-3	0.3	8.53	339.5					
12/31/2010	01:15:08					Flow H2O / Prevent Freezing				
12/31/2010	01:15:08	-2	0.4	8.53	339.6					
12/31/2010	01:15:24	-3	0.4	8.53	339.7					
12/31/2010	01:15:54	-3	0.3	8.53	339.8					
12/31/2010	01:16:24	-3	0.5	8.53	340.0					
12/31/2010	01:16:54	-2	0.3	8.53	340.2					
12/31/2010	01:17:24	-1	0.3	8.53	340.4					
12/31/2010	01:17:54	-4	0.4	8.53	340.6					
12/31/2010	01:18:24	-3	0.4	8.53	340.7					
12/31/2010	01:18:54	-3	0.4	8.53	340.9					
12/31/2010	01:19:24	-3	0.4	8.53	341.1					
12/31/2010	01:19:54	-3	0.4	8.52	341.3					
12/31/2010	01:20:24	-4	0.4	8.52	341.4					
12/31/2010	01:20:54	-3	0.3	8.52	341.6					
12/31/2010	01:21:24	-3	0.4	8.53	341.8					
12/31/2010	01:21:54	-4	0.3	8.53	342.0					
12/31/2010	01:22:24	-3	0.4	8.53	342.2					
12/31/2010	01:22:54	-4	0.4	8.53	342.3					
12/31/2010	01:23:24	-4	0.4	8.52	342.5					
12/31/2010	01:23:54	-3	0.4	8.53	342.7					

Well SGU 8504D-25 F25 496 8504D-25			Field Story Gulch		Job Start Dec/30/2010		Customer Encana Oil & Gas		Job Number 465807	
Date	Time 24-hr clock	Treating Pressure PSI	Flow Rate B/M	Density LB/G	Volume BBL	Message				
12/31/2010	01:24:54	-3	0.4	8.53	343.0					
12/31/2010	01:25:24	-4	0.4	8.53	343.2					
12/31/2010	01:25:54	-3	0.4	8.53	343.4					
12/31/2010	01:26:24	-4	0.4	8.53	343.6					
12/31/2010	01:26:54	-3	0.4	8.53	343.8					
12/31/2010	01:27:24	-4	0.4	8.53	343.9					
12/31/2010	01:27:54	-4	0.4	8.53	344.1					
12/31/2010	01:28:24	-5	0.4	8.53	344.3					
12/31/2010	01:28:54	-5	0.4	8.52	344.5					
12/31/2010	01:29:24	-4	0.3	8.53	344.6					
12/31/2010	01:29:54	-5	0.3	8.53	344.8					
12/31/2010	01:30:24	-5	0.4	8.53	345.0					
12/31/2010	01:30:54	-5	0.4	8.52	345.2					
12/31/2010	01:31:24	-4	0.4	8.52	345.4					
12/31/2010	01:31:54	-4	0.3	8.52	345.5					
12/31/2010	01:32:24	-2	0.3	8.52	345.7					
12/31/2010	01:32:54	-4	0.4	8.52	345.9					
12/31/2010	01:33:24	-3	0.4	8.52	346.1					
12/31/2010	01:33:54	-3	0.4	8.53	346.3					
12/31/2010	01:34:24	-3	0.3	8.53	346.4					
12/31/2010	01:34:54	-3	0.4	8.57	346.6					
12/31/2010	01:35:24	-3	0.3	8.62	346.8					
12/31/2010	01:35:54	-4	0.2	8.65	346.9					
12/31/2010	01:36:24	-3	0.2	8.67	347.0					
12/31/2010	01:36:54	-4	0.2	8.68	347.1					
12/31/2010	01:37:24	-3	0.2	8.68	347.2					
12/31/2010	01:37:54	-3	0.2	8.69	347.3					
12/31/2010	01:38:24	-4	0.2	8.70	347.4					
12/31/2010	01:38:54	-3	0.2	8.70	347.5					
12/31/2010	01:39:24	-3	0.1	8.70	347.5					
12/31/2010	01:39:54	-3	0.1	8.71	347.6					
12/31/2010	01:40:24	-2	0.3	8.71	347.8					
12/31/2010	01:40:54	-1	0.2	8.71	347.9					
12/31/2010	01:41:24	-1	0.3	8.71	348.0					
12/31/2010	01:41:54	-2	0.2	8.71	348.1					
12/31/2010	01:42:24	-1	0.2	8.71	348.2					
12/31/2010	01:42:47					Pump 50 bbl Mudpush @ 8.9				
12/31/2010	01:42:47	-0	0.2	8.71	348.3					
12/31/2010	01:42:54	52	2.7	8.70	348.4					
12/31/2010	01:43:24	58	3.4	8.78	350.2					
12/31/2010	01:43:54	133	6.0	8.77	352.4					
12/31/2010	01:44:24	489	5.9	8.80	355.4					
12/31/2010	01:44:54	141	5.9	8.80	358.4					
12/31/2010	01:45:24	139	5.9	8.78	361.3					
12/31/2010	01:45:54	124	5.9	8.78	364.3					
12/31/2010	01:46:24	148	5.8	8.78	367.2					
12/31/2010	01:46:54	147	5.8	8.78	370.1					
12/31/2010	01:47:24	137	5.8	8.77	373.0					
12/31/2010	01:47:54	157	5.8	8.80	375.9					
12/31/2010	01:48:24	155	5.9	8.83	378.9					
12/31/2010	01:48:54	186	5.9	8.90	381.8					
12/31/2010	01:49:24	203	5.9	8.98	384.7					
12/31/2010	01:49:54	220	5.9	9.00	387.7					
12/31/2010	01:50:24	237	5.9	9.03	390.7					

Well SGU 8504D-25 F25 496 8504D-25			Field Story Gulch		Job Start Dec/30/2010	Customer Encana Oil & Gas	Job Number 465807
Date	Time 24-hr clock	Treating Pressure PSI	Flow Rate B/M	Density LB/G	Volume BBL	Message	
12/31/2010	01:51:24	101	1.8	9.11	394.7		
12/31/2010	01:51:54	69	0.8	9.64	395.5		
12/31/2010	01:52:24	27	0.0	9.37	395.6		
12/31/2010	01:52:54	24	0.0	9.43	395.6		
12/31/2010	01:53:24	23	0.0	9.43	395.6		
12/31/2010	01:53:54	24	0.0	9.43	395.6		
12/31/2010	01:54:24	82	0.2	9.46	395.6		
12/31/2010	01:54:54	41	0.0	9.60	395.8		
12/31/2010	01:55:24	35	0.0	9.57	395.8		
12/31/2010	01:55:54	34	0.0	9.55	395.8		
12/31/2010	01:56:24	33	0.0	9.54	395.8		
12/31/2010	01:56:54	25	0.0	9.54	395.8		
12/31/2010	01:57:24	22	0.0	9.53	395.8		
12/31/2010	01:57:54	20	0.0	9.53	395.8		
12/31/2010	01:58:24	19	0.0	9.53	395.8		
12/31/2010	01:58:54	17	0.0	9.52	395.8		
12/31/2010	01:59:24	17	0.0	9.52	395.8		
12/31/2010	01:59:54	23	0.5	9.58	395.8		
12/31/2010	02:00:24	67	0.8	9.37	396.1		
12/31/2010	02:00:54	53	0.7	9.10	396.5		
12/31/2010	02:01:24	47	0.7	9.09	396.8		
12/31/2010	02:01:54	39	0.7	9.10	397.2		
12/31/2010	02:02:24	26	0.7	9.16	397.5		
12/31/2010	02:02:54	18	0.0	9.27	397.8		
12/31/2010	02:03:24	11	0.0	9.24	397.8		
12/31/2010	02:03:54	9	0.0	9.22	397.8		
12/31/2010	02:04:24	7	0.0	9.20	397.8		
12/31/2010	02:04:54	6	0.0	9.19	397.8		
12/31/2010	02:05:24	4	0.0	9.18	397.8		
12/31/2010	02:05:54	4	0.0	9.17	397.8		
12/31/2010	02:06:24	3	0.0	9.16	397.8		
12/31/2010	02:06:54	8	0.3	9.19	397.8		
12/31/2010	02:07:24	17	0.7	9.27	398.1		
12/31/2010	02:07:54	24	0.7	9.19	398.5		
12/31/2010	02:08:24	23	0.7	9.32	398.8		
12/31/2010	02:08:54	22	0.7	9.42	399.1		
12/31/2010	02:09:24	52	1.2	10.64	399.7		
12/31/2010	02:09:54	56	1.4	8.84	400.5		
12/31/2010	02:10:24	31	1.5	8.80	401.2		
12/31/2010	02:10:54	44	1.8	8.78	402.0		
12/31/2010	02:11:24	58	2.8	8.70	403.4		
12/31/2010	02:11:54	59	3.2	8.72	405.0		
12/31/2010	02:12:24	45	3.3	7.81	406.4		
12/31/2010	02:12:54	20	12.1	3.18	412.2		
12/31/2010	02:13:24	14	10.1	1.00	412.8		
12/31/2010	02:13:54	58	3.0	8.10	416.1		
12/31/2010	02:14:24	62	3.1	8.46	417.6		
12/31/2010	02:14:54	34	6.2	6.64	420.1		
12/31/2010	02:15:24	39	5.8	8.16	422.0		
12/31/2010	02:15:54	9	0.2	8.51	423.4		
12/31/2010	02:16:24	22	1.5	8.47	423.6		
12/31/2010	02:16:54	6	1.3	8.53	424.5		
12/31/2010	02:17:24	3	0.0	8.53	424.6		
12/31/2010	02:17:54	-4	0.0	8.53	424.6		

Well SGU 8504D-25 F25 496 8504D-25			Field Story Gulch		Job Start Dec/30/2010	Customer Encana Oil & Gas	Job Number 465807
Date	Time 24-hr clock	Treating Pressure PSI	Flow Rate B/M	Density LB/G	Volume BBL	Message	
12/31/2010	02:18:54	-4	0.0	8.53	424.6		
12/31/2010	02:19:24	-4	0.0	8.53	424.6		
12/31/2010	02:19:54	-4	0.0	8.53	424.6		
12/31/2010	02:20:24	-3	0.0	8.53	424.6		
12/31/2010	02:20:54	-2	0.0	8.53	424.6		
12/31/2010	02:21:24	-4	0.0	8.53	424.6		
12/31/2010	02:21:54	-3	0.0	8.53	424.7		
12/31/2010	02:22:24	-2	0.0	8.53	424.7		
12/31/2010	02:22:53					Stop Job Due to weather	
12/31/2010	02:22:53	-3	0.0	8.35	424.7		
12/31/2010	02:22:54					Will Resume During Daylight	
12/31/2010	02:22:54					Rig to Circulate until Resume	
12/31/2010	02:22:54	-3	0.0	8.45	424.7		
12/31/2010	11:36:54	-3	0.0	8.53	0.0		
12/31/2010	11:37:24	-3	0.0	8.53	0.0		
12/31/2010	11:37:54	-3	0.0	8.53	0.0		
12/31/2010	11:38:24	-3	0.0	8.53	0.0		
12/31/2010	11:38:32					Held Safety Mtg.	
12/31/2010	11:38:32	-3	0.0	8.53	0.0		
12/31/2010	11:38:54	-4	0.0	8.53	0.0		
12/31/2010	11:39:24	-4	0.0	8.53	0.1		
12/31/2010	11:39:54	-4	0.0	8.53	0.1		
12/31/2010	11:40:24	-5	0.0	8.53	0.1		
12/31/2010	11:40:54	-4	0.0	8.53	0.1		
12/31/2010	11:41:24	-4	0.0	8.53	0.1		
12/31/2010	11:41:54	-5	0.0	8.53	0.1		
12/31/2010	11:42:24	-5	0.0	8.53	0.1		
12/31/2010	11:42:54	-5	0.0	8.53	0.1		
12/31/2010	11:43:24	-4	0.0	8.53	0.1		
12/31/2010	11:43:54	-5	0.0	8.53	0.1		
12/31/2010	11:44:00					Fill Lines w/ H2O	
12/31/2010	11:44:00	-5	0.0	8.53	0.1		
12/31/2010	11:44:24	-4	0.0	8.53	0.1		
12/31/2010	11:44:54	-4	0.0	8.53	0.2		
12/31/2010	11:45:24	-4	0.0	8.53	0.2		
12/31/2010	11:45:54	-4	0.0	8.53	0.2		
12/31/2010	11:46:24	-4	0.0	8.53	0.2		
12/31/2010	11:46:54	-4	0.0	8.53	0.2		
12/31/2010	11:47:24	-5	0.0	8.53	0.2		
12/31/2010	11:47:54	-5	0.0	8.53	0.2		
12/31/2010	11:48:24	-5	0.0	8.53	0.2		
12/31/2010	11:48:54	-5	0.0	8.53	0.2		
12/31/2010	11:49:24	-5	0.0	8.53	0.2		
12/31/2010	11:49:54	-5	0.0	8.53	0.3		
12/31/2010	11:50:24	-5	0.0	8.53	0.3		
12/31/2010	11:50:54	-5	0.0	8.53	0.3		
12/31/2010	11:51:24	-5	0.0	8.53	0.3		
12/31/2010	11:51:54	-5	0.0	8.53	0.3		
12/31/2010	11:52:24	-5	0.0	8.53	0.3		
12/31/2010	11:52:54	-5	0.0	8.53	0.3		
12/31/2010	11:53:24	-5	0.0	8.53	0.3		
12/31/2010	11:53:54	-5	0.0	8.53	0.3		
12/31/2010	11:54:24	-5	0.0	8.53	0.3		
12/31/2010	11:54:54	-5	0.0	8.53	0.3		

Well SGU 8504D-25 F25 496 8504D-25			Field Story Gulch		Job Start Dec/30/2010		Customer Encana Oil & Gas		Job Number 465807	
Date	Time 24-hr clock	Treating Pressure PSI	Flow Rate B/M	Density LB/G	Volume BBL	Message				
12/31/2010	11:55:54	-5	0.0	8.53	0.4					
12/31/2010	11:56:24	-5	0.0	8.53	0.4					
12/31/2010	11:56:54	-5	0.0	8.53	0.4					
12/31/2010	11:57:24	-5	0.0	8.53	0.4					
12/31/2010	11:57:54	-5	0.0	8.53	0.4					
12/31/2010	11:58:24	-5	0.0	8.53	0.4					
12/31/2010	11:58:54	-5	0.0	8.53	0.4					
12/31/2010	11:59:24	-5	0.0	8.53	0.4					
12/31/2010	11:59:54	-7	0.0	8.53	0.4					
12/31/2010	12:00:24	-7	0.0	8.53	0.4					
12/31/2010	12:00:54	-7	0.0	8.53	0.5					
12/31/2010	12:01:24	-7	0.0	8.53	0.5					
12/31/2010	12:01:36					Pressure Test Lines				
12/31/2010	12:01:36	-6	0.0	8.53	0.5					
12/31/2010	12:01:40					3000psi Test = Success				
12/31/2010	12:01:40	-6	0.0	8.53	0.5					
12/31/2010	12:01:54	-6	0.0	8.53	0.5					
12/31/2010	12:02:24	-7	0.0	8.53	0.5					
12/31/2010	12:02:54	-7	0.0	8.53	0.5					
12/31/2010	12:03:24	-6	0.0	8.53	0.5					
12/31/2010	12:03:54	-7	0.0	8.53	0.5					
12/31/2010	12:04:24	55	2.5	8.53	1.0					
12/31/2010	12:04:54	54	1.8	8.53	1.9					
12/31/2010	12:05:24	54	1.8	8.52	2.8					
12/31/2010	12:05:54	55	1.8	8.52	3.7					
12/31/2010	12:06:24	5	0.0	8.52	3.8					
12/31/2010	12:06:54	4	0.0	8.53	3.8					
12/31/2010	12:07:24	4	0.0	8.53	3.9					
12/31/2010	12:07:54	4	0.0	8.53	3.9					
12/31/2010	12:08:24	4	0.0	8.52	3.9					
12/31/2010	12:08:54	4	0.0	8.52	3.9					
12/31/2010	12:09:24	4	0.0	8.52	3.9					
12/31/2010	12:09:54	31	0.5	8.53	3.9					
12/31/2010	12:10:24	1784	0.0	8.53	4.0					
12/31/2010	12:10:54	1744	0.0	8.53	4.0					
12/31/2010	12:11:24	2419	0.0	8.53	4.0					
12/31/2010	12:11:54	2984	0.0	8.53	4.0					
12/31/2010	12:12:24	2964	0.0	8.53	4.1					
12/31/2010	12:12:54	2564	0.0	8.53	4.1					
12/31/2010	12:13:24	5	0.1	8.53	4.1					
12/31/2010	12:13:54	5	0.0	8.53	4.1					
12/31/2010	12:14:24	4	0.0	8.53	4.1					
12/31/2010	12:14:54	3	0.0	8.53	4.1					
12/31/2010	12:14:58					Batch up Mudpush				
12/31/2010	12:14:58	4	0.0	8.53	4.1					
12/31/2010	12:15:24	3	0.0	8.53	4.1					
12/31/2010	12:15:54	3	0.0	8.53	4.2					
12/31/2010	12:16:24	3	0.0	8.53	4.2					
12/31/2010	12:16:54	2	0.0	8.53	4.2					
12/31/2010	12:17:24	2	0.0	8.53	4.2					
12/31/2010	12:17:54	2	0.1	8.53	4.2					
12/31/2010	12:18:24	3	0.2	8.53	4.4					
12/31/2010	12:18:54	2	0.1	8.53	4.4					
12/31/2010	12:19:24	1	0.1	8.53	4.5					

Well SGU 8504D-25 F25 496 8504D-25			Field Story Gulch		Job Start Dec/30/2010		Customer Encana Oil & Gas		Job Number 465807	
Date	Time 24-hr clock	Treating Pressure PSI	Flow Rate B/M	Density LB/G	Volume BBL	Message				
12/31/2010	12:20:24	1	0.1	8.53	4.6					
12/31/2010	12:20:54	0	0.2	8.53	4.7					
12/31/2010	12:21:24	-0	0.2	8.53	4.8					
12/31/2010	12:21:54	0	0.2	8.53	4.9					
12/31/2010	12:22:24	-0	0.2	8.53	5.0					
12/31/2010	12:22:54	-1	0.2	8.53	5.1					
12/31/2010	12:23:24	-0	0.2	8.53	5.2					
12/31/2010	12:23:54	-1	0.2	8.53	5.3					
12/31/2010	12:24:24	-1	0.2	8.53	5.4					
12/31/2010	12:24:54	-1	0.3	8.53	5.5					
12/31/2010	12:25:24	-0	0.3	8.53	5.7					
12/31/2010	12:25:54	-1	0.3	8.53	5.8					
12/31/2010	12:26:24	-1	0.3	8.53	5.9					
12/31/2010	12:26:54	-1	0.3	8.53	6.1					
12/31/2010	12:27:24	-1	0.3	8.53	6.2					
12/31/2010	12:27:54	-1	0.3	8.53	6.4					
12/31/2010	12:28:24	-1	0.3	8.53	6.6					
12/31/2010	12:28:54	-1	0.3	8.53	6.7					
12/31/2010	12:29:24	-1	0.3	8.53	6.9					
12/31/2010	12:29:54	-1	0.4	8.53	7.1					
12/31/2010	12:30:24	-1	0.4	8.53	7.2					
12/31/2010	12:30:54	-1	0.4	8.53	7.4					
12/31/2010	12:31:24	-1	0.4	8.53	7.6					
12/31/2010	12:31:54	-1	0.4	8.53	7.8					
12/31/2010	12:32:24	-1	0.4	8.53	8.1					
12/31/2010	12:32:54	-1	0.4	8.53	8.3					
12/31/2010	12:33:24	-1	0.4	8.53	8.5					
12/31/2010	12:33:54	-2	0.3	8.53	8.7					
12/31/2010	12:34:24	-2	0.3	8.53	8.8					
12/31/2010	12:34:54	-3	0.3	8.53	9.0					
12/31/2010	12:35:24	1	0.3	8.53	9.2					
12/31/2010	12:35:54	1	0.3	8.53	9.3					
12/31/2010	12:36:24	2	0.3	8.53	9.5					
12/31/2010	12:36:54	3	0.2	8.53	9.6					
12/31/2010	12:37:24	4	0.2	8.53	9.7					
12/31/2010	12:37:54	62	3.2	8.52	10.6					
12/31/2010	12:37:55					Start Pumping Spacer				
12/31/2010	12:37:55	62	3.2	8.52	10.6					
12/31/2010	12:37:57					Pump 50 bbl Mudpush @ 8.8ppg				
12/31/2010	12:37:57					Good Returns				
12/31/2010	12:37:57	64	3.7	8.52	10.7					
12/31/2010	12:38:24	79	1.4	8.53	11.8					
12/31/2010	12:38:54	94	3.3	8.52	13.4					
12/31/2010	12:39:24	113	4.2	8.76	15.3					
12/31/2010	12:39:54	240	6.2	8.85	17.6					
12/31/2010	12:40:24	230	6.1	8.88	20.7					
12/31/2010	12:40:54	224	6.2	8.91	23.7					
12/31/2010	12:41:24	239	6.1	8.94	26.8					
12/31/2010	12:41:54	234	6.1	8.93	29.9					
12/31/2010	12:42:24	253	6.2	8.89	33.0					
12/31/2010	12:42:54	245	6.2	8.90	36.1					
12/31/2010	12:43:24	258	6.1	8.90	39.1					
12/31/2010	12:43:54	255	6.2	8.87	42.2					
12/31/2010	12:44:24	248	6.2	8.85	45.3					

Well			Field		Job Start		Customer		Job Number	
SGU 8504D-25 F25 496 8504D-25			Story Gulch		Dec/30/2010		Encana Oil & Gas		465807	
Date	Time 24-hr clock	Treating Pressure PSI	Flow Rate B/M	Density LB/G	Volume BBL	Message				
12/31/2010	12:45:24	235	6.1	8.85	51.5					
12/31/2010	12:45:54	236	6.1	8.84	54.5					
12/31/2010	12:46:24	233	6.1	8.82	57.6					
12/31/2010	12:46:54	235	6.2	8.75	60.7					
12/31/2010	12:47:24	262	6.2	8.88	63.7					
12/31/2010	12:47:47					End Spacer				
12/31/2010	12:47:47	273	6.2	9.04	66.1					
12/31/2010	12:47:50					Start Cement Slurry				
12/31/2010	12:47:50	290	6.2	9.06	66.4					
12/31/2010	12:47:54	291	6.2	9.08	66.8					
12/31/2010	12:48:24	277	6.2	9.15	69.9					
12/31/2010	12:48:48					Start Mixing Tail Slurry				
12/31/2010	12:48:48	280	6.2	9.21	72.4					
12/31/2010	12:48:51					Pump 1127 sks (562bbl) 9.0 LiteCRETE				
12/31/2010	12:48:51					Wet Dry Samples Taken				
12/31/2010	12:48:51	279	6.2	9.22	72.7					
12/31/2010	12:48:52					Measured H2O tanks				
12/31/2010	12:48:52	279	6.2	9.22	72.8					
12/31/2010	12:48:53					Good Returns				
12/31/2010	12:48:53	283	6.2	9.23	72.9					
12/31/2010	12:48:54	282	6.2	9.23	73.0					
12/31/2010	12:49:24	260	6.3	9.29	76.1					
12/31/2010	12:49:54	286	6.2	9.42	79.3					
12/31/2010	12:50:24	310	6.3	9.48	82.4					
12/31/2010	12:50:54	312	6.3	9.52	85.5					
12/31/2010	12:51:24	310	6.3	9.55	88.7					
12/31/2010	12:51:54	199	4.4	9.58	91.1					
12/31/2010	12:52:24	189	4.4	9.60	93.3					
12/31/2010	12:52:54	186	4.4	9.63	95.5					
12/31/2010	12:53:24	183	4.4	9.66	97.7					
12/31/2010	12:53:54	128	3.2	9.69	99.7					
12/31/2010	12:54:24	123	3.2	9.71	101.3					
12/31/2010	12:54:54	125	3.2	9.73	102.9					
12/31/2010	12:55:24	125	3.2	9.75	104.5					
12/31/2010	12:55:54	193	4.4	9.77	106.2					
12/31/2010	12:56:24	190	4.4	9.80	108.4					
12/31/2010	12:56:54	336	5.3	9.81	110.7					
12/31/2010	12:57:24	312	6.3	9.82	113.8					
12/31/2010	12:57:54	315	6.3	9.83	116.9					
12/31/2010	12:58:24	330	6.3	9.84	120.1					
12/31/2010	12:58:54	322	6.3	9.86	123.2					
12/31/2010	12:59:24	318	6.3	9.87	126.4					
12/31/2010	12:59:54	325	6.3	9.89	129.5					
12/31/2010	13:00:24	330	6.3	9.90	132.7					
12/31/2010	13:00:54	323	6.3	9.91	135.8					
12/31/2010	13:01:24	320	6.3	9.92	139.0					
12/31/2010	13:01:54	318	6.3	9.92	142.1					
12/31/2010	13:02:24	322	6.3	9.93	145.3					
12/31/2010	13:02:54	312	6.3	9.93	148.4					
12/31/2010	13:03:24	302	6.3	9.93	151.6					
12/31/2010	13:03:54	289	6.3	9.91	154.7					
12/31/2010	13:04:24	278	6.3	9.88	157.9					
12/31/2010	13:04:54	145	4.4	9.88	160.9					
12/31/2010	13:05:24	148	4.4	9.89	163.1					

Well SGU 8504D-25 F25 496 8504D-25			Field Story Gulch		Job Start Dec/30/2010		Customer Encana Oil & Gas		Job Number 465807	
Date	Time 24-hr clock	Treating Pressure PSI	Flow Rate B/M	Density LB/G	Volume BBL	Message				
12/31/2010	13:06:24	153	4.4	9.91	167.5					
12/31/2010	13:06:54	160	4.4	9.92	169.7					
12/31/2010	13:07:24	160	4.4	9.94	172.0					
12/31/2010	13:07:54	165	4.4	9.95	174.2					
12/31/2010	13:08:24	157	4.4	9.96	176.4					
12/31/2010	13:08:54	157	4.4	9.96	178.6					
12/31/2010	13:09:24	150	4.4	9.97	180.8					
12/31/2010	13:09:54	150	4.4	9.98	183.0					
12/31/2010	13:10:24	142	4.4	9.98	185.2					
12/31/2010	13:10:54	138	4.4	9.97	187.4					
12/31/2010	13:11:24	156	4.4	9.97	189.6					
12/31/2010	13:11:54	286	6.3	9.96	192.4					
12/31/2010	13:12:24	281	6.3	9.89	195.6					
12/31/2010	13:12:54	276	6.3	9.84	198.7					
12/31/2010	13:13:24	273	6.3	9.81	201.9					
12/31/2010	13:13:54	285	6.3	9.79	205.0					
12/31/2010	13:14:24	286	6.3	9.78	208.2					
12/31/2010	13:14:54	290	6.3	9.76	211.3					
12/31/2010	13:15:24	294	6.3	9.75	214.5					
12/31/2010	13:15:54	304	6.3	9.74	217.7					
12/31/2010	13:16:24	305	6.3	9.73	220.8					
12/31/2010	13:16:54	299	6.3	9.73	224.0					
12/31/2010	13:17:24	302	6.3	9.73	227.1					
12/31/2010	13:17:54	302	6.3	9.72	230.3					
12/31/2010	13:18:24	300	6.3	9.72	233.4					
12/31/2010	13:18:54	286	6.3	9.71	236.6					
12/31/2010	13:19:24	286	6.3	9.71	239.7					
12/31/2010	13:19:54	294	6.3	9.71	242.9					
12/31/2010	13:20:24	289	6.3	9.71	246.0					
12/31/2010	13:20:54	286	6.3	9.71	249.2					
12/31/2010	13:21:24	300	6.3	9.71	252.3					
12/31/2010	13:21:54	293	6.3	9.71	255.5					
12/31/2010	13:22:24	290	6.3	9.72	258.6					
12/31/2010	13:22:54	305	6.3	9.72	261.8					
12/31/2010	13:23:24	301	6.3	9.74	264.9					
12/31/2010	13:23:54	289	6.3	9.75	268.1					
12/31/2010	13:24:24	305	6.3	9.76	271.2					
12/31/2010	13:24:54	296	6.3	9.77	274.4					
12/31/2010	13:25:24	287	6.3	9.77	277.5					
12/31/2010	13:25:54	296	6.3	9.78	280.7					
12/31/2010	13:26:24	307	6.3	9.78	283.8					
12/31/2010	13:26:54	309	6.3	9.78	287.0					
12/31/2010	13:27:24	309	6.3	9.78	290.1					
12/31/2010	13:27:54	295	6.3	9.78	293.3					
12/31/2010	13:28:24	298	6.3	9.79	296.4					
12/31/2010	13:28:54	306	6.3	9.80	299.6					
12/31/2010	13:29:24	304	6.3	9.82	302.7					
12/31/2010	13:29:54	310	6.3	9.82	305.9					
12/31/2010	13:30:24	298	6.3	9.83	309.0					
12/31/2010	13:30:54	166	4.4	9.87	311.4					
12/31/2010	13:31:24	169	4.4	9.90	313.6					
12/31/2010	13:31:54	161	4.4	9.94	315.8					
12/31/2010	13:32:24	174	4.4	9.96	318.0					
12/31/2010	13:32:54	173	4.4	9.95	320.2					

Well SGU 8504D-25 F25 496 8504D-25			Field Story Gulch	Job Start Dec/30/2010	Customer Encana Oil & Gas	Job Number 465807
Date	Time 24-hr clock	Treating Pressure PSI	Flow Rate B/M	Density LB/G	Volume BBL	Message
12/31/2010	13:33:54	191	4.4	9.95	324.7	
12/31/2010	13:34:24	166	4.4	9.82	326.9	
12/31/2010	13:34:54	171	4.4	9.81	329.1	
12/31/2010	13:35:24	298	6.3	9.82	331.8	
12/31/2010	13:35:54	312	6.3	9.83	335.0	
12/31/2010	13:36:24	314	6.3	9.83	338.1	
12/31/2010	13:36:54	325	6.3	9.85	341.3	
12/31/2010	13:37:24	320	6.3	9.86	344.4	
12/31/2010	13:37:54	341	6.3	9.87	347.5	
12/31/2010	13:38:24	350	6.3	9.87	350.7	
12/31/2010	13:38:54	342	6.3	9.88	353.8	
12/31/2010	13:39:24	355	6.3	9.89	357.0	
12/31/2010	13:39:54	357	6.3	9.88	360.1	
12/31/2010	13:40:24	362	6.3	9.86	363.3	
12/31/2010	13:40:54	390	6.3	9.85	366.4	
12/31/2010	13:41:24	375	6.3	9.81	369.5	
12/31/2010	13:41:54	368	6.3	9.77	372.7	
12/31/2010	13:42:24	364	6.3	9.74	375.8	
12/31/2010	13:42:54	367	6.3	9.74	379.0	
12/31/2010	13:43:24	370	6.3	9.74	382.1	
12/31/2010	13:43:54	362	6.3	9.73	385.2	
12/31/2010	13:44:24	376	6.3	9.74	388.4	
12/31/2010	13:44:54	365	6.3	9.73	391.5	
12/31/2010	13:45:24	356	6.3	9.73	394.7	
12/31/2010	13:45:54	369	6.3	9.74	397.8	
12/31/2010	13:45:56					Mudpush to Surface @ 300bbl away
12/31/2010	13:45:56	374	6.3	9.74	398.0	
12/31/2010	13:46:16					Diverted to pit
12/31/2010	13:46:16	368	6.3	9.74	400.1	
12/31/2010	13:46:24	366	6.3	9.74	400.9	
12/31/2010	13:46:54	355	6.3	9.75	404.1	
12/31/2010	13:47:24	375	6.3	9.75	407.2	
12/31/2010	13:47:54	375	6.3	9.75	410.4	
12/31/2010	13:48:24	371	6.3	9.75	413.5	
12/31/2010	13:48:54	374	6.3	9.75	416.6	
12/31/2010	13:49:24	228	4.4	9.76	419.6	
12/31/2010	13:49:54	233	4.4	9.79	421.8	
12/31/2010	13:50:24	243	4.4	9.81	424.0	
12/31/2010	13:51:24	240	4.4	9.84	428.5	
12/31/2010	13:51:54	236	4.4	9.85	430.7	
12/31/2010	13:52:24	228	4.4	9.87	432.9	
12/31/2010	13:52:54	237	4.4	9.89	435.1	
12/31/2010	13:53:24	229	4.4	9.91	437.3	
12/31/2010	13:53:54	225	4.4	9.93	439.5	
12/31/2010	13:54:24	219	4.4	9.95	441.7	
12/31/2010	13:54:54	217	4.4	9.96	443.9	
12/31/2010	13:55:24	211	4.4	9.97	446.1	
12/31/2010	13:55:54	203	4.4	9.95	448.3	
12/31/2010	13:56:24	205	4.4	9.93	450.5	
12/31/2010	13:56:54	211	4.4	9.93	452.7	
12/31/2010	13:57:24	203	4.4	9.94	454.9	
12/31/2010	13:57:54	122	3.9	9.93	457.1	
12/31/2010	13:58:24	243	3.7	9.93	459.0	
12/31/2010	13:58:54	150	3.7	9.93	460.8	

Well SGU 8504D-25 F25 496 8504D-25			Field Story Gulch		Job Start Dec/30/2010		Customer Encana Oil & Gas		Job Number 465807	
Date	Time 24-hr clock	Treating Pressure PSI	Flow Rate B/M	Density LB/G	Volume BBL	Message				
12/31/2010	13:59:54	267	4.8	9.92	464.8					
12/31/2010	14:00:08					Contaminated Slurry @ 500bbls away				
12/31/2010	14:00:08	296	4.8	9.91	465.9					
12/31/2010	14:00:24	278	4.7	9.91	467.2					
12/31/2010	14:00:54	321	4.8	9.90	469.5					
12/31/2010	14:01:24	296	4.8	9.89	471.9					
12/31/2010	14:01:54	193	4.8	9.88	474.3					
12/31/2010	14:02:24	282	4.7	9.87	476.7					
12/31/2010	14:02:54	253	4.8	9.87	479.1					
12/31/2010	14:03:24	281	4.8	9.86	481.4					
12/31/2010	14:03:54	288	4.8	9.86	483.8					
12/31/2010	14:04:24	315	4.8	9.86	486.2					
12/31/2010	14:04:54	309	4.8	9.86	488.6					
12/31/2010	14:05:24	346	4.8	9.85	491.0					
12/31/2010	14:05:54	256	4.8	9.86	493.3					
12/31/2010	14:06:24	233	4.8	9.86	495.7					
12/31/2010	14:06:54	276	4.8	9.87	498.1					
12/31/2010	14:07:24	276	4.7	9.87	500.5					
12/31/2010	14:07:54	269	4.8	9.88	502.9					
12/31/2010	14:08:24	212	4.7	9.89	505.2					
12/31/2010	14:08:54	263	4.8	9.90	507.6					
12/31/2010	14:09:24	261	4.8	9.91	510.0					
12/31/2010	14:09:54	296	4.8	9.92	512.4					
12/31/2010	14:10:24	177	4.7	9.93	514.8					
12/31/2010	14:10:54	260	4.8	9.95	517.1					
12/31/2010	14:11:24	221	4.8	9.96	519.5					
12/31/2010	14:11:54	311	4.8	9.98	521.9					
12/31/2010	14:12:24	177	4.8	9.99	524.3					
12/31/2010	14:12:54	273	4.8	10.00	526.7					
12/31/2010	14:13:24	223	4.8	10.00	529.0					
12/31/2010	14:13:54	371	4.8	10.01	531.4					
12/31/2010	14:14:24	288	4.8	10.03	533.8					
12/31/2010	14:14:54	302	4.8	10.04	536.2					
12/31/2010	14:15:24	324	4.8	10.04	538.6					
12/31/2010	14:15:54	197	4.7	10.04	540.9					
12/31/2010	14:16:24	290	4.8	10.04	543.3					
12/31/2010	14:16:54	209	4.7	10.04	545.7					
12/31/2010	14:17:24	293	4.8	10.03	548.1					
12/31/2010	14:17:54	279	4.8	10.03	550.5					
12/31/2010	14:18:24	302	4.8	10.02	552.8					
12/31/2010	14:18:54	197	4.8	10.02	555.2					
12/31/2010	14:19:24	266	4.8	10.00	557.6					
12/31/2010	14:19:54	237	4.7	10.00	559.9					
12/31/2010	14:20:24	309	4.7	9.99	562.3					
12/31/2010	14:20:54	175	4.7	9.98	564.7					
12/31/2010	14:21:24	266	4.8	9.97	567.0					
12/31/2010	14:21:54	149	4.0	10.00	569.4					
12/31/2010	14:22:24	115	2.9	10.02	570.9					
12/31/2010	14:22:54	128	2.8	10.16	572.3					
12/31/2010	14:23:24	30	1.3	10.14	573.6					
12/31/2010	14:23:54	41	0.5	10.46	573.9					
12/31/2010	14:24:24	50	0.5	10.70	574.1					
12/31/2010	14:24:54	38	0.6	11.00	574.4					
12/31/2010	14:25:24	101	1.8	10.92	574.8					

Well			Field		Job Start		Customer		Job Number		
SGU 8504D-25 F25 496 8504D-25			Story Gulch		Dec/30/2010		Encana Oil & Gas		465807		
Date	Time 24-hr clock	Treating Pressure PSI	Flow Rate B/M	Density LB/G	Volume BBL	Message					
12/31/2010	14:25:53	211	2.6	10.76	575.7						
12/31/2010	14:25:54	148	2.6	10.76	575.8						
12/31/2010	14:25:56					End Cement Slurry					
12/31/2010	14:25:56	107	2.8	10.75	575.8						
12/31/2010	14:25:58					Drop Top Plug					
12/31/2010	14:25:58	187	2.9	10.74	575.9						
12/31/2010	14:25:59					Start Displacement					
12/31/2010	14:25:59	116	2.9	10.74	576.0						
12/31/2010	14:26:08					Pump 10 bbls D182 water					
12/31/2010	14:26:08	294	2.9	10.57	576.4						
12/31/2010	14:26:24	133	4.0	10.44	577.5						
12/31/2010	14:26:54	209	3.9	9.48	579.4						
12/31/2010	14:27:24	213	3.9	8.58	581.4						
12/31/2010	14:27:54	134	4.0	8.58	583.4						
12/31/2010	14:28:24	94	4.0	8.58	585.4						
12/31/2010	14:28:54	103	4.0	8.58	587.4						
12/31/2010	14:29:24	137	4.0	8.57	589.4						
12/31/2010	14:29:54	204	4.0	8.55	591.4						
12/31/2010	14:30:24	236	4.0	8.54	593.4						
12/31/2010	14:30:54	109	4.0	8.55	595.4						
12/31/2010	14:31:24	100	4.0	8.55	597.4						
12/31/2010	14:31:54	138	4.1	8.79	599.4						
12/31/2010	14:31:56					Pump 219 bbls H2O					
12/31/2010	14:31:56	269	4.1	8.84	599.5						
12/31/2010	14:32:24	103	3.8	8.93	601.4						
12/31/2010	14:32:54	304	3.8	8.84	603.3						
12/31/2010	14:33:24	191	3.8	8.80	605.2						
12/31/2010	14:33:54	360	5.5	8.77	607.6						
12/31/2010	14:34:24	318	6.1	8.74	610.6						
12/31/2010	14:34:54	179	5.6	8.68	613.6						
12/31/2010	14:35:24	323	6.3	8.60	616.7						
12/31/2010	14:35:54	338	6.2	8.51	619.8						
12/31/2010	14:36:24	318	6.2	8.35	622.9						
12/31/2010	14:36:54	338	6.2	8.16	626.0						
12/31/2010	14:37:24	267	6.2	8.09	629.2						
12/31/2010	14:37:54	199	4.5	8.20	632.0						
12/31/2010	14:38:24	269	4.6	8.38	634.2						
12/31/2010	14:38:54	265	4.5	8.49	636.4						
12/31/2010	14:39:24	248	4.5	8.53	638.7						
12/31/2010	14:39:54	257	4.5	8.52	640.9						
12/31/2010	14:40:24	245	4.5	8.51	643.2						
12/31/2010	14:40:54	255	4.4	8.49	645.4						
12/31/2010	14:41:24	268	4.5	8.40	647.6						
12/31/2010	14:41:54	250	4.4	8.47	649.9						
12/31/2010	14:42:24	262	4.5	8.50	652.1						
12/31/2010	14:42:54	276	4.5	8.53	654.4						
12/31/2010	14:43:24	272	4.5	8.52	656.6						
12/31/2010	14:43:54	279	4.5	8.51	658.9						
12/31/2010	14:44:24	262	4.4	8.49	661.1						
12/31/2010	14:44:54	296	4.5	8.39	663.3						
12/31/2010	14:45:24	282	4.5	8.54	665.6						
12/31/2010	14:45:54	274	4.5	8.54	667.8						
12/31/2010	14:46:24	283	4.5	8.54	670.0						
12/31/2010	14:46:54	300	4.5	8.54	672.3						

Well SGU 8504D-25 F25 496 8504D-25			Field Story Gulch		Job Start Dec/30/2010		Customer Encana Oil & Gas		Job Number 465807	
Date	Time 24-hr clock	Treating Pressure PSI		Flow Rate B/M	Density LB/G	Volume BBL	Message			
12/31/2010	14:47:32						Good Cement to Surface @ 30bbls away			
12/31/2010	14:47:32	292		4.5	8.54	675.1				
12/31/2010	14:47:54	298		4.5	8.54	676.7				
12/31/2010	14:48:24	289		4.5	8.54	679.0				
12/31/2010	14:48:54	303		4.5	8.54	681.2				
12/31/2010	14:49:24	296		4.5	8.54	683.4				
12/31/2010	14:49:54	321		4.5	8.54	685.7				
12/31/2010	14:50:24	308		4.5	8.54	687.9				
12/31/2010	14:50:54	322		4.5	8.54	690.1				
12/31/2010	14:51:24	323		4.5	8.54	692.4				
12/31/2010	14:51:54	345		4.5	8.54	694.6				
12/31/2010	14:52:24	337		4.5	8.54	696.8				
12/31/2010	14:52:54	335		4.5	8.54	699.0				
12/31/2010	14:53:24	338		4.5	8.54	701.3				
12/31/2010	14:53:54	339		4.5	8.54	703.5				
12/31/2010	14:54:24	354		4.5	8.54	705.7				
12/31/2010	14:54:54	356		4.5	8.54	708.0				
12/31/2010	14:55:24	356		4.5	8.54	710.2				
12/31/2010	14:55:54	360		4.5	8.54	712.4				
12/31/2010	14:56:24	369		4.5	8.54	714.7				
12/31/2010	14:56:54	373		4.5	8.54	716.9				
12/31/2010	14:57:24	384		4.5	8.54	719.1				
12/31/2010	14:57:54	378		4.5	8.54	721.4				
12/31/2010	14:58:24	389		4.5	8.54	723.6				
12/31/2010	14:58:54	391		4.4	8.54	725.8				
12/31/2010	14:59:24	400		4.5	8.54	728.0				
12/31/2010	14:59:54	401		4.5	8.54	730.3				
12/31/2010	15:00:24	402		4.5	8.54	732.5				
12/31/2010	15:00:54	410		4.5	8.54	734.7				
12/31/2010	15:01:24	408		4.5	8.54	737.0				
12/31/2010	15:01:54	415		4.5	8.54	739.2				
12/31/2010	15:02:24	414		4.5	8.54	741.4				
12/31/2010	15:02:54	412		4.5	8.54	743.6				
12/31/2010	15:03:24	415		4.5	8.54	745.9				
12/31/2010	15:03:54	403		4.5	8.54	748.1				
12/31/2010	15:04:24	420		4.5	8.54	750.3				
12/31/2010	15:04:54	409		4.5	8.54	752.6				
12/31/2010	15:05:24	407		4.5	8.54	754.8				
12/31/2010	15:05:54	402		4.5	8.54	757.0				
12/31/2010	15:06:24	416		4.5	8.54	759.2				
12/31/2010	15:06:54	402		4.5	8.55	761.5				
12/31/2010	15:07:24	413		4.5	8.54	763.7				
12/31/2010	15:07:54	387		4.5	8.54	765.9				
12/31/2010	15:08:24	415		4.5	8.54	768.2				
12/31/2010	15:08:54	409		4.5	8.54	770.4				
12/31/2010	15:09:24	403		4.5	8.54	772.6				
12/31/2010	15:09:54	413		4.4	8.54	774.8				
12/31/2010	15:10:24	387		4.5	8.54	777.1				
12/31/2010	15:10:54	405		4.5	8.54	779.3				
12/31/2010	15:11:24	399		4.5	8.55	781.5				
12/31/2010	15:11:54	408		4.5	8.54	783.8				
12/31/2010	15:12:24	383		4.5	8.55	786.0				
12/31/2010	15:12:54	400		4.5	8.54	788.2				
12/31/2010	15:13:24	393		4.5	8.54	790.4				

Well SGU 8504D-25 F25 496 8504D-25			Field Story Gulch		Job Start Dec/30/2010		Customer Encana Oil & Gas		Job Number 465807	
Date	Time 24-hr clock	Treating Pressure PSI	Flow Rate B/M	Density LB/G	Volume BBL	Message				
12/31/2010	15:14:24	418	4.5	8.55	794.9					
12/31/2010	15:14:54	411	4.5	8.55	797.1					
12/31/2010	15:15:24	402	4.5	8.55	799.4					
12/31/2010	15:15:51					Good Returns Thruout Disp.				
12/31/2010	15:15:51	415	4.5	8.55	801.4					
12/31/2010	15:15:54	427	4.5	8.55	801.6					
12/31/2010	15:16:24	319	2.8	8.55	803.8					
12/31/2010	15:16:54	314	2.2	8.54	804.9					
12/31/2010	15:17:24	538	2.2	8.54	806.0					
12/31/2010	15:17:52					Bump Top Plug				
12/31/2010	15:17:52	761	0.0	8.55	806.3					
12/31/2010	15:17:54					End Displacement				
12/31/2010	15:17:54	760	0.0	8.55	806.3					
12/31/2010	15:18:24	760	0.0	8.55	806.3					
12/31/2010	15:18:54	759	0.0	8.55	806.4					
12/31/2010	15:19:11					Float Held/ 1/2bbl back				
12/31/2010	15:19:11	758	0.0	8.55	806.4					
12/31/2010	15:19:24	758	0.0	8.54	806.4					
12/31/2010	15:19:54	756	0.0	8.55	806.4					
12/31/2010	15:20:24	754	0.0	8.55	806.4					
12/31/2010	15:20:54	754	0.0	8.55	806.4					
12/31/2010	15:21:24	752	0.0	8.54	806.4					
12/31/2010	15:21:54	752	0.0	8.55	806.4					
12/31/2010	15:22:24	485	0.0	8.54	806.5					
12/31/2010	15:22:54	1	0.0	8.54	806.5					
12/31/2010	15:23:24	1	0.0	8.55	806.5					
12/31/2010	15:23:54	1	0.0	8.55	806.5					
12/31/2010	15:24:18					Wait on Rig to Nipple Parasite				
12/31/2010	15:24:18	1	0.0	8.55	806.5					
12/31/2010	15:24:24	1	0.0	8.55	806.5					
12/31/2010	15:24:54	1	0.0	8.55	806.5					
12/31/2010	15:25:24	0	0.0	8.55	806.5					
12/31/2010	15:25:54	1	0.0	8.55	806.6					
12/31/2010	15:26:24	3	0.0	8.55	806.6					
12/31/2010	15:26:54	0	0.0	8.55	806.6					
12/31/2010	15:27:24	1	0.0	8.55	806.6					
12/31/2010	15:27:54	0	0.0	8.55	806.6					
12/31/2010	15:28:24	0	0.0	8.55	806.6					
12/31/2010	15:28:54	0	0.0	8.55	806.7					
12/31/2010	15:29:24	-0	0.0	8.55	806.7					
12/31/2010	15:29:54	-0	0.0	8.55	806.7					
12/31/2010	15:30:24	-1	0.0	8.55	806.7					
12/31/2010	15:30:54	-1	0.0	8.55	806.7					
12/31/2010	15:31:24	-1	0.0	8.55	806.7					
12/31/2010	15:31:54	-0	0.0	8.55	806.7					
12/31/2010	15:32:24	0	0.0	8.55	806.8					
12/31/2010	15:32:54	-0	0.0	8.55	806.8					
12/31/2010	15:33:24	-0	0.0	8.55	806.8					
12/31/2010	15:33:54	-0	0.0	8.55	806.8					
12/31/2010	15:34:24	0	0.0	8.55	806.8					
12/31/2010	15:34:54	1	0.0	8.55	806.8					
12/31/2010	15:35:24	0	0.0	8.55	806.9					
12/31/2010	15:35:54	-0	0.0	8.55	806.9					
12/31/2010	15:36:24	1	0.0	8.55	806.9					

Well SGU 8504D-25 F25 496 8504D-25			Field Story Gulch		Job Start Dec/30/2010		Customer Encana Oil & Gas		Job Number 465807	
Date	Time 24-hr clock	Treating Pressure PSI	Flow Rate B/M	Density LB/G	Volume BBL	Message				
12/31/2010	15:37:24	0	0.0	8.55	806.9					
12/31/2010	15:37:54	0	0.0	8.55	806.9					
12/31/2010	15:38:24	1	0.0	8.55	806.9					
12/31/2010	15:38:54	1	0.0	8.55	807.0					
12/31/2010	15:39:24	-0	0.0	8.55	807.0					
12/31/2010	15:39:54	1	0.0	8.55	807.0					
12/31/2010	15:40:24	3	0.0	8.55	807.0					
12/31/2010	15:40:54	1	0.0	8.55	807.0					
12/31/2010	15:41:24	1	0.0	8.55	807.0					
12/31/2010	15:41:54	3	0.0	8.55	807.0					
12/31/2010	15:42:24	3	0.0	8.55	807.1					
12/31/2010	15:42:54	3	0.0	8.55	807.1					
12/31/2010	15:43:24	4	0.0	8.55	807.1					
12/31/2010	15:43:54	4	0.0	8.55	807.1					
12/31/2010	15:44:24	4	0.0	8.55	807.1					
12/31/2010	15:44:54	4	0.0	8.55	807.1					
12/31/2010	15:45:24	4	0.0	8.55	807.2					
12/31/2010	15:45:54	4	0.0	8.55	807.2					
12/31/2010	15:46:24	4	0.0	8.55	807.2					
12/31/2010	15:46:54	3	0.0	8.55	807.2					
12/31/2010	15:47:24	3	0.0	8.55	807.2					
12/31/2010	15:47:54	4	0.0	8.55	807.2					
12/31/2010	15:48:24	5	0.0	8.55	807.2					
12/31/2010	15:48:54	4	0.0	8.55	807.3					
12/31/2010	15:49:24	4	0.0	8.55	807.3					
12/31/2010	15:49:54	4	0.0	8.55	807.3					
12/31/2010	15:50:24	4	0.0	8.55	807.3					
12/31/2010	15:50:54	4	0.0	8.55	807.3					
12/31/2010	15:51:24	2	0.0	8.55	807.3					
12/31/2010	15:51:54	1	0.0	8.55	807.3					
12/31/2010	15:52:24	1	0.0	8.39	807.4					
12/31/2010	15:52:54	1	0.0	8.55	807.4					
12/31/2010	17:57:38					Pump out Parasite line				
12/31/2010	17:57:38					8 bbls Total				
12/31/2010	17:57:38	1	0.0	8.56	807.4					
12/31/2010	17:57:39					End Job				
12/31/2010	17:57:39	1	0.0	8.56	807.4					
12/31/2010	17:57:54	1	0.0	8.56	807.4					
12/31/2010	17:58:24	2	0.0	8.56	807.4					
12/31/2010	17:58:54	5	0.1	8.56	807.5					
12/31/2010	17:59:24	10	0.1	8.56	807.5					
12/31/2010	17:59:54	13	0.1	8.56	807.5					
12/31/2010	18:00:24	10	0.0	8.56	807.5					
12/31/2010	18:00:54	12	0.0	8.56	807.5					
12/31/2010	18:01:24	16	0.0	8.56	807.5					
12/31/2010	18:01:54	13	0.0	8.56	807.6					
12/31/2010	18:02:24	11	0.0	8.56	807.6					
12/31/2010	18:02:54	65	0.3	8.56	807.7					
12/31/2010	18:03:24	64	0.4	8.57	807.8					
12/31/2010	18:03:54	62	0.9	8.56	808.1					
12/31/2010	18:04:24	61	1.4	8.56	808.6					
12/31/2010	18:04:54	64	2.9	8.55	809.8					
12/31/2010	18:05:24	62	2.9	8.55	811.3					
12/31/2010	18:05:54	60	2.9	8.55	812.7					

Well SGU 8504D-25 F25 496 8504D-25			Field Story Gulch		Job Start Dec/30/2010	Customer Encana Oil & Gas		Job Number 465807	
Date	Time 24-hr clock	Treating Pressure PSI	Flow Rate B/M	Density LB/G	Volume BBL		Message		
12/31/2010	18:06:54	180	1.2	8.55	815.3				

Post Job Summary

Average Pump Rates, bbl/min					Volume of Fluid Injected, bbl						
Slurry 5.0	N2	Mud	Maximum Rate 6.5		Total Slurry 562.0	Mud 160.0	Spacer 160.0	N2			
Treating Pressure Summary, psi					Breakdown Fluid						
Maximum 3000	Final 750	Average 200	Bump Plug to 750	Breakdown	Type FreshWater	Volume 900.0 bbl		Density 8.34 lb/gal			
Avg. N2 Percent		Designed Slurry Volume 562.0 bbl		Displacement 229.0 bbl	Mix Water Temp 80 degF	Cement Circulated to Surface? <input checked="" type="checkbox"/>		Volume 200.0 bbl			
						Washed Thru Perfs <input type="checkbox"/>		To			
Customer or Authorized Representative			Schlumberger Supervisor			Circulation Lost <input type="checkbox"/>		Job Completed <input checked="" type="checkbox"/>			
Mike Quintana			B. Farnham			-		-			



Service Quality Evaluation

Client:	Encana Oil & Gas
Field:	Story Gulch
Rig:	Patterson 308
Well:	SGU 8504D-25 F25 496
Service Line:	Cementing
Job Type:	9 5/8" Surface

Service Order #:	
Date:	Nov/17/2010
Operating Time:	0.0
Client Rep:	Encana Oil & Gas
Schlumberger Engineer:	B. Farnham
Schlumberger FSM:	

Main Objective:

To be completed by Company Rep. Please answer Y (Yes) or N (No) and add any comments below.

		Score	Yes / No				Result
1	HSE						
1a	Free of lost time injury and compliance with SLB and loc. spec. HSE practice	5	yes	<input type="checkbox"/>	no	<input checked="" type="checkbox"/>	0
1b	Free of environmental spill or non-compliant discharge	5	yes	<input type="checkbox"/>	no	<input checked="" type="checkbox"/>	0
1c	Free of RIRs	5	yes	<input type="checkbox"/>	no	<input checked="" type="checkbox"/>	0
1d	Wellsite left clean	4	yes	<input type="checkbox"/>	no	<input checked="" type="checkbox"/>	0
Sub-total							0%

2	Design / Preparation						
2a	Program incl. job simulation (CemCADE) & pump schedule / tool hydraulic calcs	3	yes	<input type="checkbox"/>	no	<input checked="" type="checkbox"/>	0
2b	Equipment maintenance schedule completed / Green tagged	2	yes	<input type="checkbox"/>	no	<input checked="" type="checkbox"/>	0
2c	All materials and equipment required for job/contingency checked & on location	2	yes	<input type="checkbox"/>	no	<input checked="" type="checkbox"/>	0
2d	Safety / pre-job meeting conducted with all involved present	2	yes	<input type="checkbox"/>	no	<input checked="" type="checkbox"/>	0
Sub-total							0%

3	Execution						
3a	Lost time < 30 mins	3	yes	<input type="checkbox"/>	no	<input checked="" type="checkbox"/>	0
3b	Equipment pressure tested succesfully	3	yes	<input type="checkbox"/>	no	<input checked="" type="checkbox"/>	0
3c	All key parameters monitored and recorded accurately (Pressure, Rate, Density)	2	yes	<input type="checkbox"/>	no	<input checked="" type="checkbox"/>	0
3d	Plugs / darts released and tested succesfully	2	yes	<input type="checkbox"/>	no	<input checked="" type="checkbox"/>	0
3e	Density variation met expectations	2	yes	<input type="checkbox"/>	no	<input checked="" type="checkbox"/>	0
3f	Personnel performed as per expectations	2	yes	<input type="checkbox"/>	no	<input checked="" type="checkbox"/>	0
3g	Equipment performed as per expectations	2	yes	<input type="checkbox"/>	no	<input checked="" type="checkbox"/>	0
3h	Job pumped per design	3	yes	<input type="checkbox"/>	no	<input checked="" type="checkbox"/>	0
3i	Did job start on time	2	yes	<input type="checkbox"/>	no	<input checked="" type="checkbox"/>	0
3j	Free of Operational failures (screen out, Cementing Example, etc.)	3	yes	<input type="checkbox"/>	no	<input checked="" type="checkbox"/>	0
Sub-total							0%

4	Evaluation						
4a	Main job objective achieved with no consequential non-productive time	10	yes	<input type="checkbox"/>	no	<input checked="" type="checkbox"/>	0
Sub-total							0%

Total 0%

Comments: (Please include a brief explanation for a "NO" response and summarize any innovations attempted on this well.)

Client:	Schlumberger:
Client Signature:	Schlumberger Signature: