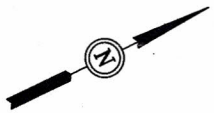
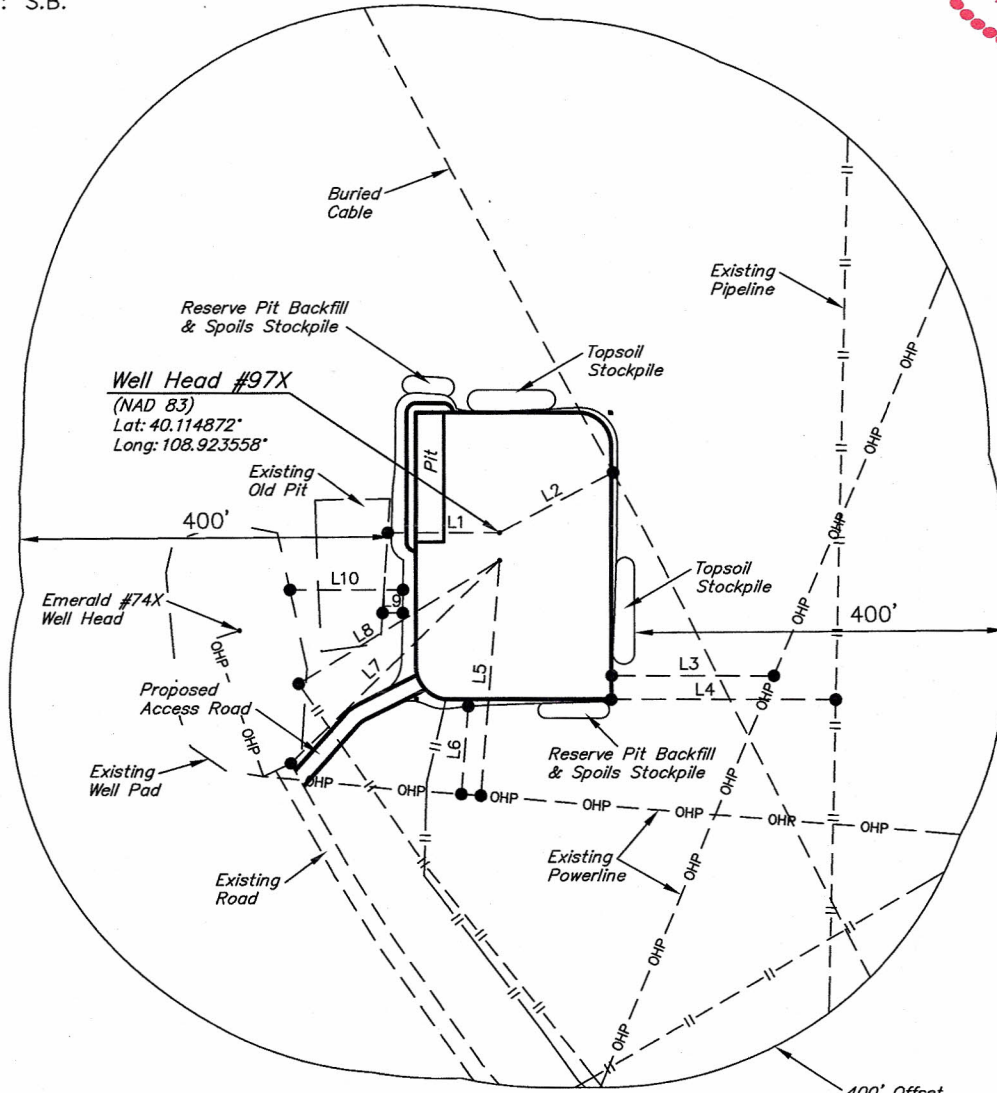


CHEVRON U.S.A., INC.
ADDENDUM TO LEGAL PLAT FOR
EMERALD #97X & #98X
SECTION 26, T2N, R103W, 6th P.M.
SW 1/4 NE 1/4



SCALE: 1" = 200'
 DATE: 11-09-11
 DRAWN BY: S.B.



LINE TABLE		
LINE	DIRECTION	LENGTH
L1	S25°44'14"W	120.32'
L2	N02°19'55"W	138.51'
L3	N25°44'14"E	174.67'
L4	N25°44'14"E	241.72'
L5	S59°39'57"E	255.02'
L6	S59°39'57"E	95.48'
L7	S18°30'49"E	314.26'
L8	S05°52'57"E	254.21'
L9	S25°44'14"W	21.71'
L10	S25°44'14"W	121.74'