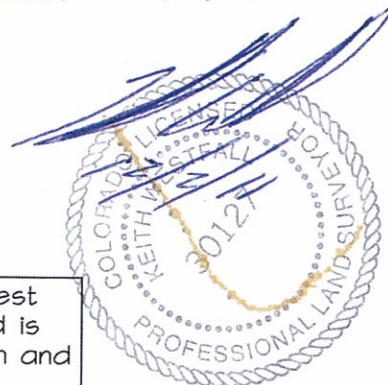


High Prairie Surveying of Kiowa, Colorado has in accordance with a request from **Mull Drilling Co.** has determined the location of **TSA UNIT 1-14** to be 2150 feet FNL, and 171 feet FWL, (90° off Section lines) of SECTION 14, Township 17s, Range 45w of the 6th Principal Meridian, **Kiowa County**, Colorado.

Date: Staked on November 30, 2011, drawn on December 1, 2011.

Re: Staked by Keith Westfall
Drawn: Drawn by Elijah Frane

Location Drawing

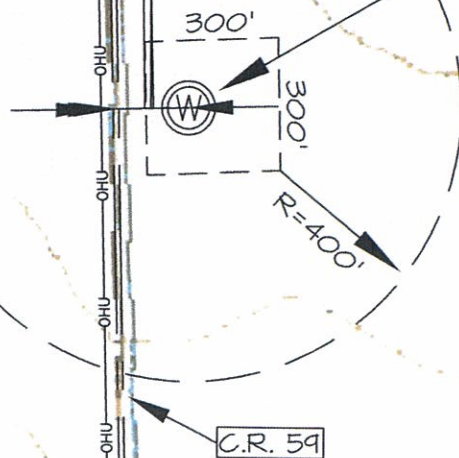


A Power line exists approx. 197' West of staked location, Center of Road is approx 171' West of staked location and East edge of Road is approx. 159' West of staked location.

4126 X

197' To Power Line
171' To Center of Road
159' To East Edge of Road

MULL DRILLING CO.
TSA UNIT 1-14
NW1/4 SEC. 14-17S-45W
KIOWA, Co. COLORADO



LANDING S