

---

# **BILL BARRETT CORPORATION E-BILL**

---

**KAUFMAN 23D-24-692  
MAMM CREEK  
Garfield County , Colorado**

**Cement Surface Casing**  
**14-Jun-2011**

**Post Job Report**

## The Road to Excellence Starts with Safety

Sold To #: 343492	Ship To #: 2858927	Quote #:	Sales Order #: 8235680
Customer: BILL BARRETT CORPORATION E-BILL	Customer Rep: Henderson, Josh		
Well Name: KAUFMAN	Well #: 23D-24-694	API/UWI #: 05-045-19648	
Field: MAMM CREEK	City (SAP): SILT	County/Parish: Garfield	State: Colorado
Lat: N 39.51 deg. OR N 39 deg. 30 min. 37.544 secs.	Long: W 107.615 deg. OR W -108 deg. 23 min. 6.99 secs.		
Contractor: PATTERSON 307	Rig/Platform Name/Num: PATTERSON 307		
Job Purpose: Cement Surface Casing			
Well Type: Development Well	Job Type: Cement Surface Casing		
Sales Person: METLI, MARSHALL	Srv Supervisor: CHASTAIN, DERICK	MBU ID Emp #: 455848	

## Job Personnel

HES Emp Name	Exp Hrs	Emp #	HES Emp Name	Exp Hrs	Emp #	HES Emp Name	Exp Hrs	Emp #
BROWN, TRAVIS A	9	396848	CARTER, ERIC Earl	9	345598	CHASTAIN, DERICK Allan	9	455848
DEUSSEN, EDWARD Eric	9	485182						

## Equipment

HES Unit #	Distance-1 way	HES Unit #	Distance-1 way	HES Unit #	Distance-1 way	HES Unit #	Distance-1 way
10551730C	120 mile	10784080	120 mile	10804579	120 mile	10951244	120 mile
10973571	120 mile						

## Job Hours

Date	On Location Hours	Operating Hours	Date	On Location Hours	Operating Hours	Date	On Location Hours	Operating Hours
6/13/2011	4	0	6/14/2011	5	2			

**TOTAL** Total is the sum of each column separately

Job				Job Times			
Formation Name				Date	Time	Time Zone	
Formation Depth (MD)	Top		Bottom	Called Out	13 - Jun - 2011	15:00	MST
Form Type	BHST			On Location	13 - Jun - 2011	20:00	MST
Job depth MD	850. ft			Job Started	14 - Jun - 2011	03:32	MST
Water Depth	Wk Ht Above Floor			Job Completed	14 - Jun - 2011	04:21	MST
Perforation Depth (MD)	From		To	Departed Loc	14 - Jun - 2011	00:00	MST

## Well Data

Description	New / Used	Max pressure psig	Size in	ID in	Weight lbm/ft	Thread	Grade	Top MD ft	Bottom MD ft	Top TVD ft	Bottom TVD ft
-------------	------------	-------------------	---------	-------	---------------	--------	-------	-----------	--------------	------------	---------------

Sales/Rental/3<sup>rd</sup> Party (HES)

Description	Qty	Qty uom	Depth	Supplier
PLUG,CMTG,TOP,9 5/8,HWE,8.16 MIN/9.06 MA	1	EA		

## Tools and Accessories

Type	Size	Qty	Make	Depth	Type	Size	Qty	Make	Depth	Type	Size	Qty	Make
Guide Shoe					Packer					Top Plug	9 5/8	1	HES
Float Shoe					Bridge Plug					Bottom Plug			
Float Collar					Retainer					SSR plug set			
Insert Float										Plug Container	9 5/8	1	HES
Stage Tool										Centralizers			

## Miscellaneous Materials

Gelling Agt	Conc	Surfactant	Conc	Acid Type	Qty	Conc	%
Treatment Fld	Conc	Inhibitor	Conc	Sand Type	Size		Qty

## Fluid Data

Stage/Plug #: 1									
Fluid #	Stage Type	Fluid Name	Qty	Qty uom	Mixing Density lbm/gal	Yield ft <sup>3</sup> /sk	Mix Fluid Gal/sk	Rate bbl/min	Total Mix Fluid Gal/sk

Stage/Plug #: 1									
Fluid #	Stage Type	Fluid Name	Qty	Qty uom	Mixing Density lbm/gal	Yield ft <sup>3</sup> /sk	Mix Fluid Gal/sk	Rate bbl/min	Total Mix Fluid Gal/sk
1	Water Spacer		20.00	bbl	8.34	.0	.0	5	
2	VersaCem Lead	VERSACEM (TM) SYSTEM (452010)	120.0	sacks	12.3	2.38	13.75	5	13.75
	13.75 Gal	FRESH WATER							
3	SwiftCem Tail Cement	SWIFTCEM (TM) SYSTEM (452990)	120.0	sacks	14.2	1.43	6.85	5	6.85
	6.85 Gal	FRESH WATER							
4	Displacement		62.00	bbl	8.34	.0	.0	5	
Calculated Values		Pressures		Volumes					
Displacement	61.4	Shut In: Instant		Lost Returns	0	Cement Slurry	81.5	Pad	
Top Of Cement	SURFACE	5 Min		Cement Returns	26	Actual Displacement	61.4	Treatment	
Frac Gradient		15 Min		Spacers	20	Load and Breakdown		Total Job	164
Rates									
Circulating		Mixing	5	Displacement	5	Avg. Job			5
Cement Left In Pipe	Amount	44.9 ft	Reason	Shoe Joint					
Frac Ring # 1 @	ID	Frac ring # 2 @	ID	Frac Ring # 3 @	ID	Frac Ring # 4 @	ID		
The Information Stated Herein Is Correct				Customer Representative Signature					

*The Road to Excellence Starts with Safety*

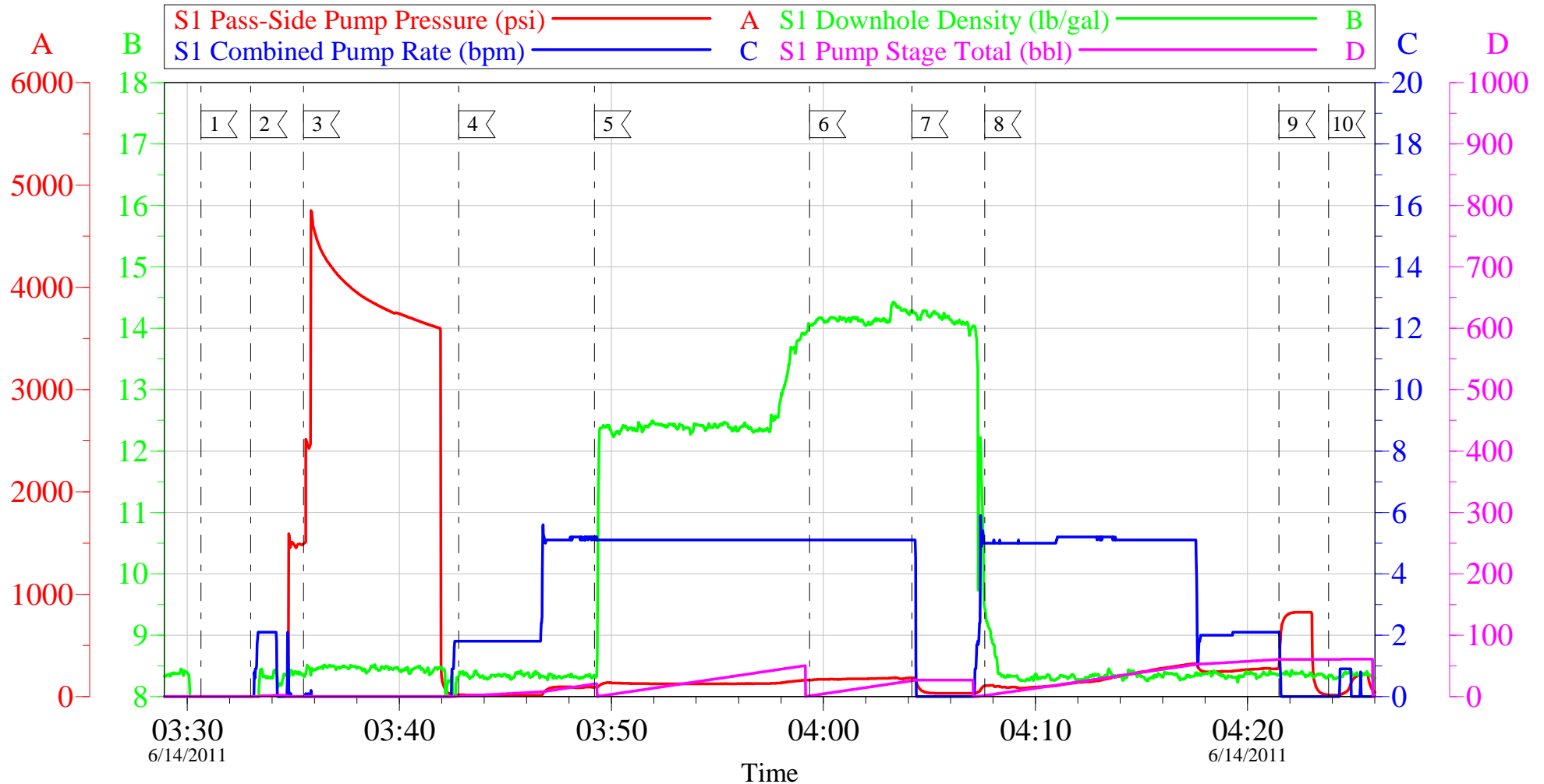
<b>Sold To #:</b> 343492	<b>Ship To #:</b> 2858927	<b>Quote #:</b>	<b>Sales Order #:</b> 8235680
<b>Customer:</b> BILL BARRETT CORPORATION E-BILL		<b>Customer Rep:</b> Henderson, Josh	
<b>Well Name:</b> KAUFMAN	<b>Well #:</b> 23D-24-694	<b>API/UWI #:</b> 05-045-19648	
<b>Field:</b> MAMM CREEK	<b>City (SAP):</b> SILT	<b>County/Parish:</b> Garfield	<b>State:</b> Colorado
<b>Legal Description:</b>			
<b>Lat:</b> N 39.51 deg. OR N 39 deg. 30 min. 37.544 secs.		<b>Long:</b> W 107.615 deg. OR W -108 deg. 23 min. 6.99 secs.	
<b>Contractor:</b> PATTERSON 307		<b>Rig/Platform Name/Num:</b> PATTERSON 307	
<b>Job Purpose:</b> Cement Surface Casing			<b>Ticket Amount:</b>
<b>Well Type:</b> Development Well		<b>Job Type:</b> Cement Surface Casing	
<b>Sales Person:</b> METLI, MARSHALL		<b>Srvc Supervisor:</b> CHASTAIN, DERICK	<b>MBU ID Emp #:</b> 455848

Activity Description	Date/Time	Cht #	Rate bbl/min	Volume bbl		Pressure psig		Comments
				Stage	Total	Tubing	Casing	
Arrive at Location from Service Center	06/13/2011 20:00							
Assessment Of Location Safety Meeting	06/13/2011 20:10							WITH ALL HES PERSONNEL, UTILIZED JSA
Other	06/13/2011 20:20							SPOT EQUIPMENT
Pre-Rig Up Safety Meeting	06/13/2011 20:25							WITH ALL HES PERSONNEL AND RIG CREW
Rig-Up Equipment	06/13/2011 20:30							1 HT 400 PUMP, 1 660 BULK TRAILER, 1 F-450 PICK-UP, 1 PLUG CONTAINER
Pre-Job Safety Meeting	06/14/2011 03:15							WITH ALL PERSONNEL ON LOCATION
Start Job	06/14/2011 03:32							TD 850', TP 838.8', SJ 44.9', FC 793.9, 9 5/8" 36# CASING, 12 3/8" AIR DRILLED HOLE
Pump Water	06/14/2011 03:33		2	2			7.0	FILL LINES
Test Lines	06/14/2011 03:34					3000.0		HELD PRESSURE FOR 2 MIN, NO LEAKS
Pump Spacer 1	06/14/2011 03:42		5	20			90.0	PUMP FRESH WATER AT 2 BPM UNTIL TUB WEIGHED UP, THEN SPED RATE TO 5 BPM
Pump Lead Cement	06/14/2011 03:49		5	50.9			160.0	120 SKS, 12.3 PPG, 2.38 FT3/SK, 13.77 GAL/SK
Pump Tail Cement	06/14/2011 03:59		5	30.6			180.0	120 SKS, 14.2 PPG, 1.43 FT3/SK, 6.85 GAL/SK
Shutdown	06/14/2011 04:04							

Activity Description	Date/Time	Cht #	Rate bbl/min	Volume bbl		Pressure psig		Comments
				Stage	Total	Tubing	Casing	
Drop Top Plug	06/14/2011 04:06							LAUNCH PLUG, VERIFIED PLUG LEFT CONTAINER
Pump Displacement	06/14/2011 04:07		5	61.4			325.0	FRESH WATER, CEMENT RETURNS TO SURFACE AT 35 BBLS AWAY ON DISPLACEMENT, 26 BBLS CEMENT TO SURFACE.
Slow Rate	06/14/2011 04:17		2	51			280.0	SLOWED 10 BBLS PRIOR TO BUMPING PLUG
Bump Plug	06/14/2011 04:21		2	61.4			760.0	PLUG BUMPED AT 280 PSI, PRESSURED UP TO 760 PSI
Check Floats	06/14/2011 04:23							FLOATS DID NOT HOLD
Pressure Up Well	06/14/2011 04:24						225.0	
Shut In Well	06/14/2011 04:25						225.0	SHUT IN WELL AT 225 PSI
End Job	06/14/2011 04:26							NO SUGAR USED, NO ADD HOURS.
Pre-Rig Down Safety Meeting	06/14/2011 04:30							WITH ALL HES PERSONNEL, UTILIZED JSA
Rig-Down Equipment	06/14/2011 04:40							RIGGED DOWN ENOUGH TO ALLOW RIG TO MOVE

# Bill Barrett - Kaufman 23D-24-692

Surface



## Local Event Log

1 START JOB	03:30:39	2 FILL LINES	03:32:59	3 PRESSURE TEST	03:35:29
4 PUMP SPACER	03:42:49	5 PUMP LEAD CEMENT	03:49:12	6 PUMP TAIL CEMENT	03:59:21
7 SHUT DOWN/CLEAN UP	04:04:10	8 PUMP DISPLACEMENT	04:07:37	9 BUMP PLUG	04:21:29
10 END JOB	04:23:50				

Customer:  
Well Description:  
Company Rep:

Job Date: 14-Jun-2011  
Job Type:  
Cement Supervisor:

Sales Order #: 8235680  
ADC Used:  
Elite #X:

OptiCem v6.4.9  
02-Dec-11 09:44

# HALLIBURTON

## Water Analysis Report

Company: HES

Submitted by: DERICK CHASTAIN

Attention: J. Trout

Lease KAUFMAN

Well # 23D-24-692

Date: 6/14/2011

Date Rec.: 6/14/2011

S.O.# 8235680

Job Type: SURFACE

Specific Gravity	<i>MAX</i>	<b>1</b>
pH	<i>8</i>	<b>6</b>
Potassium (K)	<i>5000</i>	<b>0</b> Mg / L
Calcium (Ca)	<i>500</i>	<b>200</b> Mg / L
Iron (FE2)	<i>300</i>	<b>100</b> Mg / L
Chlorides (Cl)	<i>3000</i>	<b>200</b> Mg / L
Sulfates (SO <sub>4</sub> )	<i>1500</i>	<b>below 200</b> Mg / L
Chlorine (Cl <sub>2</sub> )		<b>0</b> Mg / L
Temp	<i>40-80</i>	<b>50</b> Deg
Total Dissolved Solids		<b>500</b> Mg / L

Respectfully: DERICK CHASTAIN

Title: CEMENTING SUPERVISOR

Location: Grand Junction, CO

NOTICE:

This report is limited to the described sample tested. Any person using or relying on this report agrees that Halliburton shall not be liable for any loss or damage whether due to act or omission resulting from such report or