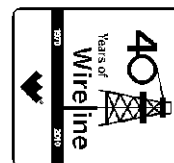




Weatherford

**HOLE VOLUME
CALIPER LOG**

COMPANY **BILL BARRETT CORPORATION**
WELL **JOLLEY 42B-20-691**
FIELD **GIBSON GULCH**
PROVINCE/COUNTY **GARFIELD**
COUNTRY/STATE **U.S.A. / COLORADO**
LOCATION **SHL: 2621' FSL & 1746' FEL**
BHL: 2108' FNL & 664' FEL



SEC	TWP	RGE	Other Services	
20	6S	91W	MPD/MDN	
API Number		05-045-19679	MAI/MFE	
Permit Number				
Permanent Datum G.L., Elevation 6453 feet				
Log Measured From KB				
Drilling Measured From K.B.				
Date	16-AUG-2011			Elevations: KB 6476.00 DF 6476.00 GL 6453.00
Run Number	ONE			
Depth Driller	7943.00	feet		
Depth Logger	5148.00	feet		
First Reading	5125.00			
Last Reading	856.00			
Casing Driller	858.00	feet		
Casing Logger	856.00	feet		
Bit Size	7.875	inches		
Hole Fluid Type	LSND			
Density / Viscosity	10.15 lb/USg	42.00 CP		
PH / Fluid Loss	9.30	8.80 ml/30Min		
Sample Source	FLOW LINE			
Rm @ Measured Temp	2.55 @ 80.0	ohm-m		
Rmf @ Measured Temp	2.04 @ 80.0	ohm-m		
Rmc @ Measured Temp	3.06 @ 80.0	ohm-m		
Source Rmf / Rmc	CALC	CALC		
Rm @ BHT	1.49 @139.0	ohm-m		
Time Since Circulation	5 HOURS			
Max Recorded Temp	139.00	deg F		
Equipment Name	COMPACT			
Equipment / Base	13173	GD JCT		
Recorded By	M. RICHINS			S. GOSWAMI
Witnessed By	C. CROWTON			

BOREHOLE RECORD

Last Edited: 16-AUG-2011 10:18

Bit Size inches	Depth From feet	Depth To feet
8.750	858.00	4896.00
7.875	4896.00	7943.00

CASING RECORD

Type	Size inches	Depth From feet	Shoe Depth feet	Weight pounds/ft
SURFACE	9.625	0.00	858.00	36.00

REMARKS

TOOLS: MCG, MDN, MPD, SKJ, MFE AND MAI RAN IN COMBINATION.

HARDWARE: MPD: 8 INCH PROFILE PLATE USED.
ONE 0.5 INCH STANDOFF USED ON FOCUSED ELECTRIC
TWO 0.5 INCH STANDOFFS USED ON INDUCTION.
DUAL BOWSPRING USED ON NEUTRON.

2.68 G/CC DENSITY MATRIX USED TO CALCULATE POROSITY.

ALL INTERVALS LOGGED AND SCALED PER CUSTOMER'S REQUEST.

TOOLS BRIDGED AT 5150 FEET. LOGGED TO SURFACE PER CUSTOMER REQUEST.

TIGHT PULLS, BOREHOLE SIZE, AND RUGOSITY WILL AFFECT REPEATABILITY AND DATA QUALITY.

CALIPER CHECK IN CASING PRESENTED, REFERENCE I.D. = 8.92" (9 5/8", 36 LB/FT CASING).

8.75 INCH BIT CHANGE AT 4896 FT.

TOTAL HOLE VOLUME FROM BRIDGE (5150 FEET) TO SURFACE CASING = 1980 CU.FT.

ANNULAR VOLUME WITH 4.5 INCH PRODUCTION CASING = 1520 CU.FT.

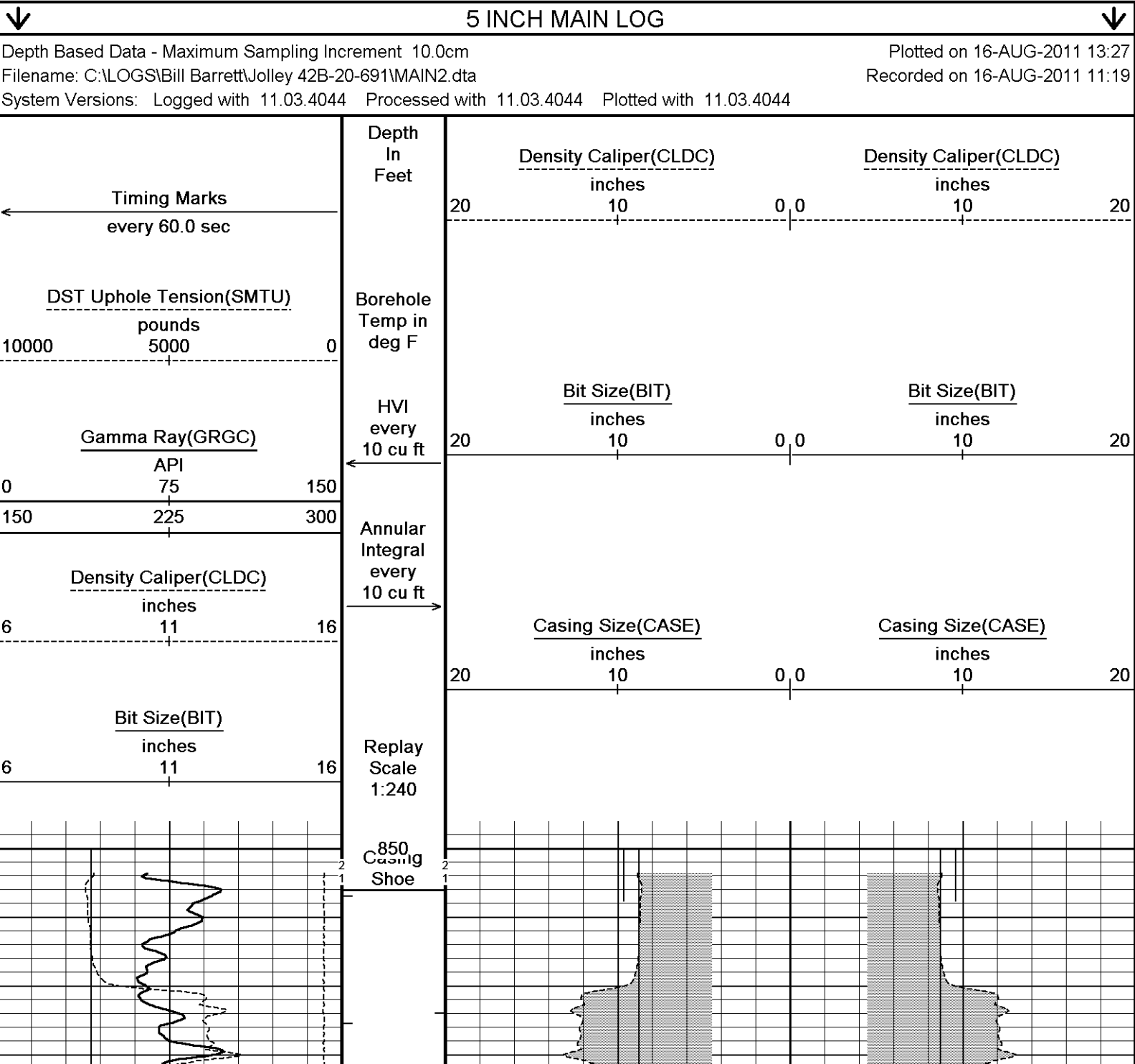
ENGINEER(S): M.RICHINS

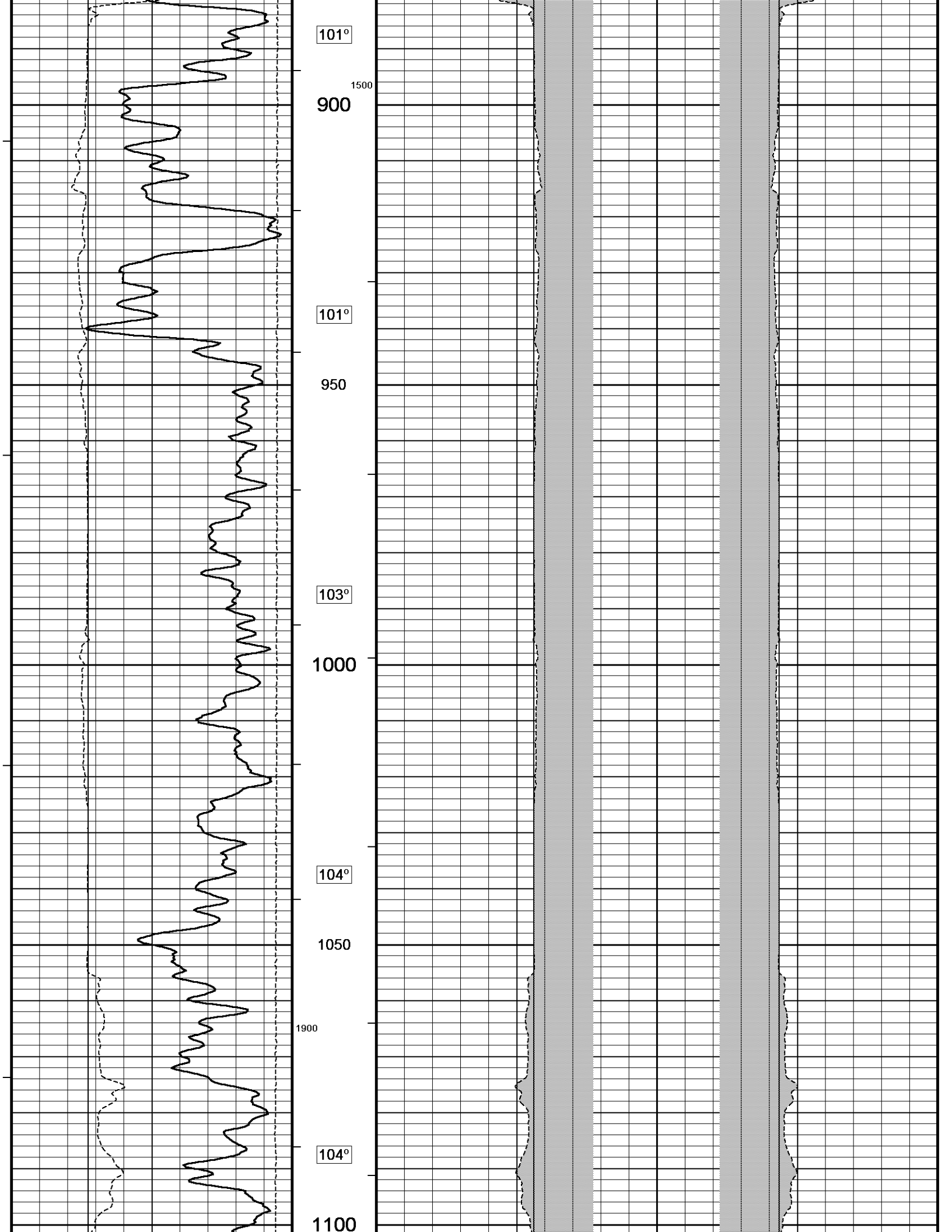
OPERATOR(S): C. ROGERS (JFE), K. BOBLITT, S. GOSWAMI (JFE)

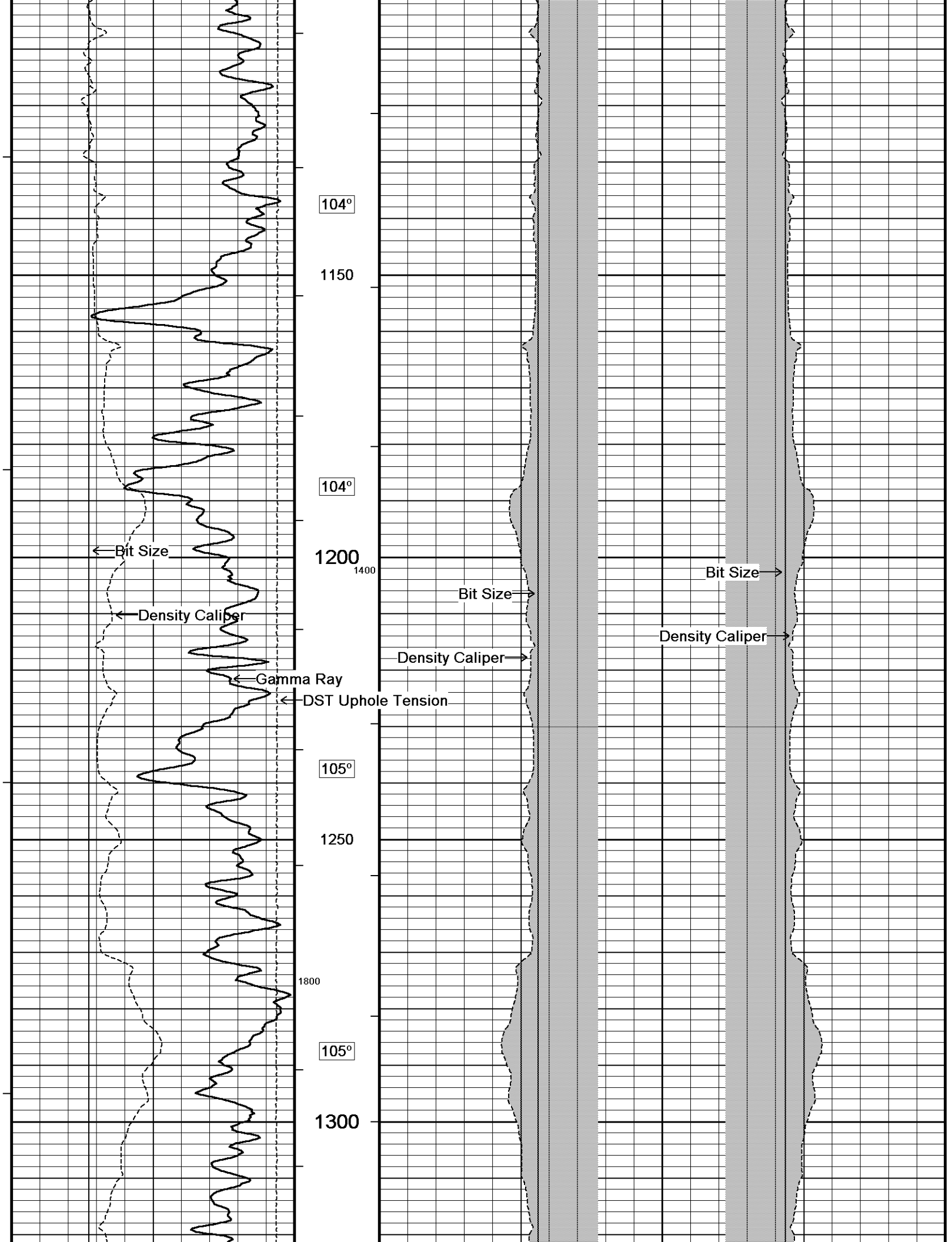
SERVICE ORDER: # 3532397

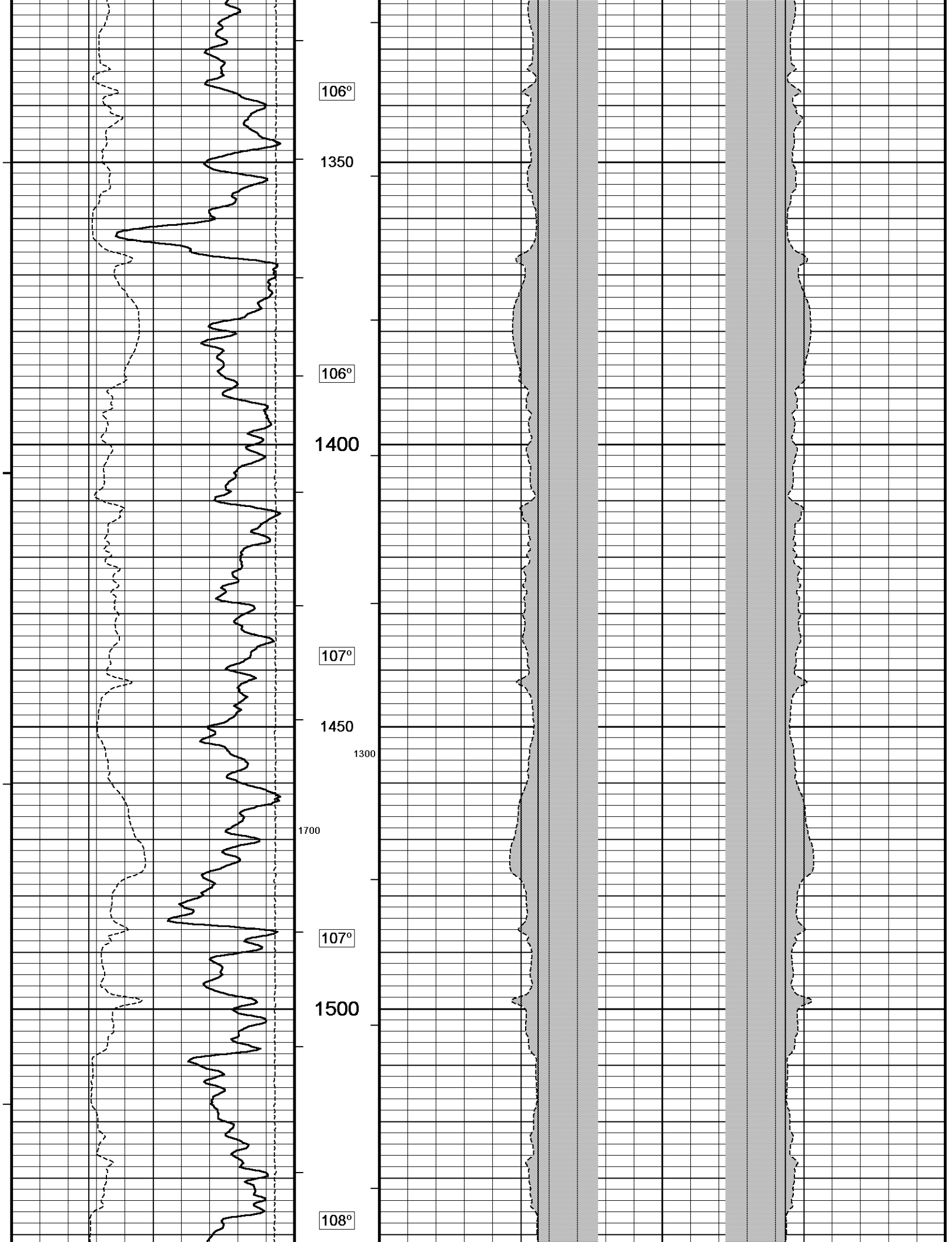
RIG: NABORS #37

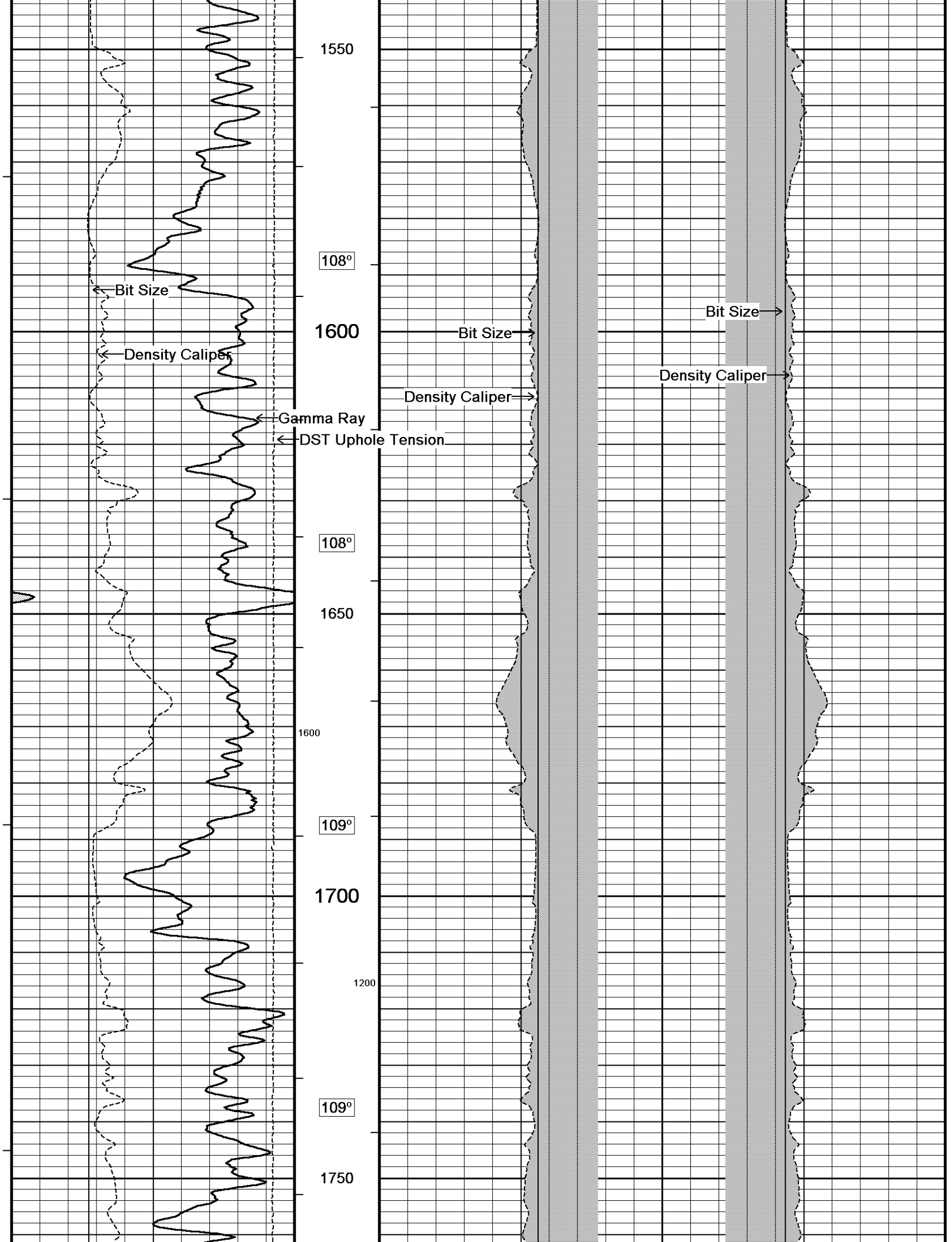
All interpretations are opinions based on inferences from electrical or other measurements and we cannot, and do not, guarantee the accuracy or correctness of any interpretations, and we shall not, except in the case of gross or wilful negligence on our part, be liable or responsible for any loss, costs, damages or expenses incurred or sustained by anyone resulting from any interpretation made by any of our officers, agents or employees. These interpretations are also subject to our general terms and conditions in our price schedule.

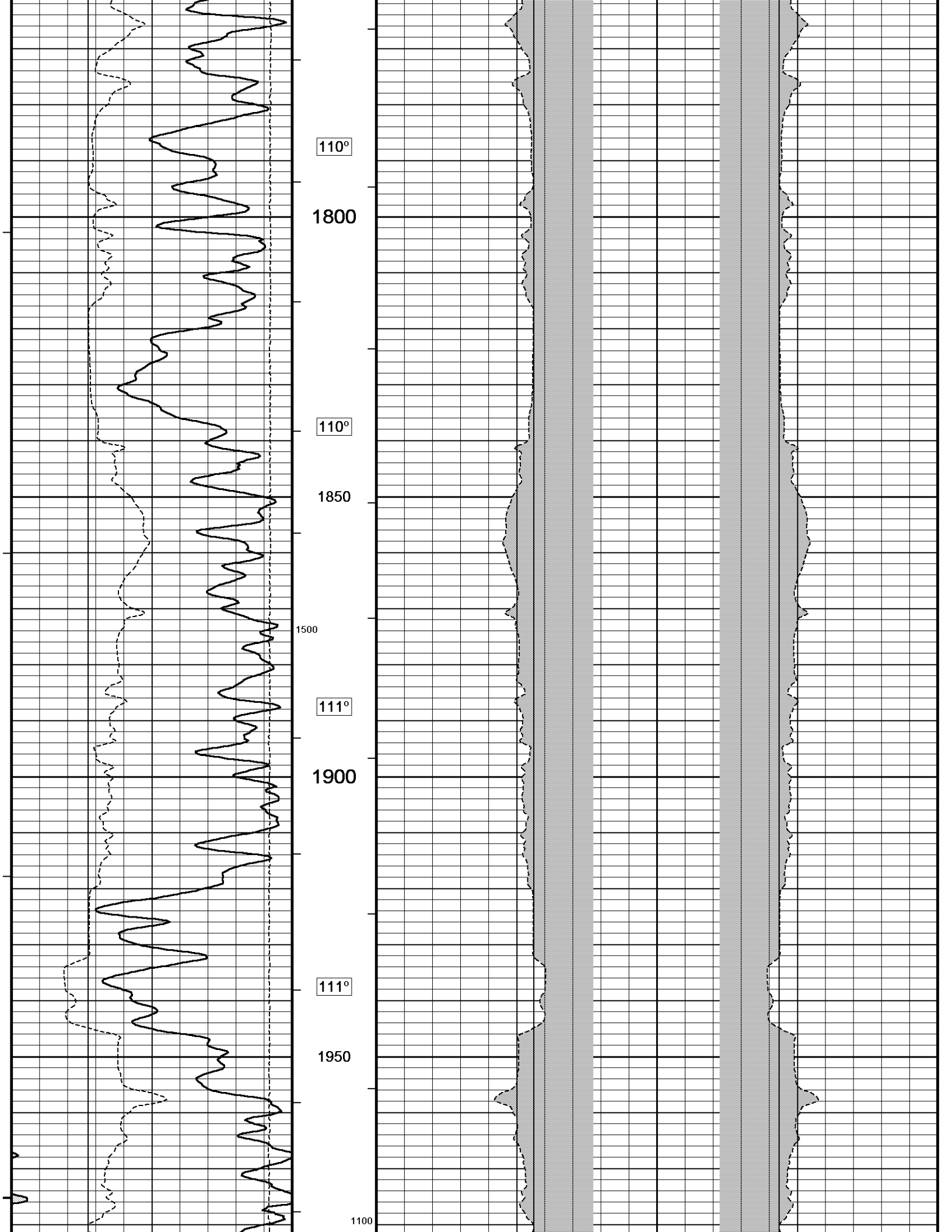


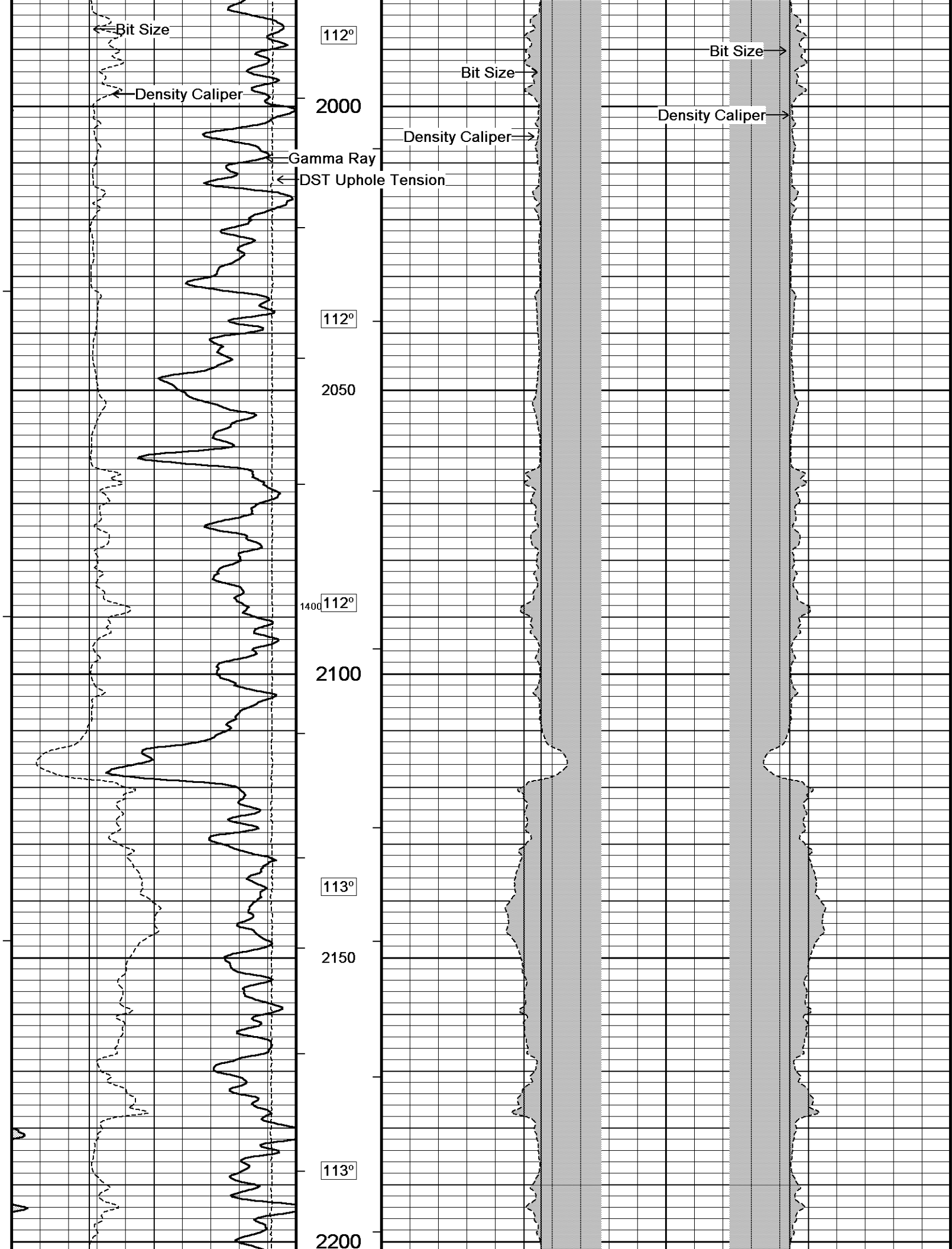


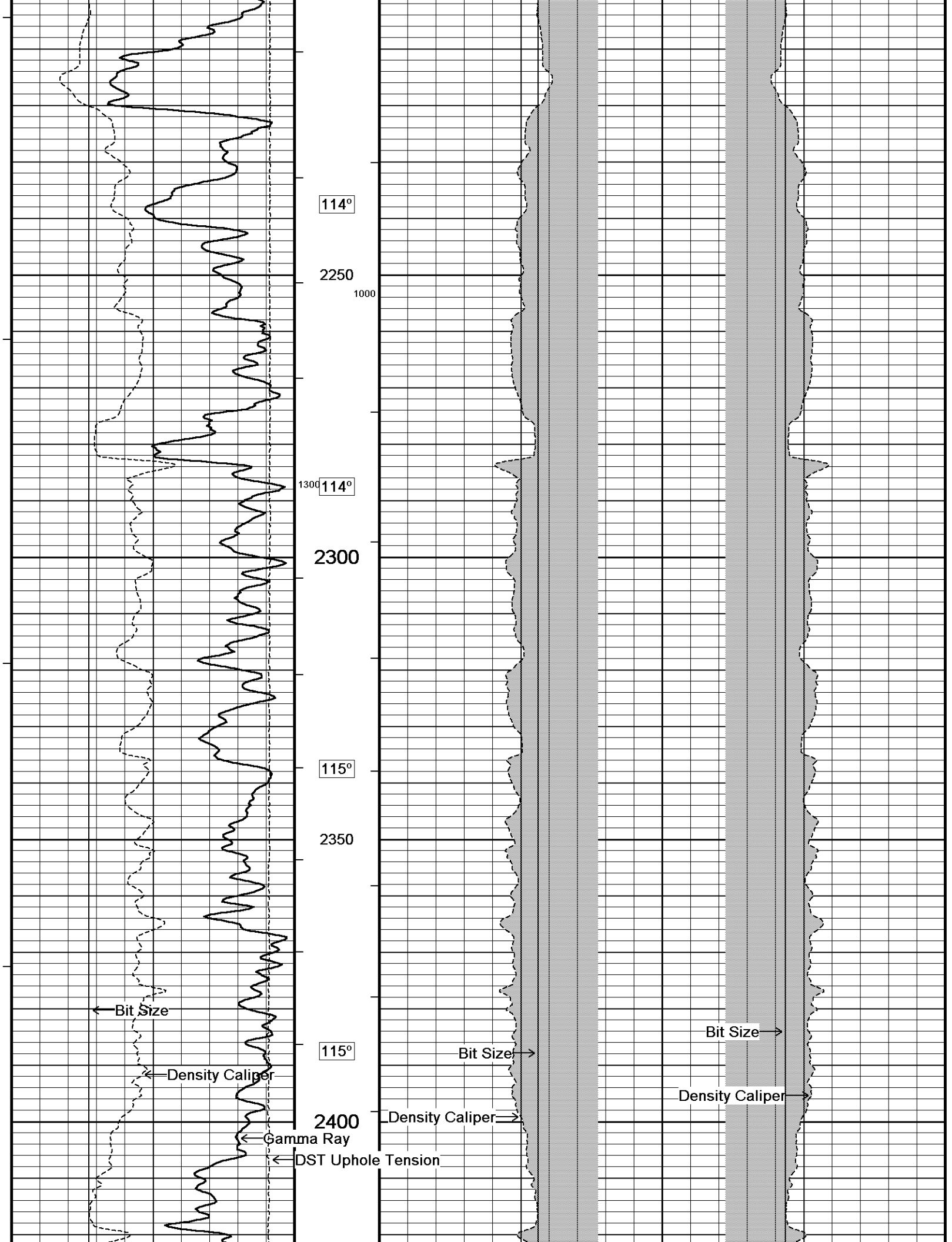


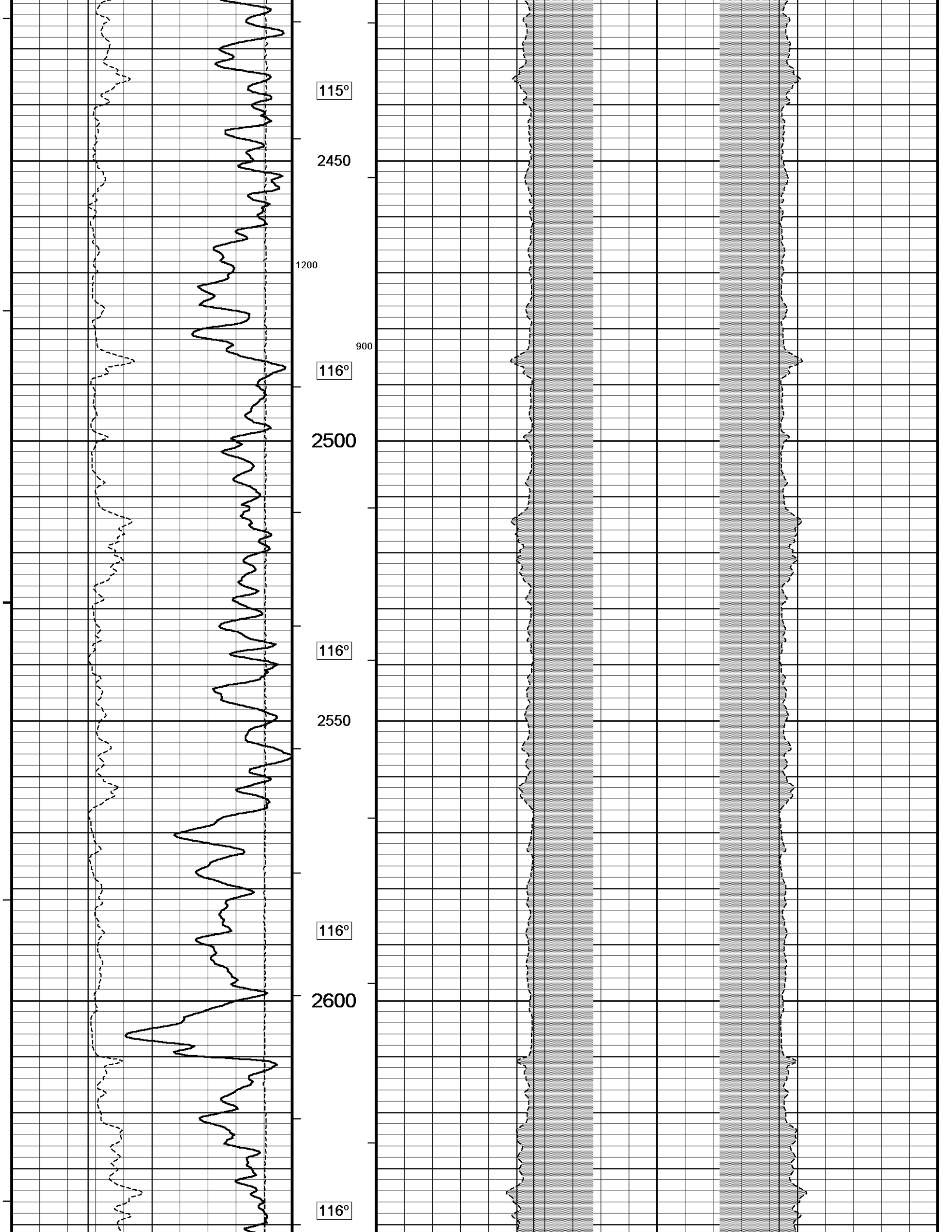


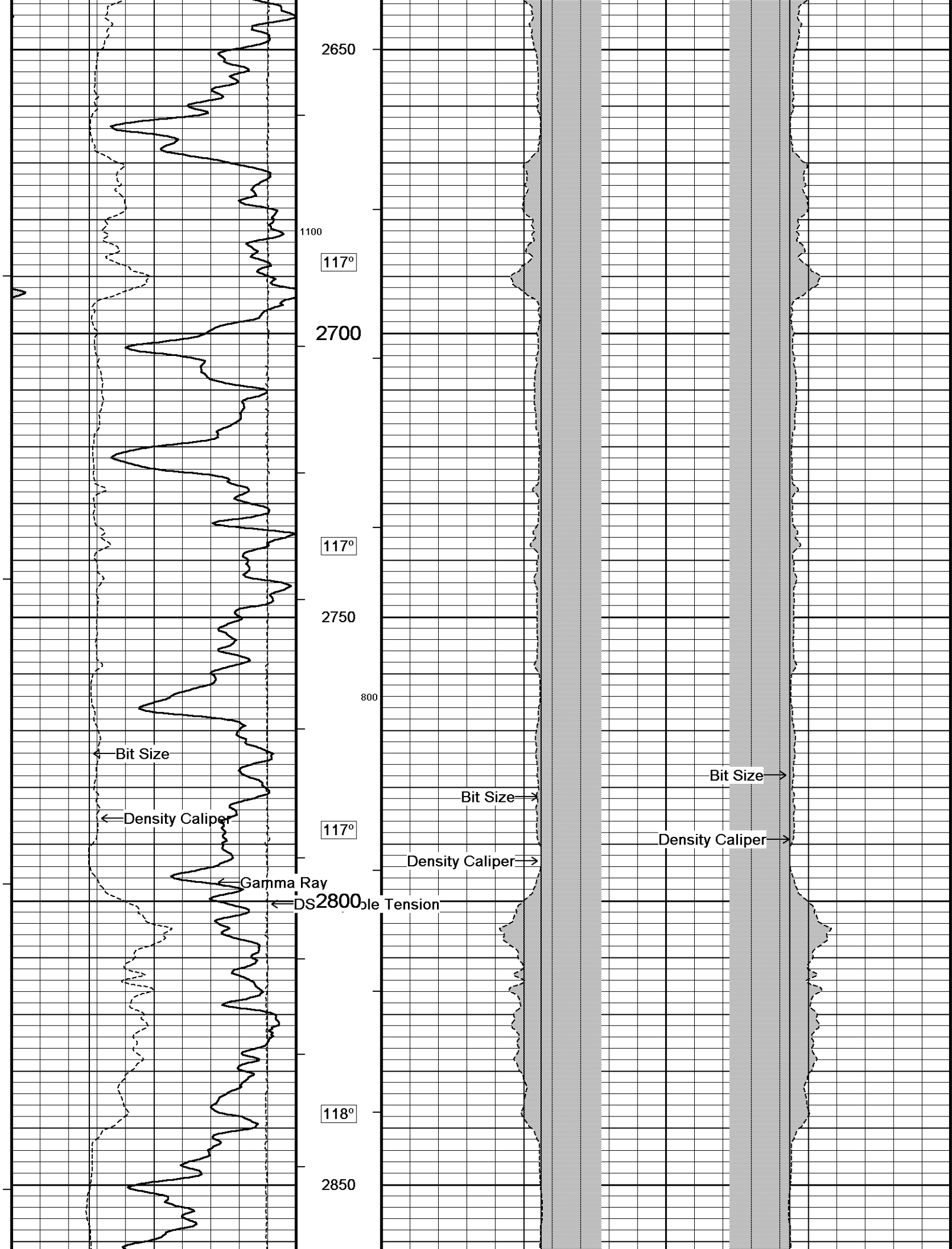


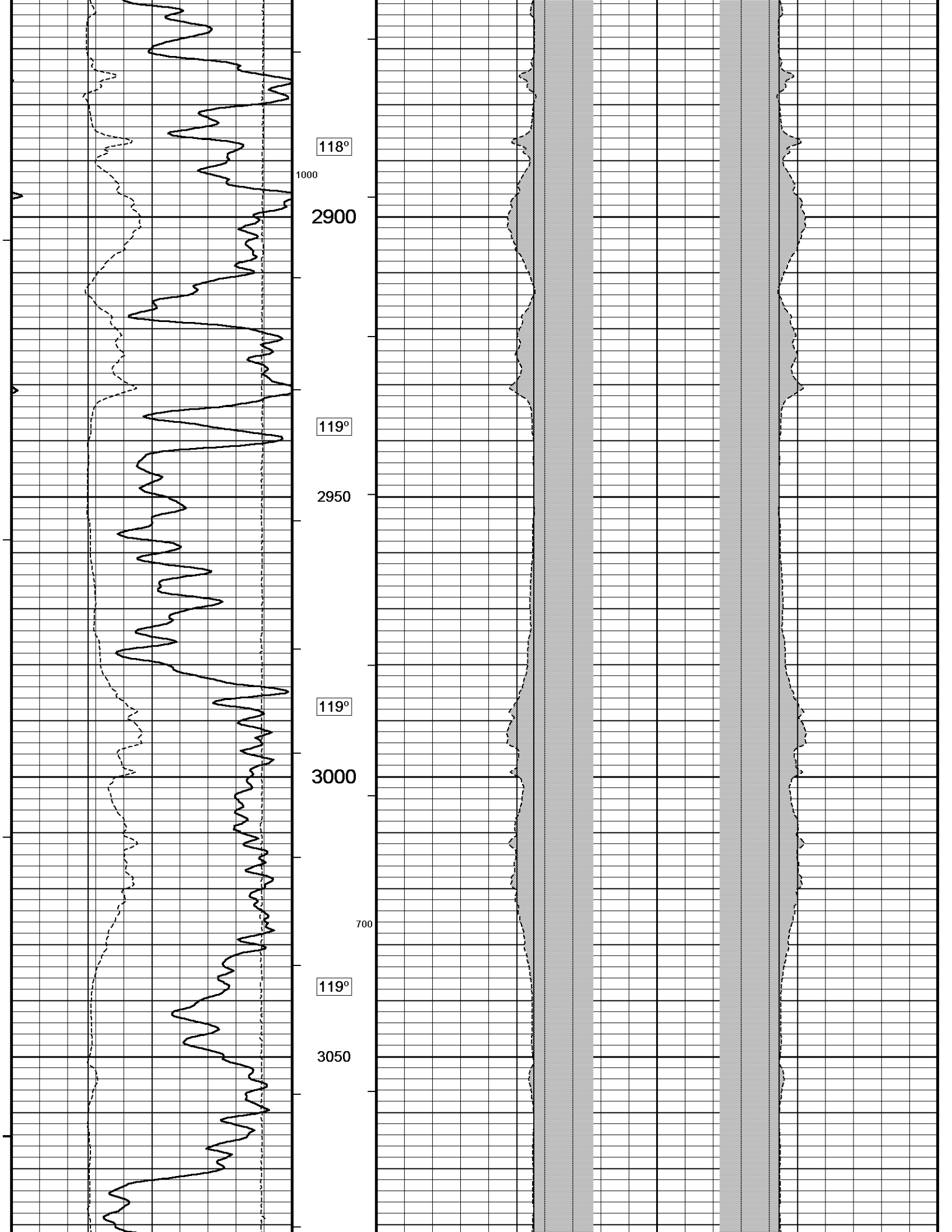


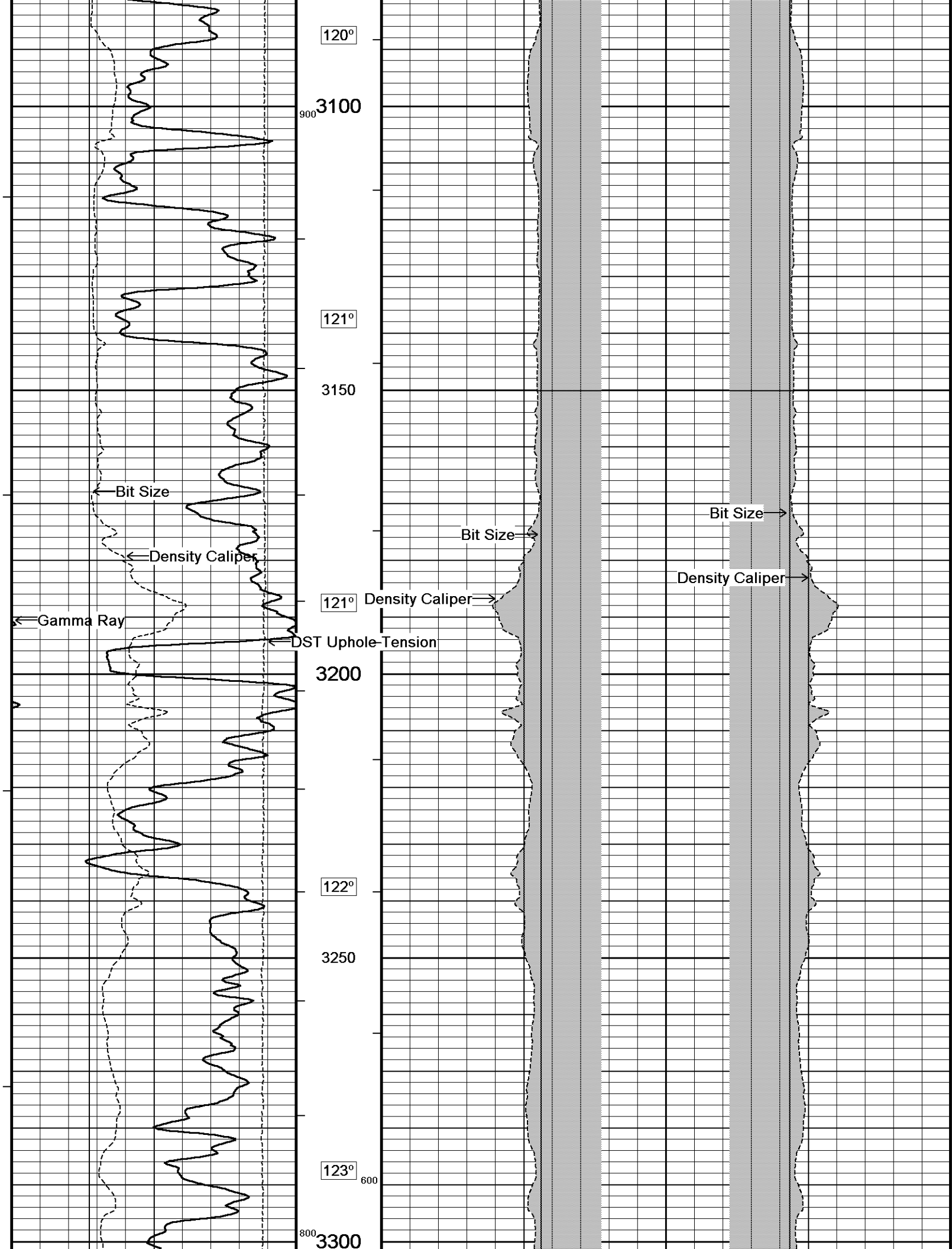


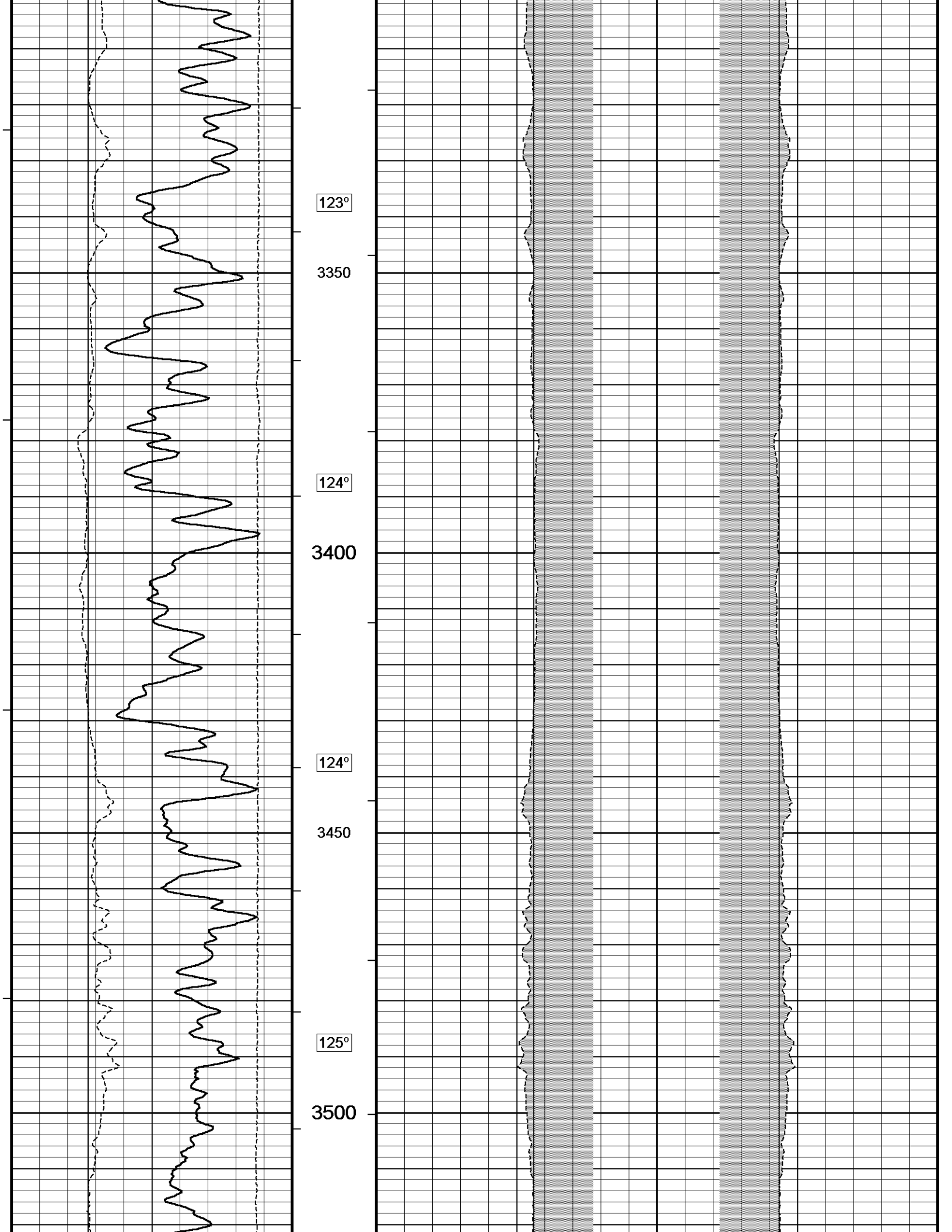


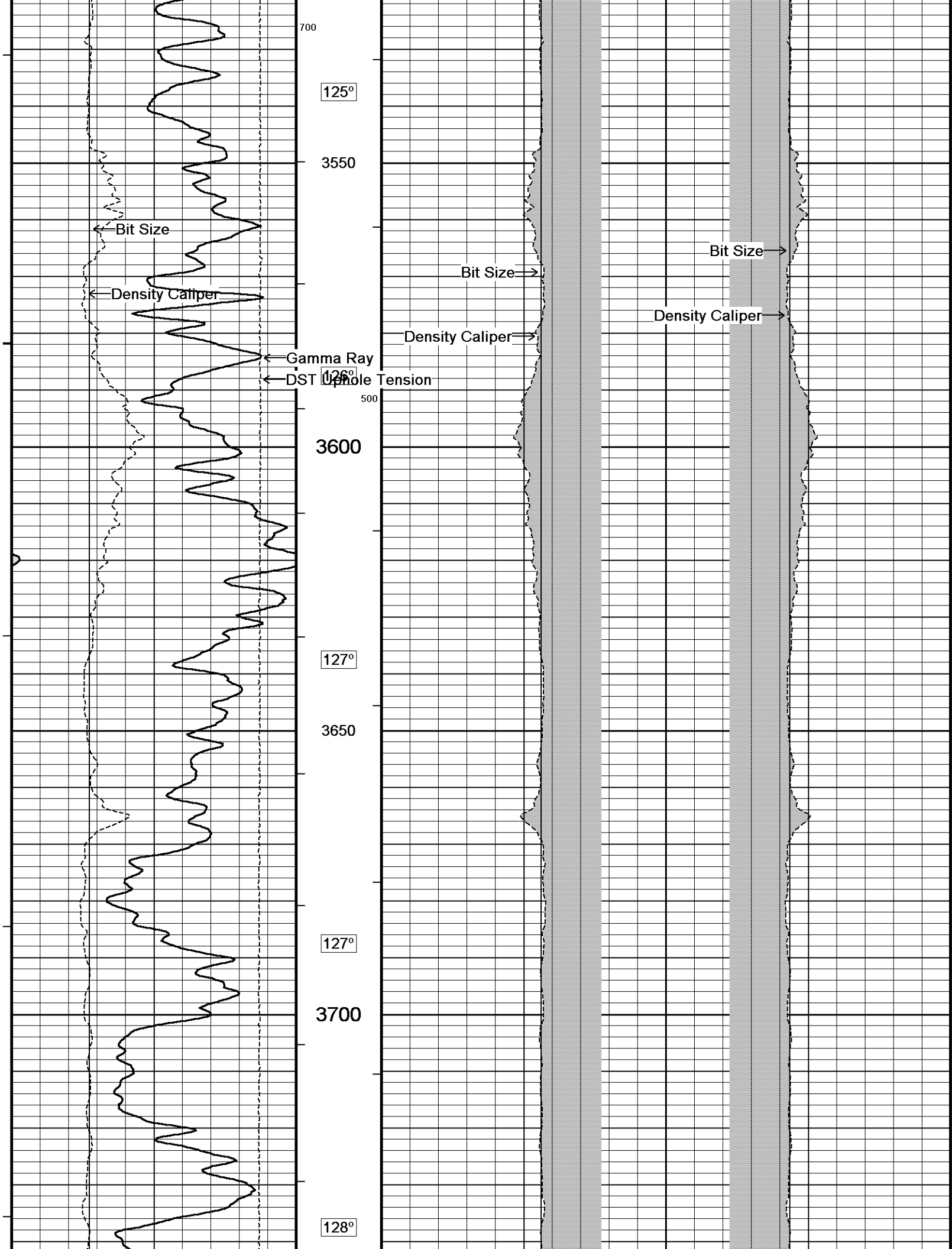


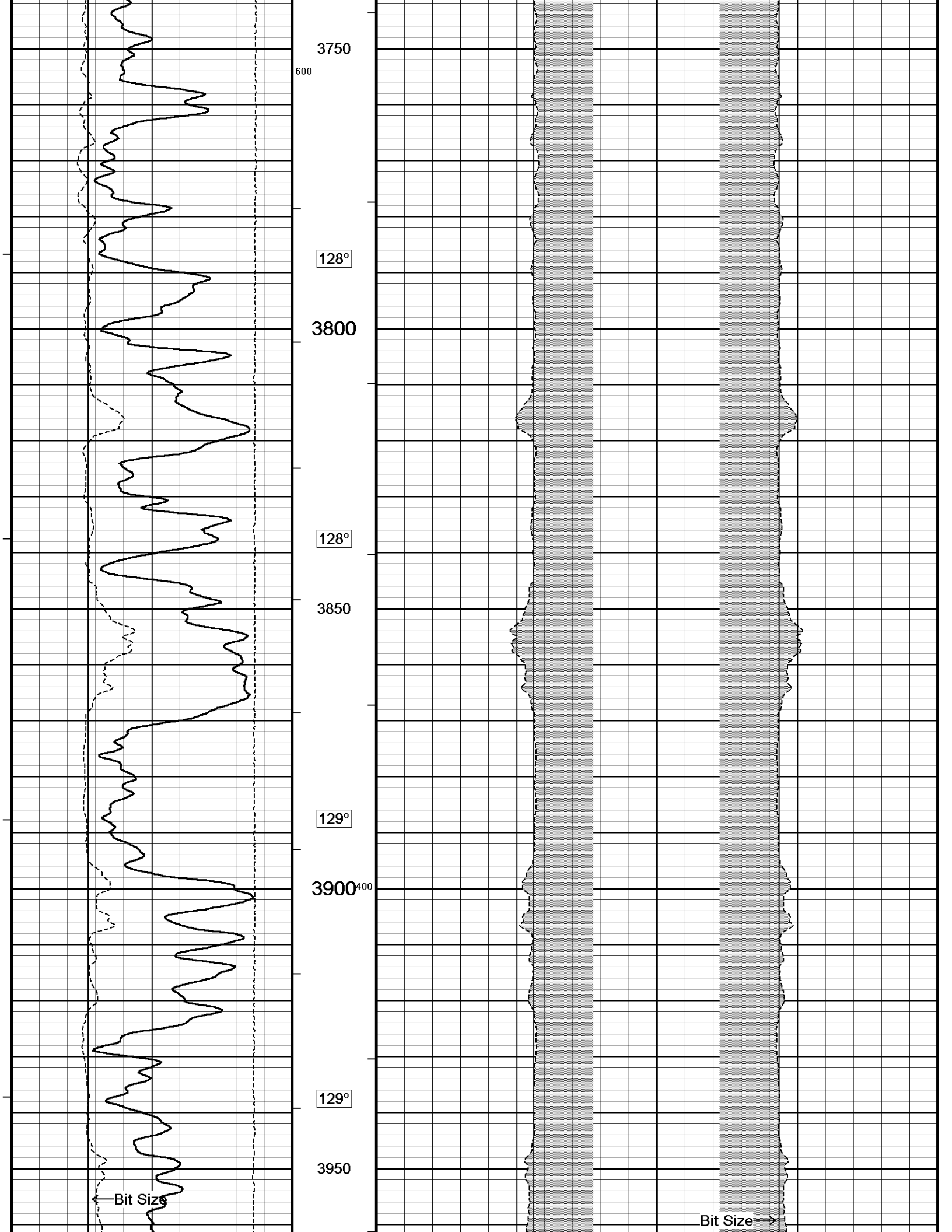


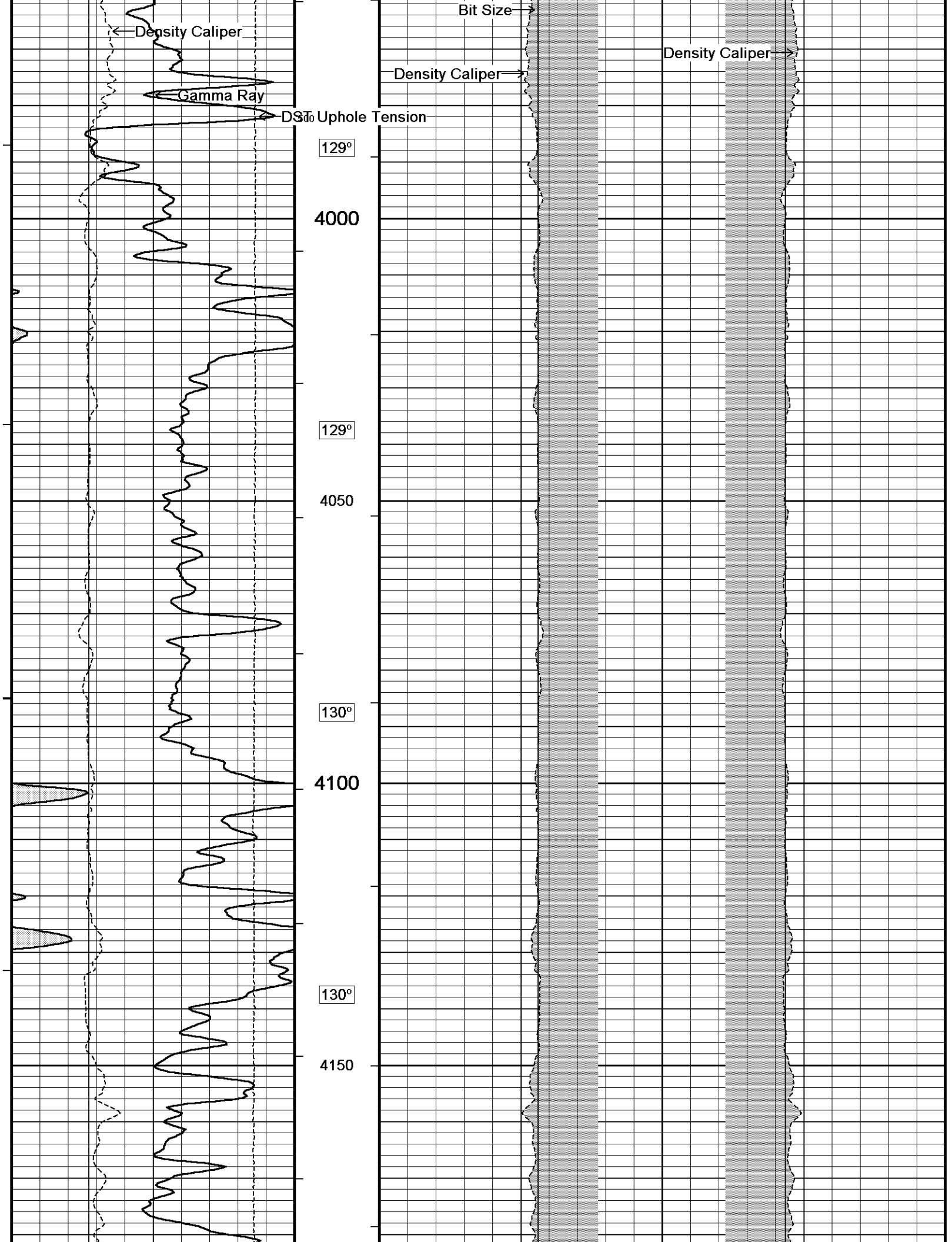


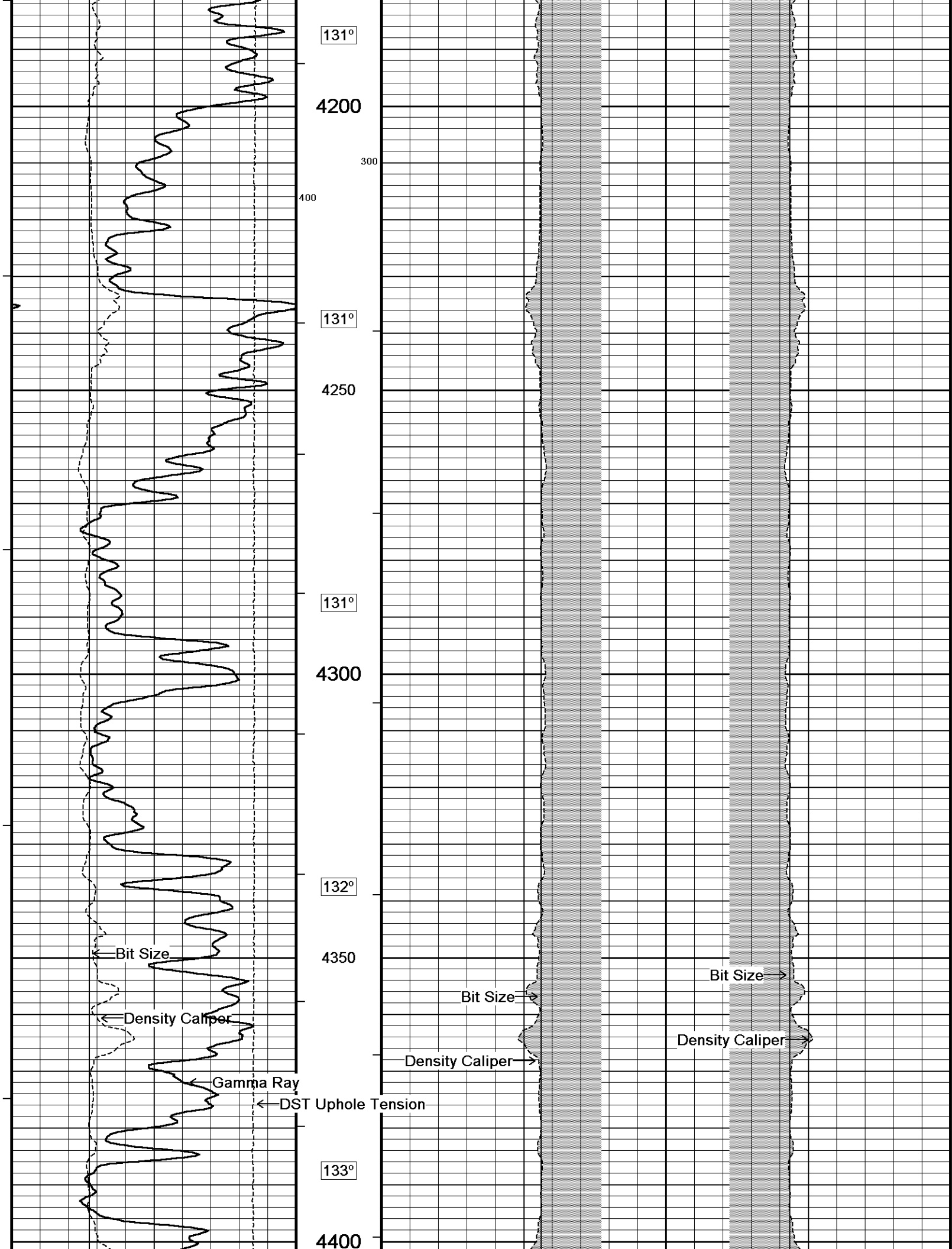


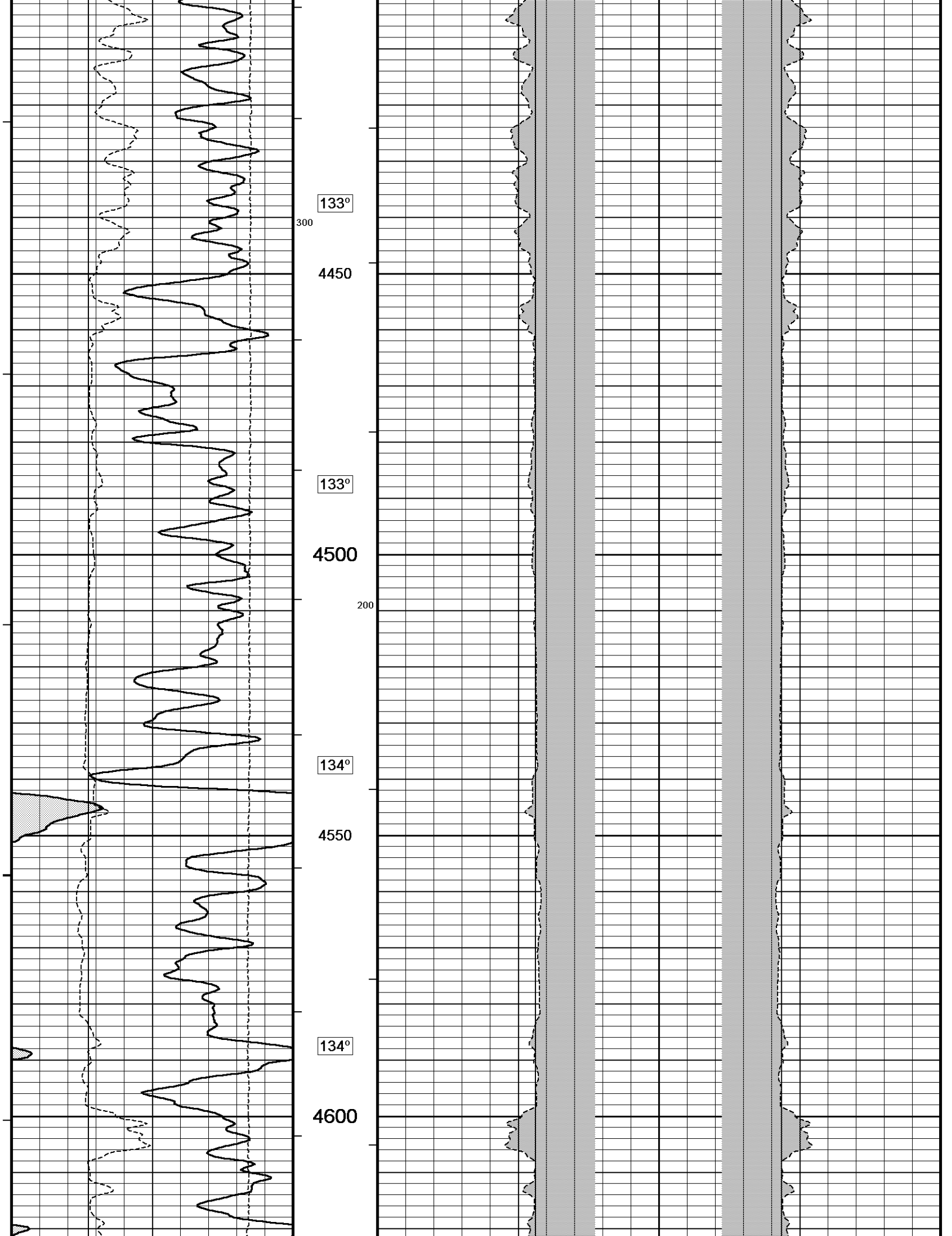


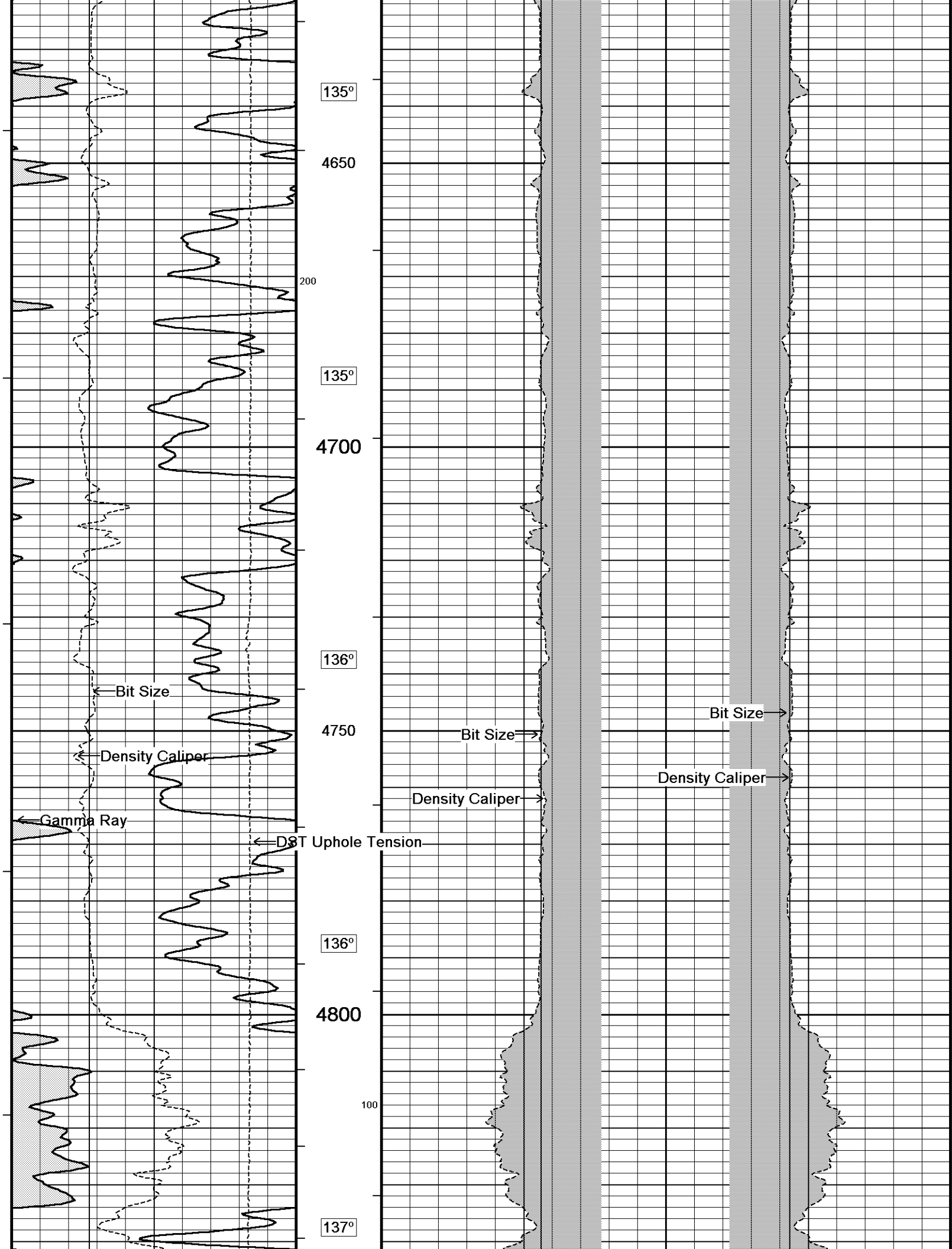


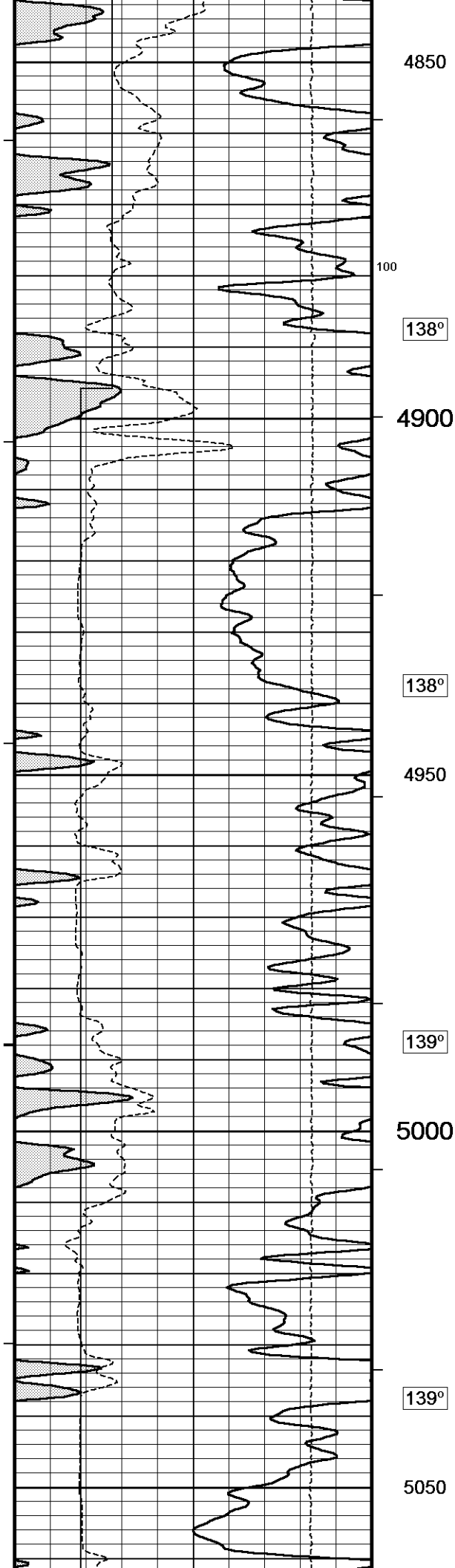












4850

100

138°

4900

138°

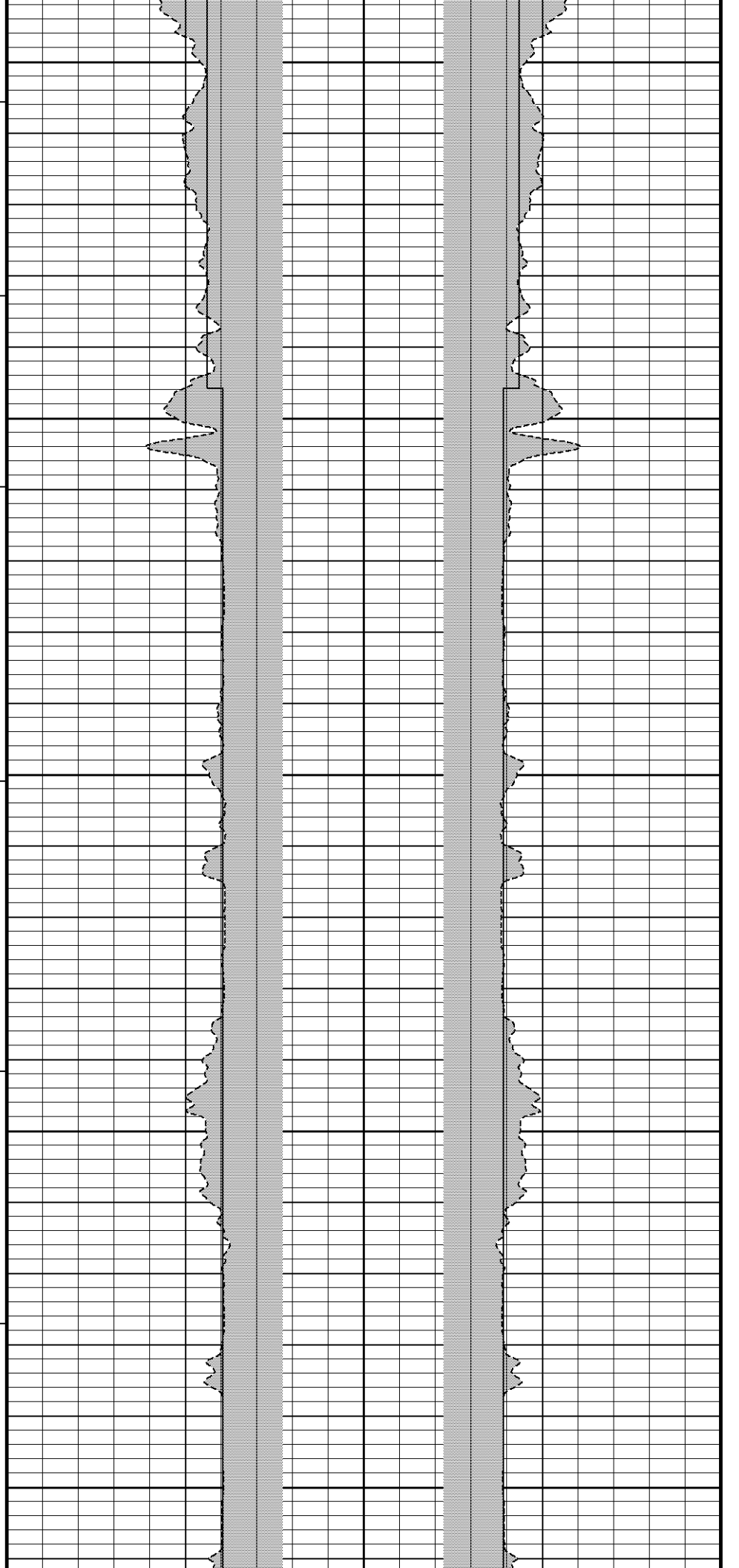
4950

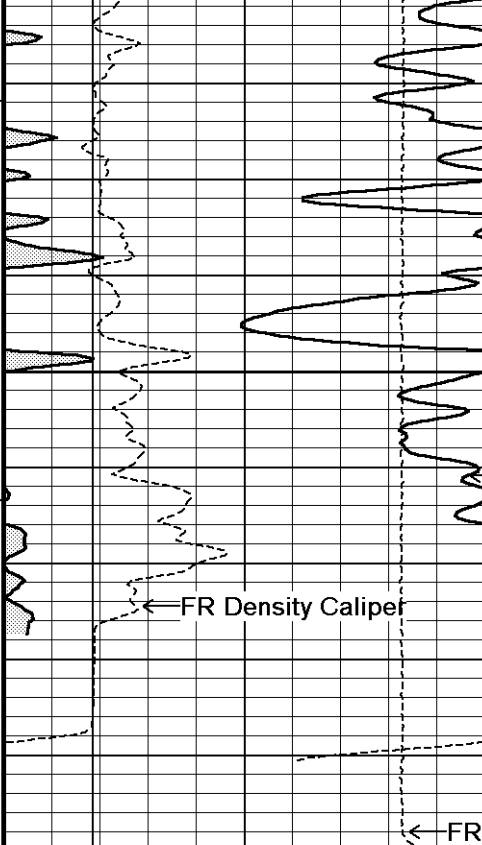
139°

5000

139°

5050





139°

5100

FR Gamma Ray

FR Density Caliper

0

FR DST Up-hole Tension

TD
5150

Depth
In
Feet

Timing Marks
every 60.0 sec

DST Uphole Tension(SMTU)

pounds

10000 5000 0

Gamma Ray(GRGC)

API

0 75 150

150 225 300

Density Caliper(CLDC)

inches

6 11 16

Bit Size(BIT)

inches

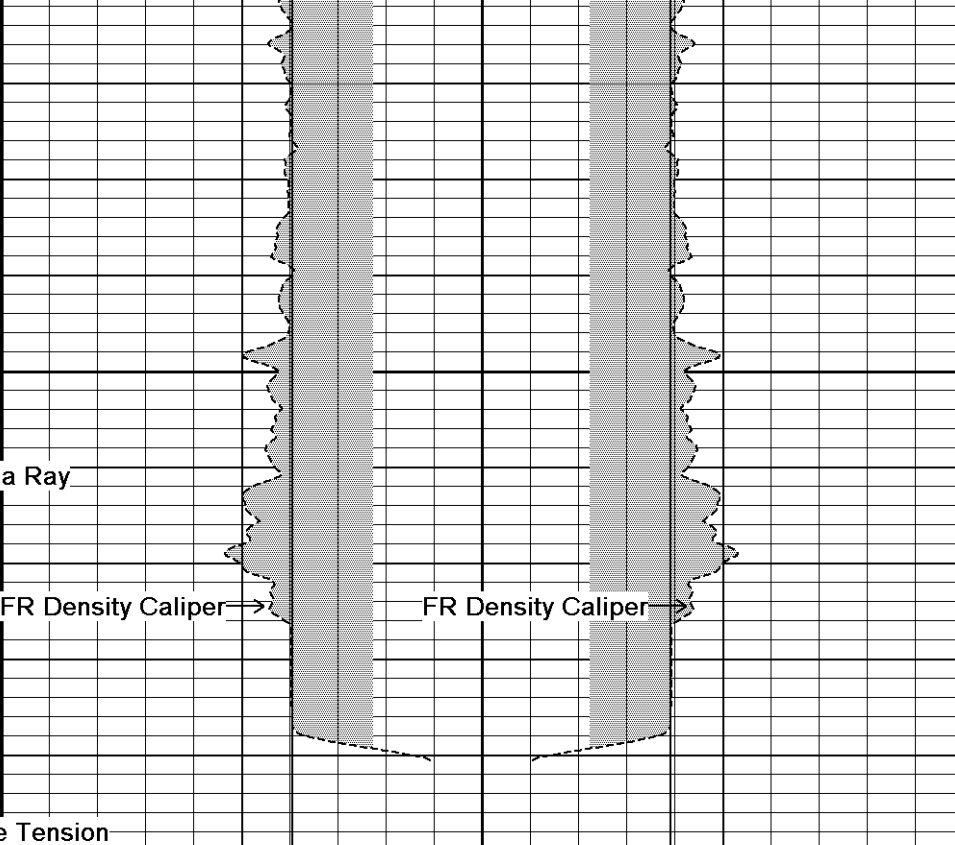
6 11 16

Borehole
Temp in
deg F

HVI
every
10 cu ft

Annular
Integral
every
10 cu ft

Replay
Scale
1:240



FR Density Caliper

FR Density Caliper

Density Caliper(CLDC)

inches

20 10 0 0 10 20

Density Caliper(CLDC)

inches

Bit Size(BIT)

inches

20 10 0 0 10 20

Bit Size(BIT)

inches

Casing Size(CASE)

inches

20 10 0 0 10 20

Casing Size(CASE)

inches



5 INCH MAIN LOG



DOWNHOLE EQUIPMENT

C:\LOGS\Bill Barrett\Jolley 42B-20-691\MAIN2.dta

3/8" Triple Cone Cable Head (MCB C A)
MCB-C.A 5 LG: 1.58 ft WT: 15.4 lb OD: 2.24 in

SHA-F Compact Swivel Head Adaptor
SHA-F 82 LG: 2.74 ft WT: 26.5 lb OD: 2.24 in

Compact Comms Gamma
MCG-D.A 287 LG: 8.70 ft WT: 63.9 lb OD: 2.24 in

Compact Neutron
MDN-A.B 160 LG: 5.04 ft WT: 50.7 lb OD: 2.24 in

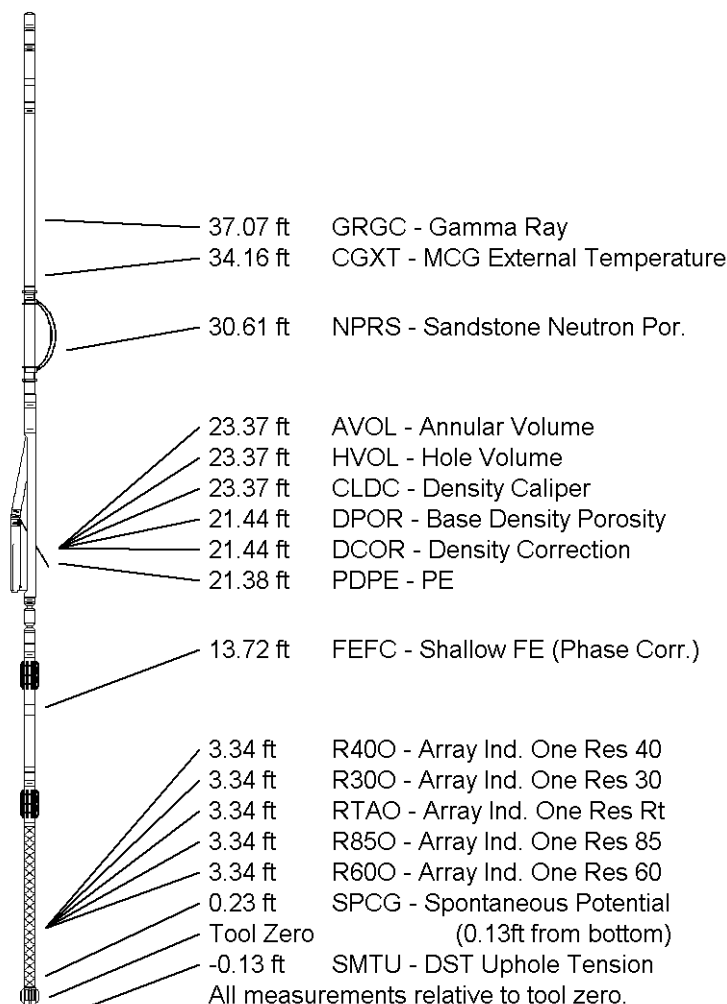
Compact Density/Caliper
MPD-B 167 LG: 9.59 ft WT: 90.4 lb OD: 2.45 in

SKJ-D.A Compact Knuckle Joint
SKJ-D.A 114 LG: 2.17 ft WT: 24.3 lb OD: 2.24 in

Compact Focussed Electric
MFE-A.A 85 LG: 6.05 ft WT: 48.5 lb OD: 2.24 in

Compact Induction
MAI-B.A 213 LG: 10.81 ft WT: 48.5 lb OD: 2.24 in

Total Length: 46.67 ft Weight: 368.2 lb



COMPANY	BILL BARRETT CORPORATION
WELL	JOLLEY 42B-20-691
FIELD	GIBSON GULCH
PROVINCE/COUNTY	GARFIELD
COUNTRY/STATE	U.S.A. / COLORADO

Elevation Kelly Bushing	6476.00	feet	First Reading	5125.00	
Elevation Drill Floor	6476.00	feet	Depth Driller	7943.00	feet
Elevation Ground Level	6453.00	feet	Depth Logger	5148.00	feet



Weatherford®

HOLE VOLUME
CALIPER LOG

