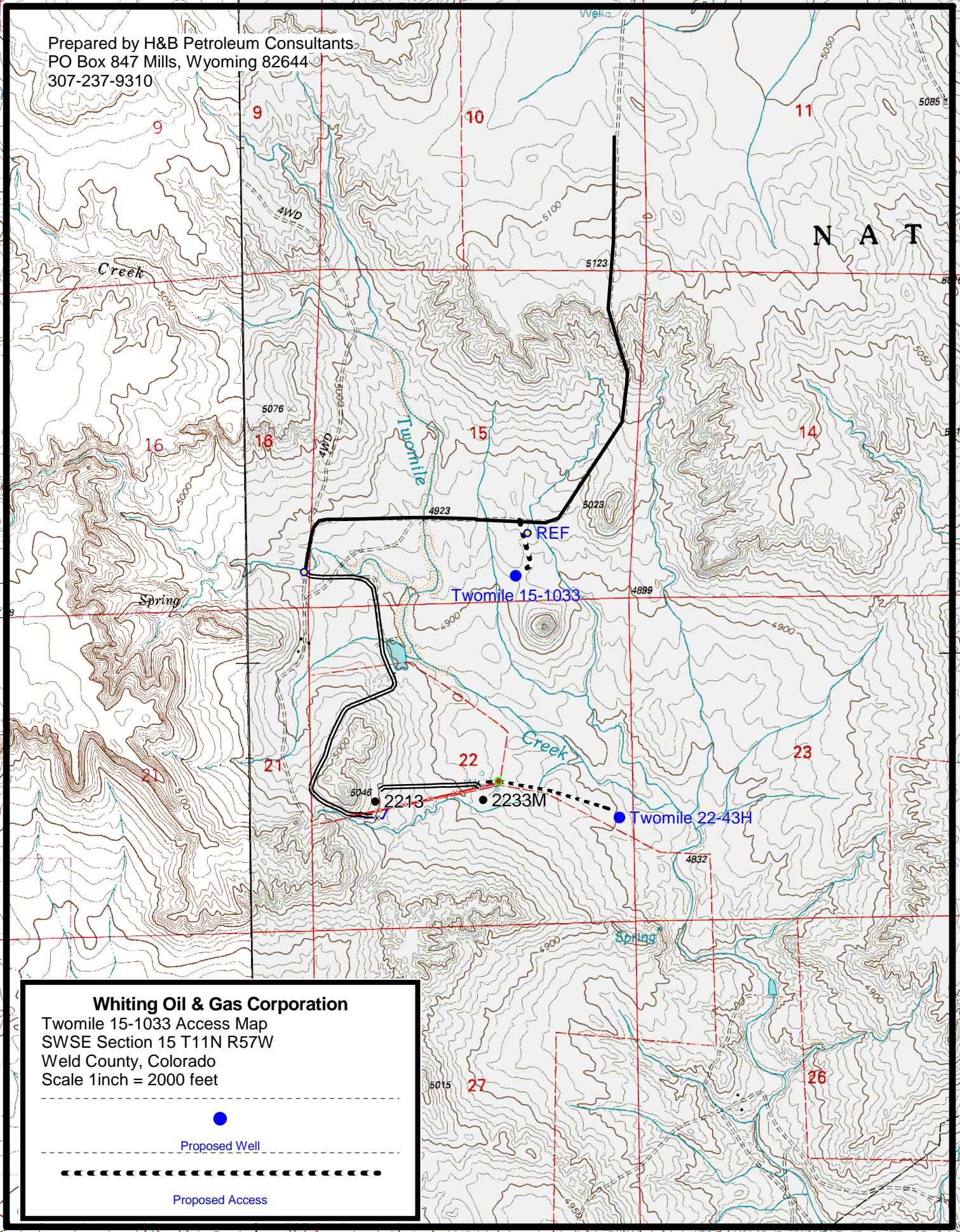


Prepared by H&B Petroleum Consultants  
PO Box 847 Mills, Wyoming 82644  
307-237-9310



### Whiting Oil & Gas Corporation

Twomile 15-1033 Access Map  
SWSE Section 15 T11N R57W  
Weld County, Colorado  
Scale 1 inch = 2000 feet

Proposed Well

Proposed Access