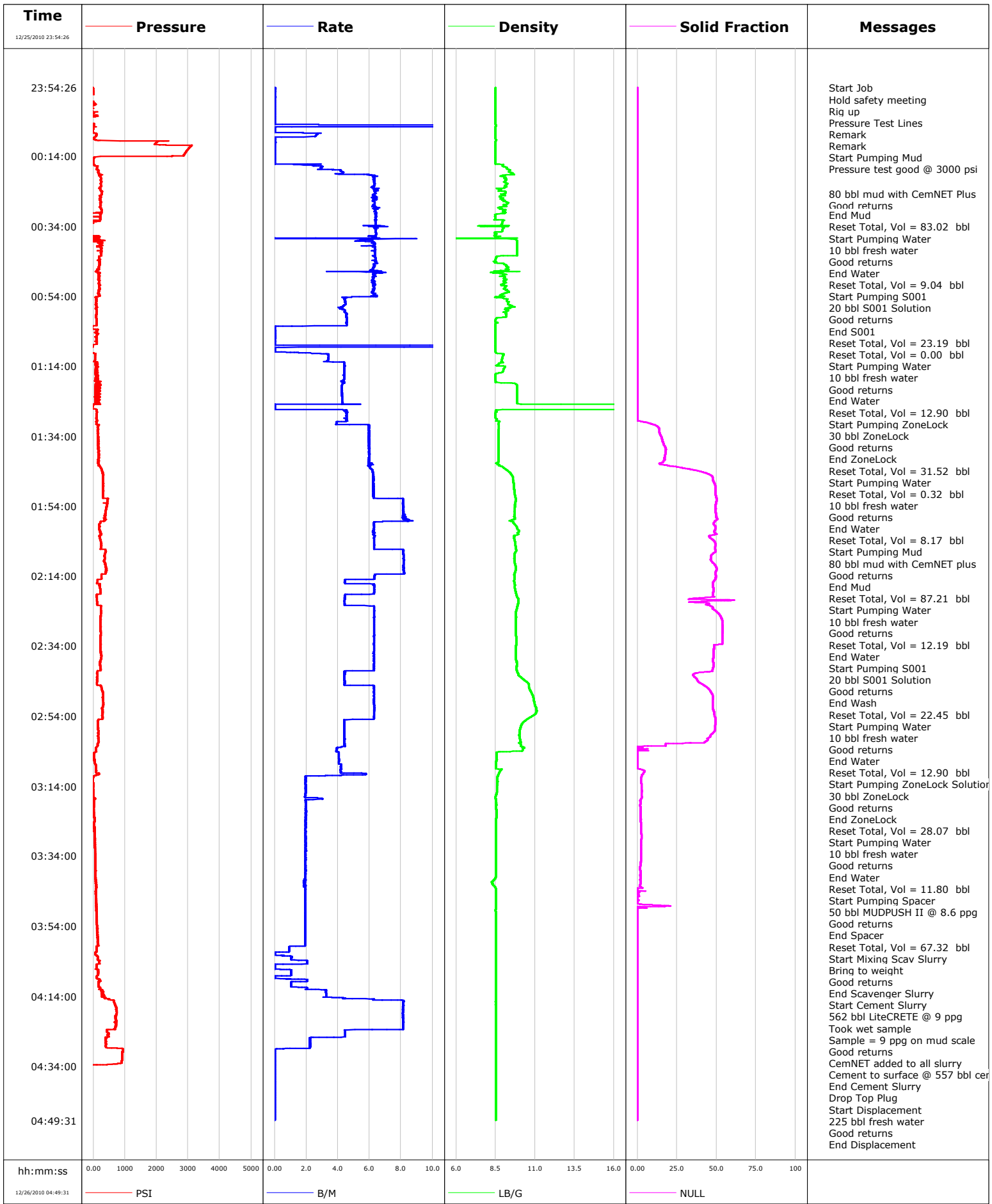


<b>Well</b>	SGU 8504B-25 F25 496	<b>Client</b>	Encana
<b>Field</b>	Story Gulch	<b>SIR No.</b>	BJ90-00138
<b>Engineer</b>	Dave Wanczyk	<b>Job Type</b>	9 5/8" Surface Casing
<b>Country</b>	United States	<b>Job Date</b>	12-25-2010



				Customer				Job Number			
				Encana				BJ90-00138			
Well			Location (legal)				Schlumberger Location			Job Start	
SGU 8504B-25 F25 496							Grand Junction, CO			Dec/25/2010	
Field		Formation Name/Type			Deviation		Bit Size		Well MD		Well TVD
Story Gulch		Shale			deg		14.8 in		2997.0 ft		2997.0 ft
County		State/Province			BHP		BHST		BHCT		Pore Press. Gradient
Garfield		Colorado			psi		115 degF		95 degF		lb/gal
Well Master		API/UWI									
0631238393											
Rig Name		Drilled For		Service Via		Casing/Liner					
Patterson 306		Gas		Land							
						Depth, ft	Size, in	Weight, lb/ft	Grade	Thread	
Offshore Zone		Well Class		Well Type		120.0	20.0	94.0	J55	8RD	
		New		Development		2997.0	9.6	36.0	J55	8RD	
Drilling Fluid Type		Max. Density		Plastic Viscosity		Tubing/Drill Pipe					
Bentonite		9.20 lb/gal		15.000 cP							
						T/D	Depth, ft	Size, in	Weight, lb/ft	Grade	Thread
Service Line		Job Type									
Cementing		9 5/8" Surface Casing									
Max. Allowed Tub. Press		Max. Allowed Ann. Press		WH Connection		Perforations/Open Hole					
3520 psi		2030 psi		Single Cement head							
						Top, ft	Bottom, ft	shot/ft	No. of Shots	Total Interval	
Service Instructions						ft	ft			ft	
Cement 9 5/8" Surface casing with:						ft	ft			Diameter	
80 bbls CemNET Plus (in Mud)						ft	ft			in	
ZONELOCK SC (20 bbls S001, 30 bbls D075)											
80 bbls CemNET Plus (in Mud)											
ZONELOCK SC (20 bbls S001, 30 bbls D075)□											
50 bbls MUDPUSH II w/CemNET Plus											
1127sks 9.0# LiteCRETE (w/ CemNET) (50% Excess)											
Drop Top Plug "On-the-Fly"											
Displace with 10 bbls H2O + D182 followed by H2O											
Treat Down		Displacement		Packer Type		Packer Depth					
Casing		228.1 bbl				ft					
Tubing Vol.		Casing Vol.		Annular Vol.		Openhole Vol.					
bbl		231.7 bbl		381.0 bbl		673.0 bbl					
Casing/Tubing Secured		1 Hole Vol. Circulated prior to Cement		Casing Tools				Squeeze Job			
<input checked="" type="checkbox"/>		<input checked="" type="checkbox"/>									
Lift Pressure		1483 psi			Shoe Type		Guide		Squeeze Type		
Pipe Rotated		<input type="checkbox"/>			Shoe Depth		2997.0 ft		Tool Type		
Pipe Reciprocated		<input type="checkbox"/>									
No. Centralizers		Top Plugs		Bottom Plugs		Stage Tool Type		Tool Depth			
		0		1				ft			
Cement Head Type		Single			Stage Tool Depth		ft		Tail Pipe Size		
									in		
Job Scheduled For		Arrived on Location		Leave Location		Collar Type		Diff-Fill		Tail Pipe Depth	
Dec/25/2010		Dec/25/2010		Dec/25/2010		Collar Depth		2950.0 ft		Sqz. Total Vol.	
										bbl	
Date	Time 24-hr clock	Treating Pressure PSI	Flow Rate B/M	Density LB/G	Solid Fraction NULL	Volume BBL	Message				
12/25/2010	23:54:26	-1	0.0	8.50	0	0.0	Started Acquisition				
12/25/2010	23:54:29	-1	0.0	8.50	0	0.0	Start Job				
12/25/2010	23:54:31	-1	0.0	8.50	0	0.0	Hold safety meeting				
12/25/2010	23:54:32	0	0.0	8.50	0	0.0	Rig up				
12/25/2010	23:54:33	-1	0.0	8.50	0	0.0	Pressure Test Lines				
12/25/2010	23:54:35	-0	0.0	8.50	0	0.0	Remark				
12/25/2010	23:54:41	-0	0.0	8.51	0	0.0	Remark				
12/25/2010	23:54:44	0	0.0	8.50	0	0.0	Start Pumping Mud				
12/25/2010	23:56:06	-270	0.0	8.50	0	0.0					
12/25/2010	23:57:46	-3746	0.0	8.50	0	0.1					
12/25/2010	23:59:26	49	0.0	8.50	0	0.1					
12/26/2010	00:01:06	-884	0.0	8.50	0	0.2					
12/26/2010	00:02:46	-499	0.0	8.50	0	0.2					
12/26/2010	00:04:26	-435	0.0	8.50	0	0.2					
12/26/2010	00:06:06	2	0.0	8.49	0	8.2					
12/26/2010	00:07:46	108	2.7	8.49	0	9.3					
12/26/2010	00:09:26	94	0.0	8.53	0	11.4					
12/26/2010	00:11:06	3099	0.0	8.49	0	11.4					
12/26/2010	00:12:46	2932	0.0	8.49	0	11.5					
12/26/2010	00:14:26	34	0.0	8.49	0	11.5					
12/26/2010	00:16:00	7	0.0	8.49	0	11.5	Pressure test good @ 3000 psi				

Well			Field		Job Start	Customer	Job Number
SGU 8504B-25 F25 496			Story Gulch		Dec/25/2010	Encana	BJ90-00138
Date	Time 24-hr clock	Treating Pressure PSI	Flow Rate B/M	Density LB/G	Solid Fraction NULL	Volume BBL	Message
12/26/2010	00:17:46	120	2.9	9.27	0	15.2	
12/26/2010	00:19:26	256	5.9	9.20	0	22.4	
12/26/2010	00:21:06	233	6.3	9.13	0	32.9	
12/26/2010	00:22:46	253	6.2	9.15	0	43.4	
12/26/2010	00:24:26	271	6.4	9.13	0	53.9	
12/26/2010	00:24:43	263	6.4	9.10	0	55.7	80 bbl mud with CemNET Plus
12/26/2010	00:24:45	265	6.4	9.09	0	56.0	Good returns
12/26/2010	00:26:06	218	6.4	8.91	0	64.5	
12/26/2010	00:27:46	227	6.3	9.23	0	75.0	
12/26/2010	00:29:26	262	6.4	9.12	0	85.5	
12/26/2010	00:30:50	226	6.4	8.50	0	94.4	End Mud
12/26/2010	00:30:51	220	6.4	8.50	0	94.5	Reset Total, Vol = 83.02 bbl
12/26/2010	00:30:53	223	6.4	8.50	0	94.8	Start Pumping Water
12/26/2010	00:30:55	220	6.4	8.50	0	95.0	10 bbl fresh water
12/26/2010	00:31:06	218	6.4	8.49	0	96.1	
12/26/2010	00:32:15	219	6.4	8.59	0	103.5	End Water
12/26/2010	00:32:16	213	6.4	8.71	0	103.6	Reset Total, Vol = 9.04 bbl
12/26/2010	00:32:24	99	6.4	9.03	0	104.4	Start Pumping S001
12/26/2010	00:32:26	45	6.4	9.02	0	104.7	20 bbl S001 Solution
12/26/2010	00:32:46	-213	6.4	8.94	0	106.8	
12/26/2010	00:34:26	-3618	6.3	8.95	0	117.4	
12/26/2010	00:35:52	-3746	6.4	8.44	0	126.6	End S001
12/26/2010	00:35:54	-3746	6.4	8.44	0	126.8	Reset Total, Vol = 23.19 bbl
12/26/2010	00:35:56	-3746	6.4	8.44	0	127.0	Start Pumping Water
12/26/2010	00:35:58	-3746	6.4	8.45	0	127.2	10 bbl fresh water
12/26/2010	00:36:06	-3746	6.4	8.45	0	128.1	
12/26/2010	00:37:46	82	5.6	9.69	0	138.1	
12/26/2010	00:38:01	-734	6.0	9.83	0	139.6	End Water
12/26/2010	00:38:02	-917	5.4	9.83	0	139.7	Reset Total, Vol = 12.90 bbl
12/26/2010	00:38:05	-627	5.5	9.84	0	140.0	Start Pumping ZoneLock
12/26/2010	00:38:06	307	5.5	9.84	0	140.0	30 bbl ZoneLock
12/26/2010	00:38:07	43	5.5	9.84	0	140.1	Good returns
12/26/2010	00:39:26	241	6.3	9.87	0	148.1	
12/26/2010	00:41:06	126	6.3	9.87	0	158.6	
12/26/2010	00:42:46	184	6.3	8.57	0	169.2	
12/26/2010	00:43:01	178	6.4	8.53	0	170.8	End ZoneLock
12/26/2010	00:43:05	183	6.4	8.53	0	171.2	Reset Total, Vol = 31.52 bbl
12/26/2010	00:43:07	177	6.4	8.52	0	171.4	Start Pumping Water
12/26/2010	00:43:08	180	6.4	8.52	0	171.5	Reset Total, Vol = 0.32 bbl
12/26/2010	00:43:10	178	6.4	8.52	0	171.7	10 bbl fresh water
12/26/2010	00:43:11	178	6.4	8.52	0	171.8	Good returns
12/26/2010	00:44:23	204	6.4	8.47	0	179.5	End Water
12/26/2010	00:44:25	215	6.4	8.47	0	179.7	Reset Total, Vol = 8.17 bbl
12/26/2010	00:44:26	201	6.4	8.47	0	179.8	
12/26/2010	00:44:28	202	6.4	8.47	0	180.0	Start Pumping Mud
12/26/2010	00:44:31	207	6.4	8.47	0	180.3	80 bbl mud with CemNET plus
12/26/2010	00:46:06	177	6.2	9.24	0	190.3	
12/26/2010	00:47:46	173	6.3	9.01	0	200.7	
12/26/2010	00:49:26	177	6.2	9.17	0	211.1	
12/26/2010	00:51:06	187	6.2	9.12	0	221.5	
12/26/2010	00:52:46	170	6.2	9.34	0	232.0	
12/26/2010	00:54:26	68	4.5	8.58	0	242.2	
12/26/2010	00:56:06	87	4.5	9.29	0	249.6	
12/26/2010	00:57:46	89	4.4	9.20	0	256.8	

Well			Field		Job Start		Customer	Job Number
SGU 8504B-25 F25 496			Story Gulch		Dec/25/2010		Encana	BJ90-00138
Date	Time 24-hr clock	Treating Pressure PSI	Flow Rate B/M	Density LB/G	Solid Fraction NULL	Volume BBL	Message	
12/26/2010	00:59:57	90	4.5	9.16	0	266.6	End Mud	
12/26/2010	01:00:01	85	4.5	9.13	0	266.9	Reset Total, Vol = 87.21 bbl	
12/26/2010	01:00:04	82	4.5	9.00	0	267.1	Start Pumping Water	
12/26/2010	01:00:06	82	4.5	8.96	0	267.3	10 bbl fresh water	
12/26/2010	01:00:07	82	4.5	8.91	0	267.3	Good returns	
12/26/2010	01:01:06	95	4.5	8.50	0	271.8		
12/26/2010	01:02:46	-30	0.0	8.49	0	278.7		
12/26/2010	01:04:26	67	0.0	8.49	0	278.8		
12/26/2010	01:06:06	110	0.0	8.49	0	278.8		
12/26/2010	01:07:46	107	0.0	8.49	0	278.8		
12/26/2010	01:08:05	-24	8.5	8.51	0	279.1	Reset Total, Vol = 12.19 bbl	
12/26/2010	01:08:09	-18	10.4	8.49	0	279.7	End Water	
12/26/2010	01:09:26	-58	0.0	8.49	0	285.1		
12/26/2010	01:10:18	3	2.0	8.53	0	285.5	Start Pumping S001	
12/26/2010	01:11:06	58	3.4	8.97	0	288.0		
12/26/2010	01:12:46	45	3.3	8.87	0	293.6		
12/26/2010	01:14:26	124	4.4	9.06	0	300.8		
12/26/2010	01:14:40	82	4.4	9.04	0	301.9	20 bbl S001 Solution	
12/26/2010	01:14:41	137	4.4	9.03	0	301.9	Good returns	
12/26/2010	01:15:56	142	4.4	8.82	0	307.4	End Wash	
12/26/2010	01:15:57	61	4.4	8.79	0	307.5	Reset Total, Vol = 22.45 bbl	
12/26/2010	01:15:59	146	4.4	8.76	0	307.7	Start Pumping Water	
12/26/2010	01:16:01	60	4.4	8.72	0	307.8	10 bbl fresh water	
12/26/2010	01:16:06	139	4.4	8.61	0	308.2		
12/26/2010	01:17:46	75	4.4	8.49	0	315.5		
12/26/2010	01:18:52	112	4.4	9.45	0	320.3	End Water	
12/26/2010	01:18:54	160	4.4	9.52	0	320.4	Reset Total, Vol = 12.90 bbl	
12/26/2010	01:18:55	160	4.4	9.56	0	320.5	Start Pumping ZoneLock Solution	
12/26/2010	01:18:57	92	4.4	9.63	0	320.6	30 bbl ZoneLock	
12/26/2010	01:19:26	64	4.3	9.84	0	322.7		
12/26/2010	01:21:06	90	4.2	9.88	0	329.8		
12/26/2010	01:22:46	200	4.3	9.88	0	336.9		
12/26/2010	01:24:26	55	4.3	9.88	0	344.0		
12/26/2010	01:26:06	-39	0.0	25.00	0	346.1		
12/26/2010	01:26:58	98	4.5	8.50	0	348.3	End ZoneLock	
12/26/2010	01:27:00	100	4.6	8.54	0	348.5	Reset Total, Vol = 28.07 bbl	
12/26/2010	01:27:02	96	4.5	8.56	0	348.7	Start Pumping Water	
12/26/2010	01:27:04	115	4.5	8.56	0	348.8	10 bbl fresh water	
12/26/2010	01:27:46	98	4.5	8.49	0	352.0		
12/26/2010	01:29:26	123	4.5	8.58	0	359.5		
12/26/2010	01:29:34	126	4.5	8.57	0	360.1	End Water	
12/26/2010	01:29:36	124	4.5	8.57	0	360.3	Reset Total, Vol = 11.80 bbl	
12/26/2010	01:29:38	117	4.5	8.57	0	360.4	Start Pumping Spacer	
12/26/2010	01:31:06	174	6.0	8.70	12	367.1		
12/26/2010	01:32:46	135	6.0	8.69	14	377.0		
12/26/2010	01:33:36	142	6.0	8.68	14	382.0	50 bbl MUDPUSH II @ 8.6 ppg	
12/26/2010	01:33:37	142	6.0	8.68	14	382.1	Good returns	
12/26/2010	01:34:26	140	5.9	8.68	15	386.9		
12/26/2010	01:36:06	149	6.0	8.68	16	396.9		
12/26/2010	01:37:46	162	6.0	8.69	18	406.8		
12/26/2010	01:39:26	165	6.0	8.69	17	416.8		
12/26/2010	01:41:06	170	5.9	8.69	17	426.7		
12/26/2010	01:41:07	169	6.0	8.69	17	426.8	End Spacer	
12/26/2010	01:41:15	170	6.0	8.69	16	427.6	Reset Total, Vol = 67.32 bbl	

Well			Field		Job Start		Customer	Job Number
SGU 8504B-25 F25 496			Story Gulch		Dec/25/2010		Encana	BJ90-00138
Date	Time 24-hr clock	Treating Pressure PSI	Flow Rate B/M	Density LB/G	Solid Fraction NULL	Volume BBL	Message	
12/26/2010	01:41:39	166	6.0	8.59	15	430.0	Bring to weight	
12/26/2010	01:41:40	163	5.9	8.59	15	430.1	Good returns	
12/26/2010	01:42:46	215	6.0	8.91	24	436.7		
12/26/2010	01:44:26	298	6.2	9.40	42	446.9		
12/26/2010	01:45:27	303	6.2	9.56	47	453.2	End Scavenger Slurry	
12/26/2010	01:45:29	305	6.2	9.57	47	453.4	Start Cement Slurry	
12/26/2010	01:46:06	295	6.3	9.59	48	457.3		
12/26/2010	01:47:46	323	6.3	9.65	49	467.7		
12/26/2010	01:49:26	318	6.2	9.67	49	478.1		
12/26/2010	01:51:06	316	6.3	9.73	50	488.5		
12/26/2010	01:52:46	447	8.1	9.76	50	500.6	562 bbl LiteCRETE @ 9 ppg	
12/26/2010	01:52:47	436	8.1	9.76	50	500.8	Took wet sample	
12/26/2010	01:52:48	436	8.1	9.76	50	500.9	Sample = 9 ppg on mud scale	
12/26/2010	01:52:49	443	8.1	9.76	50	501.0	Good returns	
12/26/2010	01:52:50	449	8.1	9.75	50	501.2	CemNET added to all slurry	
12/26/2010	01:54:26	410	8.1	9.72	49	514.1		
12/26/2010	01:56:06	382	8.1	9.73	50	527.7		
12/26/2010	01:57:46	364	8.3	9.70	51	541.3		
12/26/2010	01:59:26	193	6.3	9.75	49	553.2		
12/26/2010	02:01:06	214	6.2	9.99	49	563.7		
12/26/2010	02:02:46	203	6.3	9.67	46	574.2		
12/26/2010	02:04:26	245	6.3	9.74	49	584.6		
12/26/2010	02:06:06	236	6.3	9.78	49	595.1		
12/26/2010	02:07:46	360	8.1	9.71	47	608.1		
12/26/2010	02:09:26	346	8.2	9.68	46	621.7		
12/26/2010	02:11:06	381	8.1	9.76	49	635.3		
12/26/2010	02:12:46	408	8.2	9.74	50	648.8		
12/26/2010	02:14:26	260	6.3	9.69	50	660.7		
12/26/2010	02:16:06	108	4.5	9.69	48	669.1		
12/26/2010	02:17:46	217	6.3	9.74	48	679.3		
12/26/2010	02:19:26	107	4.4	9.81	48	689.4		
12/26/2010	02:21:06	118	4.4	9.94	51	696.8		
12/26/2010	02:22:46	241	6.3	9.88	47	704.7		
12/26/2010	02:24:26	243	6.3	9.79	51	715.1		
12/26/2010	02:26:06	231	6.3	9.79	53	725.6		
12/26/2010	02:27:46	229	6.3	9.78	54	736.1		
12/26/2010	02:29:26	227	6.3	9.78	54	746.5		
12/26/2010	02:31:06	232	6.3	9.79	54	757.0		
12/26/2010	02:32:46	229	6.3	9.81	54	767.5		
12/26/2010	02:34:26	225	6.3	9.79	48	777.9		
12/26/2010	02:36:06	236	6.2	9.76	48	788.4		
12/26/2010	02:37:46	248	6.3	9.79	48	798.8		
12/26/2010	02:39:26	209	6.3	9.83	48	809.3		
12/26/2010	02:41:06	178	6.1	9.84	47	819.8		
12/26/2010	02:42:46	121	4.4	10.05	36	827.2		
12/26/2010	02:44:26	116	4.4	10.51	39	834.5		
12/26/2010	02:46:06	255	6.3	10.63	45	843.5		
12/26/2010	02:47:46	310	6.3	10.81	47	853.9		
12/26/2010	02:49:26	306	6.3	10.91	48	864.4		
12/26/2010	02:51:06	307	6.3	11.01	48	874.8		
12/26/2010	02:52:46	296	6.3	11.10	48	885.3		
12/26/2010	02:54:26	286	6.3	10.68	49	895.8		
12/26/2010	02:56:06	144	4.4	10.20	49	904.2		
12/26/2010	02:57:46	151	4.4	10.04	49	911.5		

Well			Field		Job Start		Customer	Job Number
SGU 8504B-25 F25 496			Story Gulch		Dec/25/2010		Encana	BJ90-00138
Date	Time 24-hr clock	Treating Pressure PSI	Flow Rate B/M	Density LB/G	Solid Fraction NULL	Volume BBL	Message	
12/26/2010	03:01:06	160	4.4	10.06	44	926.2		
12/26/2010	03:02:46	118	4.3	10.17	0	933.6		
12/26/2010	03:03:00	92	4.0	10.32	0	934.6	Cement to surface @ 557 bbl cement away	
12/26/2010	03:04:26	47	4.1	8.56	0	940.2		
12/26/2010	03:04:40	25	4.1	8.55	0	941.2	End Cement Slurry	
12/26/2010	03:04:41	24	4.1	8.55	0	941.2	Drop Top Plug	
12/26/2010	03:04:42	29	4.0	8.55	0	941.3	Start Displacement	
12/26/2010	03:06:06	31	4.0	8.56	0	947.0		
12/26/2010	03:07:46	63	4.2	8.52	0	953.7		
12/26/2010	03:09:26	89	4.1	8.84	4	960.7		
12/26/2010	03:11:06	7	2.8	8.65	3	968.4		
12/26/2010	03:12:46	-3	2.0	8.63	2	971.7		
12/26/2010	03:14:26	-1	2.0	8.58	3	975.0		
12/26/2010	03:16:06	3	2.0	8.56	3	978.2		
12/26/2010	03:17:46	64	3.0	8.50	2	981.8		
12/26/2010	03:19:26	22	2.0	8.54	2	985.2		
12/26/2010	03:21:06	15	2.0	8.54	2	988.5		
12/26/2010	03:22:46	19	2.0	8.54	2	991.8		
12/26/2010	03:24:26	26	2.0	8.53	2	995.0		
12/26/2010	03:26:06	35	2.0	8.53	2	998.3		
12/26/2010	03:27:46	39	2.0	8.53	2	1001.5		
12/26/2010	03:29:26	40	2.0	8.53	2	1004.8		
12/26/2010	03:31:06	47	2.0	8.52	2	1008.1		
12/26/2010	03:32:46	61	2.0	8.52	2	1011.3		
12/26/2010	03:34:26	59	1.9	8.52	2	1014.6		
12/26/2010	03:36:06	66	1.9	8.52	2	1017.8		
12/26/2010	03:37:46	66	1.9	8.52	2	1021.0		
12/26/2010	03:39:26	75	2.0	8.52	2	1024.3		
12/26/2010	03:41:06	77	1.9	8.38	2	1027.5		
12/26/2010	03:42:46	89	1.9	8.45	2	1030.7		
12/26/2010	03:44:26	82	1.9	8.51	1	1033.9		
12/26/2010	03:46:06	82	1.9	8.51	0	1037.1		
12/26/2010	03:47:46	88	1.9	8.51	2	1040.3		
12/26/2010	03:49:26	93	1.9	8.50	0	1043.5		
12/26/2010	03:51:06	111	1.9	8.52	0	1046.7		
12/26/2010	03:52:46	118	1.9	8.52	0	1049.9		
12/26/2010	03:54:26	119	1.9	8.52	0	1053.1		
12/26/2010	03:56:06	130	1.9	8.52	0	1056.4		
12/26/2010	03:57:46	144	1.9	8.52	0	1059.6		
12/26/2010	03:59:26	142	1.9	8.51	0	1062.8		
12/26/2010	04:01:06	100	0.9	8.52	0	1064.7		
12/26/2010	04:02:46	135	1.1	8.51	0	1065.3		
12/26/2010	04:04:26	210	2.1	8.51	0	1067.7		
12/26/2010	04:06:06	97	0.0	8.52	0	1068.7		
12/26/2010	04:07:46	164	1.1	8.51	0	1070.1		
12/26/2010	04:09:26	182	2.1	8.51	0	1071.2		
12/26/2010	04:11:06	173	1.0	8.51	0	1073.4		
12/26/2010	04:12:46	325	3.2	8.52	0	1077.2		
12/26/2010	04:14:26	341	3.8	8.52	0	1082.6		
12/26/2010	04:16:06	686	8.1	8.52	0	1094.2		
12/26/2010	04:17:46	737	8.1	8.51	0	1107.7		
12/26/2010	04:19:26	722	8.1	8.52	0	1121.2		
12/26/2010	04:20:00	718	8.1	8.51	0	1125.8	225 bbl fresh water	
12/26/2010	04:20:01	712	8.1	8.51	0	1125.9	Good returns	

Well			Field		Job Start		Customer		Job Number	
SGU 8504B-25 F25 496			Story Gulch		Dec/25/2010		Encana		B190-00138	
Date	Time 24-hr clock	Treating Pressure PSI	Flow Rate B/M	Density LB/G	Solid Fraction NULL	Volume BBL	Message			
12/26/2010	04:22:46	701	8.1	8.52	0	1148.3				
12/26/2010	04:24:26	460	4.4	8.51	0	1158.8				
12/26/2010	04:26:06	400	2.2	8.51	0	1165.5				
12/26/2010	04:27:46	404	2.2	8.51	0	1169.2				
12/26/2010	04:29:16	922	0.0	8.52	0	1172.0	End Displacement			
12/26/2010	04:29:17	929	0.0	8.51	0	1172.0	Bump Top Plug			
12/26/2010	04:29:18	929	0.0	8.52	0	1172.0	Bump plug to 950 psi			
12/26/2010	04:29:26	926	0.0	8.51	0	1172.0				
12/26/2010	04:31:06	910	0.0	8.52	0	1172.1				
12/26/2010	04:32:46	900	0.0	8.51	0	1172.1				
12/26/2010	04:34:26	-61	0.0	8.52	0	1172.2				
12/26/2010	04:36:06	-60	0.0	8.52	0	1172.2				
12/26/2010	04:37:46	-60	0.0	8.52	0	1172.2				
12/26/2010	04:39:26	-60	0.0	8.52	0	1172.3				
12/26/2010	04:41:06	-63	0.0	8.52	0	1172.3				
12/26/2010	04:41:59	-64	0.0	8.52	0	1172.3	Float held, 3/4 bbl back			
12/26/2010	04:42:00	-63	0.0	8.52	0	1172.3	Good returns throughout job			
12/26/2010	04:42:02	-63	0.0	8.52	0	1172.3	Reset Total, Vol = 230.65 bbl			
12/26/2010	04:42:03	-63	0.0	8.52	0	1172.3	Reset Total, Vol = 0.00 bbl			
12/26/2010	04:42:46	-64	0.0	8.52	0	1172.3				
12/26/2010	04:44:26	-64	0.0	8.52	0	1172.4				
12/26/2010	04:46:06	-65	0.0	8.52	0	1172.4				
12/26/2010	04:47:46	-65	0.0	8.52	0	1172.4				

### Post Job Summary

Average Pump Rates, bbl/min					Volume of Fluid Injected, bbl			
Slurry	N2	Mud	Maximum Rate	Total Slurry	Mud	Spacer	N2	
3.8		3.5	8.2	1172.5	171.9	426.8		
Treating Pressure Summary, psi					Breakdown Fluid			
Maximum	Final	Average	Bump Plug to	Breakdown	Type	Volume	Density	
3117	-64	245	950			bbl	lb/gal	
Avg. N2 Percent	Designed Slurry Volume	Displacement	Mix Water Temp	Cement Circulated to Surface?	<input checked="" type="checkbox"/>	Volume	230.0 bbl	
%	562.0 bbl	12.0 bbl	80 degF	Washed Thru Perfs	<input type="checkbox"/>	To	ft	
Customer or Authorized Representative			Schlumberger Supervisor		Circulation Lost	<input type="checkbox"/>	Job Completed	<input checked="" type="checkbox"/>
James Gardener			Dave Wanczyk		-		-	