

# EnCana Corporation

## Planning Report - Geographic

<b>Database:</b>	EDM	<b>Local Co-ordinate Reference:</b>	Well Melbon Ranch 8-4-17
<b>Company:</b>	DJ/Paradox/WTX	<b>TVD Reference:</b>	WELL @ 4914.0ft (Original Well Elev)
<b>Project:</b>	Wattenberg	<b>MD Reference:</b>	WELL @ 4914.0ft (Original Well Elev)
<b>Site:</b>	New Drills	<b>North Reference:</b>	True
<b>Well:</b>	Melbon Ranch 8-4-17	<b>Survey Calculation Method:</b>	Minimum Curvature
<b>Wellbore:</b>	Wellbore #1		
<b>Design:</b>	Melbon Ranch 8-4-17		

<b>Project</b>	Wattenberg,		
<b>Map System:</b>	US State Plane 1983	<b>System Datum:</b>	Mean Sea Level
<b>Geo Datum:</b>	North American Datum 1983		
<b>Map Zone:</b>	Colorado Northern Zone		

Site	New Drills				
Site Position:		Northing:	1,278,589.08 ft	Latitude:	40° 5' 49.848 N
From:	Lat/Long	Easting:	3,130,247.44 ft	Longitude:	105° 2' 3.912 W
Position Uncertainty:	ft	Slot Radius:	in	Grid Convergence:	0.30 °

Well	Melbon Ranch 8-4-17					
Well Position	+N-S	14,256.2 ft	Northing:	1,293,762.40 ft	Latitude:	40° 8' 12.696 N
	+E-W	99,220.4 ft	Easting:	3,229,331.55 ft	Longitude:	104° 40' 47.100 W
Position Uncertainty		ft	Wellhead Elevation:	ft	Ground Level:	4,901.0 ft

<b>Wellbore</b>	Wellbore #1				
<b>Magnetics</b>	<b>Model Name</b>	<b>Sample Date</b>	<b>Declination (°)</b>	<b>Dip Angle (°)</b>	<b>Field Strength (nT)</b>
	IGRF200510	12/31/2009	8.95	66.91	53,174

<b>Design</b>	Melbon Ranch 8-4-17				
<b>Audit Notes:</b>					
<b>Version:</b>	<b>Phase:</b>	PROTOTYPE		<b>Tie On Depth:</b>	0.0
<b>Vertical Section:</b>	<b>Depth From (TVD) (ft)</b>	<b>+N/-S (ft)</b>	<b>+E/-W (ft)</b>	<b>Direction (°)</b>	
	0.0	0.0	0.0	28.35	

<b>Plan Sections</b>										
Measured Depth (ft)	Inclination (°)	Azimuth (°)	Vertical Depth (ft)	+N/-S (ft)	+E/-W (ft)	Dogleg Rate (°/100ft)	Build Rate (°/100ft)	Turn Rate (°/100ft)	TFO (°)	Target
0.0	0.00	0.00	0.0	0.0	0.0	0.00	0.00	0.00	0.00	
900.0	0.00	0.00	900.0	0.0	0.0	0.00	0.00	0.00	0.00	
1,255.0	7.10	28.35	1,254.1	19.3	10.4	2.00	2.00	0.00	28.35	
6,425.5	7.10	28.35	6,384.9	581.7	313.9	0.00	0.00	0.00	0.00	
6,780.5	0.00	0.00	6,739.0	601.1	324.3	2.00	-2.00	0.00	180.00	
7,880.5	0.00	0.00	7,839.0	601.1	324.3	0.00	0.00	0.00	0.00	Melbon Ranch 8-4-

# EnCana Corporation

## Planning Report - Geographic

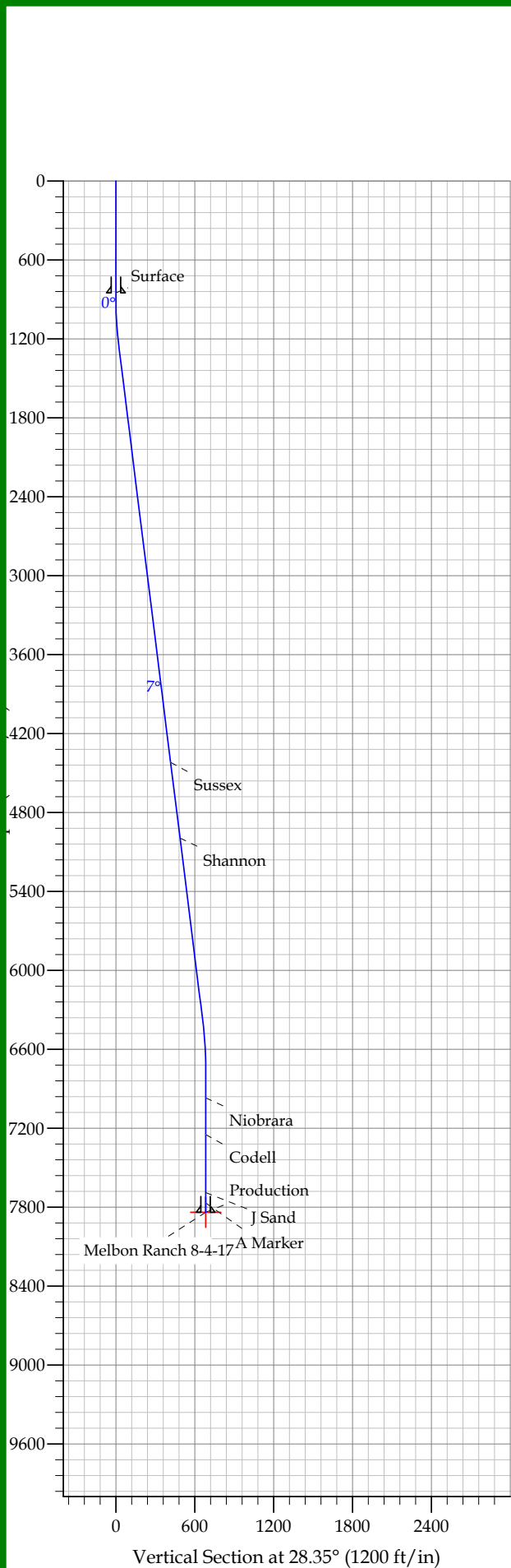
<b>Database:</b>	EDM	<b>Local Co-ordinate Reference:</b>	Well Melbon Ranch 8-4-17
<b>Company:</b>	DJ/Paradox/WTX	<b>TVD Reference:</b>	WELL @ 4914.0ft (Original Well Elev)
<b>Project:</b>	Wattenberg	<b>MD Reference:</b>	WELL @ 4914.0ft (Original Well Elev)
<b>Site:</b>	New Drills	<b>North Reference:</b>	True
<b>Well:</b>	Melbon Ranch 8-4-17	<b>Survey Calculation Method:</b>	Minimum Curvature
<b>Wellbore:</b>	Wellbore #1		
<b>Design:</b>	Melbon Ranch 8-4-17		

Planned Survey									
Measured Depth (ft)	Inclination (°)	Azimuth (°)	Vertical Depth (ft)	+N/-S (ft)	+E/-W (ft)	Map Northing (ft)	Map Easting (ft)	Latitude	Longitude
0.0	0.00	0.00	0.0	0.0	0.0	1,293,762.40	3,229,331.55	40° 8' 12.696 N	104° 40' 47.100 W
850.0	0.00	0.00	850.0	0.0	0.0	1,293,762.40	3,229,331.55	40° 8' 12.696 N	104° 40' 47.100 W
<b>Surface</b>									
900.0	0.00	0.00	900.0	0.0	0.0	1,293,762.40	3,229,331.55	40° 8' 12.696 N	104° 40' 47.100 W
1,255.0	7.10	28.35	1,254.1	19.3	10.4	1,293,781.83	3,229,341.80	40° 8' 12.887 N	104° 40' 46.966 W
4,444.4	7.10	28.35	4,419.0	366.3	197.6	1,294,130.46	3,229,525.77	40° 8' 16.315 N	104° 40' 44.555 W
<b>Sussex</b>									
5,023.8	7.10	28.35	4,994.0	429.3	231.6	1,294,193.80	3,229,559.19	40° 8' 16.938 N	104° 40' 44.118 W
<b>Shannon</b>									
6,425.5	7.10	28.35	6,384.9	581.7	313.9	1,294,347.02	3,229,640.04	40° 8' 18.445 N	104° 40' 43.058 W
6,780.5	0.00	0.00	6,739.0	601.1	324.3	1,294,366.45	3,229,650.30	40° 8' 18.636 N	104° 40' 42.924 W
7,010.5	0.00	0.00	6,969.0	601.1	324.3	1,294,366.45	3,229,650.30	40° 8' 18.636 N	104° 40' 42.924 W
<b>Niobrara</b>									
7,290.5	0.00	0.00	7,249.0	601.1	324.3	1,294,366.45	3,229,650.30	40° 8' 18.636 N	104° 40' 42.924 W
<b>Codell</b>									
7,730.5	0.00	0.00	7,689.0	601.1	324.3	1,294,366.45	3,229,650.30	40° 8' 18.636 N	104° 40' 42.924 W
<b>J Sand</b>									
7,809.5	0.00	0.00	7,768.0	601.1	324.3	1,294,366.45	3,229,650.30	40° 8' 18.636 N	104° 40' 42.924 W
<b>A Marker</b>									
7,880.5	0.00	0.00	7,839.0	601.1	324.3	1,294,366.45	3,229,650.30	40° 8' 18.636 N	104° 40' 42.924 W
<b>Production - Melbon Ranch 8-4-17</b>									

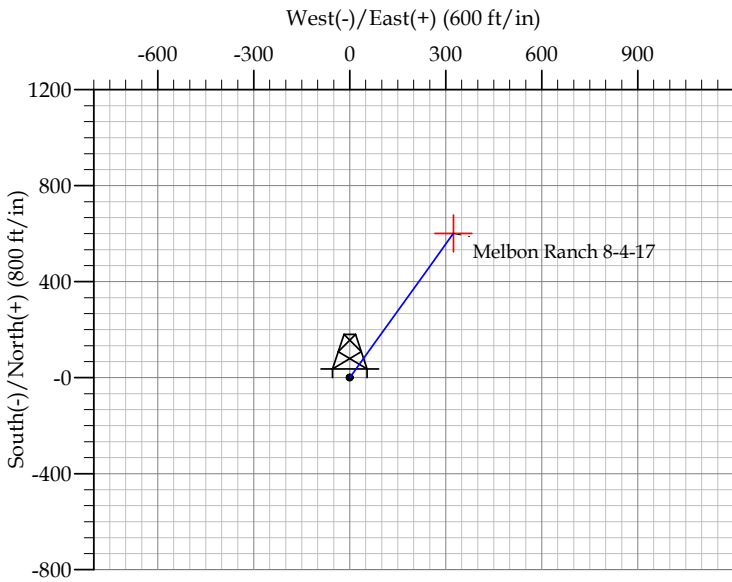
Design Targets									
Target Name	Dip Angle (°)	Dip Dir. (°)	TVD (ft)	+N/-S (ft)	+E/-W (ft)	Northing (ft)	Easting (ft)	Latitude	Longitude
- hit/miss target									
- Shape									
Melbon Ranch 8-4-17	0.00	0.00	7,839.0	601.1	324.3	1,294,366.45	3,229,650.30	40° 8' 18.636 N	104° 40' 42.924 W
- plan hits target									
- Point									

Casing Points					
Measured Depth (ft)	Vertical Depth (ft)	Name	Casing Diameter (in)	Hole Diameter (in)	
850.0	850.0	Surface	8.625	12.250	
7,880.5	7,839.0	Production	4.500	7.785	

Formations						
Measured Depth (ft)	Vertical Depth (ft)	Name	Lithology	Dip (°)	Dip Direction (°)	
4,444.4	4,419.0	Sussex		0.00		
5,023.8	4,994.0	Shannon		0.00		
7,010.5	6,969.0	Niobrara		0.00		
7,290.5	7,249.0	Codell		0.00		
7,730.5	7,689.0	J Sand		0.00		
7,809.5	7,768.0	A Marker		0.00		



REFERENCE INFORMATION										
Co-ordinate (N/E) Reference: Well Melbon Ranch 8-4-17, True North										
Vertical (TVD) Reference: WELL @ 4914.0ft (Original Well Elev)										
Section (VS) Reference: Slot - (0.0N, 0.0E)										
Measured Depth Reference: WELL @ 4914.0ft (Original Well Elev)										
Calculation Method:										
WELL DETAILS: Melbon Ranch 8-4-17										
Ground Level: 4901.0										
SECTION DETAILS										
Sec	MD	Inc	Azi	TVD	+N/-S	+E/-W	DLeg	TFace	VSec	Target
1	0.0	0.00	0.00	0.0	0.0	0.0	0.00	0.00	0.0	
2	900.0	0.00	0.00	900.0	0.0	0.0	0.00	0.00	0.0	
3	1255.0	7.10	28.35	1254.1	19.3	10.4	2.00	28.35	22.0	
4	6425.5	7.10	28.35	6384.9	581.7	313.9	0.00	0.00	661.0	
5	6780.5	0.00	0.00	6739.0	601.1	324.3	2.00	180.00	683.0	
6	7880.5	0.00	0.00	7839.0	601.1	324.3	0.00	0.00	683.0	Melbon Ranch 8-4-17



FORMATION TOP DETAILS		
TVDPath	MDPath	Formation
4419.0	4444.4	Sussex
4994.0	5023.8	Shannon
6969.0	7010.5	Niobrara
7249.0	7290.5	Codell
7689.0	7730.5	J Sand
7768.0	7809.5	A Marker

CASING DETAILS			
TVD	MD	Name	Size
850.0	850.0	Surface	8.625
7839.0	7880.5	Production	4.500