
OXY GRAND JUNCTION EBUSINESS

**CC 697-08-58C
GRAND VALLEY
Garfield County , Colorado**

Cement Surface Casing
18-Sep-2011

Post Job Report

The Road to Excellence Starts with Safety

Sold To #: 344034		Ship To #: 2879088		Quote #:		Sales Order #: 8474652	
Customer: OXY GRAND JUNCTION EBUSINESS				Customer Rep: Benevides, Victor			
Well Name: CC			Well #: 697-08-58C			API/UWI #:	
Field: GRAND VALLEY		City (SAP): PARACHUTE		County/Parish: Garfield		State: Colorado	
Lat: N 39.534 deg. OR N 39 deg. 32 min. 1.91 secs.				Long: W 108.242 deg. OR W -109 deg. 45 min. 29.214 secs.			
Contractor: H&P 330			Rig/Platform Name/Num: H&P 330				
Job Purpose: Cement Surface Casing							
Well Type: Development Well			Job Type: Cement Surface Casing				
Sales Person: ROYSTER, JACOB			Srvc Supervisor: CHASTAIN, DERICK			MBU ID Emp #: 455848	

Job Personnel

HES Emp Name	Exp Hrs	Emp #	HES Emp Name	Exp Hrs	Emp #	HES Emp Name	Exp Hrs	Emp #
CHASTAIN, DERICK Allan	10	455848	PETERSON, JEFFERY B	10	498022	STILLSON, ERIC W	10	393789
VANALSTYNE, TROY L	10	420256						

Equipment

HES Unit #	Distance-1 way	HES Unit #	Distance-1 way	HES Unit #	Distance-1 way	HES Unit #	Distance-1 way
10297346	120 mile	10783493	120 mile	10822007	120 mile	10871245	120 mile
10951250	120 mile	11021972	120 mile	11027039	120 mile	11071559	120 mile
11360881	120 mile	6374L	120 mile				

Job Hours

Date	On Location Hours	Operating Hours	Date	On Location Hours	Operating Hours	Date	On Location Hours	Operating Hours
9/18/2011	10	6						

TOTAL Total is the sum of each column separately

Job

Formation Name	Top	Bottom	Called Out	Date	Time	Time Zone
Formation Depth (MD)			On Location	17 - Sep - 2011	22:30	MST
Form Type		BHST	Job Started	18 - Sep - 2011	06:00	MST
Job depth MD	2722. ft	Job Depth TVD	Job Completed	18 - Sep - 2011	10:54	MST
Water Depth		Wk Ht Above Floor	Departed Loc	18 - Sep - 2011	18:08	MST
Perforation Depth (MD)	From	To		18 - Sep - 2011	19:30	MST

Well Data

Description	New / Used	Max pressure psig	Size in	ID in	Weight lbm/ft	Thread	Grade	Top MD ft	Bottom MD ft	Top TVD ft	Bottom TVD ft
OPEN HOLE				14.75				.	2722.	.	2722.
SURFACE CASING	Unknown		9.625	8.921	36.		J-55	.	2671.	.	2671.

Sales/Rental/3rd Party (HES)

Description	Qty	Qty uom	Depth	Supplier
PLUG,CMTG,TOP,9 5/8,HWE,8.16 MIN/9.06 MA	1	EA		

Tools and Accessories

Type	Size	Qty	Make	Depth	Type	Size	Qty	Make	Depth	Type	Size	Qty	Make
Guide Shoe					Packer					Top Plug	9.625	1	HES
Float Shoe					Bridge Plug					Bottom Plug			
Float Collar					Retainer					SSR plug set			
Insert Float										Plug Container	9.625	1	HES
Stage Tool										Centralizers			

Miscellaneous Materials

Gelling Agt	Conc	Surfactant	Conc	Acid Type	Qty	Conc	%
Treatment Fld	Conc	Inhibitor	Conc	Sand Type	Size		Qty

Fluid Data

Stage/Plug #: 1

Fluid #	Stage Type	Fluid Name	Qty	Qty uom	Mixing Density lbm/gal	Yield ft ³ /sk	Mix Fluid Gal/sk	Rate bbl/min	Total Mix Fluid Gal/sk
1	Water Spacer		20.00	bbl	8.33	.0	.0	4	
2	Gel Spacer		20.00	bbl	.	.0	.0	4	
3	Water Spacer		20.00	bbl	.	.0	.0	4	
4	VersaCem Lead Cement	VERSACEM (TM) SYSTEM (452010)	1050.0	sacks	12.3	2.33	12.62	6	12.62
	12.62 Gal	FRESH WATER							
5	VariCemTail Cement	VERSACEM (TM) SYSTEM (452010)	170.0	sacks	12.8	2.07	10.67	6	10.67
	10.67 Gal	FRESH WATER							
6	Displacement		203.00	bbl	.	.0	.0	6	
7	Topout Cement	HALCEM (TM) SYSTEM (452986)	231.0	sacks	12.5	1.97	10.96	2	10.96
	10.96 Gal	FRESH WATER							
Calculated Values		Pressures		Volumes					
Displacement	202.7	Shut In: Instant		Lost Returns	726	Cement Slurry	498.4	Pad	
Top Of Cement	SURFACE	5 Min		Cement Returns	7	Actual Displacement	202.7	Treatment	
Frac Gradient		15 Min		Spacers	60	Load and Breakdown		Total Job	762
Rates									
Circulating	6	Mixing	6	Displacement	6	Avg. Job	6		
Cement Left In Pipe	Amount	49.4 ft	Reason	Shoe Joint					
Frac Ring # 1 @	ID	Frac ring # 2 @	ID	Frac Ring # 3 @	ID	Frac Ring # 4 @	ID		
The Information Stated Herein Is Correct				Customer Representative Signature					

The Road to Excellence Starts with Safety

Sold To #: 344034	Ship To #: 2879088	Quote #:	Sales Order #: 8474652
Customer: OXY GRAND JUNCTION EBUSINESS		Customer Rep: Benevides, Victor	
Well Name: CC	Well #: 697-08-58C	API/UWI #:	
Field: GRAND VALLEY	City (SAP): PARACHUTE	County/Parish: Garfield	State: Colorado
Legal Description:			
Lat: N 39.534 deg. OR N 39 deg. 32 min. 1.91 secs.		Long: W 108.242 deg. OR W -109 deg. 45 min. 29.214 secs.	
Contractor: H&P 330		Rig/Platform Name/Num: H&P 330	
Job Purpose: Cement Surface Casing			Ticket Amount:
Well Type: Development Well		Job Type: Cement Surface Casing	
Sales Person: ROYSTER, JACOB		Srv Supervisor: CHASTAIN, DERICK	MBU ID Emp #: 455848

Activity Description	Date/Time	Cht #	Rate bbl/min	Volume bbl		Pressure psig		Comments
				Stage	Total	Tubing	Casing	
Call Out	09/17/2011 22:30							
Pre-Convoy Safety Meeting	09/18/2011 01:00							WITH ALL HES PERSONNEL
Arrive at Location from Service Center	09/18/2011 06:00							RIG STILL RUNNING CASING. LANDED CASING AT 0940.
Assessment Of Location Safety Meeting	09/18/2011 06:15							WITH ALL HES PERSONNEL
Other	09/18/2011 08:30							SPOT EQUIPMENT. 1 PUMP TRUCK AND 1 660 BULK TRUCK.
Pre-Rig Up Safety Meeting	09/18/2011 08:45							WITH ALL HES PERSONNEL
Rig-Up Equipment	09/18/2011 09:00							RIGGED UP TO WELL OFF LINE.
Pre-Job Safety Meeting	09/18/2011 10:30							WITH ALL PERSONNEL ON LOCATION
Start Job	09/18/2011 10:54							TD: 2722', TP: 2671.4', SJ: 49.4', FC: 2621.9', CSG: 9.625" 36# J-55, OH: 14.75", MUD: PPG: 9.5, TEMP: 96, PV: 18, YP: 18
Other	09/18/2011 10:55		2	2			150.0	FILL LINES
Test Lines	09/18/2011 10:56							STAGED TEST AT 2090 PSI, THEN TESTED TO 3000 PSI
Pump Spacer 1	09/18/2011 10:59		4	20			215.0	FRESH H2O SPACER
Pump Spacer 1	09/18/2011 11:05		4	20			178.0	GEL SPACER, 5 GAL PER 20 BBL
Pump Spacer 1	09/18/2011 11:10		4	20			180.0	FRESH H2O SPACER. SLOWED RATE TO MIX UP TUB.

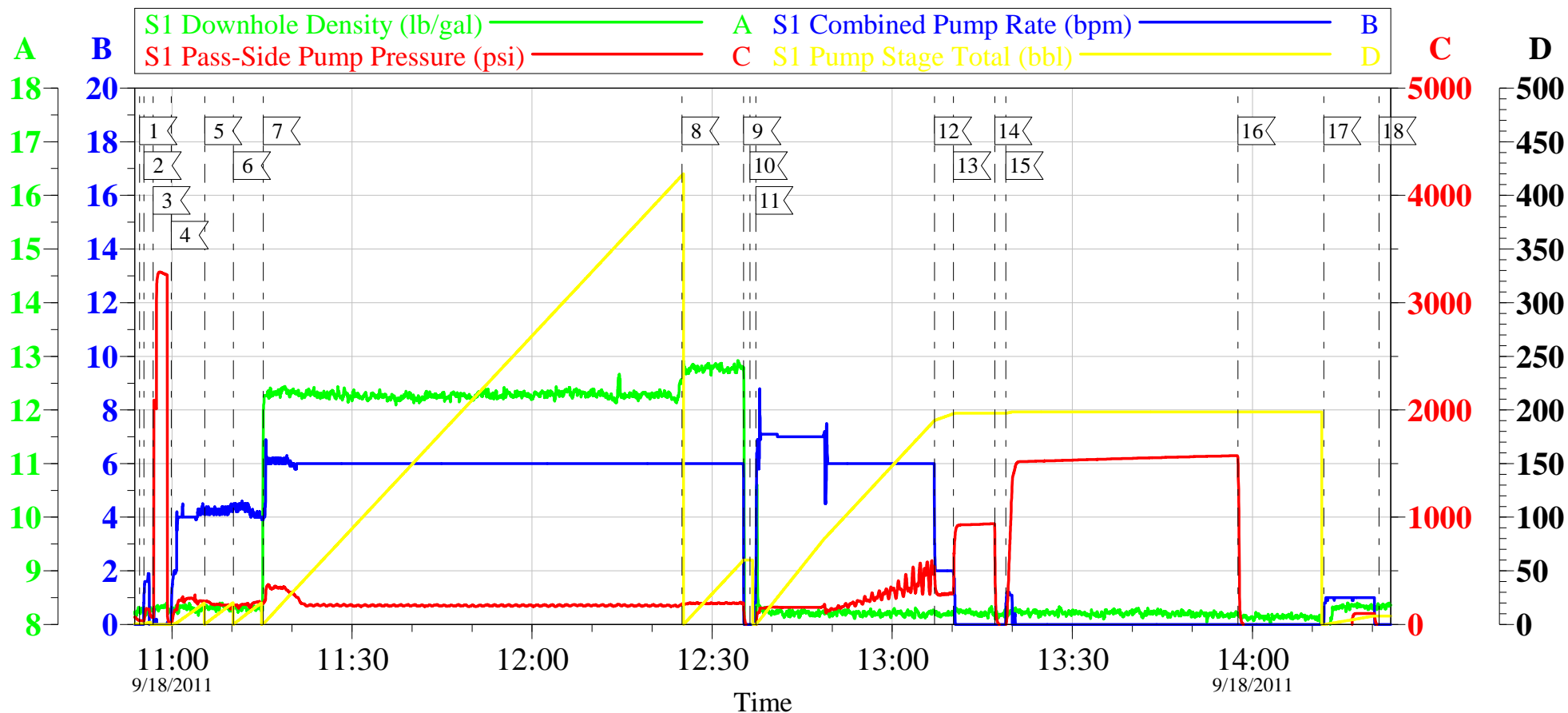
Activity Description	Date/Time	Cht #	Rate bbl/min	Volume bbl		Pressure psig		Comments
				Stage	Total	Tubing	Casing	
Pump Lead Cement	09/18/2011 11:15		6	435.7			335.0	1050 SKS, 12.3 LB/GAL, 2.33 FT3/SK, 12.62 GAL/SK. LOST RETURNS AT 35 GONE OF LEAD CEMENT
Pump Tail Cement	09/18/2011 12:24		6	62.7			205.0	170 SKS, 12.8 LB/GAL, 2.07 FT3/SK, 10.67 GAL/SK
Shutdown	09/18/2011 12:35							
Drop Top Plug	09/18/2011 12:36							VERIFY PLUG LAUNCHED
Pump Displacement	09/18/2011 12:37		6	202.7			540.0	FRESH H2O DISPLACEMENT. NO CEMENT TO SURFACE DURING DISPLACEMENT
Slow Rate	09/18/2011 13:07		2	192			315.0	SLOW RATE 10 BBLs PRIOR TO CALCULATED DISPLACEMENT
Bump Plug	09/18/2011 13:10		2	202.7			950.0	PLUG BUMPED
Check Floats	09/18/2011 13:17							FLOATS HOLDING, 1 BBL BACK TO TRUCK
Pressure Up	09/18/2011 13:18						1500.0	TEST CASING AT 1500 PSI FOR 30 MIN.
Release Casing Pressure	09/18/2011 13:57							
Clean Lines	09/18/2011 14:11		1	10			200.0	PUMP SUGAR WATER DOWN PARACITE
End Job	09/18/2011 14:21							GOOD RETURNS UP TO 35 BBL GONE OF CMT. NO RETURNS THROUGHOUT REST OF JOB.
Start Job	09/18/2011 15:07							TOP-OUT #1
Establish Rate	09/18/2011 15:08							USED 6X5 TO INITIATE FLOW
Pump Cement	09/18/2011 15:08		2	33			40.0	94 SKS TOP-OUT, 12.5 PPG, 1.97 FT3/SK, 10.96 GAL/SK. NO CEMENT TO SURFACE
Shutdown	09/18/2011 15:25							
End Job	09/18/2011 15:26							CEMENT TO SURFACE

Activity Description	Date/Time	Cht #	Rate bbl/min	Volume bbl		Pressure psig		Comments
				Stage	Total	Tubing	Casing	
Start Job	09/18/2011 17:41							TOP OUT #2
Establish Rate	09/18/2011 17:41							USED 6X5 TO INITIATE FLOW
Pump Cement	09/18/2011 17:42							
Shutdown	09/18/2011 17:56							
Pump Cement	09/18/2011 17:59							
Shutdown	09/18/2011 17:59							
Pump Cement	09/18/2011 18:03			48.1				137 SKS TOP-OUT, 12.5 PPG, 1.97 FT3/SK, 10.96 GAL/SK. 7 BBLS TO SURFACE. 243 SKS LEFT ON LOCATION.
Shutdown	09/18/2011 18:08							
End Job	09/18/2011 18:08							NO DEREK CHARGES, 2 ADD HOURS, 50 LBS SUGAR USED.
Pre-Rig Down Safety Meeting	09/18/2011 18:15							WITH ALL HES PERSONNEL
Rig-Down Equipment	09/18/2011 18:20							
Pre-Convoy Safety Meeting	09/18/2011 19:20							WITH ALL HES PERSONNEL
Crew Leave Location	09/18/2011 19:30							LEFT LOCATION FREE OF DEBRESS
Comment	09/18/2011 19:30							THANK YOU FOR USING HALLIBURTON CEMENT DEPARTMENT. DERICK CHASTAIN AND CREW

OXY

CC 697-08-58C

SURFACE CASING



1 START JOB	10:54:38	2 FILL LINES	10:55:22	3 TEST LINES	10:56:51
4 PUMP H2O SPACER	10:59:53	5 PUMP GEL SPACER	11:05:29	6 PUMP H2O SPACER	11:10:14
7 PUMP LEAD CEMENT	11:15:14	8 PUMP TAIL CEMENT	12:24:58	9 SHUTDOWN	12:35:15
10 DROP PLUG	12:36:19	11 PUMP DISPLACEMENT	12:37:17	12 SLOW RATE	13:07:03
13 BUMP PLUG	13:10:13	14 CHECK FLOATS	13:17:05	15 TEST CASING	13:18:57
16 RELEASE PRESSURE	13:57:37	17 CLEAR PARASITE	14:11:55	18 END JOB	14:21:06

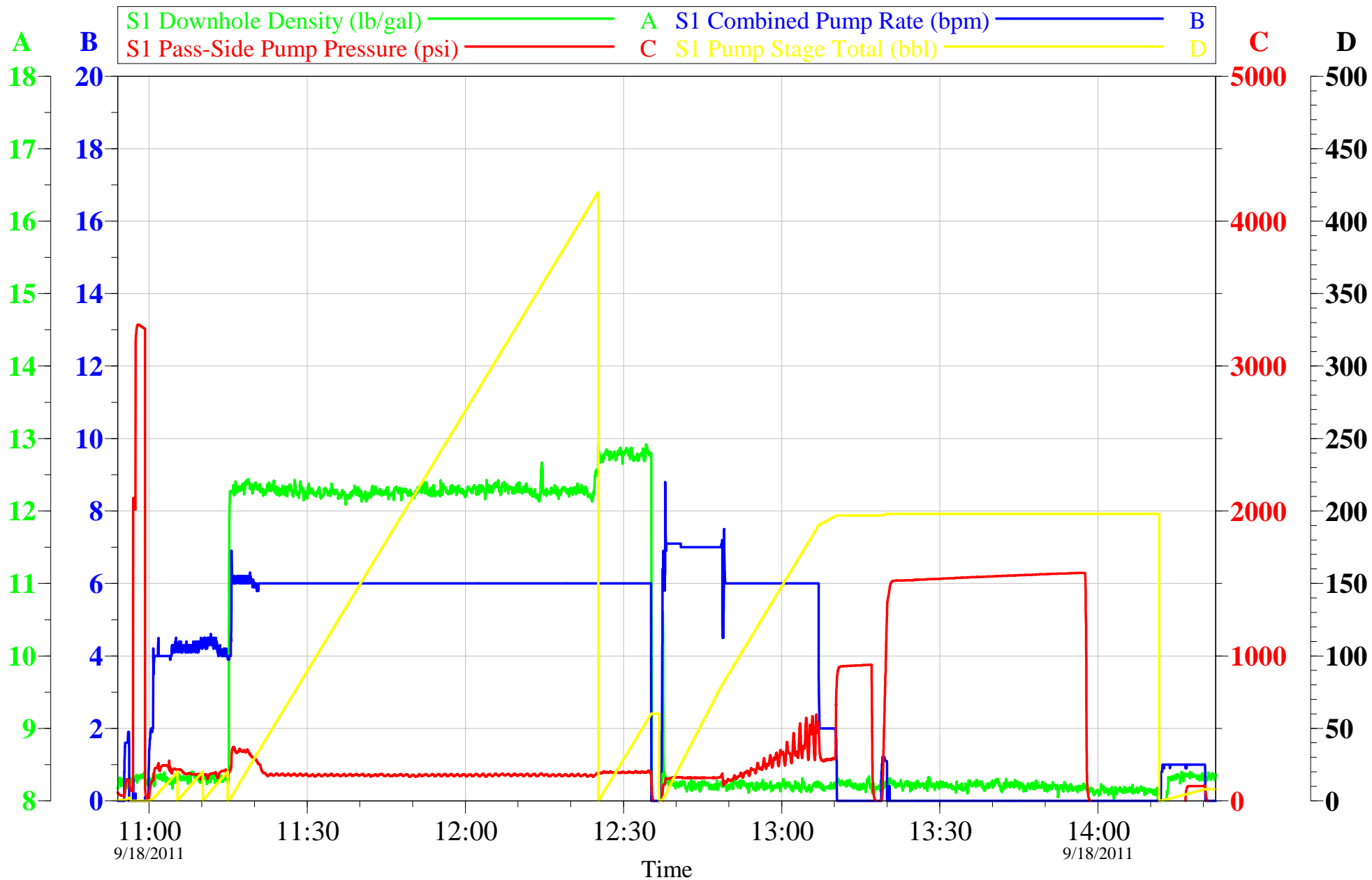
Customer: OXY	Job Date: 18-Sep-2011	Sales Order #: 8474652
Well Description: CC 697-08-58C	Job Type: SURFACE	ADC Used: YES
Customer Rep: JEFF GILL	Service Supervisor: DERICK CHASTAIN	Pump # 8 /Operator: ERIC STILLSON

OptiCem v6.4.10
18-Sep-11 18:33

OXY

CC 697-08-58C

SURFACE CASING



Customer: OXY
Well Description: CC 697-08-58C
Customer Rep: JEFF GILL

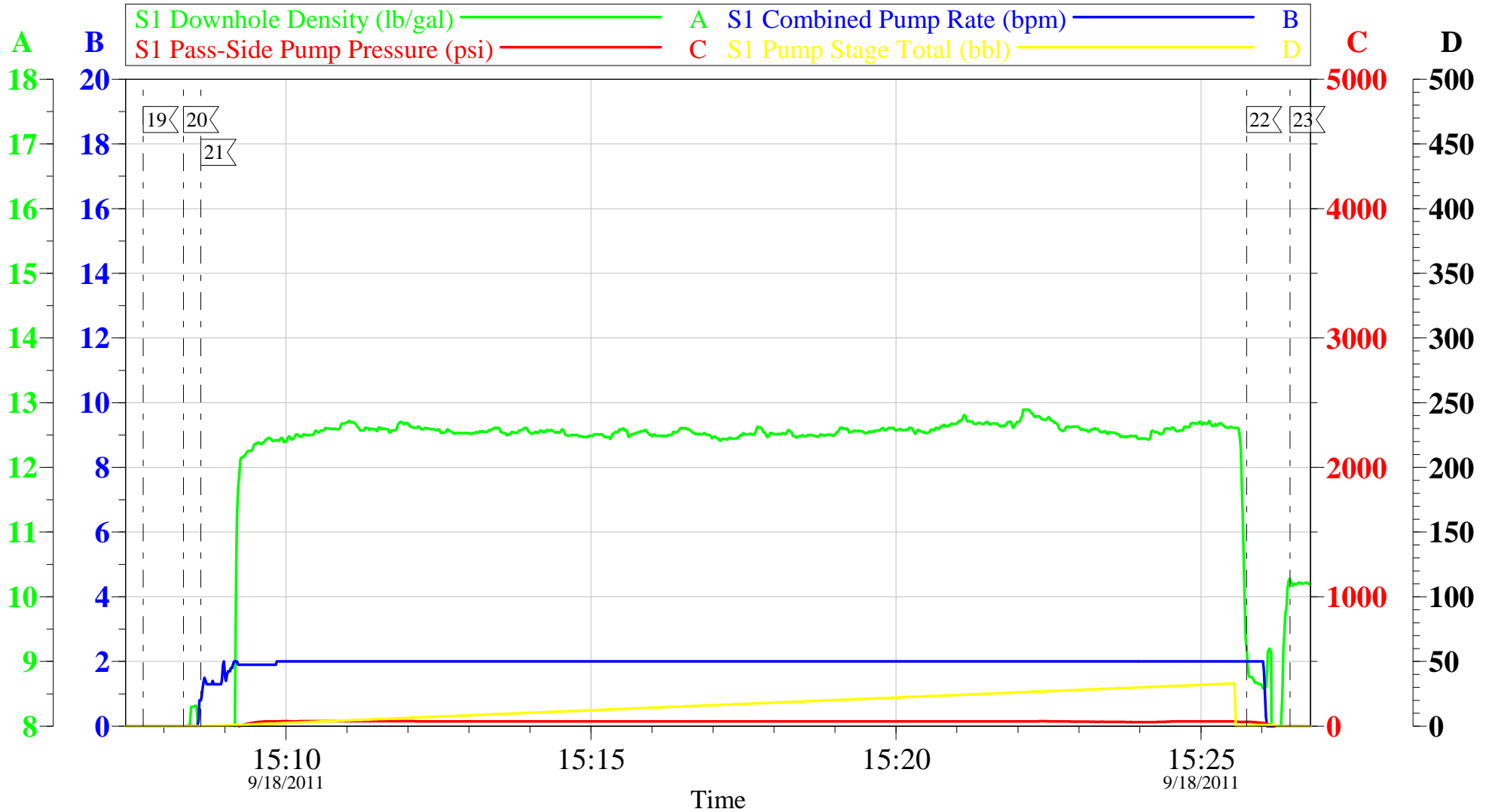
Job Date: 18-Sep-2011
Job Type: SURFACE
Service Supervisor: DERICK CHASTAIN

Sales Order #: 8474652
ADC Used: YES
Pump # 8 /Operator: ERIC STILLSON

OptiCem v6.4.10
18-Sep-11 15:43

OXY

CC 697-08-58C TOP OUT #1



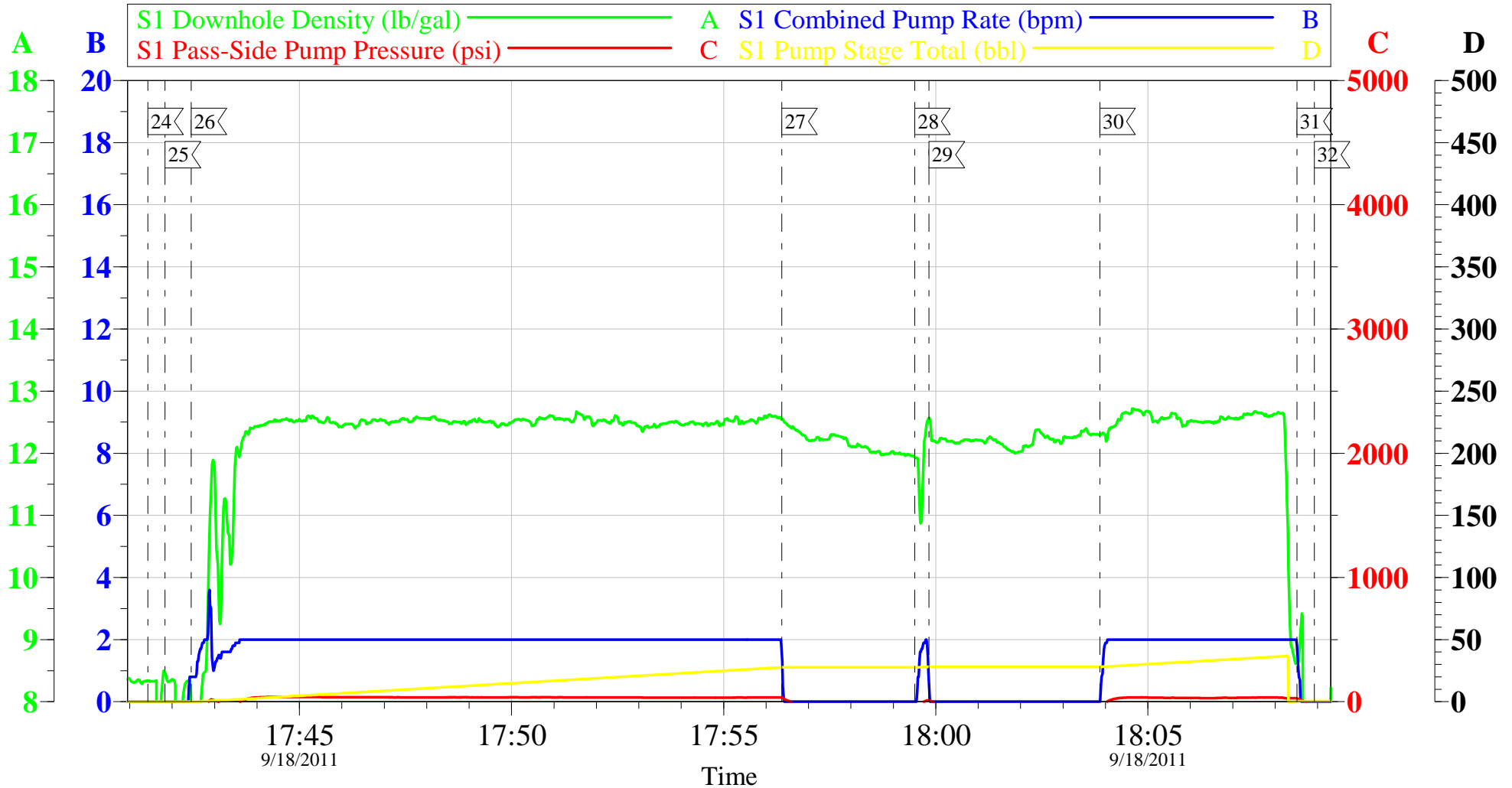
19 START JOB	15:07:40	20 INITIATE FLOW	15:08:19	21 PUMP T/O CEMENT	15:08:36
22 SHUTDOWN	15:25:45	23 END JOB	15:26:28		

Customer: OXY	Job Date: 18-Sep-2011	Sales Order #: 8474652
Well Description: CC 697-08-58C	Job Type: TOP OUT	ADC Used: YES
Customer Rep: JEFF GILL	Service Supervisor: DERICK CHASTAIN	Pump # 8 /Operator: ERIC STILLSON

OptiCem v6.4.10
18-Sep-11 15:48

OXY

CC 697-08-58C TOP OUT #2



24<	START JOB	17:41:25	25<	INITIATE FLOW	17:41:50	26<	PUMP T/O CEMENT	17:42:27
27<	SHUTDOWN	17:56:22	28<	PUMP T/O CEMENT	17:59:30	29<	SHUTDOWN	17:59:50
30<	PUMP T/O CEMENT	18:03:52	31<	SHUTDOWN	18:08:31	32<	END JOB	18:08:55

Customer:	OXY	Job Date:	18-Sep-2011	Sales Order #:	8474652
Well Description:	CC 697-08-58C	Job Type:	TOP OUT	ADC Used:	YES
Customer Rep:	JEFF GILL	Service Supervisor:	DERICK CHASTAIN	Pump # 8 /Operator:	ERIC STILLSON

OptiCem v6.4.10
18-Sep-11 18:31

HALLIBURTON

Water Analysis Report

Company: OXY
Submitted by: DERICK CHASTAIN
Attention: J. Trout
Lease: CC
Well #: 697-08-58C

Date: 9/18/2011
Date Rec.: 9/18/2011
S.O.#: 8474652
Job Type: SURFACE

Specific Gravity	<i>MAX</i>	<i>1</i>
pH	<i>8</i>	<i>7</i>
Potassium (K)	<i>5000</i>	<i>300</i> Mg / L
Calcium (Ca)	<i>500</i>	<i>100</i> Mg / L
Iron (FE2)	<i>300</i>	<i>0</i> Mg / L
Chlorides (Cl)	<i>3000</i>	<i>0</i> Mg / L
Sulfates (SO ₄)	<i>1500</i>	<i>400</i> Mg / L
Chlorine (Cl ₂)		<i>0</i> Mg / L
Temp	<i>40-80</i>	<i>70</i> Deg
Total Dissolved Solids		<i>450</i> Mg / L

Respectfully: DERICK CHASTAIN

Title: CEMENTING SUPERVISOR

Location: Grand Junction, CO

NOTICE:

This report is limited to the described sample tested. Any person using or relying on this report agrees that Halliburton shall not be liable for any loss or damage whether due to act or omission resulting from such report or

Sales Order #: 8474652	Line Item: 10	Survey Conducted Date: 9/18/2011
Customer: OXY GRAND JUNCTION EBUSINESS		Job Type (BOM): CMT SURFACE CASING BOM
Customer Representative: JAMES D CLAN		API / UWI: (leave blank if unknown) AFEYK2AZH0JTT52AAAA
Well Name: CC		Well Number: 697-08-58C
Well Type: Development Well	Well Country: United States of America	
H2S Present:	Well State: Colorado	Well County: Garfield

Dear Customer,

We hope that you were satisfied with the service quality of this job performed by Halliburton. It is the aim of our management and service personnel to deliver equipment and service of a standard unmatched in the service sector of the energy industry.

Please take the time to let us know if our performance met with your satisfaction. Please be as critical as possible to ensure we constantly improve our service. Your comments are of great value to us and are intended for the exclusive use of Halliburton.

CUSTOMER SATISFACTION SURVEY

CATEGORY	CUSTOMER SATISFACTION RESPONSE	
Survey Conducted Date	The date the survey was conducted	9/18/2011
Survey Interviewer	The survey interviewer is the person who initiated the survey.	DERICK CHASTAIN (HB23225)
Customer Participation	Did the customer participate in this survey? (Y/N)	Yes
Customer Representative	Enter the Customer representative name	JAMES D CLAN
HSE	Was our HSE performance satisfactory? Circle Y or N	Yes
Equipment	Were you satisfied with our Equipment? Circle Y or N	Yes
Personnel	Were you satisfied with our people? Circle Y or N	Yes
Customer Comment	Customer's Comment	SAVED ABOUT 3 HOURS OF RIG TIME CEMENTING OFFLINE. GREAT TO KEEP SURFACE HEAD ON LOCATION
Job DVA	Did we provide job DVA above our normal service today? Circle Y or N	No
Time	Please enter hours in decimal format to nearest quarter hour.	
Other	Enter short text for other efficiencies gained.	
Customer Initials	Customer's Initials	
Please provide details	Please describe how the job efficiencies were gained.	