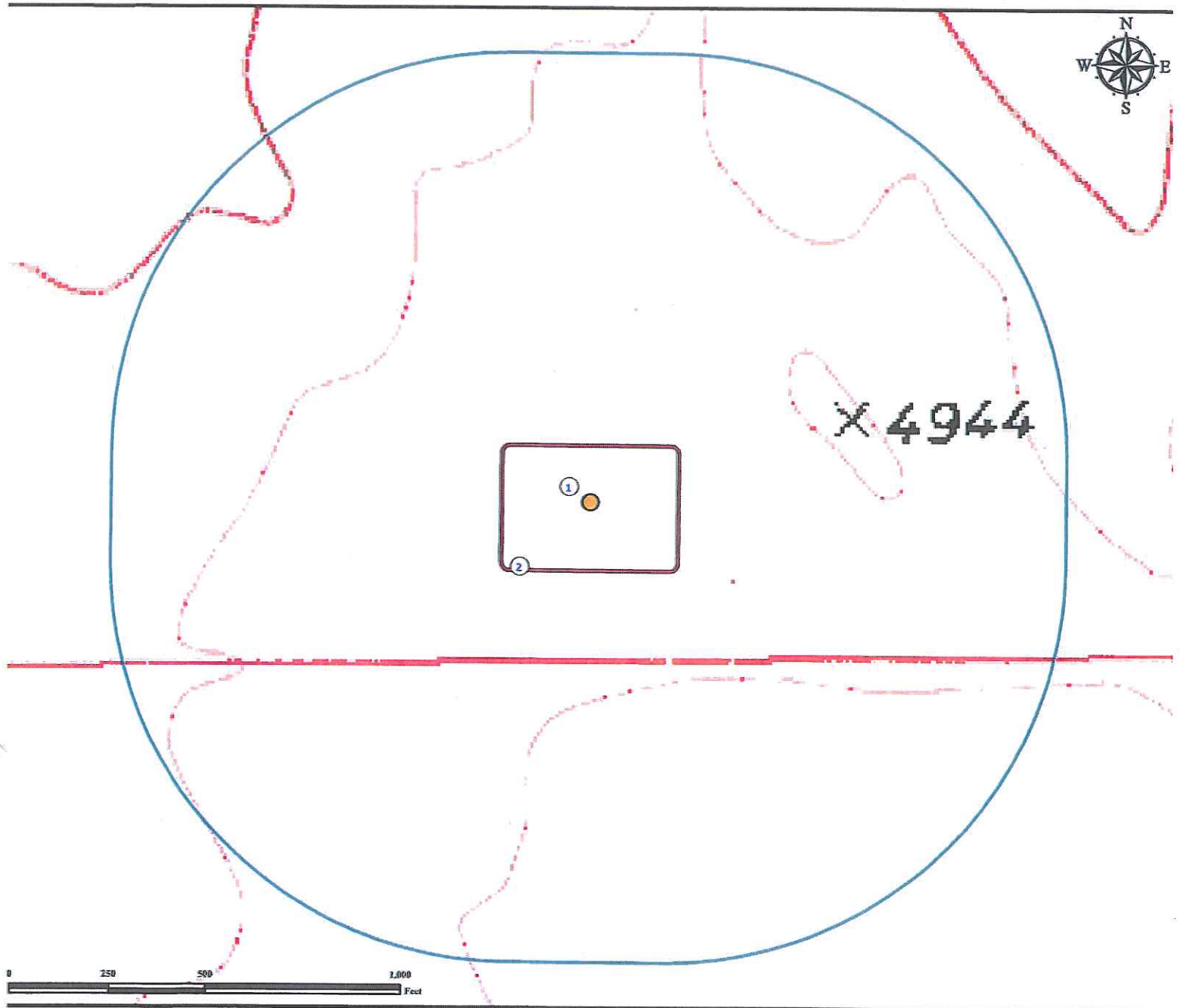


Hydrology Map

REINES 1-1H

SE¼ SW¼ SECTION 1, TOWNSHIP 7 NORTH, RANGE 60 WEST OF THE 6TH PRINCIPAL MERIDIAN



1. Proposed well REINES 1-1H.

2. Operational disturbance area.

There are no surface waters within a 1000' radius of the disturbance area of the proposed oil and gas location.

Legend

-  Proposed Well
-  Disturbance Area
-  1000' Radius

Reference Location

** All Measurements are Made from Reference Well REINES 1-1H **

Lat: 40.598256° Long: -104.042867° (NAD83)
Elevation: 4929 Feet



Use our resources to find yours!
www.petro-fs.com
(303) 928-7128

Field Date: 10/28/2011
Drafting Date: 11/17/2011
Drafter: DMM
Checked By: BHF

Data Sources:
TOPO courtesy USGS

Prepared for:

