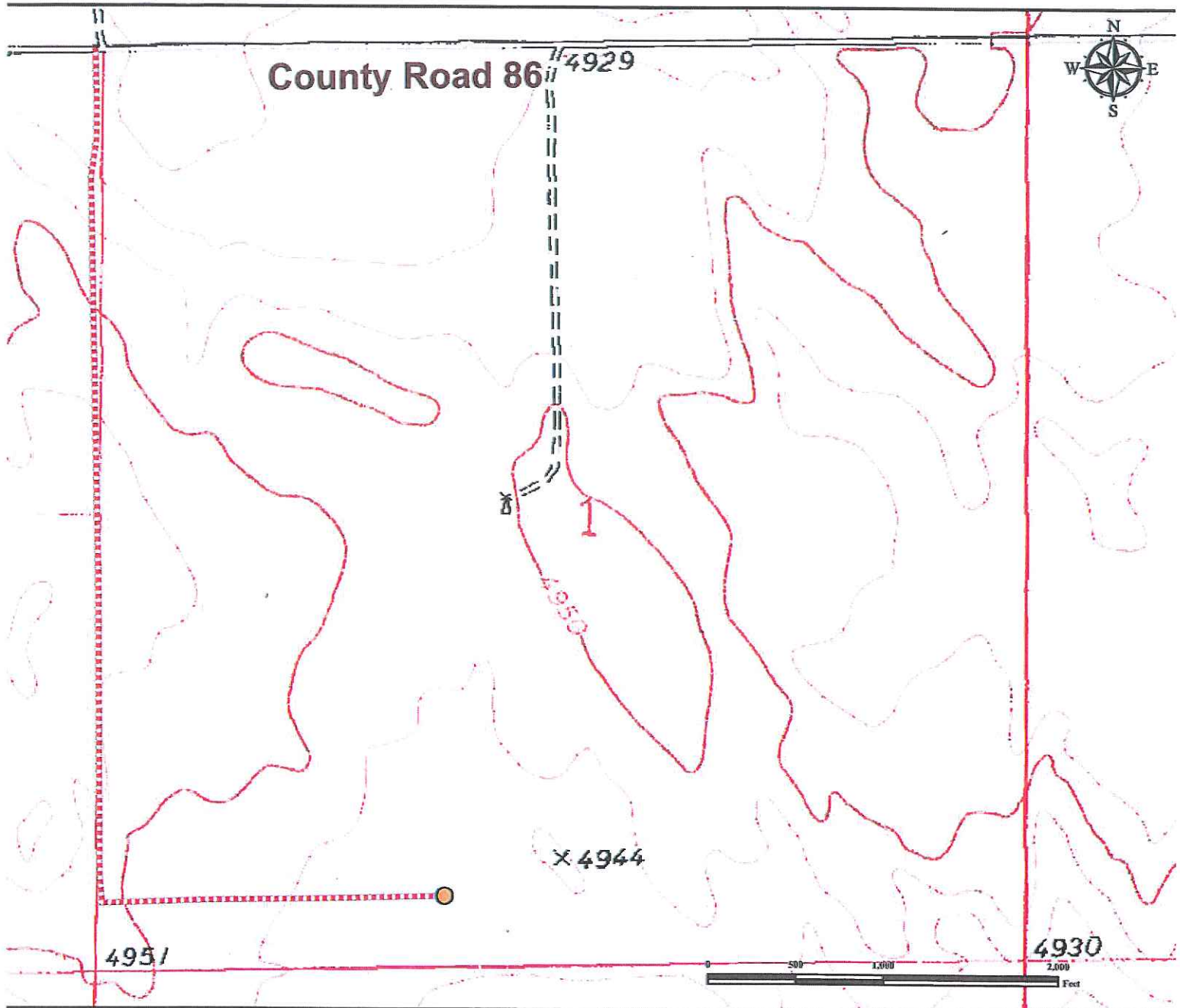


# Access Road Map

## REINES 1-1H

**SE¼ SW¼ SECTION 1, TOWNSHIP 7 NORTH, RANGE 60 WEST OF THE 6TH PRINCIPAL MERIDIAN**



**From Ault, CO:** From the intersection of US Highway 85 and Highway 14, proceed East on Highway 14  $\pm 36.6$  miles to county road 105.  
**Turn Right** and proceed south  $\pm 2.0$  miles to County road 86.

**Turn Left** on county road 86 and proceed East  $\pm 1.0$  miles to proposed access road

**Turn Right** onto proposed access road and drive south  $\pm 0.90$  miles.

**Turn Left** and drive east  $\pm 0.40$  miles.

Total distance from Ault, CO to proposed well location is  $\pm 40.9$  miles to proposed well location.

### Legend

● Proposed Well      - - - - - Proposed Access Road

### Reference Location

**\*\* All Measurements are Made from  
Reference Well REINES 1-1H \*\***

Lat: 40.598256° Long: -104.042867° (NAD83)  
Elevation: 4929 Feet



Use our resources to find yours!  
[www.petro-fs.com](http://www.petro-fs.com)  
 (303) 928-7128

Field Date: 10/28/2011  
 Drafting Date: 11/17/2011  
 Drafter: DMM  
 Checked By: BHF

Data Sources:  
 - TOPO courtesy of USGS

Prepared for:

