

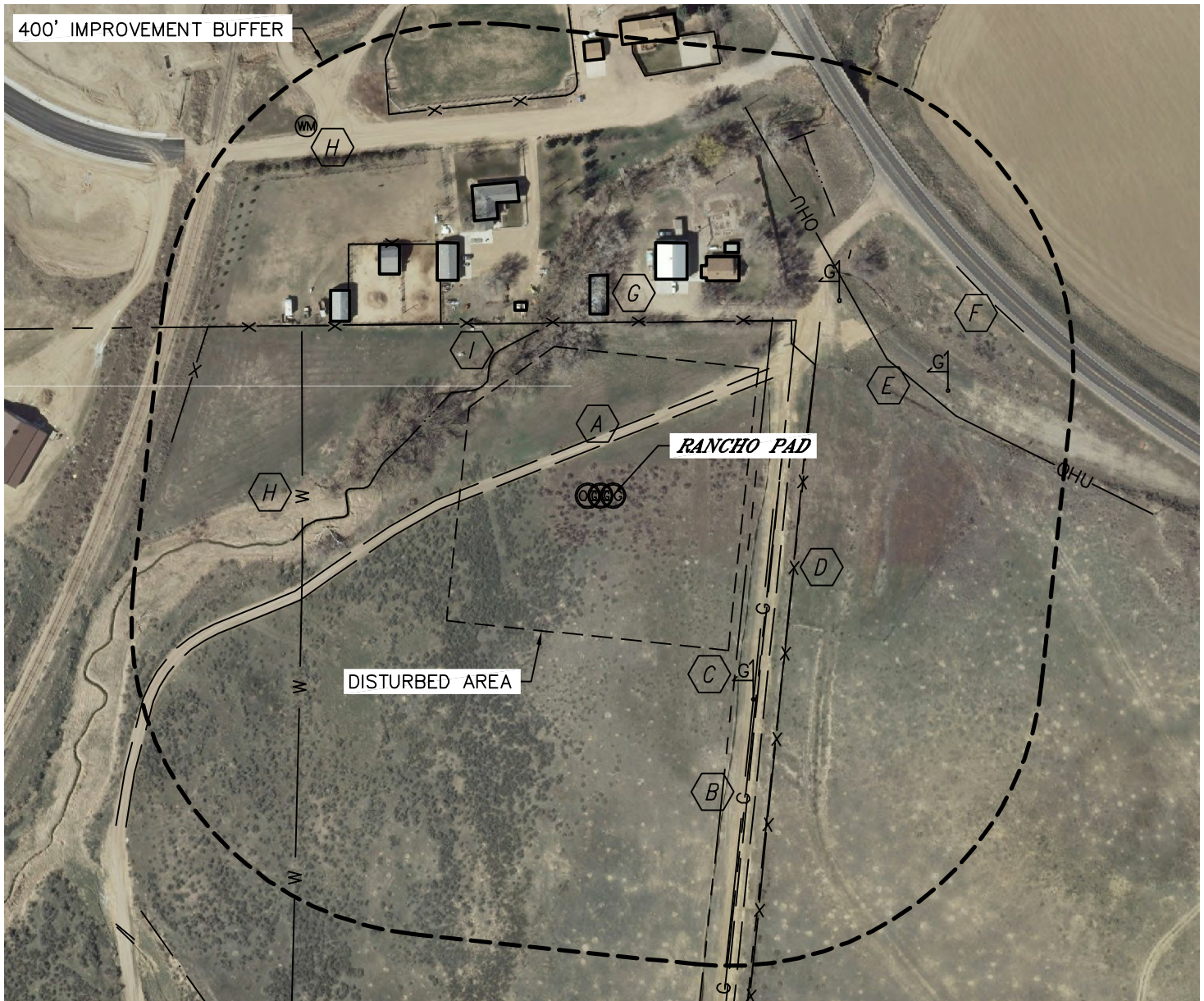


Lat40°, Inc. 1635 Foxtrail Drive, Suite 325 Loveland, CO 970-776-3321

LOCATION DRAWING

RANCHO WATER VALLEY 3-9-4, 2-8-4, 2-6-4

SECTION: 4
TOWNSHIP: 5N
RANGE: 67W



IMPROVEMENTS:

(MEASURED FROM THE PROPOSED RANCHO WATER VALLEY 3-9-4 LOCATION)

- | | |
|---|---|
| A FIELD ROAD 64' NW, 208' SE | F HIGHWAY 257 515' NE |
| B GAS LINE 204' SE | G BUILDING 231', 553' & 572' N, 260', 336', 381', 390' & 401' NW, 284', 297' & 340' NE |
| C GAS MARKER 314' SE, 379' & 446' NE | H WATER LINE 392' W
WATER METER 610' NW |
| D FENCE 220' N, 237' SE, 511' N | I DITCH 216' NW, 425', 453' NE |
| E OVERHEAD UTILITY 388' NE | |

NEAREST: BUILDING 231' N, PUBLIC ROAD 515' NE (HWY 257),
ABOVE GROUND UTILITY 388' NE, RAILROAD 600' NW, PROPERTY LINE 208' NE

