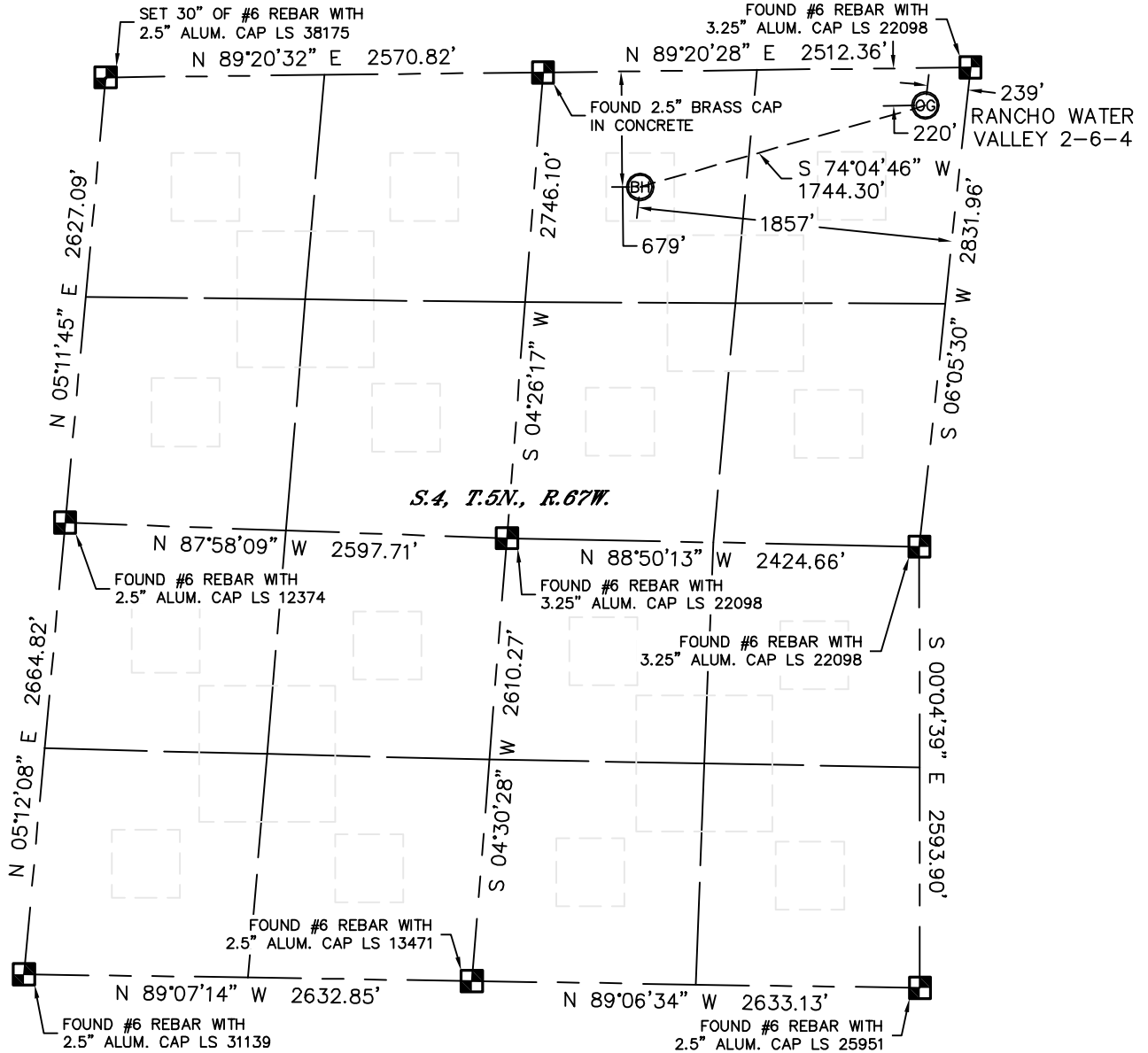




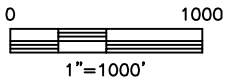
WELL LOCATION CERTIFICATE

SECTION: 4
TOWNSHIP: 5N
RANGE: 67W

THIS MAP DOES NOT REPRESENT A BOUNDARY SURVEY



S.4, T.5N., R.67W.



In accordance with a request from Michael Cuba with Tekton Energy, LLC Lat40°, Inc. has determined the surface location of the RANCHO WATER VALLEY 2-6-4 to be 220' from the NORTH line and 239' from the EAST line and the bottom hole to be 679' from the NORTH line and 1857' from the EAST line as measured at right angles from the section lines of Section 4, Township 5 North, Range 67 West of the Sixth Principal Meridian, County of Weld, State of Colorado.

I hereby state that this Well Location Certificate was prepared by me, or under my direct supervision, that the fieldwork was completed on 11/16/11, for and on behalf of Tekton Energy, LLC That this is not a Land Survey Plat or an Improvement Survey Plat, and that it is not to be relied upon for establishment of fence, building, or other future improvement lines.

NOTE:

- 1) Bearings shown are Grid Bearings of the Colorado State Plane Coordinate System, North Zone, North American Datum 1983/2007. The lineal dimensions as contained herein are based upon the "U.S. Survey Foot."
- 2) Ground elevations are based on an observed GPS elevation (NAVD 1988 DATUM).
- 3) IMPROVEMENTS: See LOCATION DRAWING for all visible improvements within 400' of disturbed area.
- 4) SURFACE USE: RANGELAND
- 5) INSTRUMENT OPERATOR: ADAM KELLY

SURFACE LOCATION

LATITUDE: 40.43548°N
 LONGITUDE: 104.88799°W
 PDOP: 2.9
 ELEV: 4774'
 1/4,1/4: NE1/4NE1/4 (GOV'T LOT 2)
 NEAREST PROPERTY LINE: 220' NORTH



BOTTOM HOLE

LATITUDE: 40.43420°N
 LONGITUDE: 104.89403°W

NOTE

According to Colorado law, you must commence any legal action based upon any defect in this W.L.C. within three years after you discover such defect. In no event, may any action based upon any defect in this survey be commenced more than ten years after the date of the certificate shown hereon. (13-80-105 C.R.S.)

LEGEND

-  = ALIQUOT MONUMENT AS DESCRIBED
-  = CALCULATED POSITION

Brian T. Brinkman—On behalf of Lat40°, Inc.
 Colorado Licensed Professional
 Land Surveyor No. 38175
 PROJECT# 2011315

